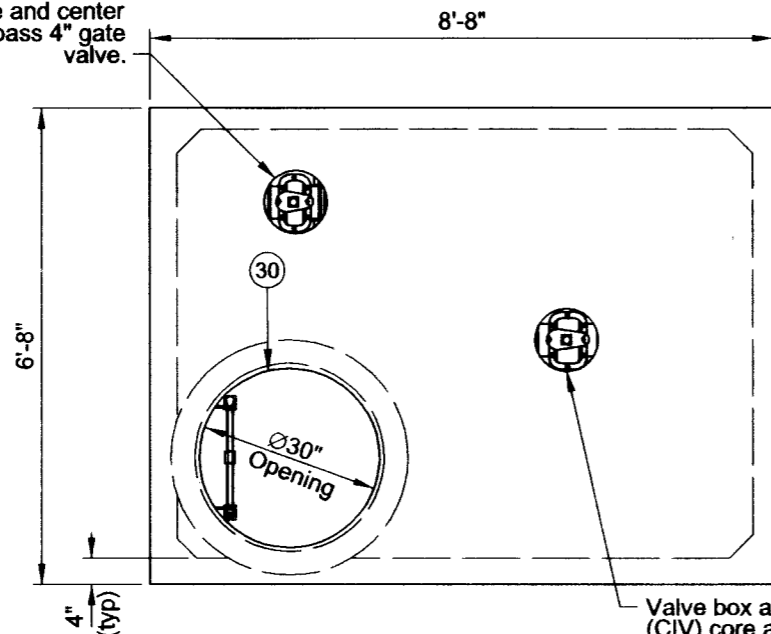
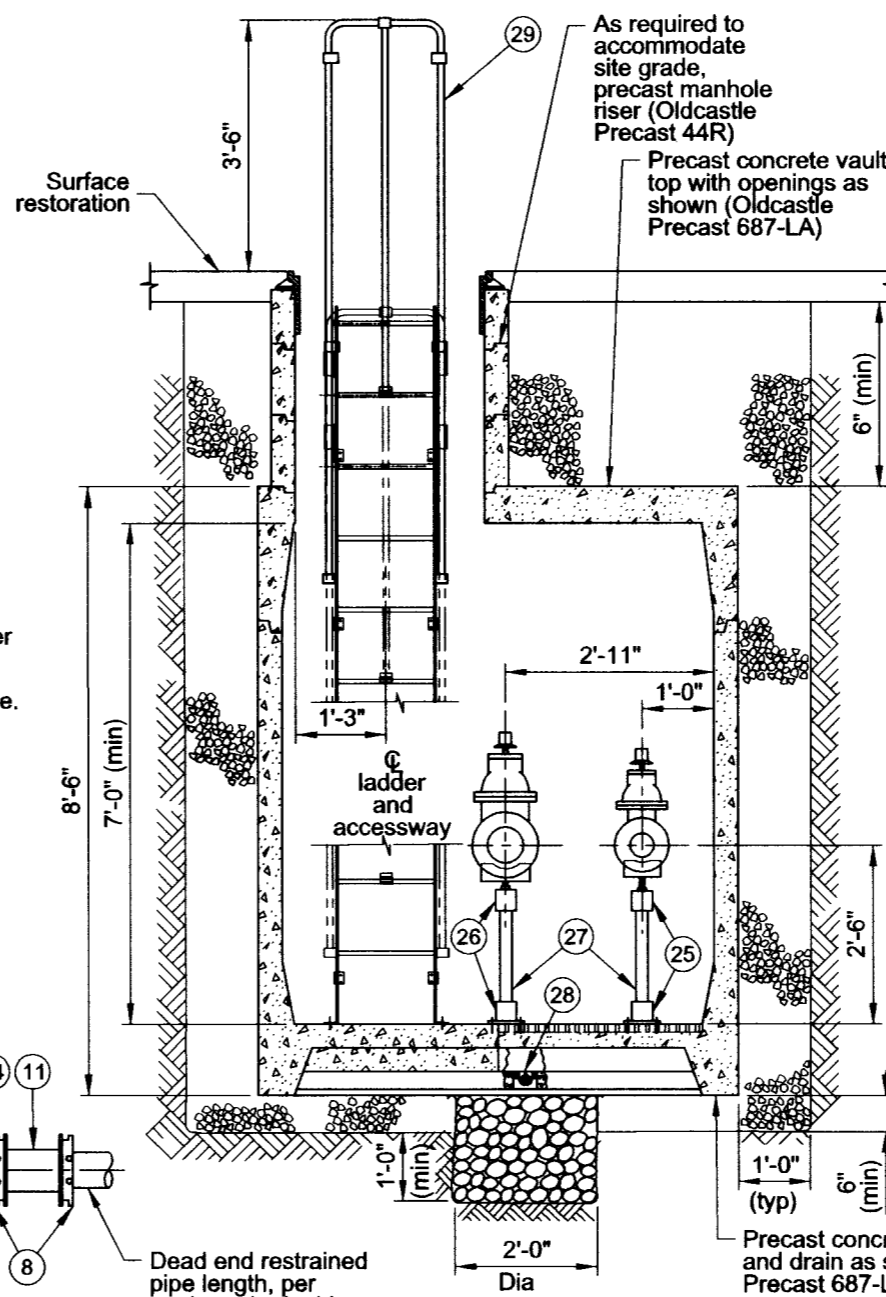


Valve box and cover (CIV) core and center over bypass 4" gate valve.

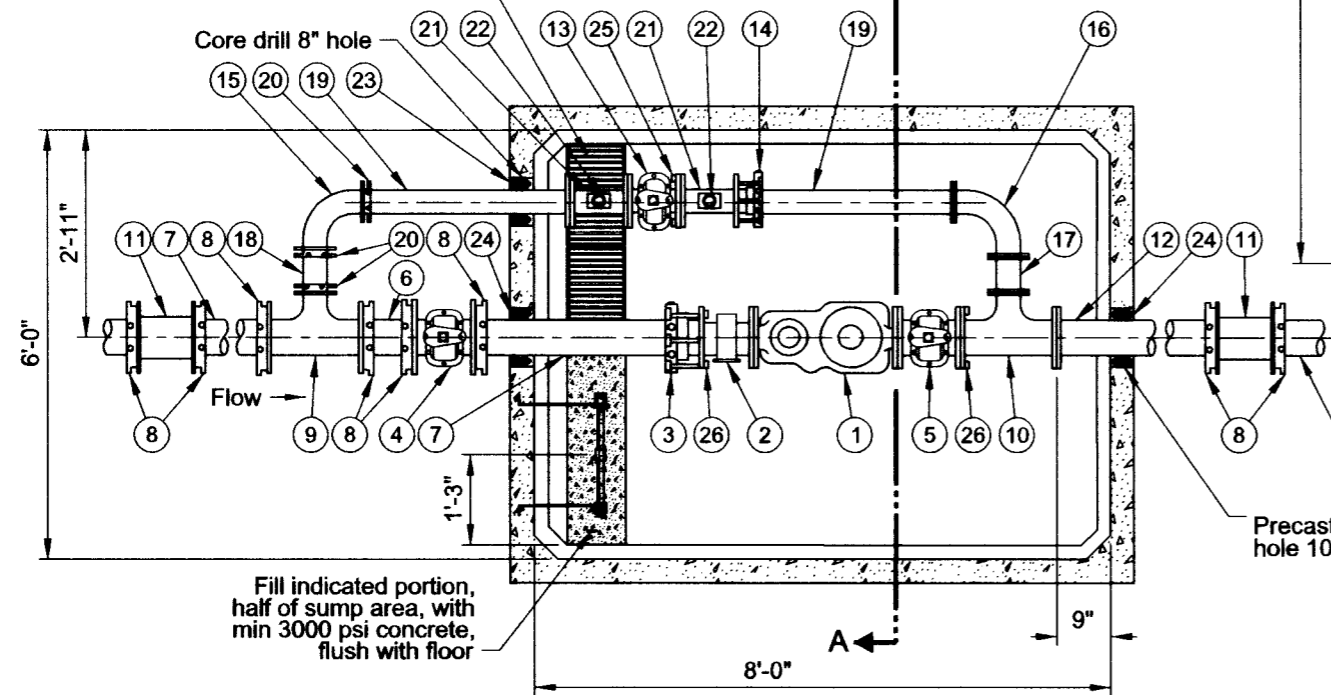


Vault Top Plan
3/8"=1'-0"



Section A-A
3/8"=1'-0"

Hot dipped galvanized grate in 2 equal sections



Vault Floor Plan
3/8"=1'-0"

List of Parts

Item No	Size	Qty	Description
1	6"	1	Meter, compound with test outlet
2	6"	1	Strainer, FLG x FLG
3	6"	1	Restrained dismantling assembly (MegaFlange)
4	6"	1	Gate valve, MJ x MJ OL
5	6"	1	Gate valve, FLG x FLG OL
6	6"	1	Nipple, DI PE X PE 8"-9" long (field fit)
7	6"	2	Nipple, DI PE X PE 36" long (field fit)
8	6"	8	Gland, wedge action retainer (Megalug)
9	6"x6"x4"	1	Tee, DI MJ x MJ
10	6"x6"x4"	1	Tee, DI FLG x FLG
11	6"	2	Solid sleeve, DI MJ
12	6"	1	Nipple, DI FLG X PE 48" long (field fit)
13	4"	1	Gate valve, FLG x FLG OL
14	4"	1	Restrained dismantling assembly (Megaflange)
15	4"	1	Bend, DI MJ long radius 90 degrees
16	4"	1	Bend, DI FLG long radius 90 degrees
17	4"	1	Spool, DI FLG x FLG 6" long
18	4"	1	Nipple, DI PE X PE 8"-9" long (field fit)
19	4"	2	Nipple, DI FLG X PE 36" long (field fit)
20	4"	3	Gland, wedge action retainer (Megalug)
21	4"x4"x2"	2	Drip tee, FLG x FLG x FIPT
22	2"	2	Gate Valve, brass with plug
23	4"	1	Seal, mechanical penetration (Link Seal LS-410-C-7)
24	6"	2	Seal, mechanical penetration (Link Seal LS-410-C-10)
25	4"	1	Adjustable pipe support, hot dipped galvanized
26	6"	2	Adjustable pipe support, hot dipped galvanized
27	2"	3	Pipe, galvanized steel (field fit)
28	4"	1	Drain check valve
29		1	Ladder, galv steel with aluminum extension (field fit) (Oldcastle Precast)
30	30"	1	Manhole frame and cover, 30" true opening

Notes:

1. See General Vault Detail (P-855) for construction and material notes.

The selection and use of this Standard Drawing, while designed in accordance with generally accepted engineering principles and practices, is the sole responsibility of the user.



PORTLAND WATER BUREAU
CITY OF PORTLAND, OREGON

[Signature]
Chief Engineer

Standard Drawing Title
**6" Compound Meter with
4" Bypass in 6-8-7 Vault
(In Street)**

Note:
All material and workmanship shall be in accordance with City of Portland Standard Construction Specifications.

Effective Date Aug 17 2015
Calc. Book No. PWB 1
Baseline Report Date Aug 17 2015

Standard Drawing No.
P-869c