

# Willamette River Crossing

## Site safety, security, and aesthetics



The Willamette River Crossing project will deliver water to the west side of the river, even after an earthquake. The improvements we're making will enhance our water system's resilience and reduce future risks, ensuring safe and abundant water for generations to come.

The team working on this two-year project is committed to site safety, security, and aesthetics. We will work hard to minimize these impacts to surrounding residents and businesses through the measures described below.

### Work zones

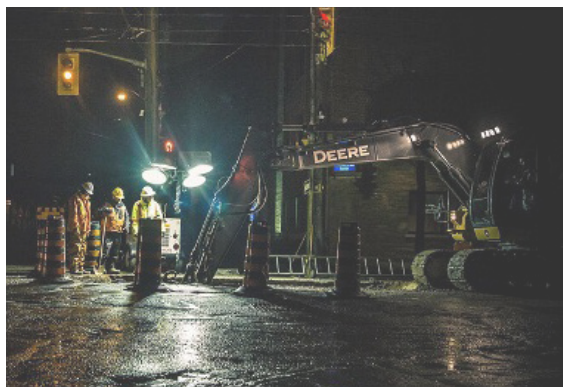
Construction will occur in different segments on both sides of the river. Each segment requires different construction methods and traffic planning. Not all segments will be under construction at the same time.



### Site safety and security

We are committed to maintaining work area security and safety, both for the crew and for the community members traveling in and near the site. Work sites and staging areas will be secured with fencing around the perimeter. Occasionally, some of our work must be done in round-the-clock shifts, so we will apply for a permit to work at night.

Steel street plates will be used to cover open trench excavation areas during nonworking hours. Security guards will be used as needed and cameras may be used in specific locations, including the Montgomery shaft. If after-hours security issues arise, contact information for security detail, local law enforcement, and City/contractor supervisors will be shared with area residents and businesses.



### Lighting

Pending City approval to work at night for limited periods of time, lighting will be necessary to ensure safety in the work sites. We will limit lighting to work zones and to areas where light is needed for crews to safely work and for the community to travel around the work site. When feasible, all lighting related to construction activities will be shielded or directed at the work area to restrict direct illumination onto properties located outside the project site. Motion-activated lighting may also be used at the entrance of onsite office trailers to allow for safe entrance and exit.

## Fencing

Chain link or mesh fencing may be used to maintain safety and security. A sound barrier may be used at South Waterfront Park to dampen noise and block views of the construction site. We'll share more information about the sound barrier closer to construction.

Standard safety fencing may be enhanced in the South Waterfront Park work zone to allow for a mural or other artwork to be installed on it to create an aesthetically pleasing barrier.



## Site cleanliness and aesthetics

We pride ourselves on clean, secure work sites. Secure sanitation facilities for employee use will be rented and supplied at fixed base work sites, including:

- Parking lot between S Harbor Drive and S Montgomery Street
- Intersection of Harbor Drive and S Montgomery Street
- South Waterfront Park shaft
- Parking and staging areas

The team will rent additional sanitation facilities for short-term work, such as open-cut pipe installations. All units will be cleaned and emptied as needed by a sanitation company to maintain sanitary facilities.

We will use bins and dumpsters to separate waste. In addition, crews will set up containment areas for new oil, fuel, and used oil.

## What to expect during construction:

- Typical weekday work hours are 7 a.m.–5 p.m., Monday through Friday. Minimal night and weekend work will be required.
- Lane restrictions will occur during active work periods. Local access will be maintained when feasible.
- Pedestrian access will be maintained using detours when sidewalks and walkways are temporarily closed.
- Safety barriers will include signage and fencing.
- Parking will be restricted.
- The contractor will work with businesses and vendors to ensure delivery access.
- Bus stops may be temporarily relocated.
- Emergency access will be maintained at all times.

*\*Start date, duration, and work hours are subject to change due to permitting, weather, and other factors.*

## Being a good neighbor

Keeping community members informed is a priority for us during this work. We will continue to communicate with residents, businesses, and interested groups to help minimize construction impacts. Some of the ways we will share the information you need to plan ahead include:

- Community meetings and briefings
- Regular email and text message updates
- Flyers at your door
- Signage around your community
- Social media updates
- A construction information hotline
- Prompt, individualized responses to inquiries

## For more information

- Visit the website: [Portland.gov/water/wrx](http://Portland.gov/water/wrx)
- Email us: [wrx@portlandoregon.gov](mailto:wrx@portlandoregon.gov)
- Call us: 503-823-7499

The City of Portland is committed to providing meaningful access. To request translation, interpretation, modifications, accommodations, or other auxiliary aids or services, contact 503-823-7499 or 311 (503-823-4000), for Relay Service & TTY: 711.

Traducción e Interpretación | Biên Dịch và Thông Dịch | 口笔译服务 | अनुवादन तथा व्याख्या | Устный и письменный перевод | Turjumaad iyo Fasiraad | Письмовий і усний переклад | Traducere și interpretariat | Chiaku me Awewen Kapas | Translation and Interpretation: 503-823-7770 | [portland.gov/water/access](http://portland.gov/water/access)