

WHAT YOU GET IN YOUR KIT

The lead sampling kit includes:

- "HOW TO" brochure
- Large sports bottle
- Small sample bottle
- Information card about the sample
- 4" x 6" clear bubble-lined bag
- 6" x 9" postage-paid return envelope



If any item is missing, please call the Portland Water Bureau Water Line at 503-823-7525. Ask for another lead sampling kit.

RETURN YOUR SAMPLE TO THE PORTLAND WATER BUREAU

BY MAIL:

Put the sealed 6" x 9" postage-paid return envelope in the mail. Please return the sample within 7 days of collecting the sample.

You should receive the analysis results within 6 weeks. Call the Portland Water Bureau at 503-823-7525 if you have not received your results after 6 weeks.

EASY STEPS TO AVOID POSSIBLE EXPOSURE TO LEAD FROM PLUMBING

No matter what the results of your lead test, you can reduce your exposure to lead in tap water by following these seven simple steps.

- 1. Run your water to flush the lead out.** If the water has not been used for several hours, run each tap for 30 seconds to 2 minutes or until it becomes colder before drinking or cooking. This flushes water which may contain lead from the pipes.
- 2. Use cold, fresh water for cooking and preparing baby formula.** Do not cook with or drink water from the hot water tap; lead dissolves more easily into hot water. Do not use water from the hot water tap to make baby formula.
- 3. Do not boil water to remove lead.** Boiling water will not reduce lead.
- 4. Consider using a filter.** Check whether it reduces lead – not all filters do. Be sure to maintain and replace a filter device in accordance with the manufacturer's instructions to protect water quality. Contact NSF International at 800-NSF-8010 or www.nsf.org for information on performance standards for water filters.
- 5. Test your child for lead.** Ask your physician or call the LeadLine to find out how to have your child tested for lead. A blood lead level test is the only way to know if your child is being exposed to lead.
- 6. Regularly clean your faucet aerator.** Particles containing lead from solder or household plumbing can become trapped in your faucet aerator. Regular cleaning every few months will remove these particles and reduce your exposure to lead.
- 7. Consider buying low-lead fixtures.** As of January 1, 2014 all pipes, fittings and fixtures are required to contain less than 0.25% lead. When buying new fixtures, consumers should seek out those with the lowest lead content.

Please call the **LeadLine** at **503-988-4000**, www.leadline.org, if you have questions about other lead hazards in the home.



Portland Water Bureau
1120 SW Fifth Avenue, Room 600
Portland, OR 97204
www.portlandoregon.gov/water



Nick Fish, Commissioner
Michael Stuhr, P.E., Director

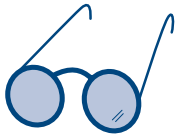
The City of Portland will make reasonable accommodation for people with disabilities. Please notify us no less than five (5) business days prior to the event by phone at 503-823-7404, by the city's TTY at 503-823-6868, or by the Oregon Relay Service at 1-800-735-2900.

HOW TO

PLAN FOR, COLLECT, AND RETURN YOUR WATER SAMPLE FOR LEAD TESTING

PLAN AHEAD TO COLLECT YOUR WATER SAMPLE

For the best results, plan ahead for collecting your water sample. Collect your sample from a kitchen faucet. If there is a filter on your kitchen faucet, collect the sample from a bathroom faucet.



1. Read the instructions. Plan a time when you will let water sit in your plumbing system for 6-18 hours before collecting your sample.



2. To start the test, stop using your water. Do not run water indoors or outdoors for 6-18 hours after your last water use (such as overnight or in the day while at work).



3. On the "Lead in Water Sampling Information" card, record the time and date you stopped using your water.



4. After the water has sat undisturbed in your plumbing for 6-18 hours, it is time to collect the sample. Remove the lids from the large sports bottle and small sample bottle.



5. Before running any water, put the large sports bottle under the cold water faucet that you want to test. Turn on the cold water faucet as you would to fill a glass of water and fill the bottle to the bottle neck. Turn off the water.



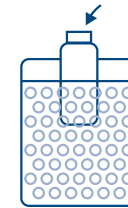
6. Put the lid back on the large sports bottle and screw it on tightly. Shake this bottle or turn it over several times to mix the sample thoroughly.



7. Remove the lid from the large sports bottle. Pour water from the large sports bottle into the small sample bottle. Fill to the neck of the small sample bottle. Put the lid back on the small sample bottle. Screw the lid on tightly.



8. Discard the water in the large sports bottle or use this water for non-cooking or non-drinking purposes. Return only the water in the small sample bottle to the Portland Water Bureau. The large sports bottle is yours. Please do not return it to the Portland Water Bureau.



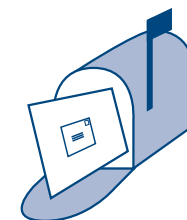
9. Place the small sample bottle inside the 4" x 6" clear bubble-lined resealable bag. Seal the bag.



10. Complete filling out the required information on the "Lead in Water Sampling Information" card. **Don't forget to complete the time and date of collection and to note if collected from kitchen or bathroom faucet.**



11. Place the sealed bubble-lined bag and the completed information card inside the 6" x 9" postage-paid return envelope. Seal this envelope with the self-adhesive strip.



12. Return the sample to the Portland Water Bureau within 7 days of collecting it.