



Bull Run
TREATMENT
PROJECTS

*Our water: Safe and abundant
for generations to come*

PORTLAND WATER BUREAU

Bull Run Filtration Project

Informational Meeting

January 12, 2023

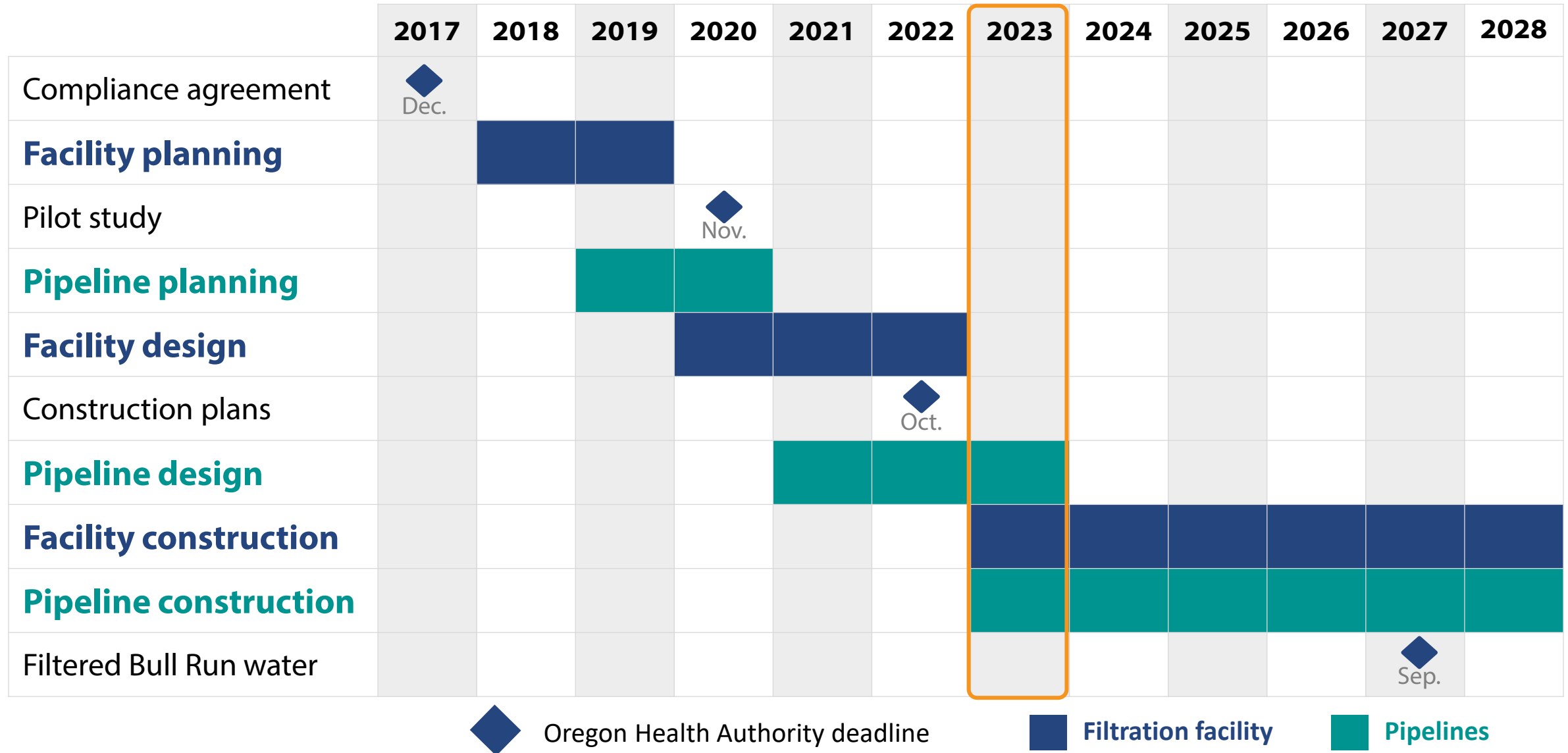


Agenda

1. Project Milestones (5 mins)
2. Traffic Considerations and Proposed Roadway Improvements (15 mins)
3. Communications (10 mins)
4. Questions & Comments (25 mins)
5. Future Meetings (5 mins)



Bull Run Filtration schedule



Bull Run Filtration project update



- Submitted land use application to Multnomah County in September in 2022, working on next step
- Submitted construction plans to the Oregon Health Authority in October 2022
- Preparing 100 percent design for water filtration facility and 90 percent design for pipelines
- Planning to submit land use application to Clackamas County in January

Multnomah County land use permitting process

Key upcoming steps include:

- County 150-day application review
- Public hearing
- County hearings officer decision

The County's process includes opportunity for public comment throughout.



Planning for facility construction



- Developing overall schedule and sequencing of work:
 - **Sept. 2023** filtration facility construction start
 - **Spring 2024** pipeline construction start
- Identifying construction safety measures and other best practices to limit disruption
- Ongoing communication and outreach to facility site neighbors and local businesses

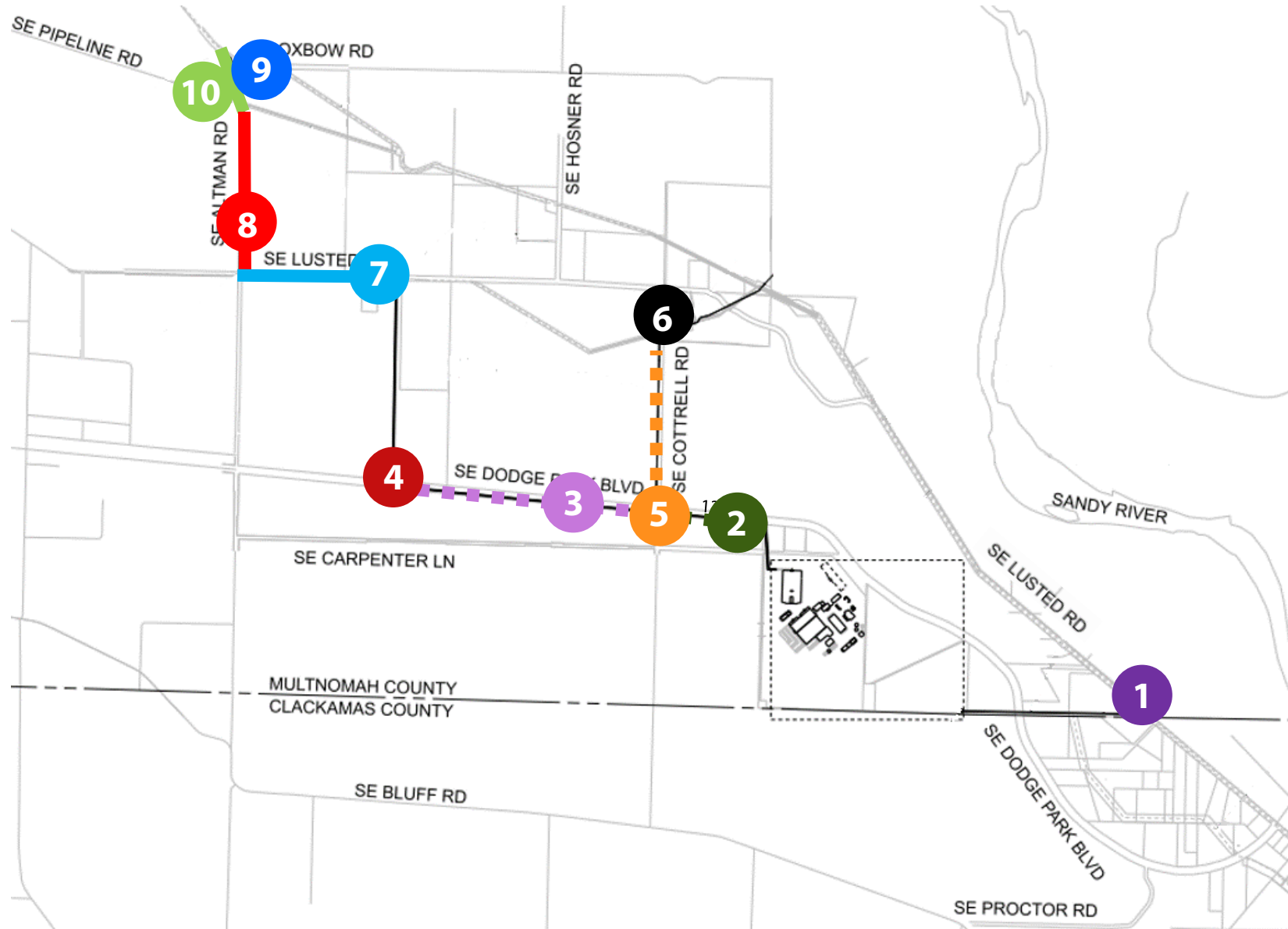


Construction Traffic Considerations

- Types of facility construction at the site will change over time
- Pipeline construction will happen in segments



Maintaining flow of traffic during proposed pipeline construction

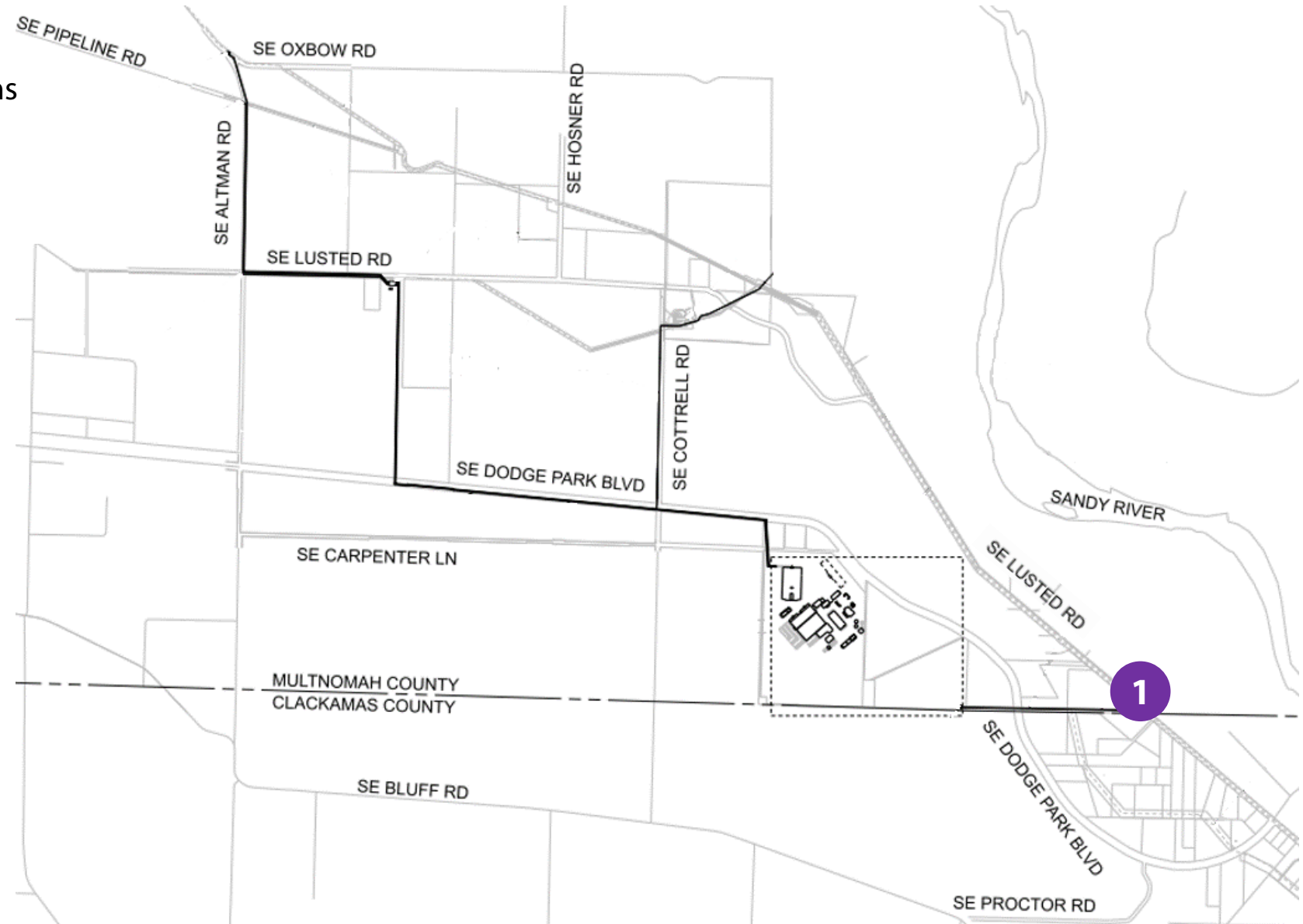


- ✓ Incorporates input from schools
- ✓ Incorporates input from farm operators
- ✓ Allows for continuous delivery of Bull Run water

Maintaining flow of traffic during proposed pipeline construction

Anticipated locations and durations
(yet to be finalized):

1. Lusted closure at county line
(intermittent road closures)



Maintaining flow of traffic during proposed pipeline construction

Anticipated locations and durations
(yet to be finalized):

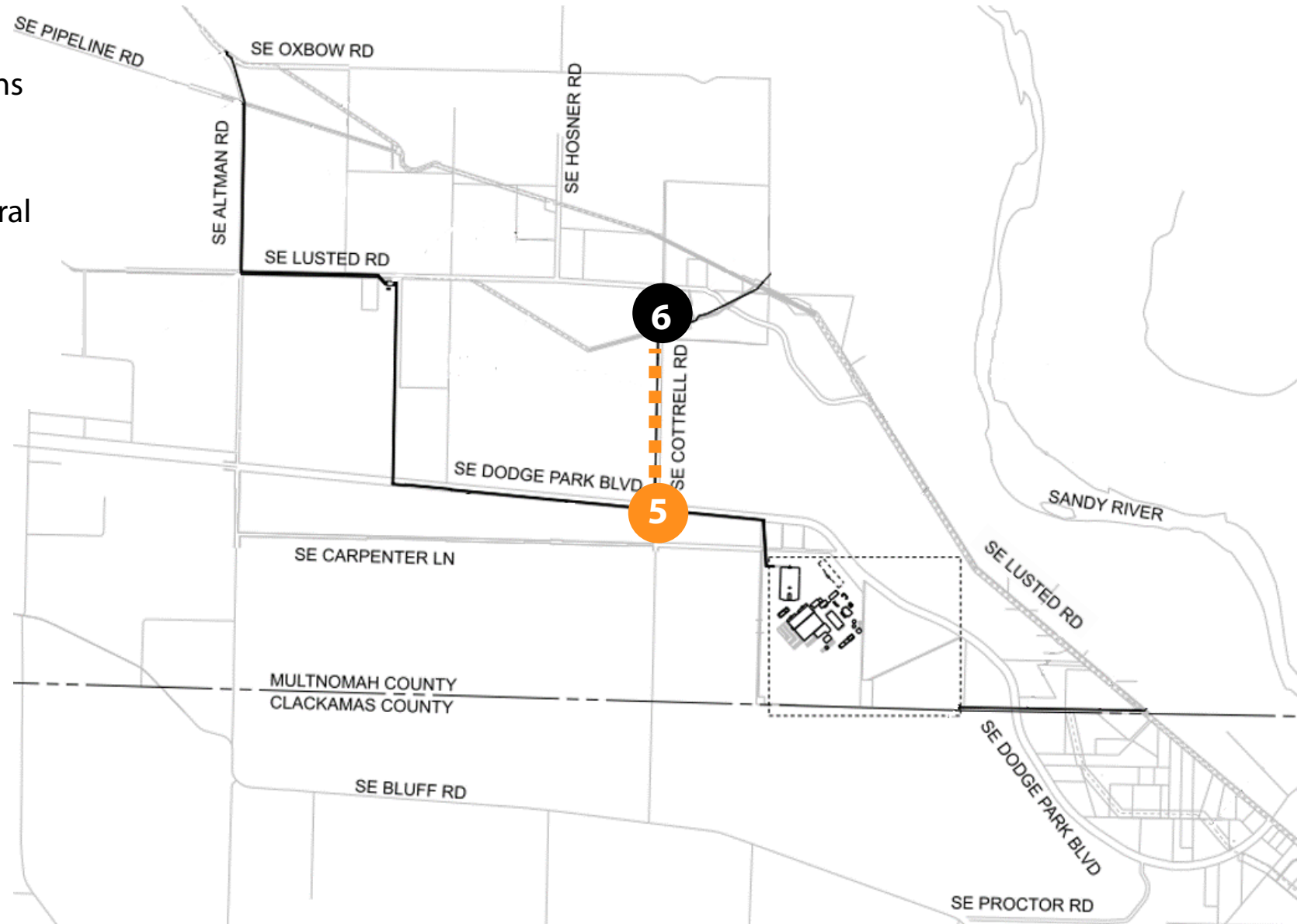
2. Single-lane traffic in Dodge Park
(late summer to early fall,
multiple years)
3. Single-lane traffic in Dodge Park
(multiple years)
4. Dodge Park closure for pipeline
crossing (1-2 months)



Maintaining flow of traffic during proposed pipeline construction

Anticipated locations and durations
(yet to be finalized):

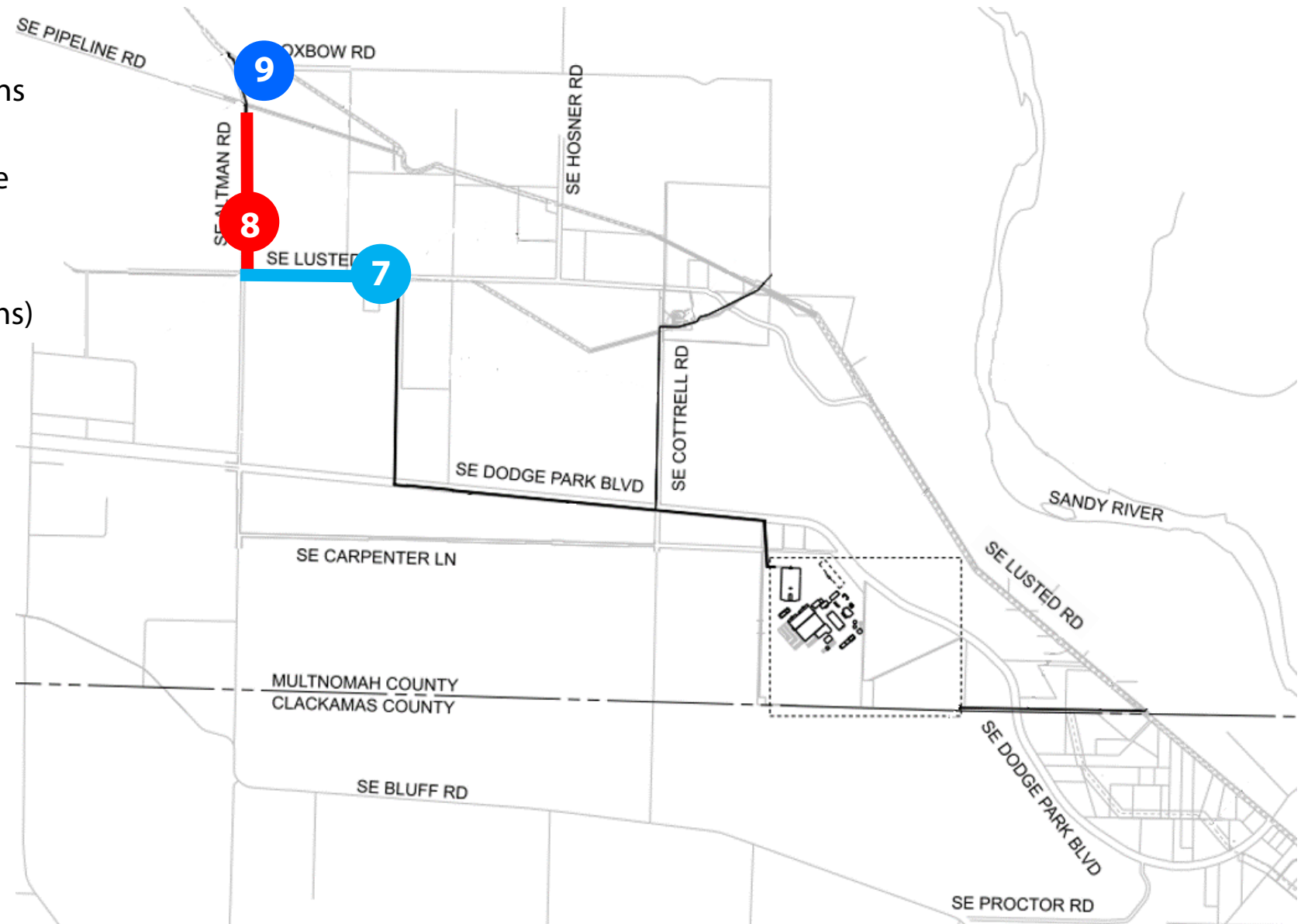
5. Cottrell closure (south side of Dodge Park Intersection, several months)
6. Single lane traffic in Cottrell (several months) and closure (several weeks)



Maintaining flow of traffic during proposed pipeline construction

Anticipated locations and durations
(yet to be finalized):

- 7. Lusted closure (twice, multiple months each)
- 8. Altman closure (9 months)
- 9. Altman closure (several months)



Maintaining flow of traffic during proposed pipeline construction

Anticipated locations and durations (yet to be finalized):

10. Pipeline Road near Altman closure (2-3 months)



Maintaining flow of traffic during proposed pipeline construction

Anticipated locations and durations
(yet to be finalized):

1. Lusted closure at county line (intermittent road closures)
2. Single-lane traffic in Dodge Park (late summer to early fall, multiple years)
3. Single-lane traffic in Dodge Park (multiple years)
4. Dodge Park closure for pipeline crossing (1-2 months)
5. Cottrell closure (south side of Dodge Park Intersection, several months)
6. Single lane traffic in Cottrell (several months) and closure (several weeks)
7. Lusted closure (twice, multiple months each)
8. Altman closure (9 months)
9. Altman closure (several months)
10. Pipeline Road near Altman closure (2-3 months)

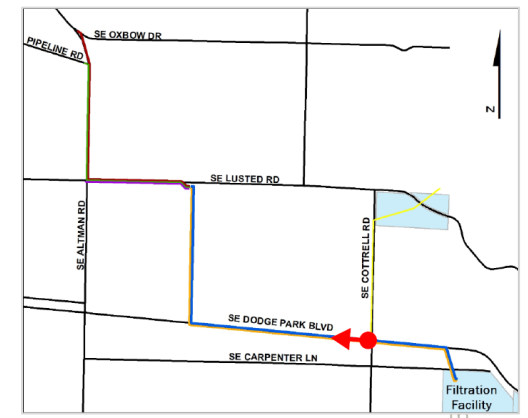


Prioritizing safety and keeping traffic moving

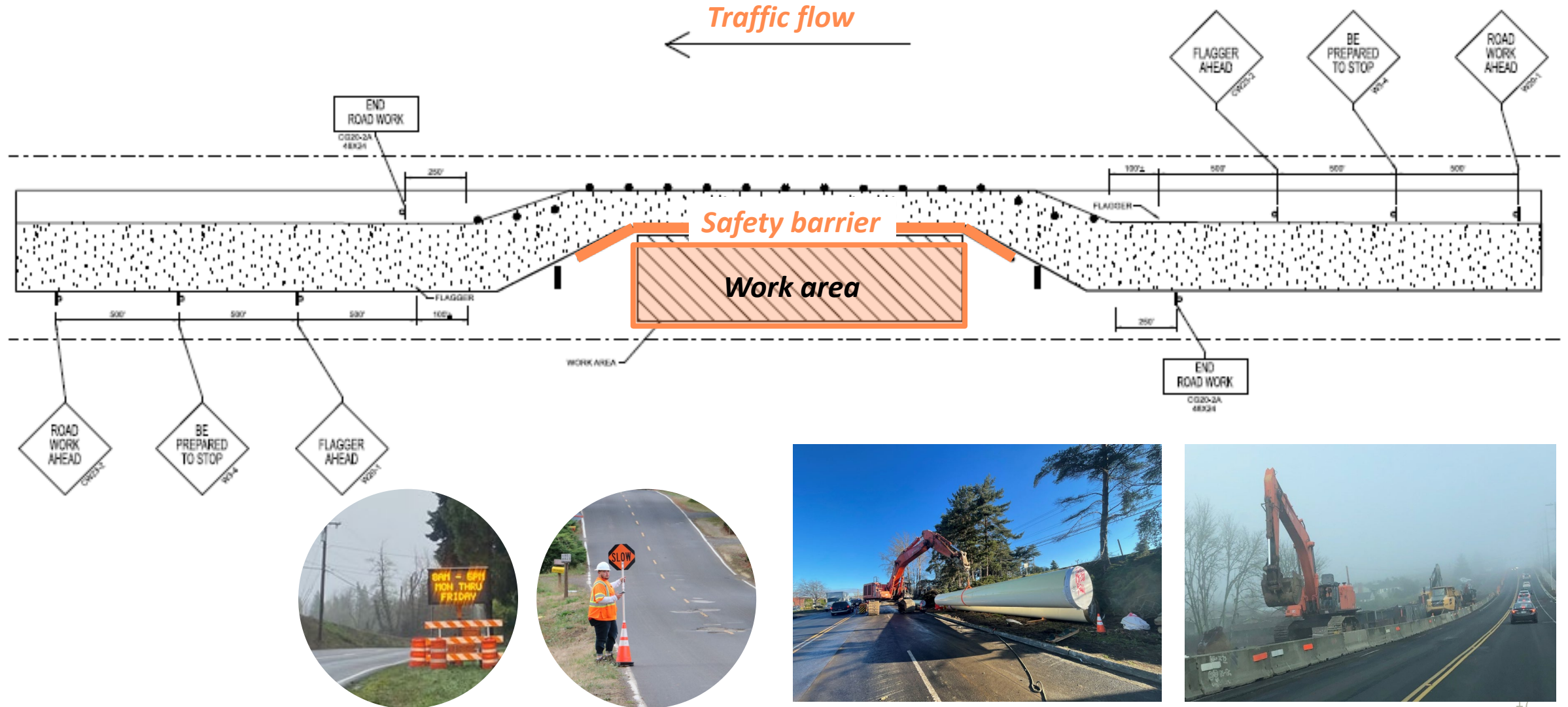
Conceptual Pipeline Design Construction Work Zone SE Dodge Park Boulevard



- ✓ Safety measures
- ✓ Keeping traffic moving
- ✓ Emergency vehicle access
- ✓ Continuous communication



Typical traffic control measures



Safe and well-managed work areas

- Providing traffic flaggers
- Temporary offsite signage for traffic routes and notifications
- Street sweeping
- Onsite dust control
- Posting safety signs
- Safely operating equipment
- Daily clean up



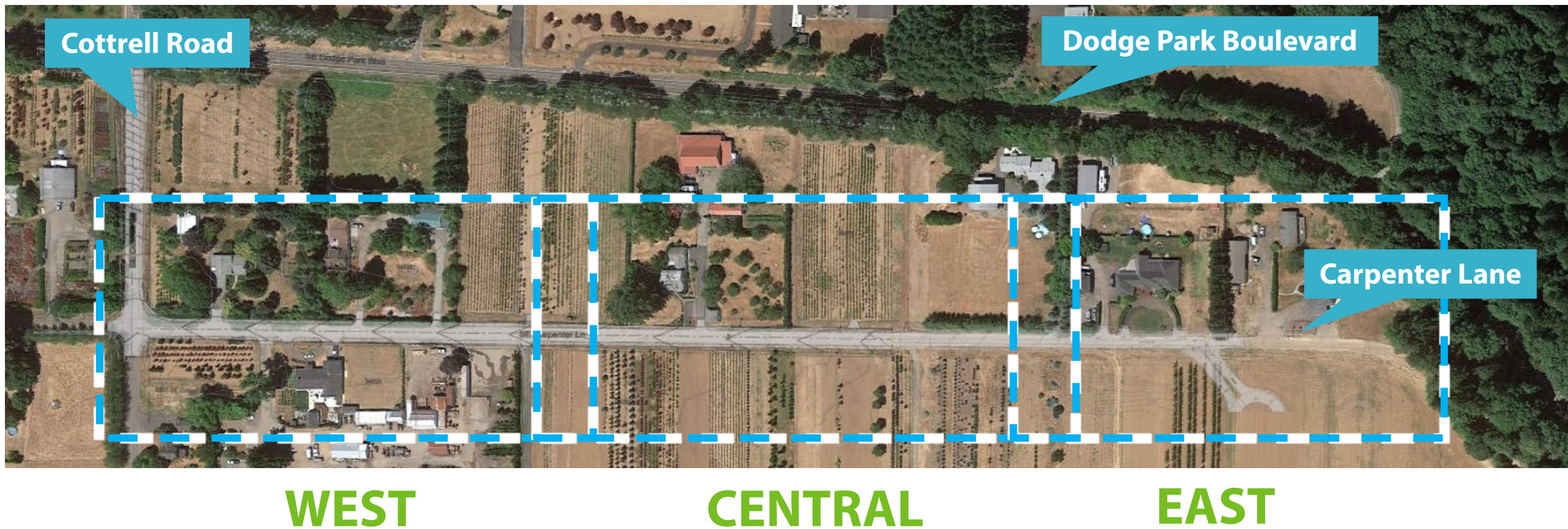


Proposed Roadway Improvements

Proposed Carpenter Lane improvements based on County requirements for local rural roadway

- Widening to 24-feet within existing County public right-of-way
- Planning to maintain current center line
- Asphalt surface
- Includes up to 6-foot gravel shoulders (no curbs for this road classification)

Roadway improvements are expected to be within the public right-of-way



Conceptual design of Carpenter improvements: west segment



Not to scale

Conceptual design of Carpenter improvements: central segment



Not to scale

Conceptual design of Carpenter improvements: east segment



Not to scale

Continuing to share information and coordinate with individual property owners

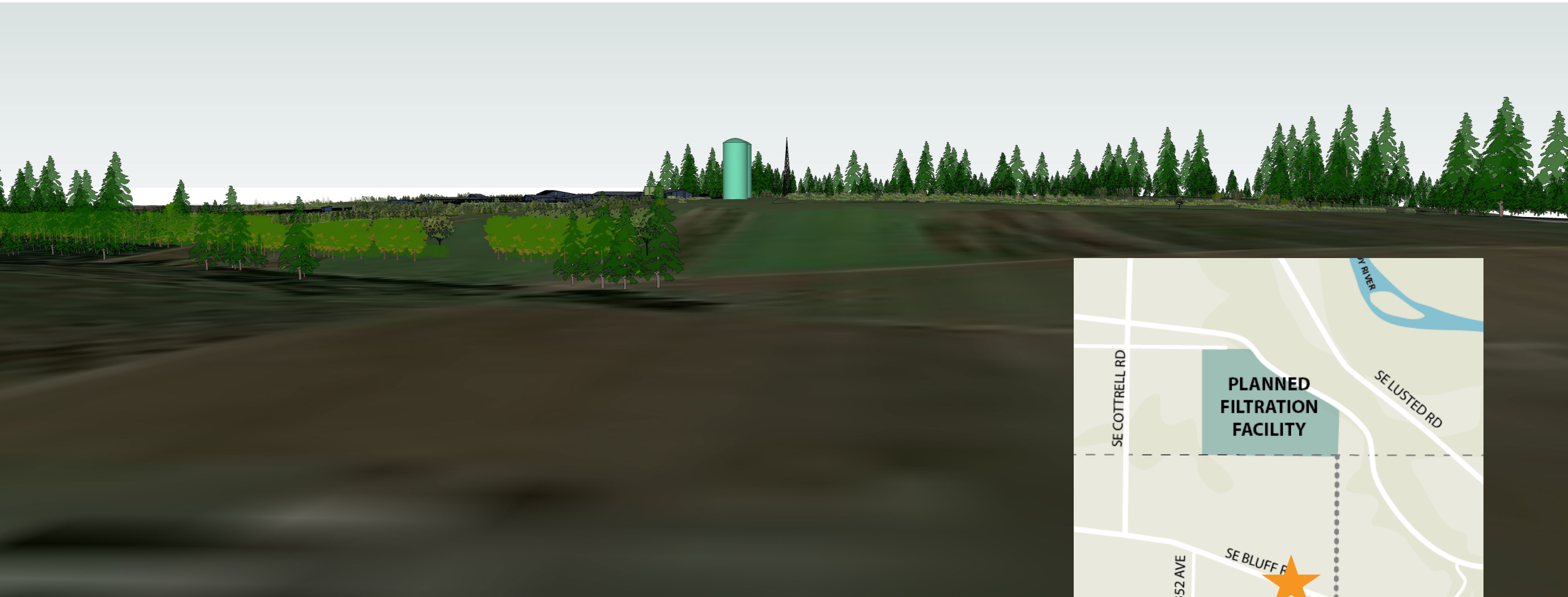
Conceptual Public Right-of-Way and Proposed Improvements SE Carpenter Lane at SE Cottrell Road intersection



Looking toward facility from Carpenter Lane



View of the facility seen from Bluff Road



Looking forward



DESIGN

- Coordinating with Multnomah County on road, intersection, and driveway standards
- Designing roadway improvements to meet county requirements within existing rights-of-way
- Continuing design of proposed south access



CONSTRUCTION

- Working with contractor on traffic controls, including provisions for local and emergency access during construction



COMMUNICATIONS

- Ongoing communication with property owners

Construction phase outreach tools

Ongoing

- Project e-news (monthly updates + notifications as needed)
- Construction webpage updates
- Mailings (letters, postcards)
- Individual property owner meetings, phone calls, doorhangers
- Project area signage
- Onsite Water Bureau liaison during work activities
- Project communications contact (phone, comment form, bullrunprojects@portlandoregon.gov)
- Neighbor information meetings

New

- Monthly coffee with the contractor
- Construction hotline
- Subscribe for text notifications

*What tools are most helpful?
Other suggestions?*





Future project update meetings



- Apr. 13, 2023 6-7pm
- July 13, 2023 6-7pm
- Oct. 12, 2023 6-7pm

Stay up to date:

Project e-news:

portland.gov/bullrunprojects

Construction updates:

portland.gov/filtration_activity

Questions?

bullrunprojects@portlandoregon.gov



Bull Run
TREATMENT
PROJECTS

*Our water: Safe and abundant
for generations to come*

Thank you!

Learn More portland.gov/bullrunprojects