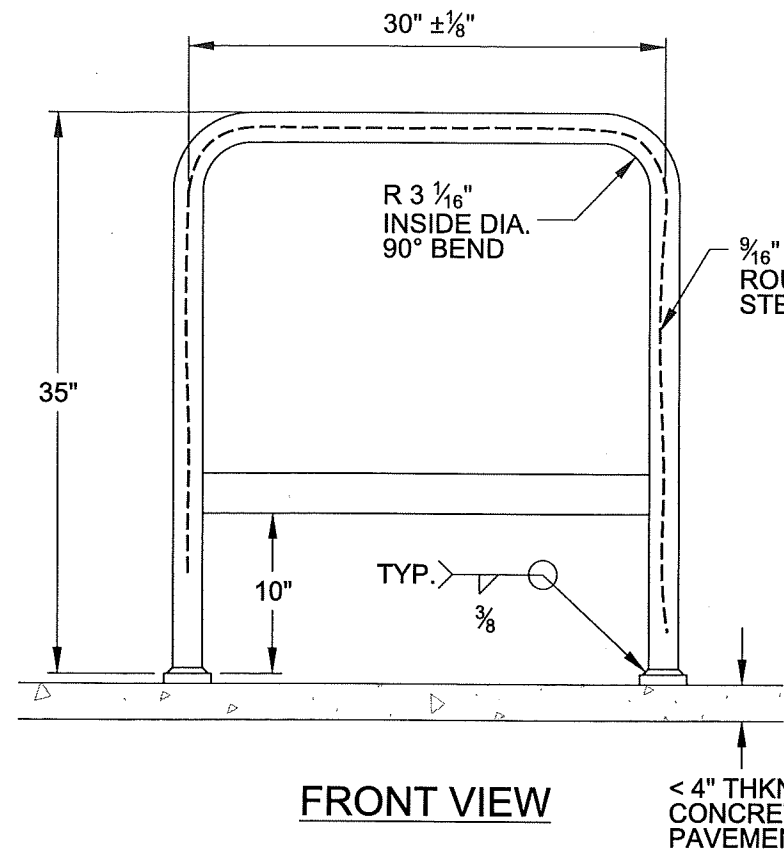
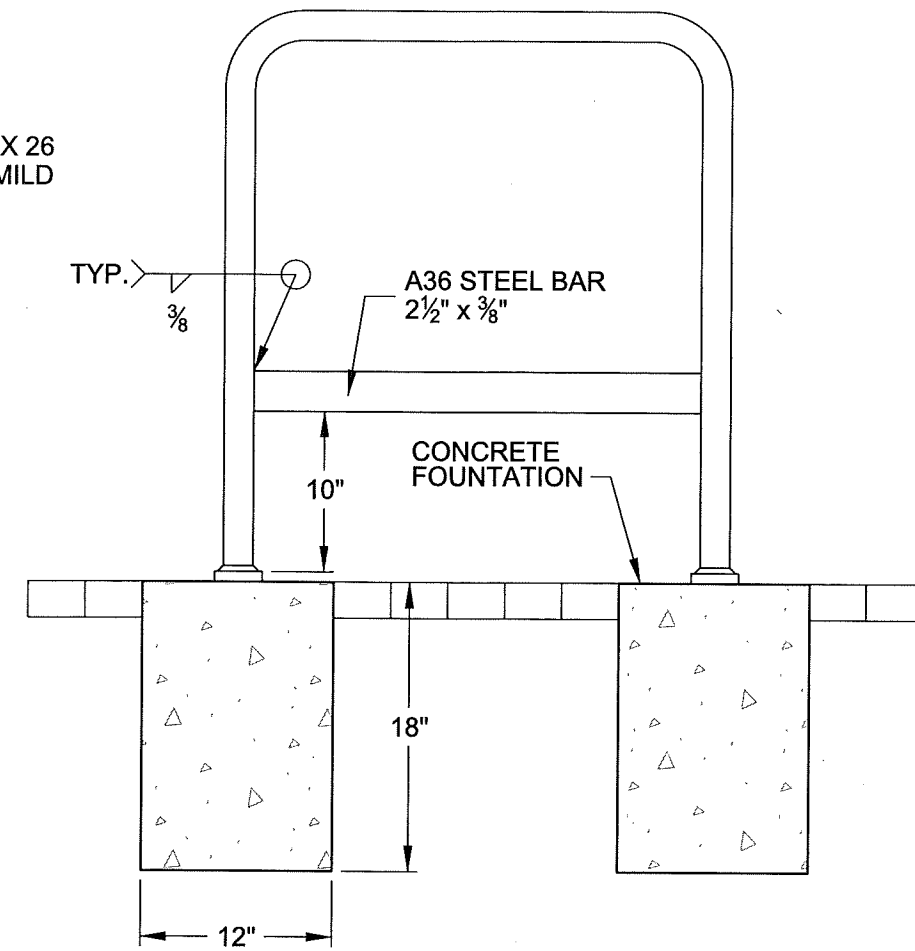


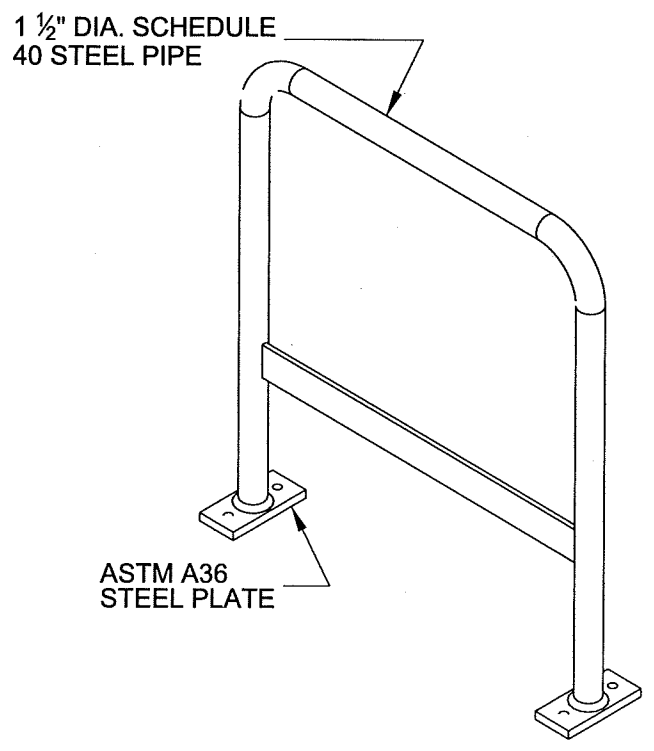
Plot Date: 5/11/2016 12:20:26 PM Filename: U:\ustruction\DON\CITY OF PORTLAND - STANDARD DRAWINGS\SECTION DIVISIONS\3-STREETS\MICROSTATION\STD DRAWING NO P-576\PILOT_SHT_P576 Bike Rack.dgn



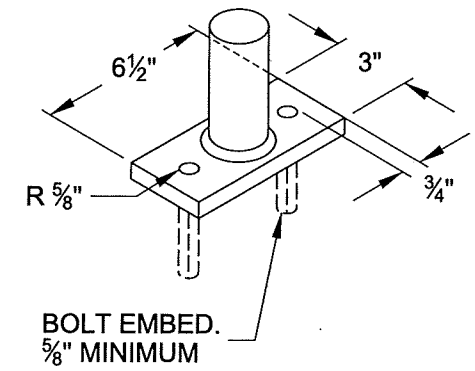
FRONT VIEW



FRONT VIEW FOOTING DETAIL WHEN INSTALLED IN PAVERS



ISOMETRIC VIEW



FLANGE DETAIL

FIRST ARTICLE INSPECTION REQUIRED

PRODUCT ACCOUNTABILITY -- RAW MATERIAL, SPECIFICATIONS AND SPECIAL PROCESSES, & FUNCTIONAL TESTING SHALL BE ENFORCED TO DETERMINE ADHERENCE TO DESIGN REQUIREMENT

PACKAGING -- MINIMUM PACKAGING REQUIREMENTS SHOULD BE SAFE AND PRACTICALLY REASONABLE, BUT MUST ENSURE THE PRODUCT IS PACKAGED IN A MANNER THAT SECURES THE INTEGRITY OF FORM, DRAWING SPECIFICATIONS AND PROTECT FINISH COSMETICS FROM DAMAGE DURING HANDLING, MOVEMENT AND STORAGE.

MATERIALS

- PIPE: ASTM A53 GRADE B STANDARD WEIGHT STEEL PIPE; 1 1/2" DIAMETER CONSTRUCTED OF 90° BENDS WITH AN INSIDE RADIUS BEND OF 3 1/16" (± 1/8" SHOP TOLERANCE.)
- PLATE: ASTM A36 5/8" THICK PLATE WITH TWO 5/8" DIAMETER HOLES.
- BOLT: 1/2" DIAMETER x 1 1/4" LONG PIN HEX BUTTON SOCKET SECURITY BOLT, STAINLESS STEEL, OR APPROVED EQUAL.
- ANCHOR: 5/8" DIAMETER 2" LONG THREADED FOR 1/2" BOLTS

MATERIAL FINISH

- SANDBLAST.
- ZINC-RICH EPOXY PRIMER
- POLYESTER TRI-GLYCIDYLISOCYANURATE (TGIC) FINISH, 4 MIL THICK IN RAL COLOR #5010, GENTIAN BLUE

MOUNTING PROCEDURES

- ALL BICYCLE RACKS TO BE LOCATED IN CITY RIGHT-OF-WAY SHALL BE INSTALLED PER ADMINISTRATIVE RULE 10.09
- ALL BOLT HOLES IN THE CONCRETE PAVEMENT OR THE CONCRETE FOUNDATION SHALL BE PREDRILLED HOLES, 1/2" DIAMETER x 2" DEEP. NO PROTRUDING OR NON-FLUSH ANCHOR BOLTS SHALL BE USED. BOLTS TO BE INSTALLED USING LOCK TIGHT.
- FOR INSTALLATION IN PAVERS OR FOR CONCRETE PAVEMENT THAT IS LESS THAN 3" THICK, CONSTRUCT CONCRETE FOUNDATION IN ACCORDANCE WITH DETAILS SHOWN.
- FOR CONCRETE PAVEMENT THAT IS NOT LEVEL, USE HOT DIPPED GALVANIZED STEEL OR STAINLESS STEEL WASHERS TO LEVEL THE RACK AND SUPPORT PLATES BEFORE DRIVING ANCHOR BOLTS.

The selection and use of this Standard Drawing, while designed in accordance with generally accepted engineering principles and practices, is the sole responsibility of the user.	 City Engineer	
	Standard Drawing Title <h2 style="text-align: center;">BIKE RACK</h2>	
Note: All material and workmanship shall be in accordance with the City of Portland Standard Construction Specifications.	Effective Date: 05-12-2016	Standard Drawing No. <h1 style="text-align: center;">P-576</h1>
	Calc. Book No.: -	
	Baseline Report Date: -	