

Transportation Safety

JEOPARDY!

Laws - \$100

What are the lawful steps pedestrians must take before crossing at an intersection (with or without a light)?

Answer:

- Crossing at an intersection or designated mid-block crossing,
- Showing intent to cross, and
- Allowing drivers adequate time and distance to stop.

Laws - \$200

People riding or rolling must use _____ to indicate they are turning

Answer: Hand Signals

Laws - \$300

What are the three rules of right-of-way? (remember these are the rules that dictate who goes first on an all-way-stop or unmarked intersection).

Answer:

1st rule: 1st to stop at the intersection goes first

2nd rule: if more than 1 vehicle arrives at the same time, the furthest right goes first.

3rd rule: Left turning vehicles always must yield to vehicles going forward if both vehicles arrived at the intersection at the same time, or if the left turning vehicle is making a left mid-block.

Laws - \$400

Where can you ride e-scooters?

Answer: Bike lanes, greenways, on the right side of the street while going with flow of traffic.

Laws - \$500

How much distance does it take for a car to stop if it is going 20 mph?

- A. 110 ft (1/2 block approx.)
- B. 200 ft (3/4 block approx.)
- C. 375 ft (1 ½ blocks approx.)

Answer: A

- A. 20 mph needs 110 ft (1/2 block approx.)
- B. 30 mph. needs 200 ft (3/4 block approx.)
- C. 40 mph needs 375 ft (1 ½ blocks approx.)

Personal Security - \$100

What is a hate/bias incident?

Answer: Any incident that targets an individual/group based on their age, color, religion, disability (physical or mental), race, ethnicity, national origin, sex, gender, gender identity, sexual orientation and so on.

To report:

1. If you wish to prosecute, file a police report: 503-823-3333

2. If you do not wish to prosecute, contact Portland United Against Hate (PUAH): ReportHatePDX.com

Personal Security - \$200

What is assertive communication?

Answer: Having/showing confident statements and behavior by:

- Confident body language,
- Relaxed eye contact,
- Breathing from center,
- Relaxed and open in the torso, and
- Aware of surroundings

Personal Security - \$300

What are the benefits of assertive communication?

Answer:

- You communicate clearly;
- You maintain your confidence; and
- Shows you are not an easy target

Personal Security - \$400

Below is the 3-step model of assertive communication. Give an example of each:

1. Name it – What is the issue? say what behavior you find unsafe or that makes you uncomfortable
2. Frame it – Why is it a problem? use “I” statements to say what you don’t like: I need more personal space

3. Change it – What do you want them to do differently?
directly tell the person how you want them to change the behavior

Answer:

1. Name it: You are standing really close to me
2. Frame it: I need more personal space
3. Change it: Take a step back away from me (be direct).

Personal Security - \$500

What should you do if you are on Public Transit and experiencing a hate/bias incident?

Answer:

- Find an ally to help you;
- call 9-1-1,
- text TriMet's emergency number: 503-238-7433,
- contact a driver operator

Built Environment - \$100

Many intersections in Portland are labeled as *un-controlled* intersections. These are intersections that **do not** have traffic signals or stop signs to tell people who has right-of-way. How do you safely cross these types of intersections?

Answer: Treat it like an all-way stop using the 3 rules of right-of-way. A person driving/person rolling does not need to stop; however, they must slow down enough to make sure the intersection is clear.

Built Environment - \$200

List a benefit and a challenge of shared paths when rolling.

Answer:

- Benefits: no motorized vehicles to worry about
- Challenge: lots of pedestrians and new riders; faster riders must yield

Built Environment - \$300

What do this type of signs and street markings tell you about a road?



Answer: These streets are designed for people walking and rolling because speeds are low, and there is not as much traffic as other streets.

Built Environment - \$400

What are the purposes of the green boxes and dashed crossings?

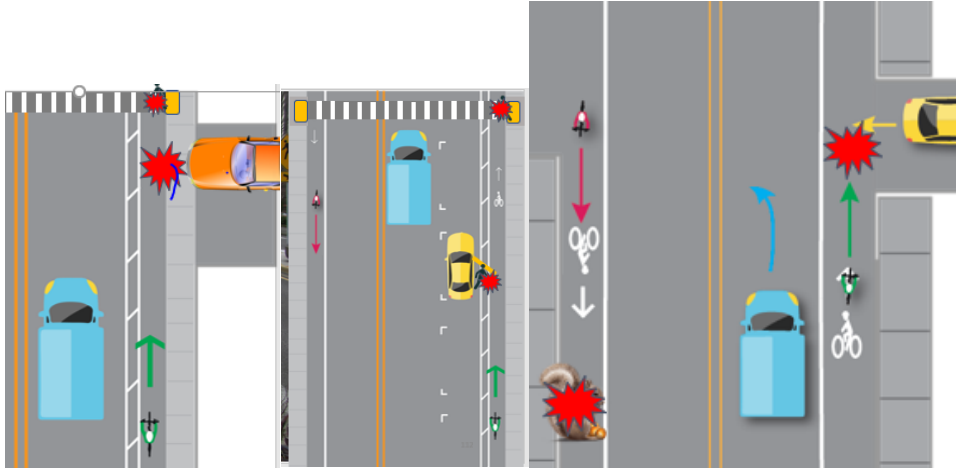


Answer: Increase visibility and to notify people driving that this is a commonly used area for e-scooters, bikes, skateboards etc.

Built Environment - \$500

List 2 potential conflicts people rolling need to be aware of when using a bike lane, protected bike lane or, buffered bike lane?

Answer:



- Doors opening,
- Pedestrians crossing,
- Vehicles turning, and
- Obstacles in the lane

Crash Prevention - \$100

One of the most common crash for people riding a bike, skating, or scooting are right hooks. A right hook is when a motorist makes a right turn directly in front of someone rolling, cutting them off. How will you prevent this type of crash?

Answer: Be AWARE and PREDICTABLE by

- People driving cars: check the right rear-view mirror before making turn, use right blinkers with anticipation of the turn, yield to people rolling on the right side of the road and in bike lanes.
- People rolling: as you approach intersections, look for right turn blinkers, make eye contact to make sure you are not in a blind spot.

Crash Prevention - \$200

One of the most common crashes for people walking in Portland happen when vehicles turn left at a traffic signal. How can you prevent this type of crash?

Answer: Be AWARE and PREDICTABLE by

- People driving: make sure they look for pedestrians at all crosswalks before turning into the intersection. Their attention should be split before finding a gap and looking for the crosswalk to be clear.
- People walking: while crossing at a traffic light, stop before you enter each travel lane and look over your shoulder and to the side to make sure turning drivers see you and have stopped for you, when possible make eye contact with drivers and be as visible as possible. And put away distractors such as phones while at the intersection.

Crash Prevention - \$300

Where on the street do most pedestrian crashes take place in Portland?

- A. Intersections
- B. Mid-block crossings
- C. Driveways

Answer: A. Intersections

70% of pedestrian crashes occur at intersections, 35% of all pedestrian crashes occur at intersections with Traffic Lights

Intersections have traffic lights due to the high number of vehicles and pedestrians using it at any given moment. Because of the large number of competing risks, drivers and pedestrians must be extra cautious while crossing busy intersections.

Crash Prevention - \$400

One of the main causes of crashes in Portland is low visibility. List 2 ways to be visible as a person walking or rolling in the right-of-way?

- Wear reflective, bright clothing, and bring a light
- Roll predictably in a straight line avoid, and avoid getting in between parked cars, or in the driver's blind spots.

Crash Prevention - \$500

To keep yourself and others safe while on the road it is recommended to be:

Aware, Lawful, Predictable, Assertive, Considerate and Able-To-Be-Seen. These are known as the *ALPACA* Principles.

Can you give an example of each Principle?

Answer:

- Aware: Disconnect from music and devices, shoulder check and make eye contact.
- Lawful: Follow Traffic rules such as the 3 rules of right-of-way
- Predictable: Avoid Jumping up and down curbs, and signal before turning.
- Assertive: Move and communicate with other road users clearly and with confidence.
- Considerate: Respect your space and the space of others.
- Able-to-be-Seen: avoid walking rolling between parked cars, carry lights/reflectors.

Wild Card - \$100

It is recommended for everyone, but the law states that people under 16 are required to wear a _____.

Answer: Helmet!

Wild Card - \$200

Pedestrians may not enter a crosswalk once _____ starts to flash.

Answer: Pedestrian hand signal or countdown.

It is important that pedestrians do not begin crossing when the red hand is flashing even if the countdown signal indicates adequate time for you to cross.

Wild Card - \$300

How can people rolling, or walking stay alert while on the street, particularly at intersections?

Answer:

- Turning off music and electronic devices before crossing the street;
- Making eye contact; and
- Looking behind them before merging in and out of traffic.

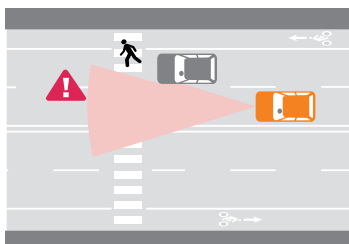
Wild Card - \$400

About half of the deadly crashes in Portland are caused by unsafe speeds. To eliminate deaths and serious injuries, the City of Portland has set neighborhood speed limits to what?

- **Answer:** 20 mph. 20 is plenty!

Wild Card - \$500

This scenario is considered a *double threat*.



The driver in the orange car may not stop for the pedestrian because their vision is obstructed by the grey car. As a result, the driver in the orange car may not be aware they need to stop.

How can you avoid it?

Answer: When walking, look for oncoming vehicles: before you begin to cross, as you cross, and as you enter each lane of traffic. Remember to make eye contact with drivers

Final Jeopardy Question

What can you do if someone is acting hateful, but it's not directed at you?

Answer: Be an active bystander

- keep yourself safe,
- ask people being targeted what they need,
- Ignore perpetrator, and/or
- recruit other allies to help!