



NORTH PORTLAND IN MOTION

Pedestrian Advisory Committee
August 16th, 2022

Tonight's Agenda

- **Welcome to North Portland in Motion!**
- **What We've Heard:** Public Engagement Highlights
- **Confirming Needs and Project Types**
- **Project Ideas Overview**
- **What's Next for North Portland in Motion**

Welcome to North Portland in Motion!

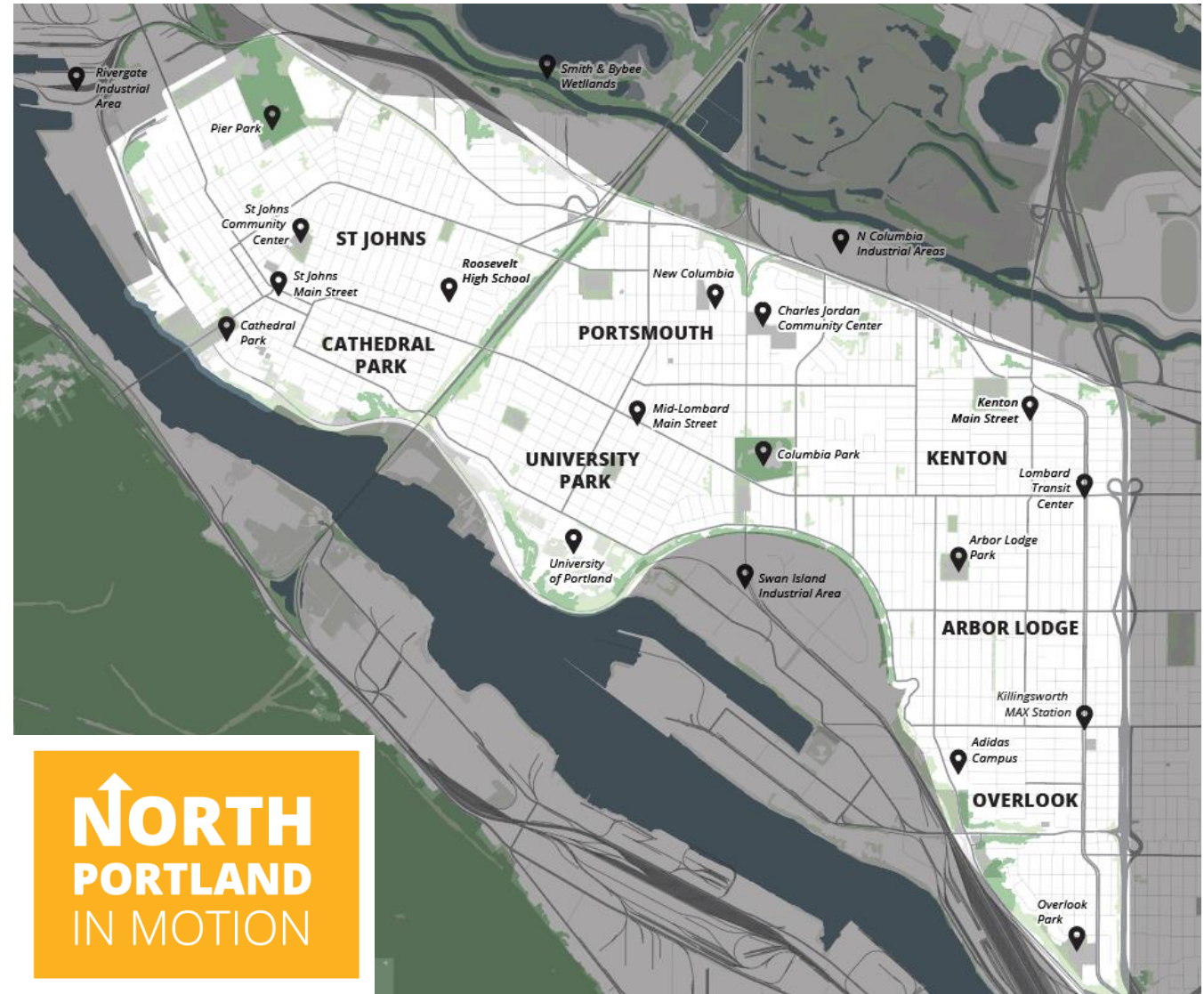
North Portland in Motion is a planning effort to **identify transportation needs and near-term investments** to improve **access to community destinations, improve the safety of our streets, and support walking, biking, and transit** use in the North Portland peninsula



Study Area

North Portland in Motion focuses on the residential and commercial areas of North Portland west of Interstate 5.

The North Portland in Motion study area is defined by both natural and human-made edges, including rivers, bluffs, highways, railroads, and industrial areas.

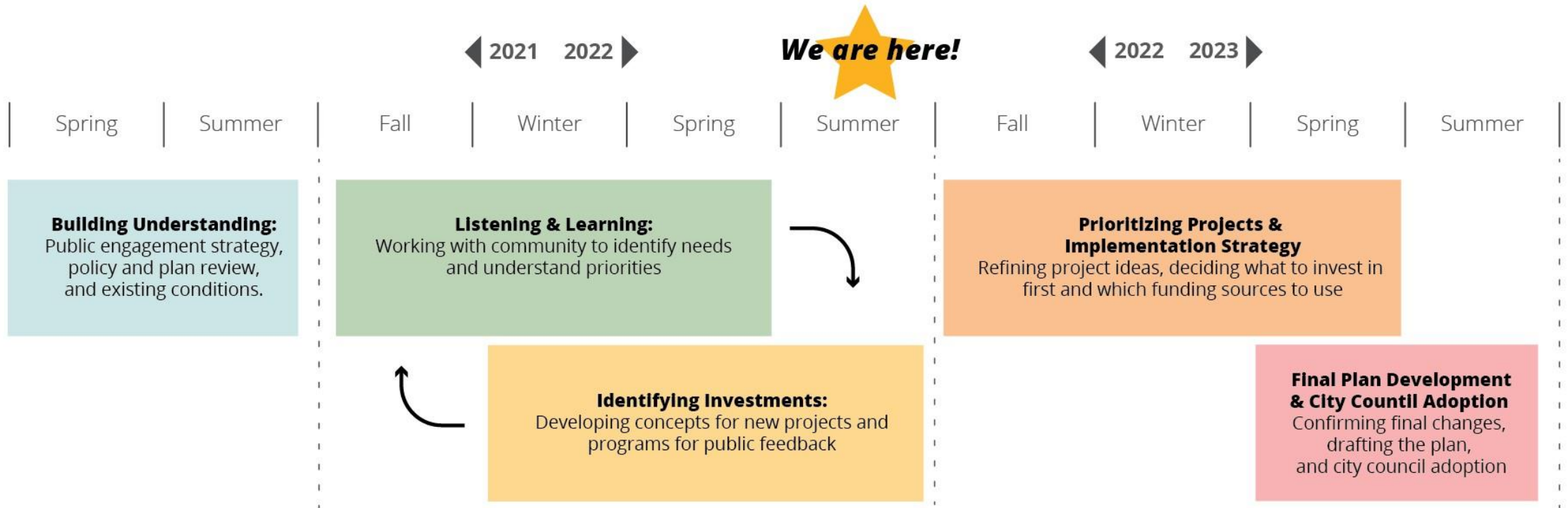


Project Goals

- 1 Engage deeply with North Portlanders to understand transportation needs and barriers to meeting daily mobility needs.
- 2 Identify a near-term prioritized investment strategy of projects and programs to improve conditions for walking, biking, and transit.
- 3 Build new relationships with community-based organizations to represent the diverse neighborhoods and communities within North Portland.



Project Timeline

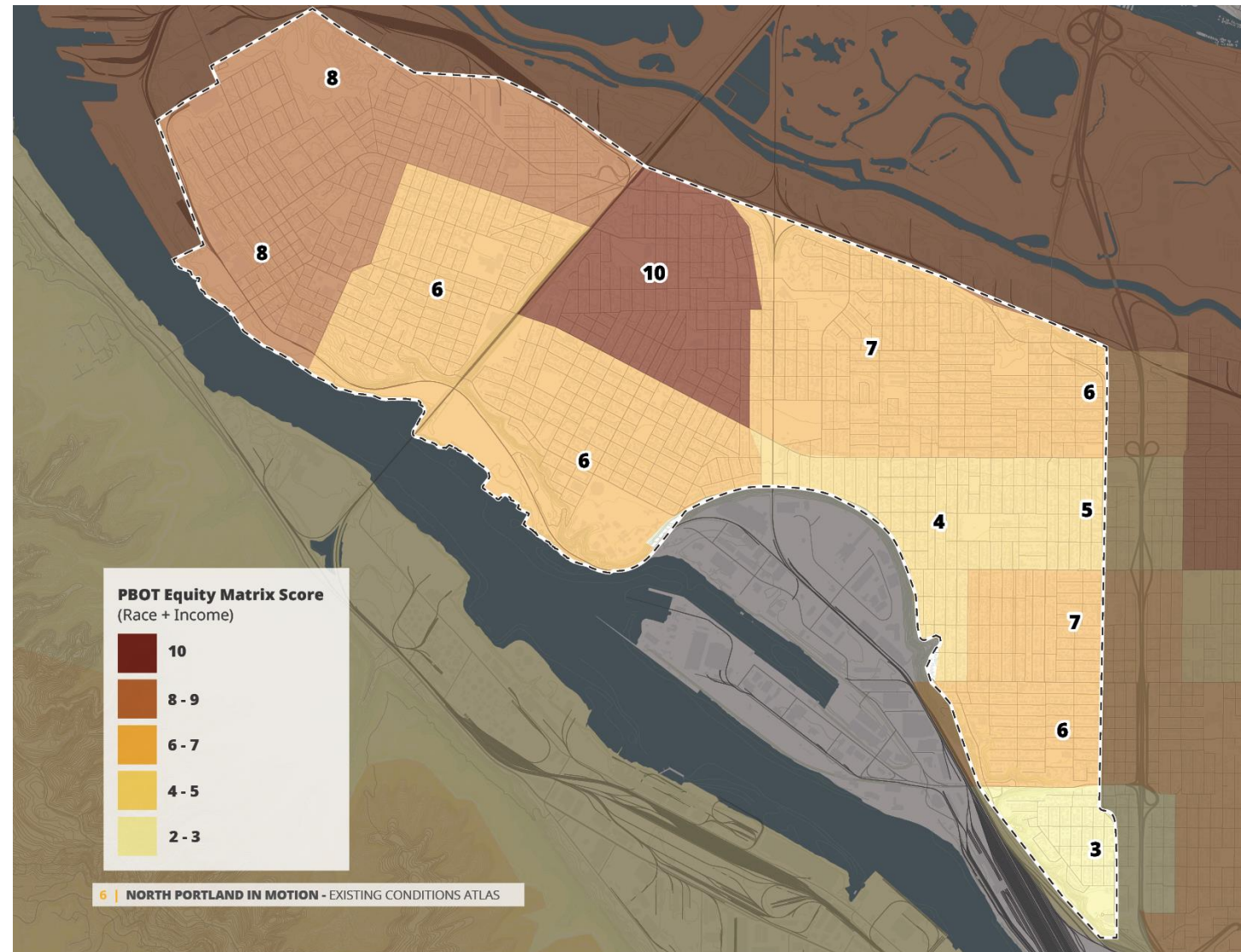


An Equity Priority

Equity is a central focus of this project.

North Portland is more **racially diverse** and has a **higher share of people living on lower incomes** than the City of Portland as a whole.

Throughout this project we are **elevating voices from North Portland's diverse communities**, especially those who may have not been historically represented.





WHAT WE'VE HEARD:

Public Engagement Highlights

Public Engagement to Date

- 1 KICK-OFF SURVEY**
June 2021 to August 2021
- 1 ONLINE OPEN HOUSE**
December 2021 to February 2022
- 4 COMMUNITY ADVISORY GROUP MEETINGS**
- 4 COMMUNITY WALKS & RIDES**
- 2 POP-UPS & TABLING EVENTS**

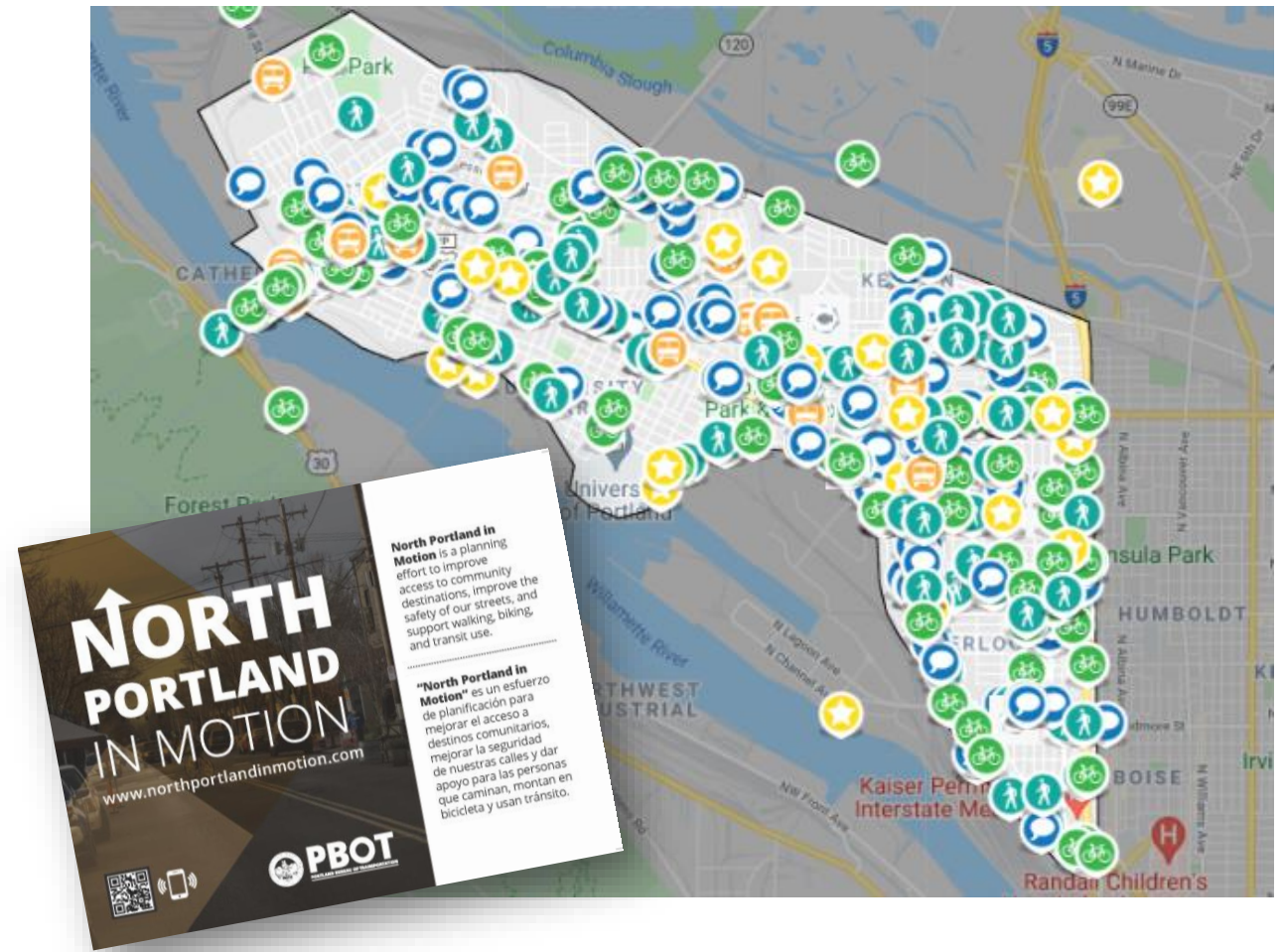
- 7 FOCUS GROUPS & WORKSHOPS**
 - St Johns Small Businesses
 - New Columbia Residents
 - Renaissance Commons (Kenton) Residents
 - Community Cycling Center / Safe Routes to School
 - Miraflores / Hacienda CDC Wayfinding Workshop
 - Oregon Walks
 - BikeLoud PDX

20+ PRESENTATIONS & LISTENING SESSIONS



Key Themes from Online Open House #1

- **Over 1,300 unique visitors** to the Online Open House
- **349 responses** to the corresponding survey
- **138 participants** submitted a total of **543 comments** on the map



What makes it difficult to walk?

- Many shared that it is **difficult to cross busier streets** due to **lack of safe crossings**
- Many noted **gaps in the sidewalk network** or **inaccessible sidewalks** due to poor condition or lack of ADA access
- A need for more **streetscape amenities** including additional **street trees, lighting, and wayfinding**



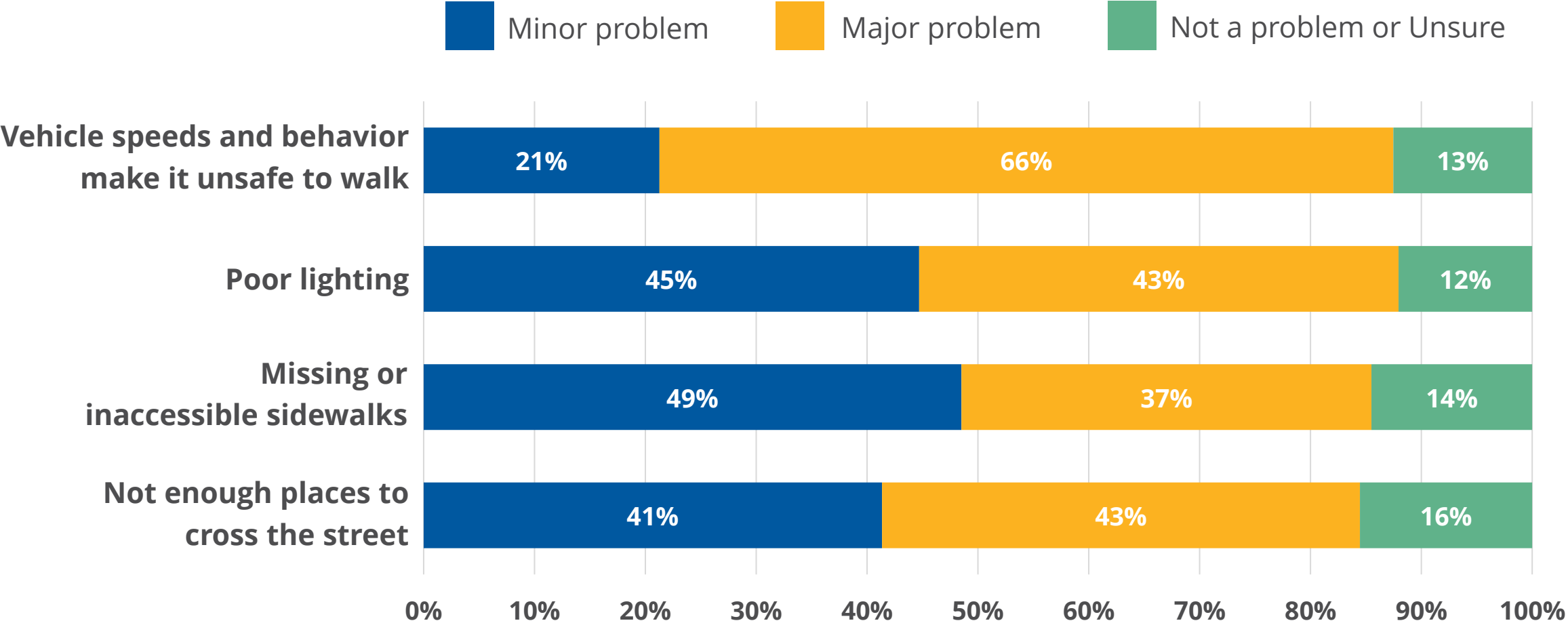
Where are important community destinations?

- **Areas in St. Johns**, including St. Johns City Park, the Community Center, Downtown St Johns, and St. Johns Plaza
- **Charles Jordan Community Center**
- **Downtown Kenton businesses**
- **Major Parks including:**
 - Kenton Park
 - Columbia Park
 - Cathedral Park
 - Arbor Lodge Park



Survey Responses:

What makes walking difficult in North Portland?



St Johns Small Businesses

MAJOR TAKEAWAYS:

- A desire to **support activation, programming, and investments** in the plaza in Downtown St Johns.
- A need for **more frequent, safer crossings** to improve ped and bike access to the Lombard Main St area.
- A desire to **better unify and connect the various nodes** of small business activity through **wayfinding and signage**.



New Columbia, Portsmouth

MAJOR TAKEAWAYS:

- People **prefer to get around by walking to most neighborhood destinations** including parks and commercial areas.
- **Speeding** was listed as a major safety concern on busier streets.
- Residents **shared concerns about personal safety** while traveling on foot or by transit.



Renaissance Commons, Kenton

MAJOR TAKEAWAYS:

- Most residents don't have access to a vehicle and **rely on walking and public transit to get around.**
- **Speeding vehicles** is a top concern.
- **Improved or new crossings** are needed on busier streets.
- **Improved bus shelters with seats and protection from the elements** are a major priority.



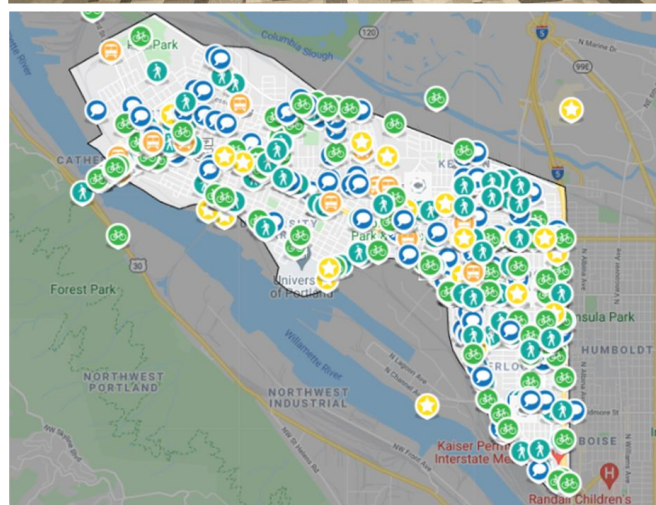
Miraflores Wayfinding Workshop

MAJOR TAKEAWAYS:

- Participants noted **lighting needs** along important walking routes and off-street trails.
- Families prefer to walk to neighborhood parks and schools using **calm, quiet, local streets**.
- Residents shared a **preference for high-quality crossings of busier streets** with good visibility and active/enhanced elements.



Any questions about
public engagement
activities or key
takeaway?



CONFIRMING NEEDS & PROJECT TYPES

What makes a good North Portland in Motion project?

Identifying projects that are:

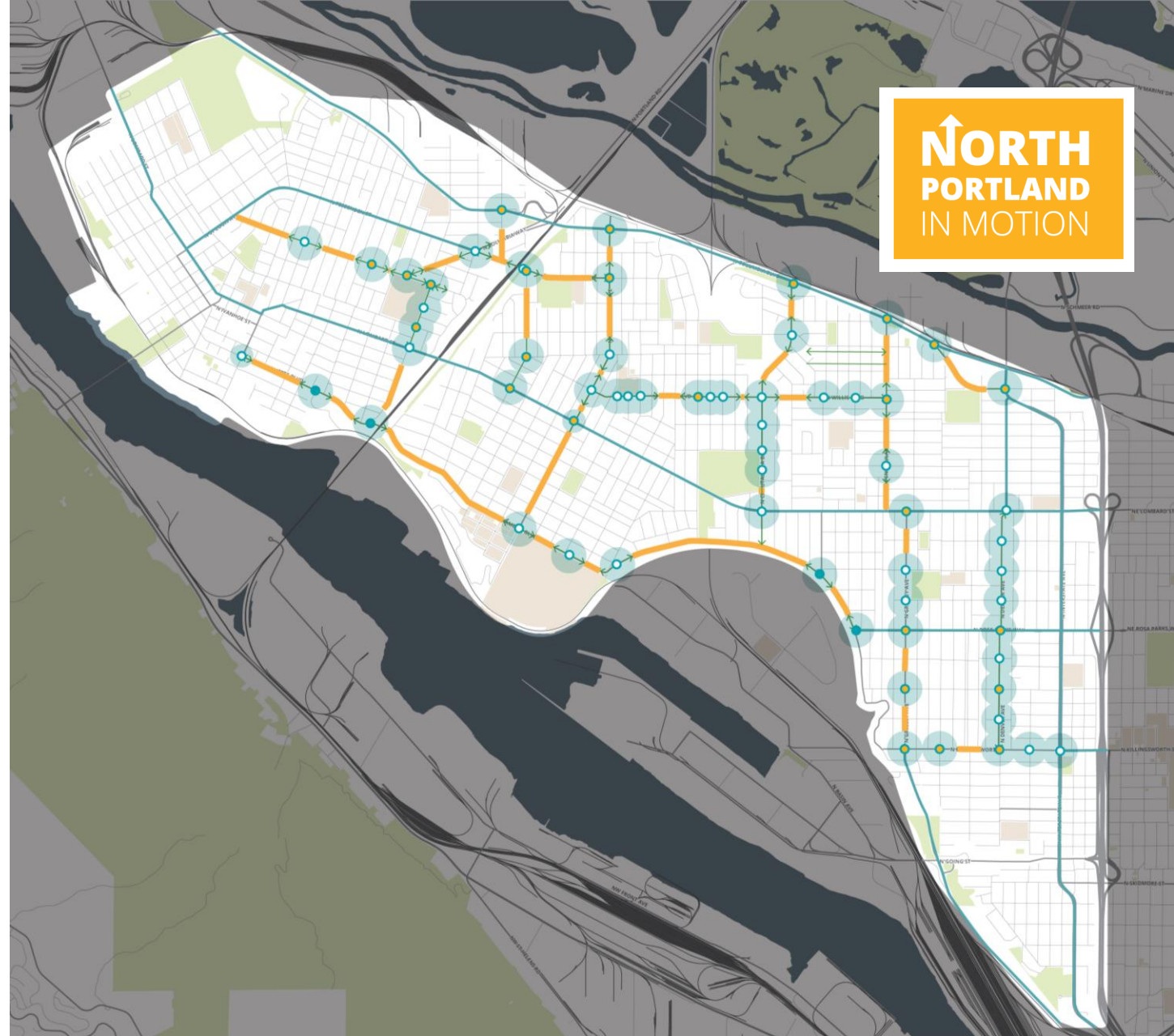
- Responsive to **community identified priorities**
- Aligned with **PBOT's transportation goals & policies**
- Able to be **delivered in the near-term by PBOT**



Crossing Gaps

Our team analyzed every busy street in North Portland for **long distances between safe crossings**.

We utilized PedPDX guidance, which calls for a crossing **every 800ft on major streets**, and **every 530ft in busy commercial districts**.

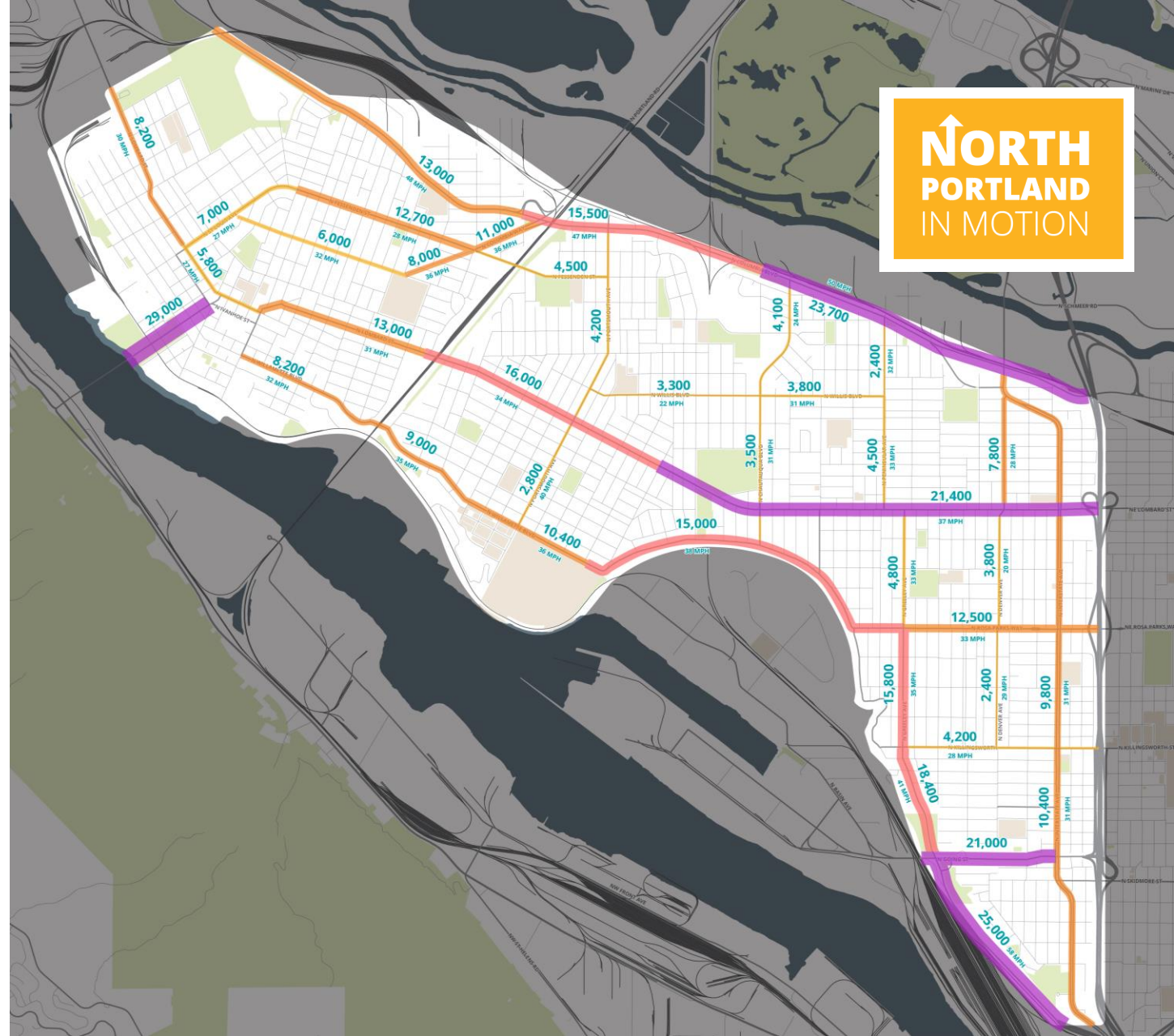


Vehicle Speeds & Volumes

Our team also **conducted speed and volume counts** on the busy streets in North Portland.

We found **excessive vehicles speeds on many streets**, confirming the need to reduce illegal speeding throughout the peninsula.

Speed and volume are important because they are some the key **factors for determining crossing types and accessible bikeway design**.

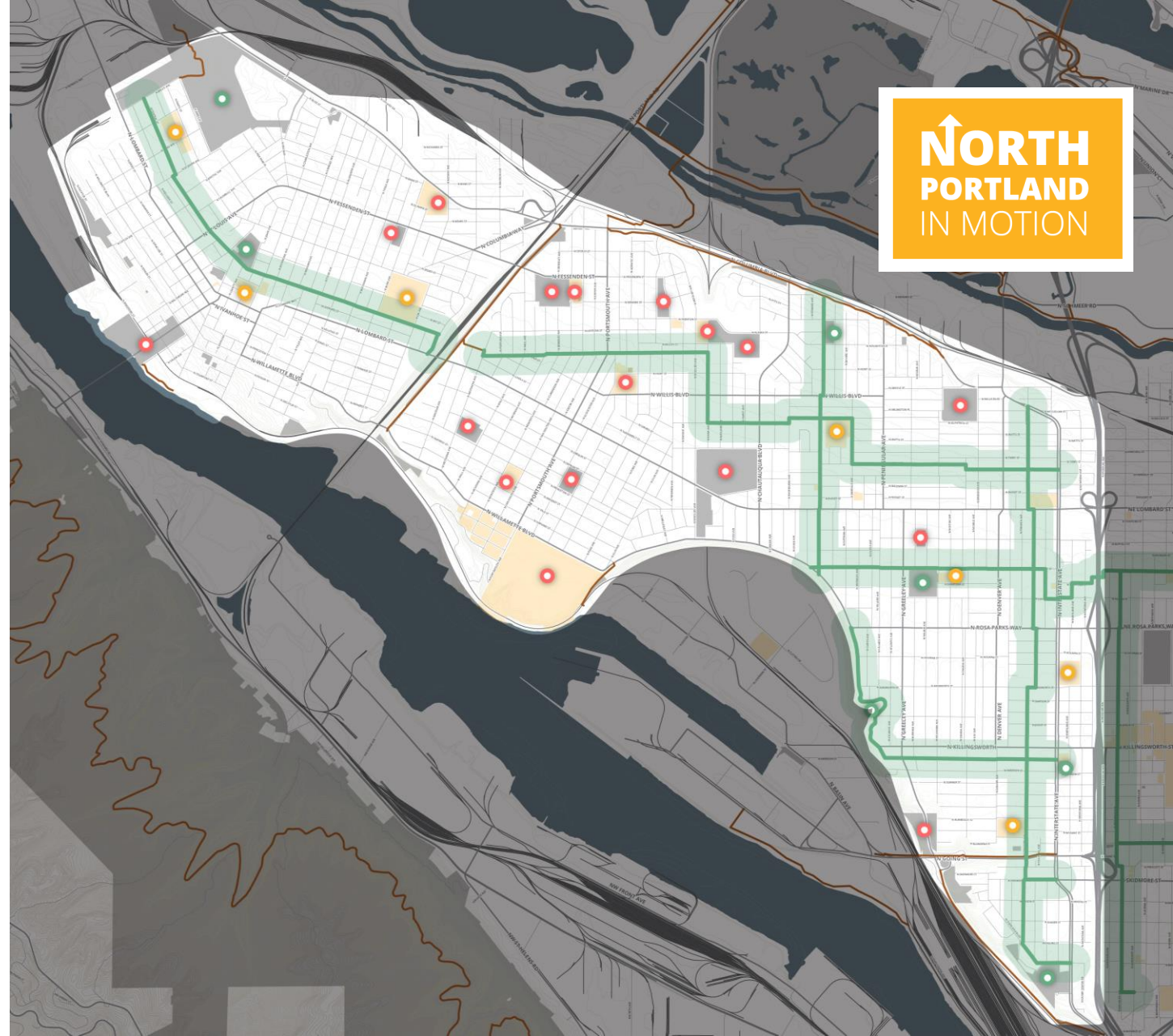


Neighborhood Greenways

Neighborhood Greenways play a vital role in connecting people to important **community destinations like parks and schools**.

However, many of these important destinations **are not served by today's Neighborhood Greenway network**.

North Portland in Motion seeks to establish a **peninsula-wide network** of Neighborhood Greenways to **connect every school, park, and commercial district**.



North Portland in Motion Project Types

We want to begin a conversation about new project ideas by introducing **4 project types**.

Each project type is **responsive to the needs and context of the street**.

NORTH PORTLAND IN MOTION PROJECT TYPES:

Corridor Improvements

Neighborhood Greenways

Critical Connections

Public Spaces & Mobility Hubs

Together, they build a **complete and comprehensive network of safer, more accessible streets**.

Corridor Improvements



Investments to **reduce speeding** and **improve the safety and comfort of people** traveling along **busier streets in the neighborhood**.

PROJECT ELEMENTS



SAFER SPEEDS



BETTER CROSSINGS



BIKE ROUTES



TRANSIT IMPROVEMENTS

Neighborhood Greenways



Neighborhood greenways are **calm, low-speed shared neighborhood streets** that connect people to community destinations like schools, parks, commercial areas.

PROJECT ELEMENTS



BETTER CROSSINGS



BIKE ROUTES



COMMUNITY DESTINATIONS



SAFER SPEEDS

Critical Connections



These high-priority projects **bridge major barriers connecting North Portland neighborhoods** to each other and the rest of the City of Portland.

PROJECT ELEMENTS



BIKE ROUTES



SAFER SPEEDS



BETTER CROSSINGS

Public Spaces & Mobility Hubs



Projects and partnerships that help create places of **community, connection, information exchange, and activation.**

PROJECT ELEMENTS



PLACES TO CONNECT



COMMUNITY DESTINATIONS



TRANSIT IMPROVEMENTS



BETTER CROSSINGS

PROJECT IDEAS OVERVIEW

North Portland in Motion Project Ideas

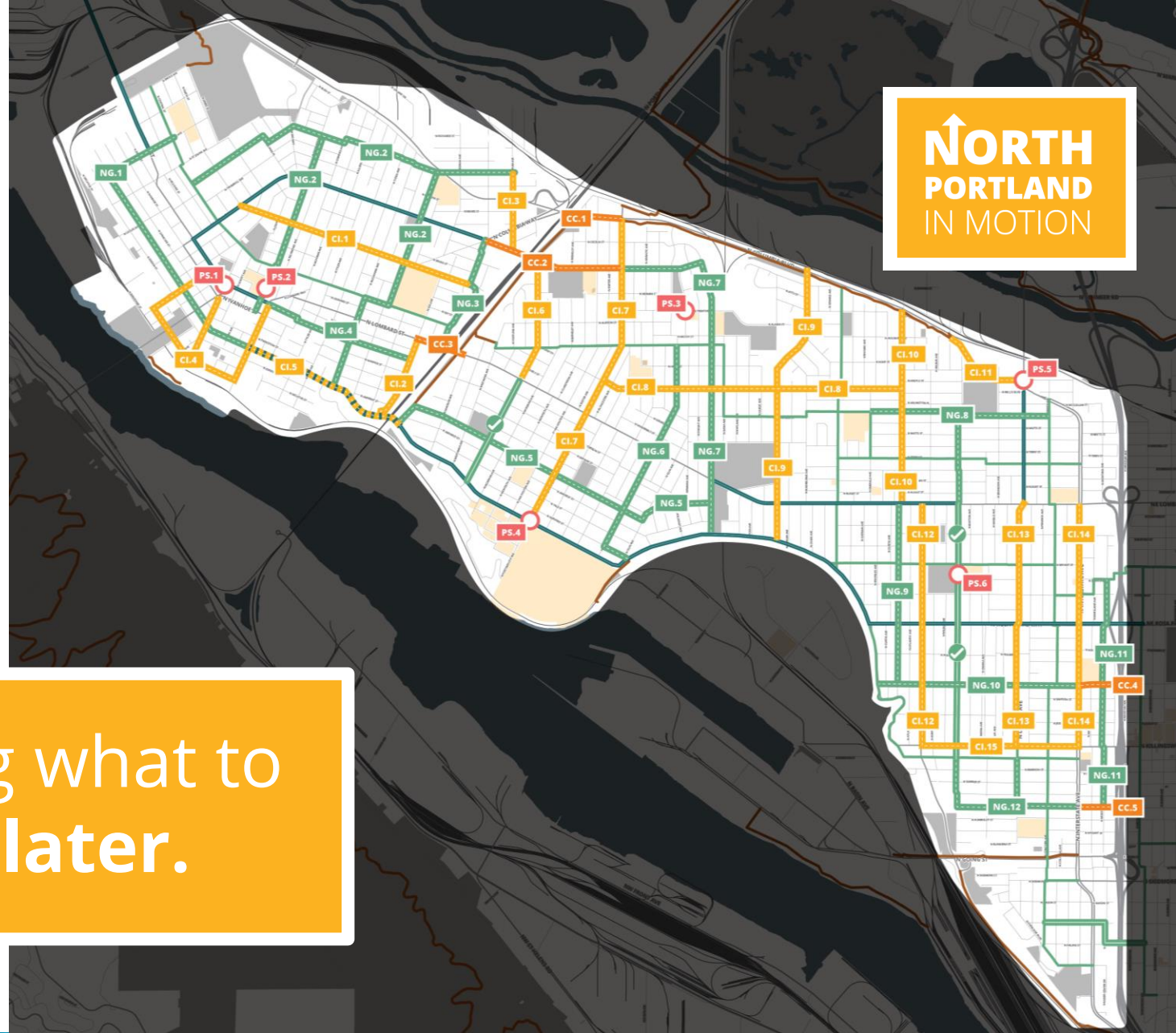
15 Corridor Improvements

12 Neighborhood Greenways

5 Critical Connections

6 Public Spaces & Mobility Hubs

We need help deciding what to
build now, next, and later.



There's a LOT of project ideas.

In order to better communicate the long-list of project ideas, we're introducing **3 project sub-areas**.

Upper-Peninsula

St Johns & Cathedral Park

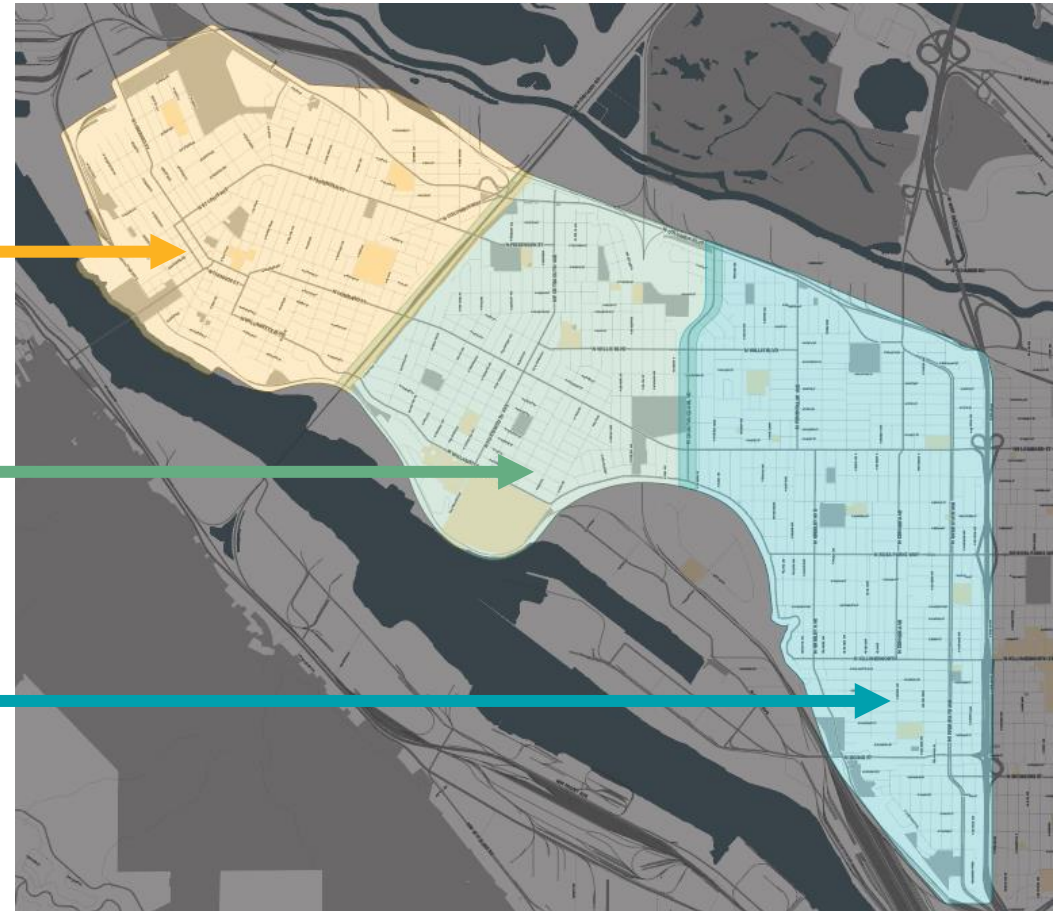
Mid-Peninsula

Portsmouth, University Park, & New Columbia

Inner-Peninsula

Kenton, Arbor Lodge, & Overlook

PROJECT SUB-AREAS:



Upper Peninsula Project Ideas: St Johns, Cathedral Park



CORRIDOR IMPROVEMENTS

CI.1	N Smith Corridor Improvements	CI.4	Cathedral Park Access Improvements
CI.2	N Ida Corridor Improvements	CI.5	N Willamette Blvd Corridor Improvements Early Implementation of Federally Funded Project
CI.3	N Macrum Corridor Improvements		

NEIGHBORHOOD GREENWAYS

NG.1	N Willamette / Reno Neighborhood Greenway	NG.3	N Gilbert Neighborhood Greenway Extension
NG.2	Upper St Johns Greenway Network & Traffic Calming (N Burr, N Charleston, N Bank)	NG.4	Lower St Johns / Cathedral Park Greenway Network & Traffic Calming (N Jersey, N Buchanan)

CRITICAL CONNECTIONS

CC.1	N Columbia Critical Connection	CC.3	N Lombard Critical Connection
CC.2	N Fessenden Critical Connection		

PUBLIC SPACES & MOBILITY HUBS

PS.1	Downtown St Johns Plaza	PS.2	Charleston Street Plaza
------	-------------------------	------	-------------------------

Mid-Peninsula Project Ideas: Portsmouth, New Columbia, University Park



CORRIDOR IMPROVEMENTS

CI.6	N Wall Corridor Improvements	CI.8	N Willis Corridor Improvements
CI.7	N Portsmouth Corridor Improvements	CI.9	N Chautauqua Corridor Improvements

NEIGHBORHOOD GREENWAYS

NG.5	N Princeton Neighborhood Greenway	NG.7	N Woolsey Neighborhood Greenway
NG.6	N Fiske Neighborhood Greenway	✓	N Wall Neighborhood Greenway

CRITICAL CONNECTIONS

CC.1	N Columbia Critical Connection	CC.3	N Lombard Critical Connection
CC.2	N Fessenden Critical Connection		

PUBLIC SPACES & MOBILITY HUBS

PS.3	New Columbia Mobility Hub	PS.4	University of Portland Mobility Hub
------	---------------------------	------	-------------------------------------

Inner Peninsula Project Ideas: Kenton, Arbor Lodge, Overlook



CORRIDOR IMPROVEMENTS

CI.8	N Willis Corridor Improvements	CI.12	M Greeley Corridor Improvements
CI.9	N Chautauqua Corridor Improvements	CI.13	N Denver Corridor Improvements
CI.10	N Peninsular Corridor Improvements	CI.14	N Interstate Corridor Improvements
CI.11	N Argyle Corridor Improvements	CI.15	N Killingsworth Corridor Improvements

NEIGHBORHOOD GREENWAYS

NG.8	Kenton Neighborhood Greenway Network & Traffic Calming (N Kilpatrick, N Halleck, N Delaware)	NG.11	M Montana Neighborhood Greenway
NG.9	N Villard Neighborhood Greenway	NG.12	North Overlook Neighborhood Greenway Network & Traffic Calming (N Alberta, N Denver, N Delaware Extension)

NG.10	N Ainsworth Neighborhood Greenway		
✓	N Delaware Neighborhood Greenway	✓	N Shaver / Failing Neighborhood Greenway

CRITICAL CONNECTIONS

CC.4	N Ainsworth Critical Connection	CC.5	N Alberta St Critical Connection
------	---------------------------------	------	----------------------------------

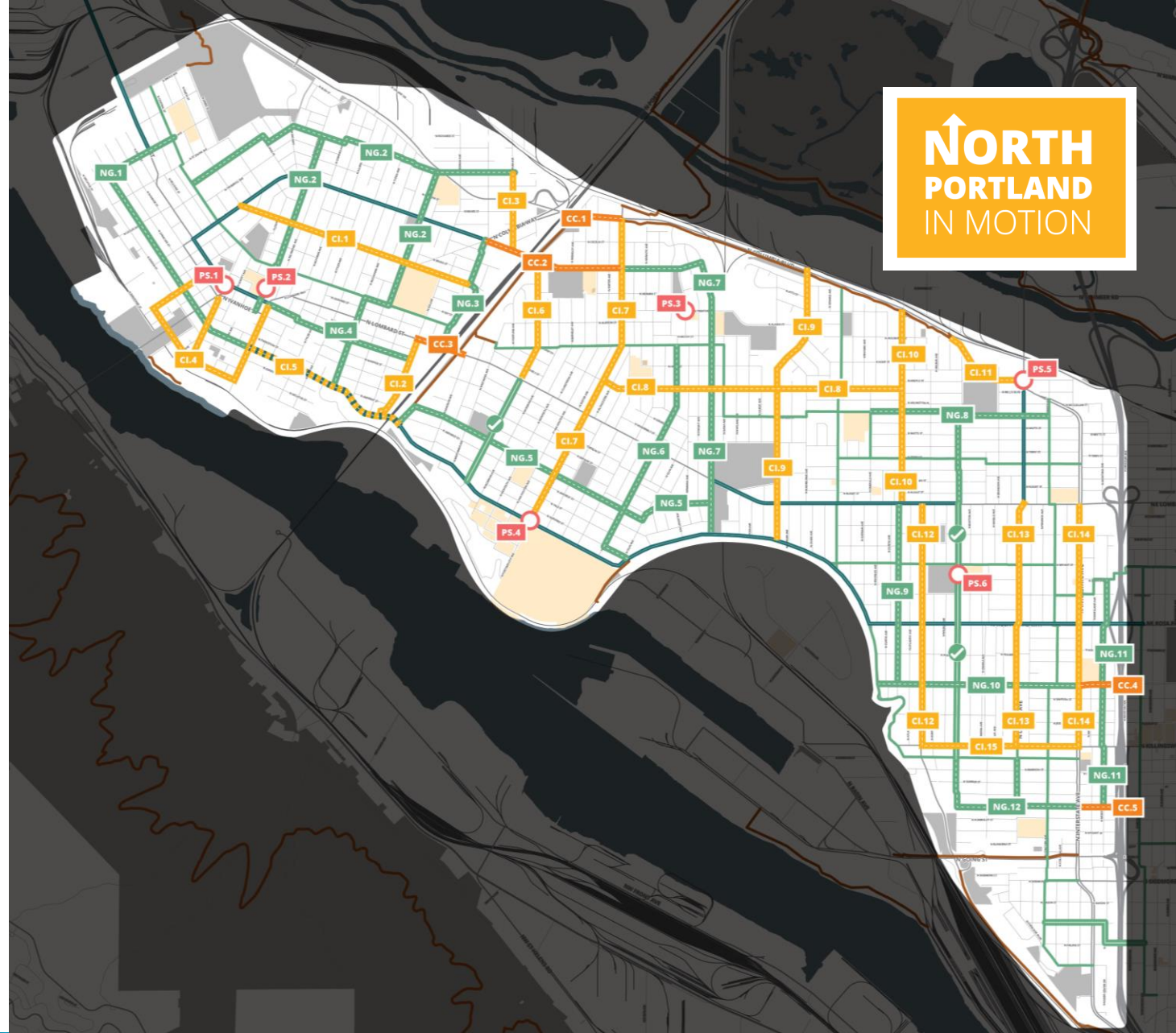
PUBLIC SPACES & MOBILITY HUBS

PS.5	Downtown Kenton Mobility Hub	PS.6	Arbor Lodge Park Plaza
------	------------------------------	------	------------------------

North Portland in Motion Project Ideas

Any questions about
specific project ideas or
project types?

Which projects do you
think are most urgently
needed?



WHAT'S NEXT?

Next Steps for North Portland in Motion

- **Pop-Up Project Ideas Open Houses:**
 - New Columbia / Our Village Gardens– July 30th
 - Kenton Farmers Market – August 17th
 - St Johns Farmers Market – August 20th
- **Project Ideas Online Open House:**
 - Runs August 20th to September 30th
- **Public Engagement Summary: Listening & Learning** – August 20th
- **Steptember Walks with Oregon Walks** – September TBD
- **Prioritized Project List & Program Ideas Report** – Fall 2022



Project Timeline





Thank you!

Mike Serritella

Transportation Planning

mike.serritella@portlandoregon.gov