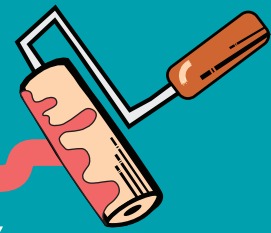


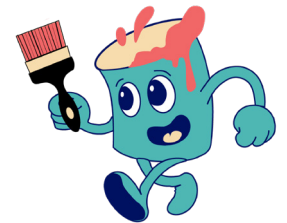
# NE BROADWAY

## Main Street Pave & Paint Safety Summary



### Repaving as a Safety Opportunity

In Summer 2025, PBOT will repave NE Broadway between NE 24th Ave and NE 11th Ave as part of our ongoing commitment to maintaining our transportation system. It's an opportunity to consider changes to how space is laid out between the curbs to improve safety, access, and support a vibrant main street.



Between NE 7th Ave and NE 24th Ave from 2013 to 2023 there were:



27

Crashes involving pedestrians



251

Crashes



8

Serious Injury Crashes



**PBOT**  
PORTLAND BUREAU OF TRANSPORTATION

# NE Broadway Safety at a Glance

Between 2013 and 2023, there were a total of 251 crashes on NE Broadway with 70% of crashes happening between NE 7th Avenue and NE 16th Avenue and 30% between NE 16th Avenue and NE 24th Avenue. There were 27 crashes involving pedestrians, with seven (7) including wheelchairs, skateboards, scooters, and other multi-modal devices. All of the pedestrian crashes occurred at intersections with nearly half occurring at NE 14th Avenue, NE 15th Avenue, and NE 21st Avenue. 21 of the 27 pedestrians were in a marked crosswalk during the crash. There were eight (8) serious injury crashes including three (3) pedestrians, two (2) motorcycles, and three (3) vehicle crashes. There were zero (0) fatal deaths during this time period.

## WHAT WE'VE HEARD:

- Vehicle speeds are too fast
- Safety concerns, especially for people walking and biking
- A need for more frequent and safer pedestrian crossings



## Some Ideas We Are Exploring to Improve Safety:



Enhanced Pedestrian Crossings



Lower speed limits and adjusted signal timings



Improved bike lane design

Visit our website and sign up for project email updates:  
[Portland.gov/BroadwayPave](https://portland.gov/BroadwayPave)

Questions? Get in touch:  
[BroadwayPave@portlandoregon.gov](mailto:BroadwayPave@portlandoregon.gov)

