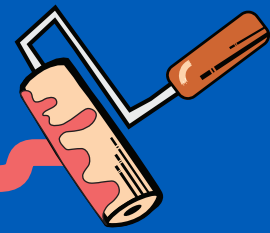


NE BROADWAY



Main Street Pave & Paint Policy History

Two key plans have shaped NE Broadway over the last 30 years and led us to our current project.

Broadway Weidler Corridor Plan - 1996

This plan set the original vision for the Broadway/Weidler corridor from the river to NE 24th Ave in 1996 and called for enhancement of the existing one-way couplet. The plan envisions Broadway and Weidler as thriving commercial and mixed-use streets, with multi-modal access along the entirety of the corridor. It was the impetus for the bike lanes that exist today and calls for wider sidewalks and more pedestrian crossings along the entirety of the corridor, curb extensions at intersections, and a continuous and consistent streetscape.



The Broadway/Weidler corridor is a very important connection for all modes.

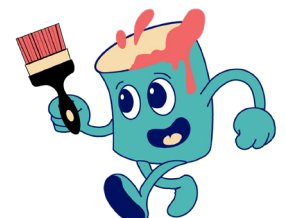


Transportation System Plan (TSP) - 2018

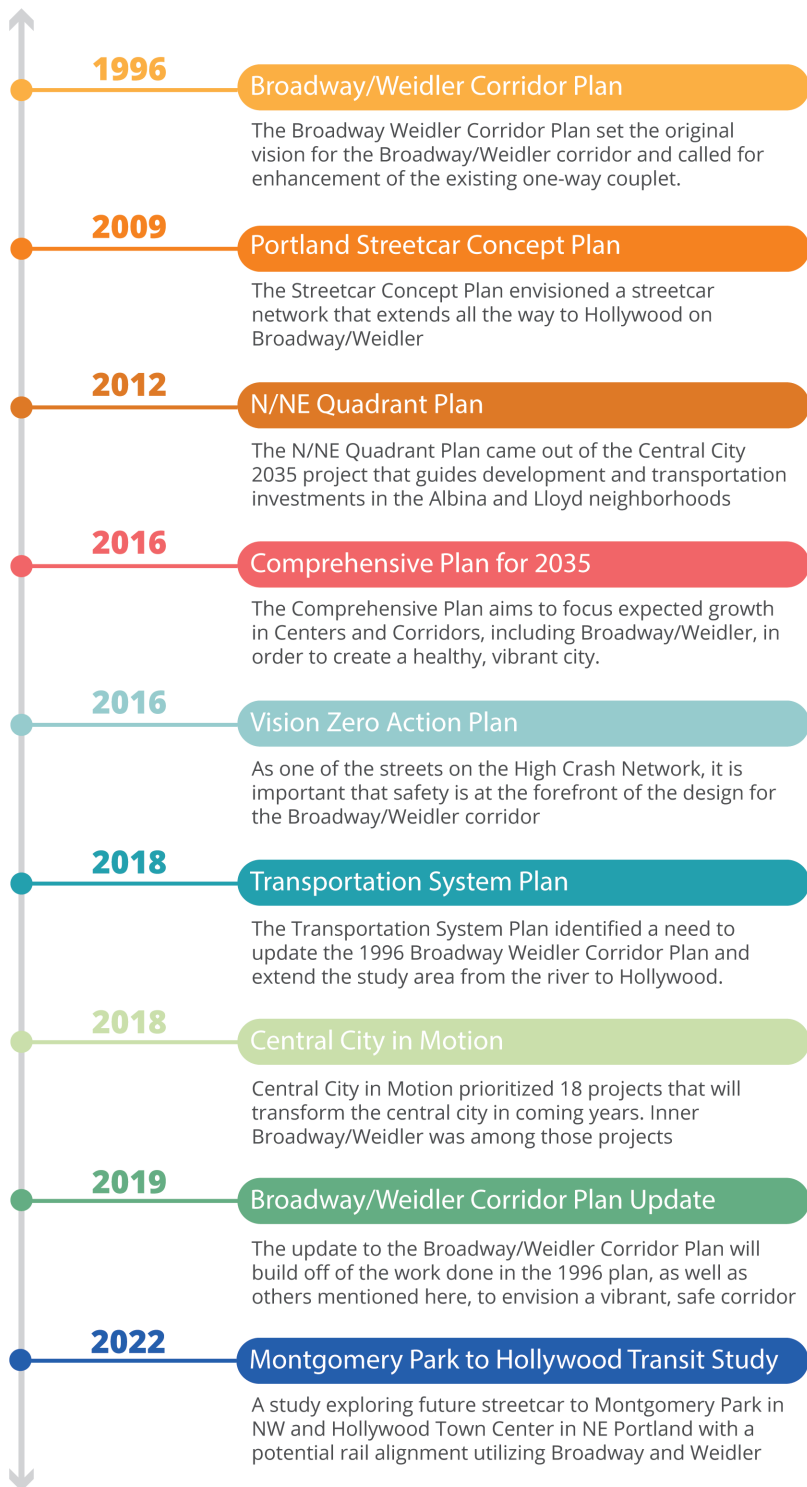
The TSP identified a need to update the 1996 Broadway Weidler Corridor Plan and extend the study area from the river to Hollywood Town Center. The focus of this update should be on “pedestrian and bicycle safety and access, transit speed and reliability, traffic management, business district vitality, streetscape environment, freight access, traffic signals and crossings, access management, and parking management.” The Transportation System Plan also designates classifications for each street, which are outlined to the left.



PBOT
PORTLAND BUREAU OF TRANSPORTATION



NE Broadway Full Policy History



Visit our website and sign up for project email updates:
Portland.gov/BroadwayPave

Questions? Get in touch:
BroadwayPave@portlandoregon.gov

