

Ross Island Bridgehead/ Naito Parkway Main Street Project Public Event #1 - 11/20/19



Bureau of Planning and Sustainability
Innovation. Collaboration. Practical Solutions.
City of Portland, Oregon



PBOT
PORTLAND BUREAU OF TRANSPORTATION

In coordination with our regional partners TriMet and Metro

Welcome!

Tonight you can:

- Listen to this presentation (6:00 and 7:00 pm)
- Talk with technical staff
- Provide feedback

The City of Portland ensures meaningful access to city programs, services, and activities to comply with Civil Rights Title VI and ADA Title II laws and reasonably provides: translation, interpretation, modifications, accommodations, alternative formats, auxiliary aids and services. To request these services, contact 503-823-5185, City TTY 503-823-6868, Relay Service: 711.



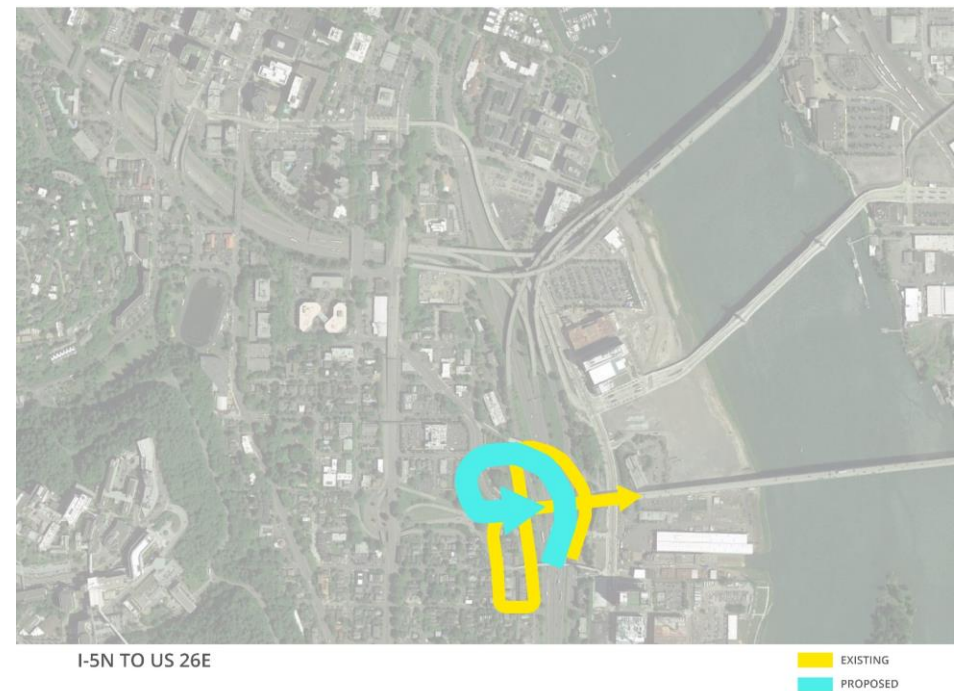
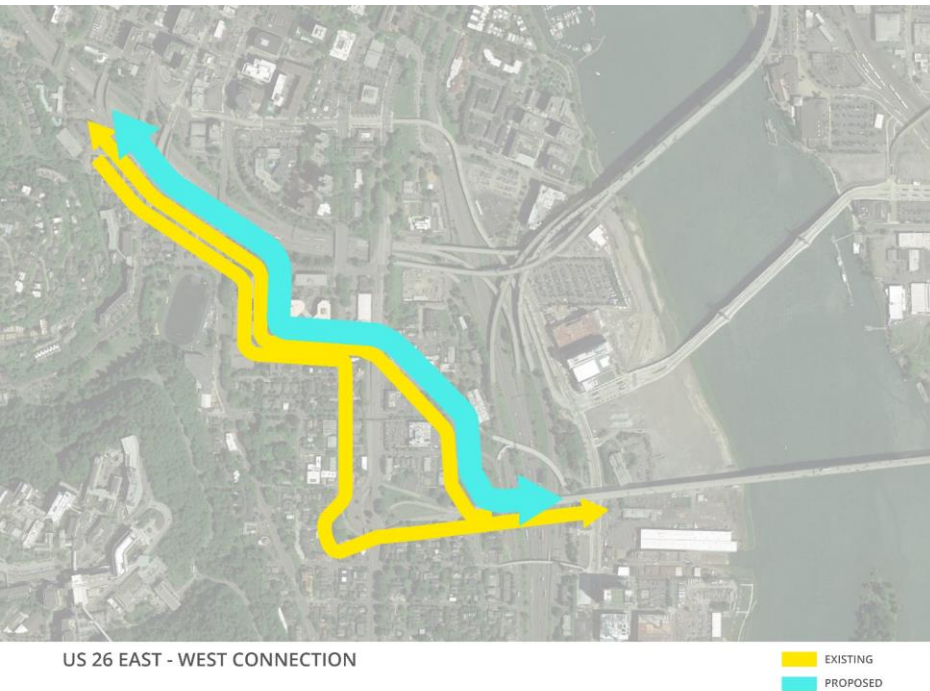
Why are we here tonight?

- To share ideas and gather input about a regional project that can help stitch South Portland Neighborhoods back together
 - Naito Parkway
 - Ross Island Bridgehead
- Understand the lasting impacts of past regional projects that broke apart ethnic neighborhoods and communities

Your comments will help the technical team create draft designs for transportation and land use solutions. We'll bring those designs back to you in early 2020.

Regional and Local Benefits

- US-26 Ross Island Bridge/I-405 circulation simplified
- I-5 northbound to US-26 eastbound regional circulation removed from neighborhood



The History

- Addresses past harms to inform a vision of a more healthy, connected and inclusive community
- Decades of previous plans and once-in-a-lifetime opportunity to get it right



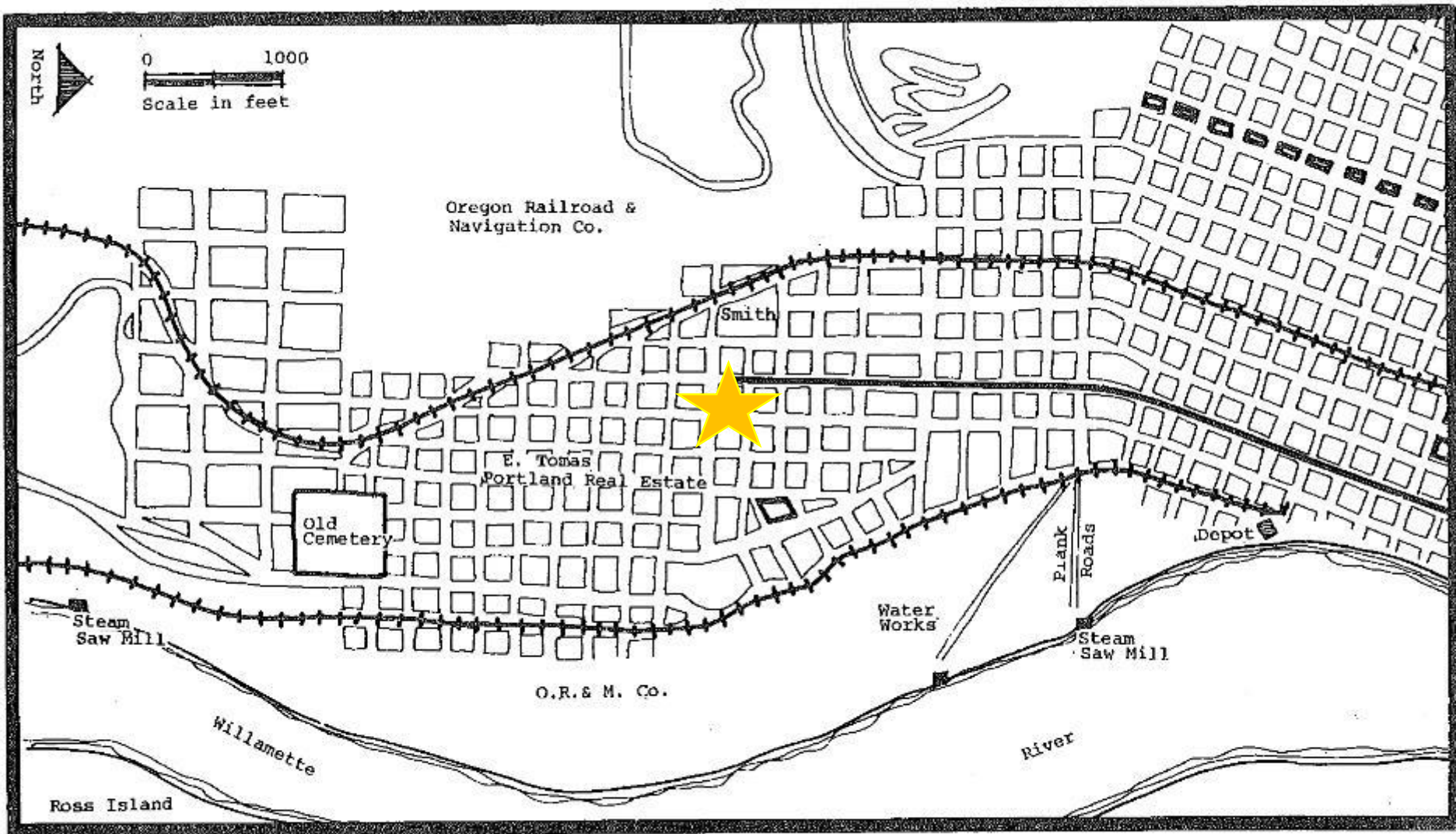


Figure 4; South Portland ca. 1886.

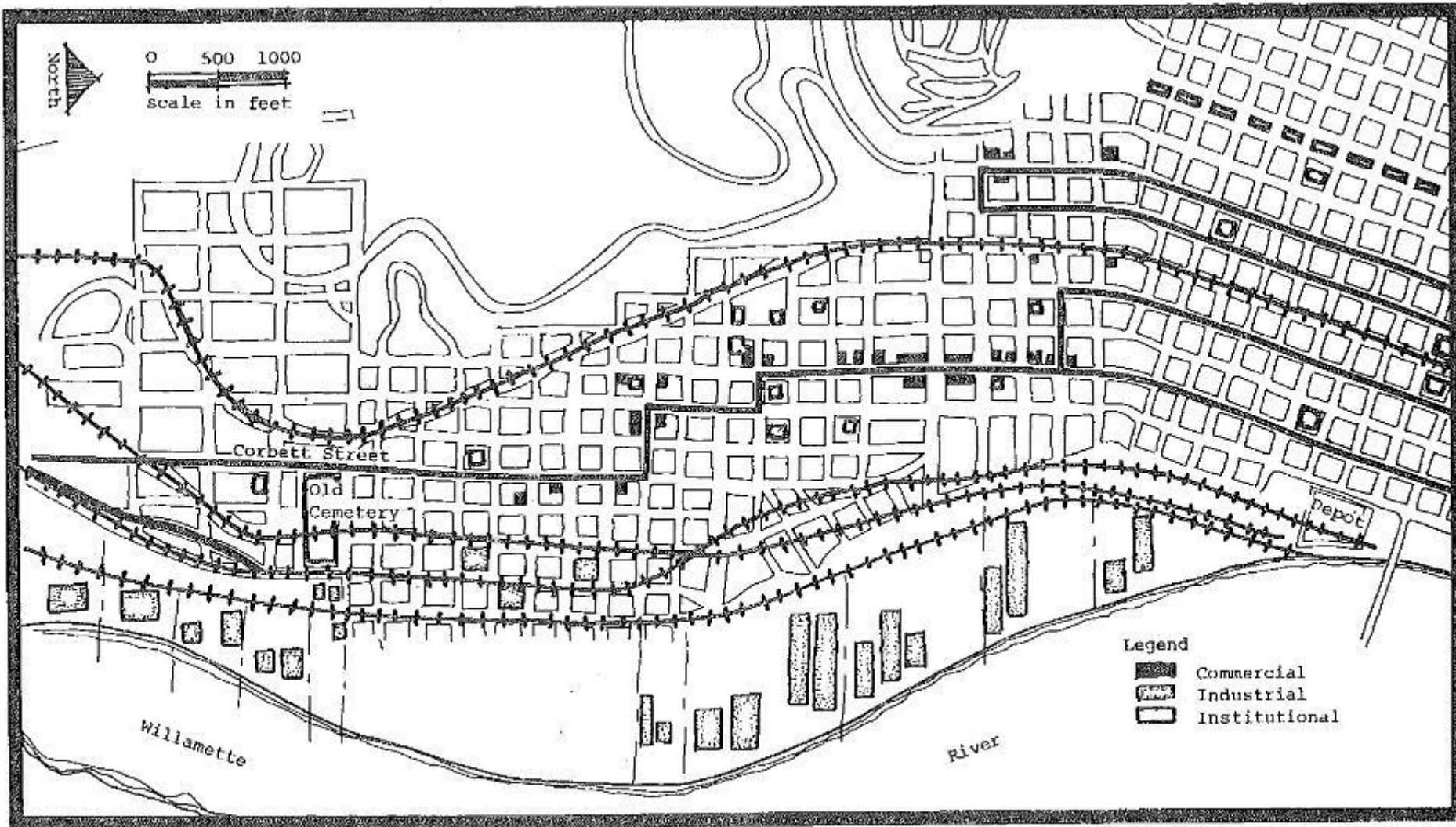


Figure 5; South Portland Land Use, ca. 1910-1923.

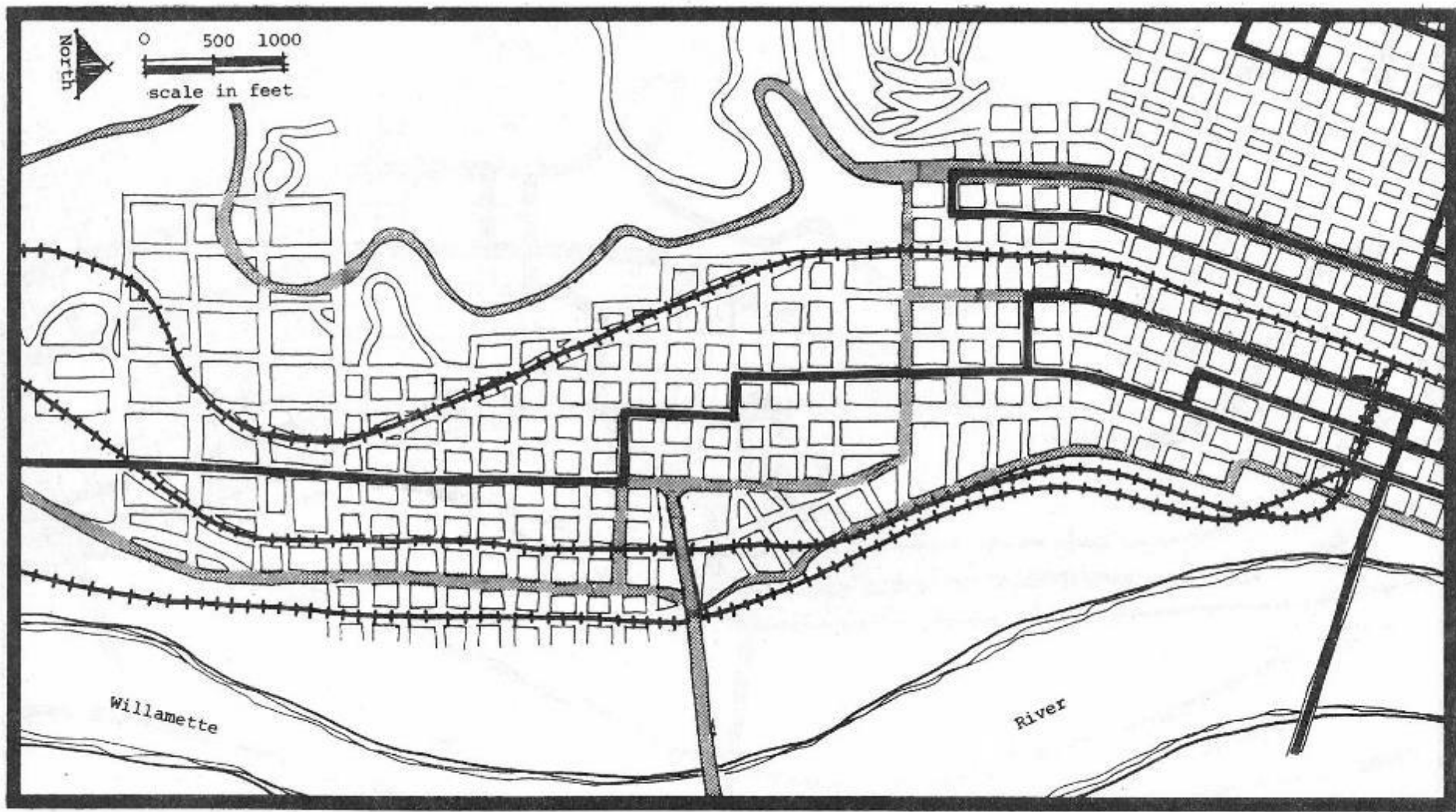


Figure 6; South Portland, ca. 1927.

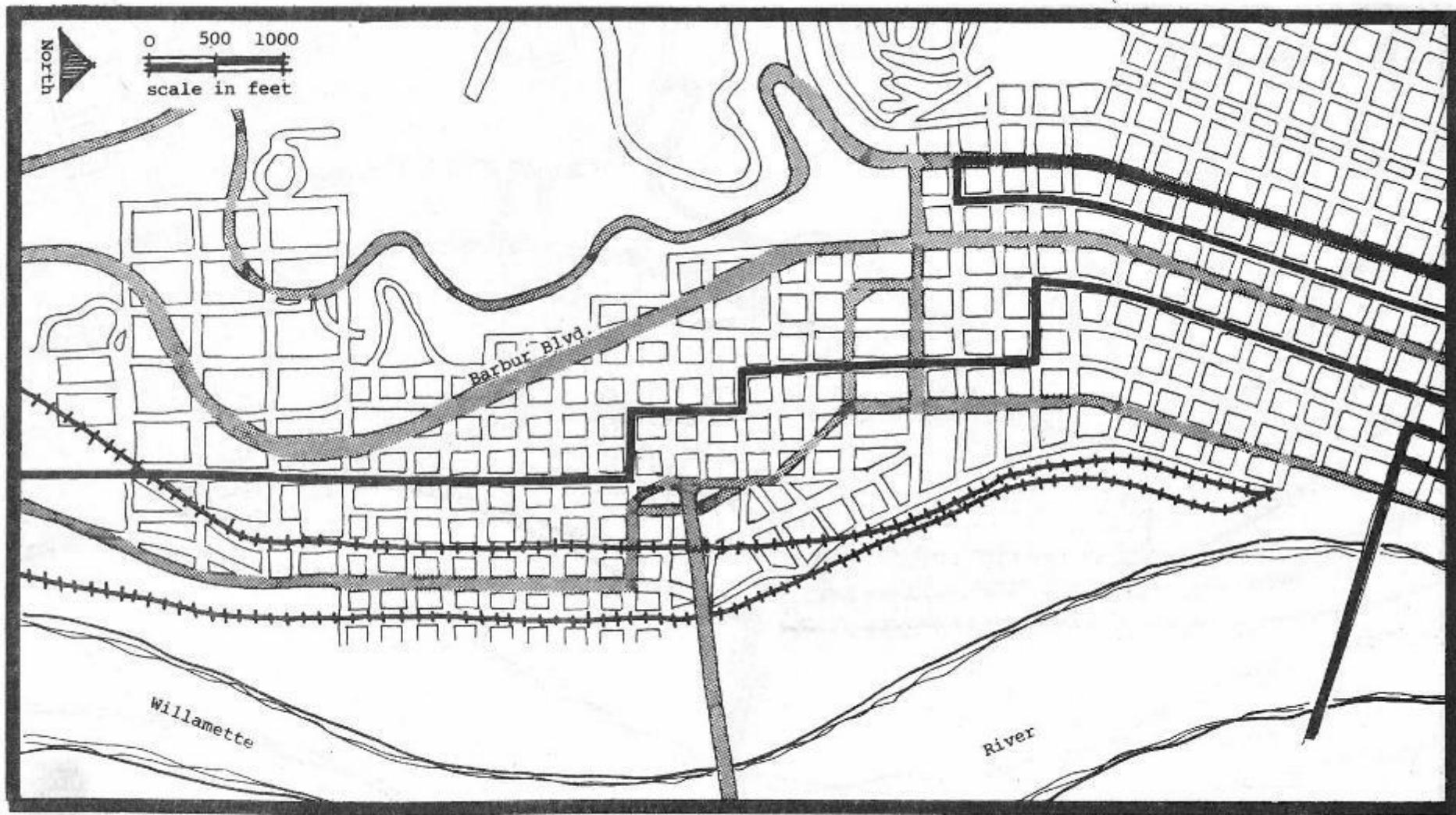


Figure 7; South Portland, ca. 1935

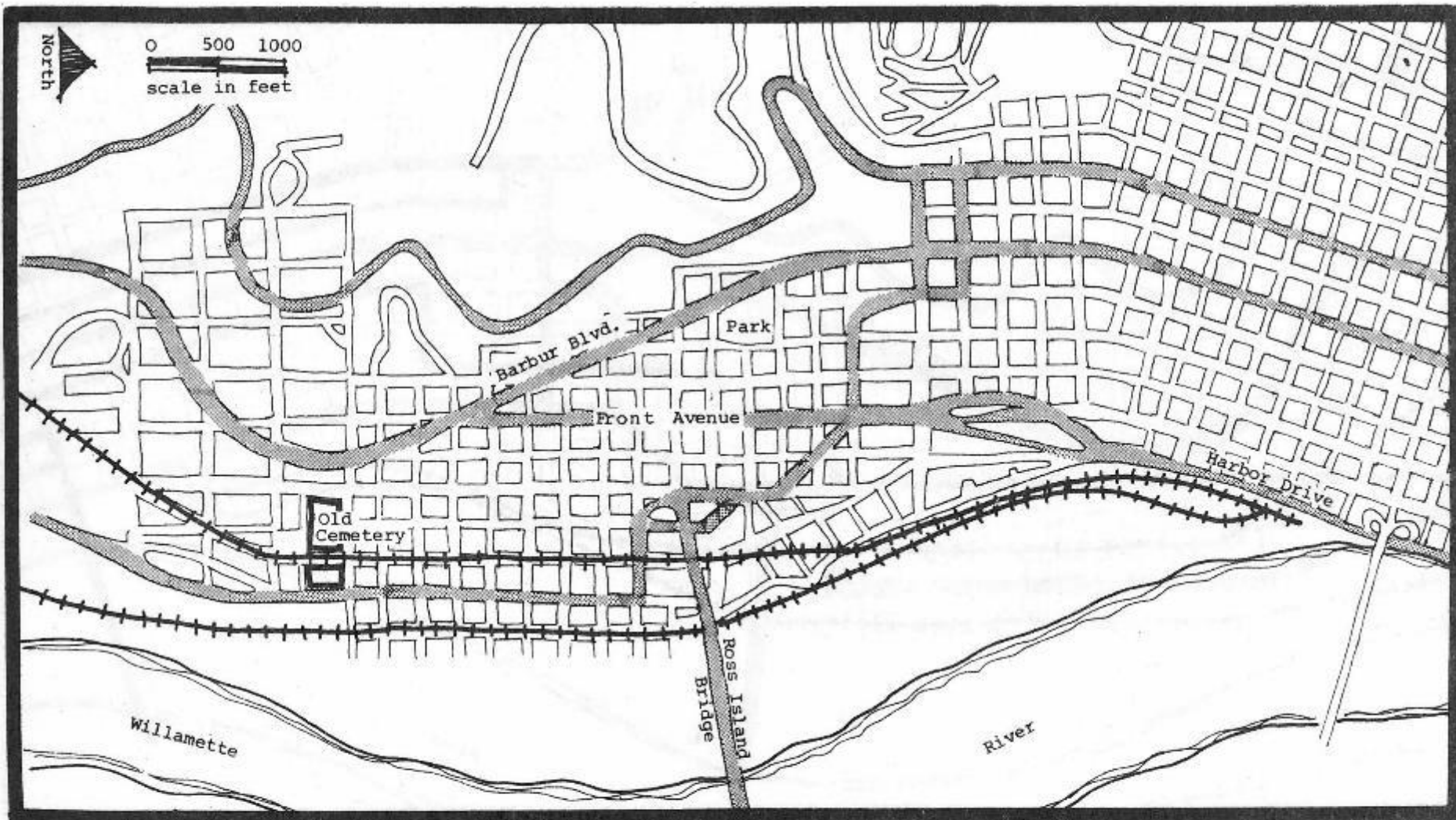


Figure 8; South Portland, ca. 1942.

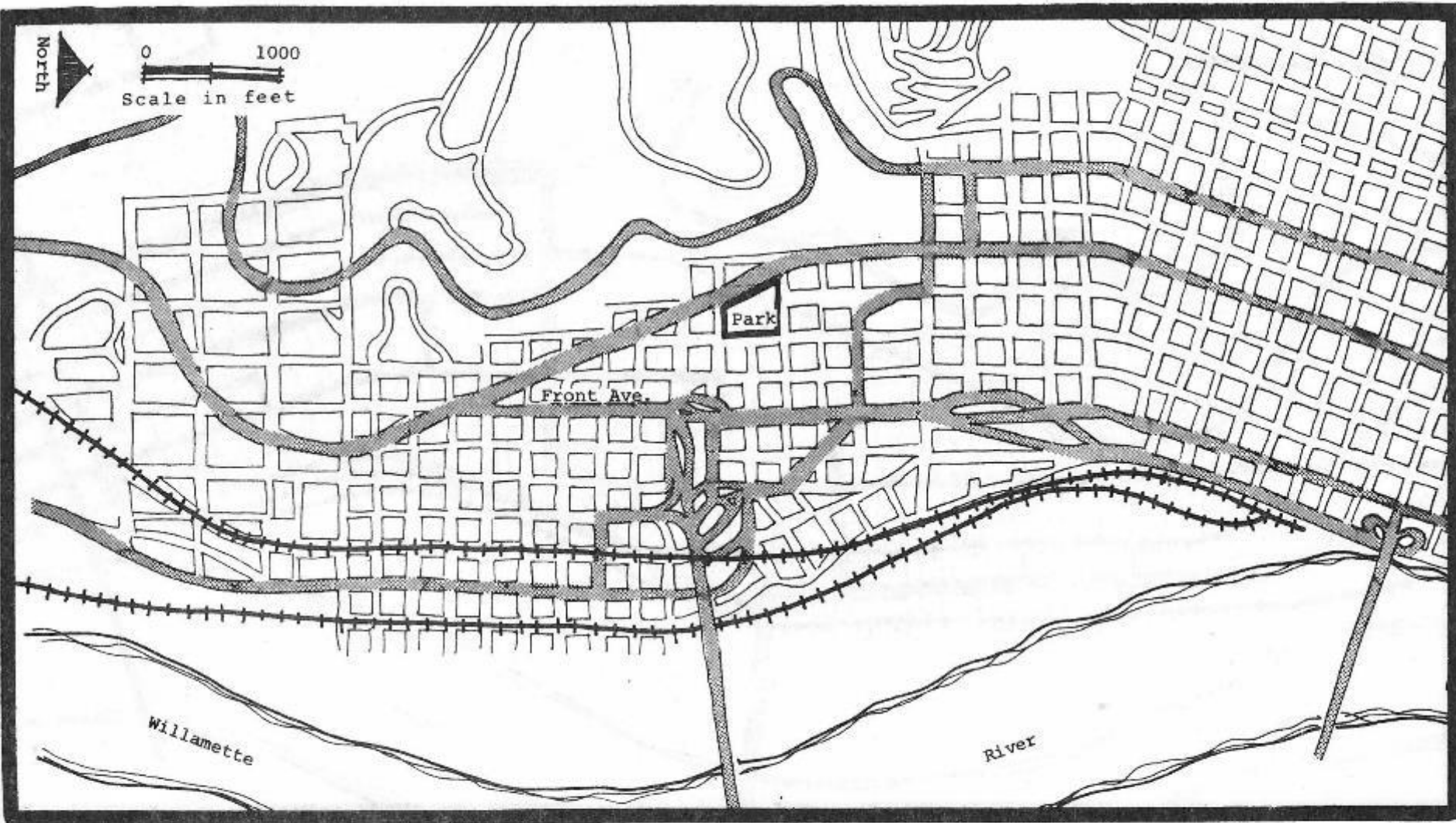


Figure 9; South Portland, ca. 1950.

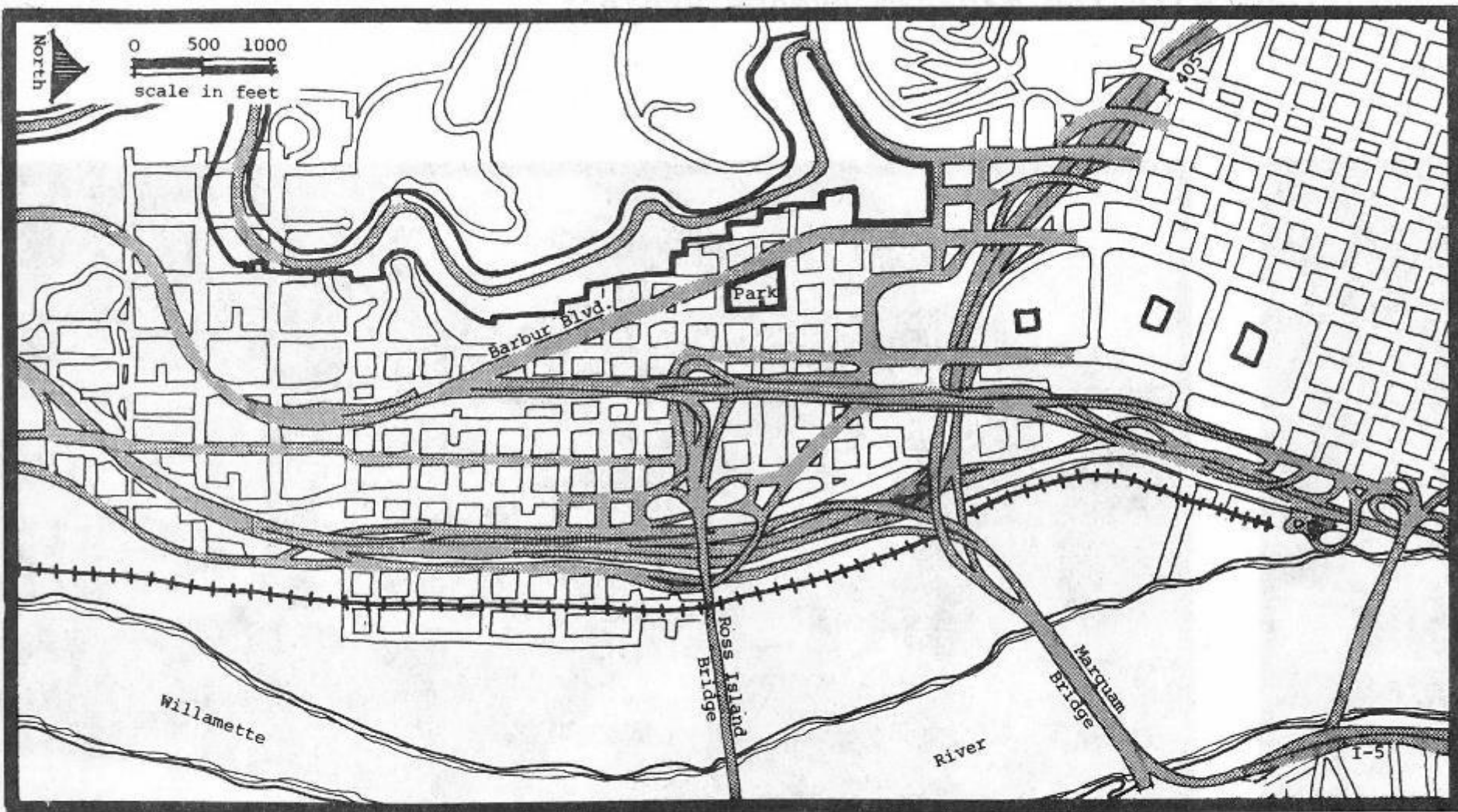
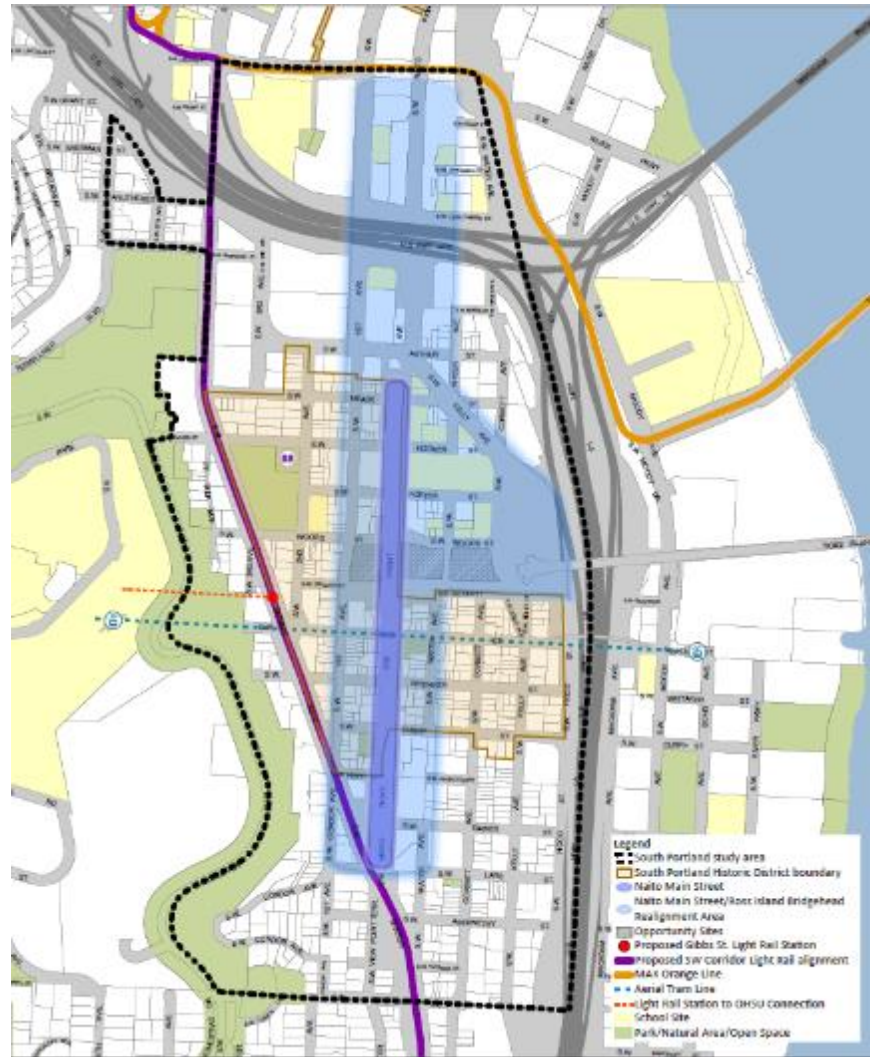


Figure 10; South Portland, ca. 1970.

South Portland Projects

This project fits in with the other projects taking place in this area:

- Historic district guidelines are being updated
- SW Corridor Project's proposed light rail (MAX) line/station on Barbur Blvd and connection to OHSU



Ross Island Bridgehead Street Design



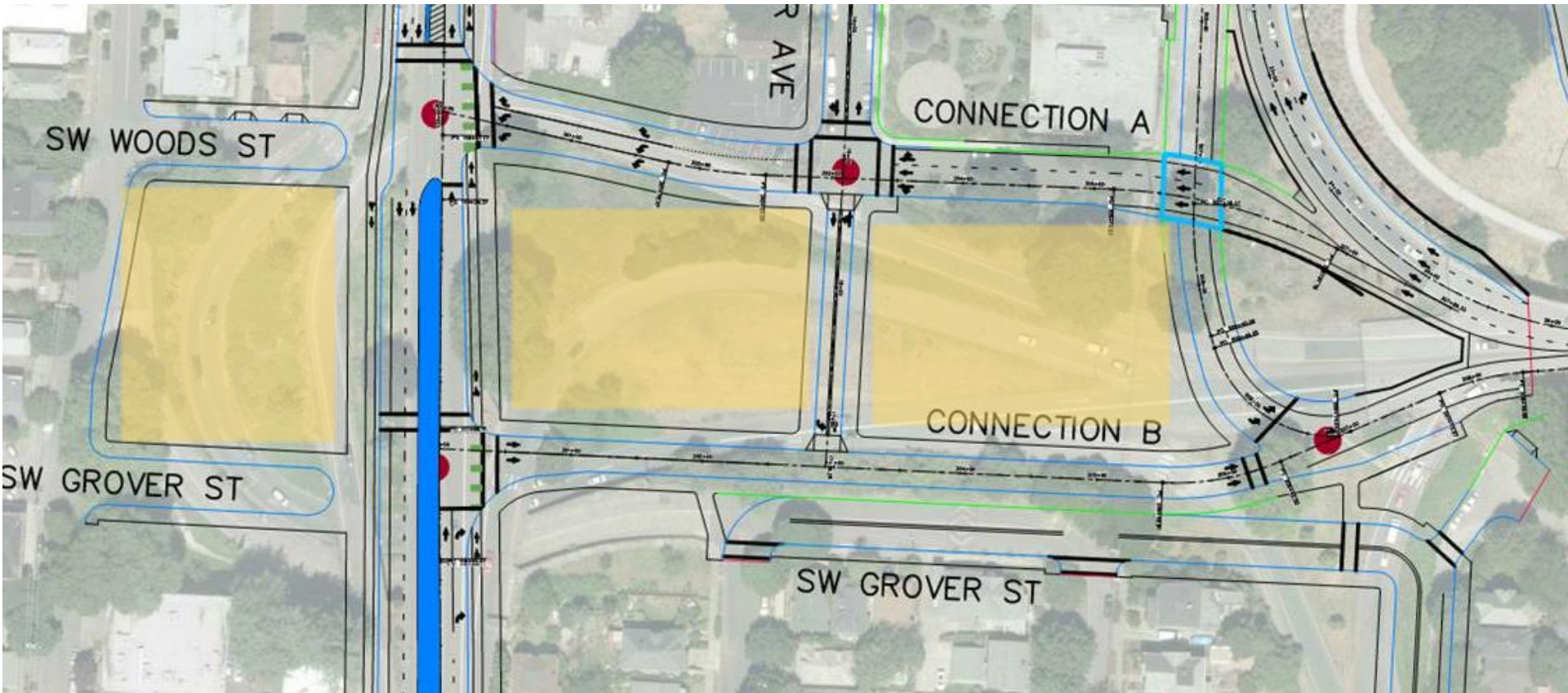
Ross Island Bridgehead/Naito Parkway Main Street Project | 11.20.19

These properties can provide needed housing and meet other community needs.



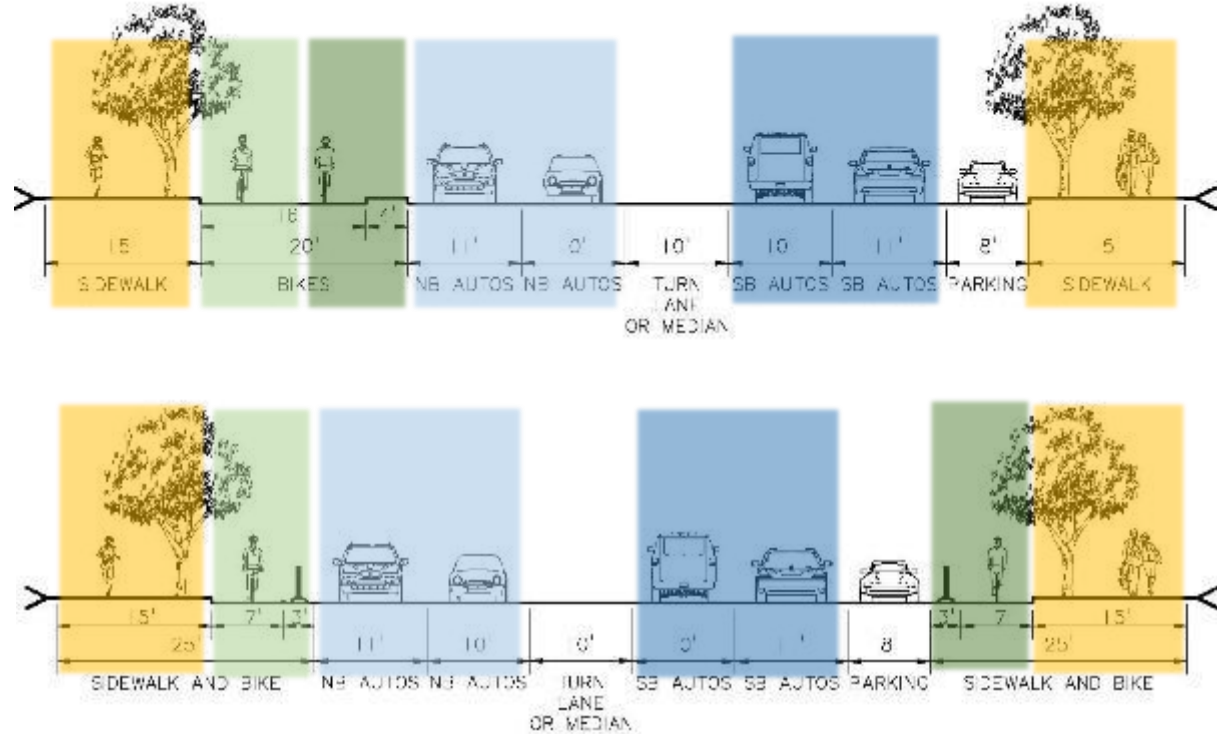
Ross Island Bridgehead: 3+ publicly owned acres of development opportunities

These properties can provide needed housing and meet other community needs.



Ross Island Bridgehead: Connections with Naito Parkway

- A Main Street for the neighborhood
- Opportunity for new neighborhood development projects



Questions and Next Steps

- Please talk with staff
- We'll connect with key property owners - let us know if you'd like to be contacted!
- Your input will go to the technical team
- In Jan/Feb to have a work session with you to develop draft designs of Naito Parkway
- In March we will meet again to review the DRAFT final design concepts



Any clarifying questions?

<https://www.portlandoregon.gov/transportation/80026>

Patrick Sweeney, Portland Bureau of Transportation, patrick.sweeney@portlandoregon.gov
Ryan Curren, Bureau of Planning and Sustainability, ryan.curren@portlandoregon.gov



Ross Island Bridgehead/Naito Parkway Main Street Project | 11.20.19