

Welcome! Please sign in

- Tonight you can:
 - Listen to a presentation at 6:00 and 7:00 pm
 - Talk with technical staff about the Ross Island Bridgehead and future Naito Parkway Main Street designs
 - Provide feedback on boards and the comment form

The City of Portland ensures meaningful access to city programs, services, and activities to comply with Civil Rights Title VI and ADA Title II laws and reasonably provides: translation, interpretation, modifications, accommodations, alternative formats, auxiliary aids and services. To request these services, contact 503-823-5185, City TTY 503-823-6868, Relay Service: 711.



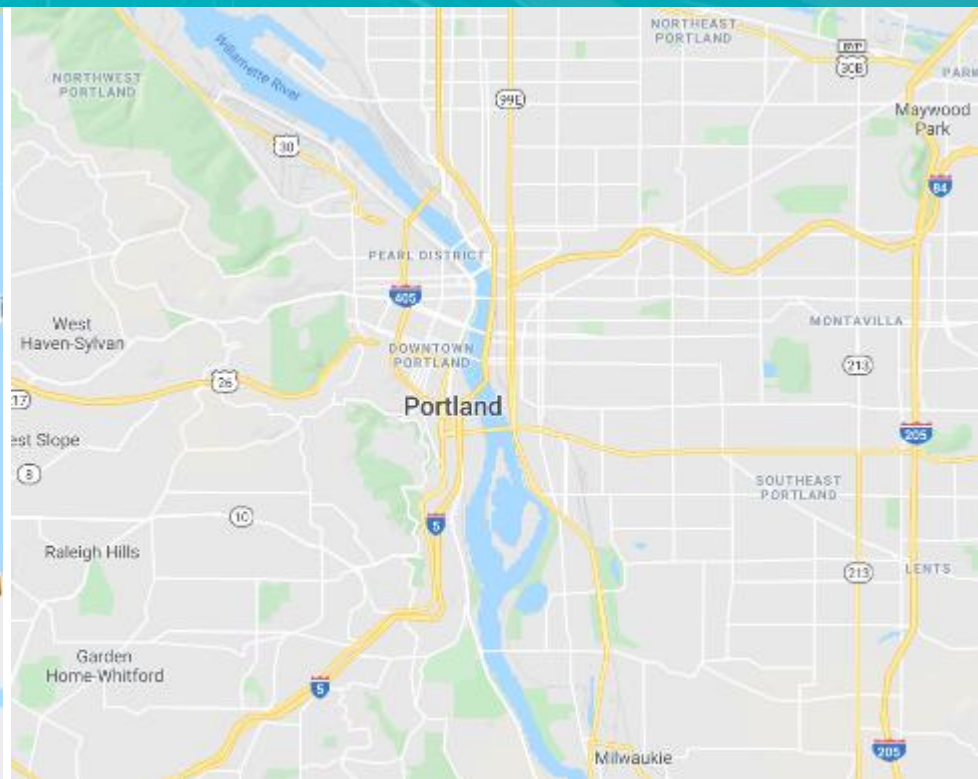
Bureau of Planning and Sustainability
Innovation. Collaboration. Practical Solutions.
City of Portland, Oregon



PBOT
PORTLAND BUREAU OF TRANSPORTATION

In coordination with our regional partners TriMet and Metro

Where do you live? Place a dot.



Other area of Portland:

Beaverton:

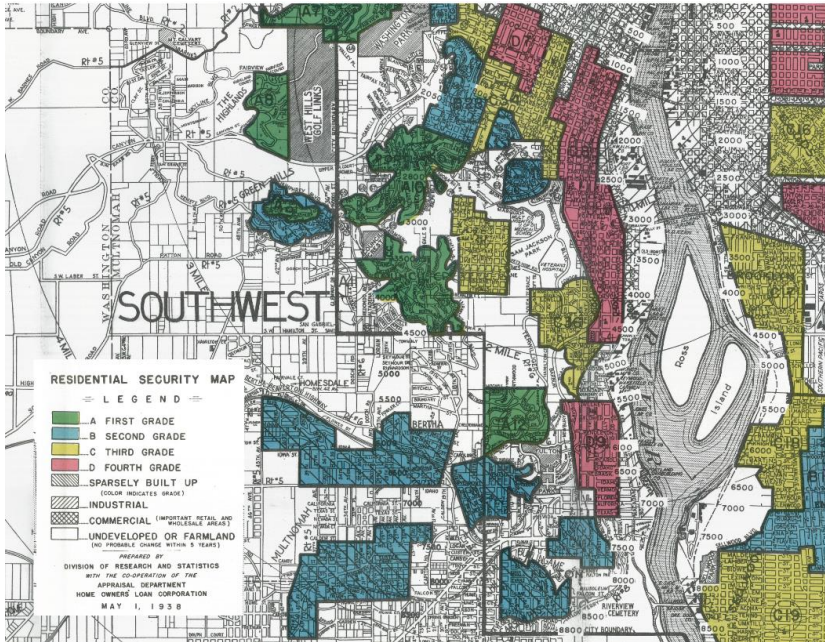
Other westside city:

Vancouver:

Other:

Historical context

Harmful impacts from past auto infrastructure projects, land use regulations, urban renewal, and real estate practices shaped the growth in South Portland for generations.



1938 HOLC Redlining Map



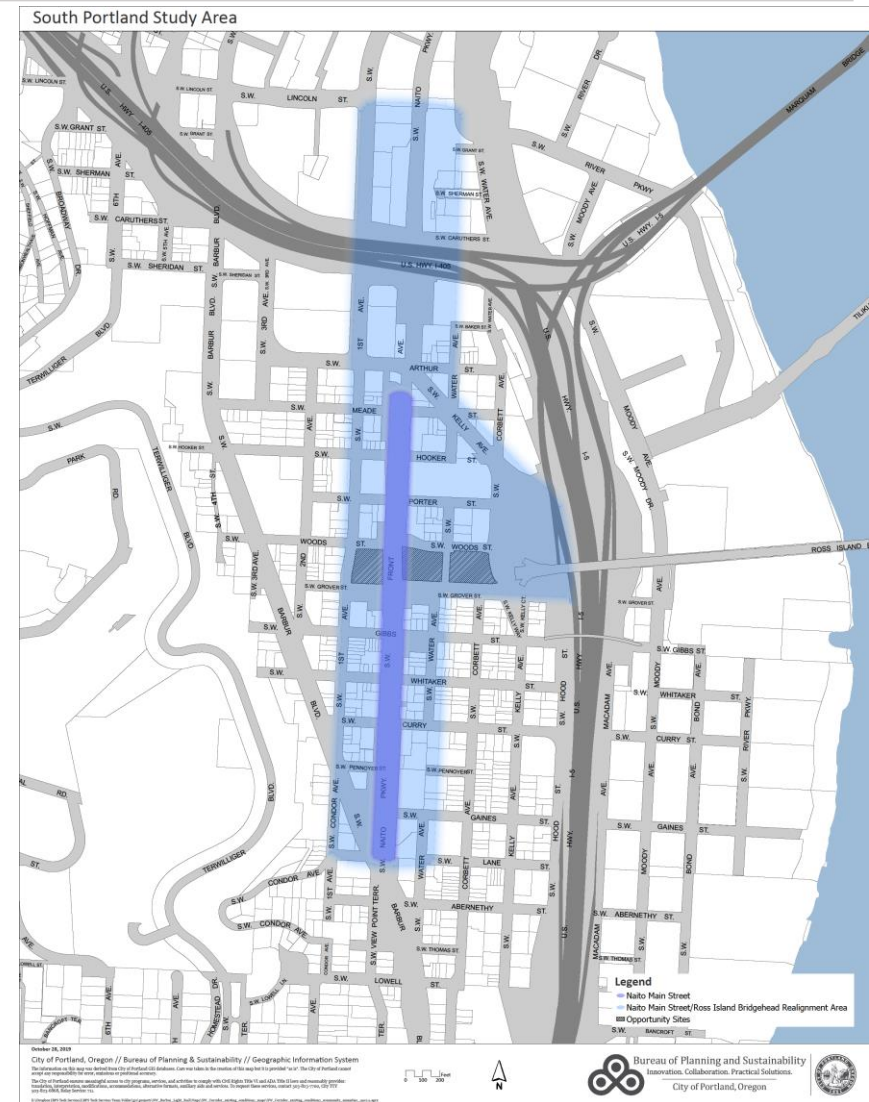
1932 Ross Island Bridgehead

The City is committed to ensure new transportation infrastructure, land use plans, and housing investments redress these past harms to low-income people and communities of color.

What is the Naito Main Street Project?

The Bureau of Planning and Sustainability (BPS) and the Portland Bureau of Transportation (PBOT) are working with the community to develop transportation and land use plans in South Portland.

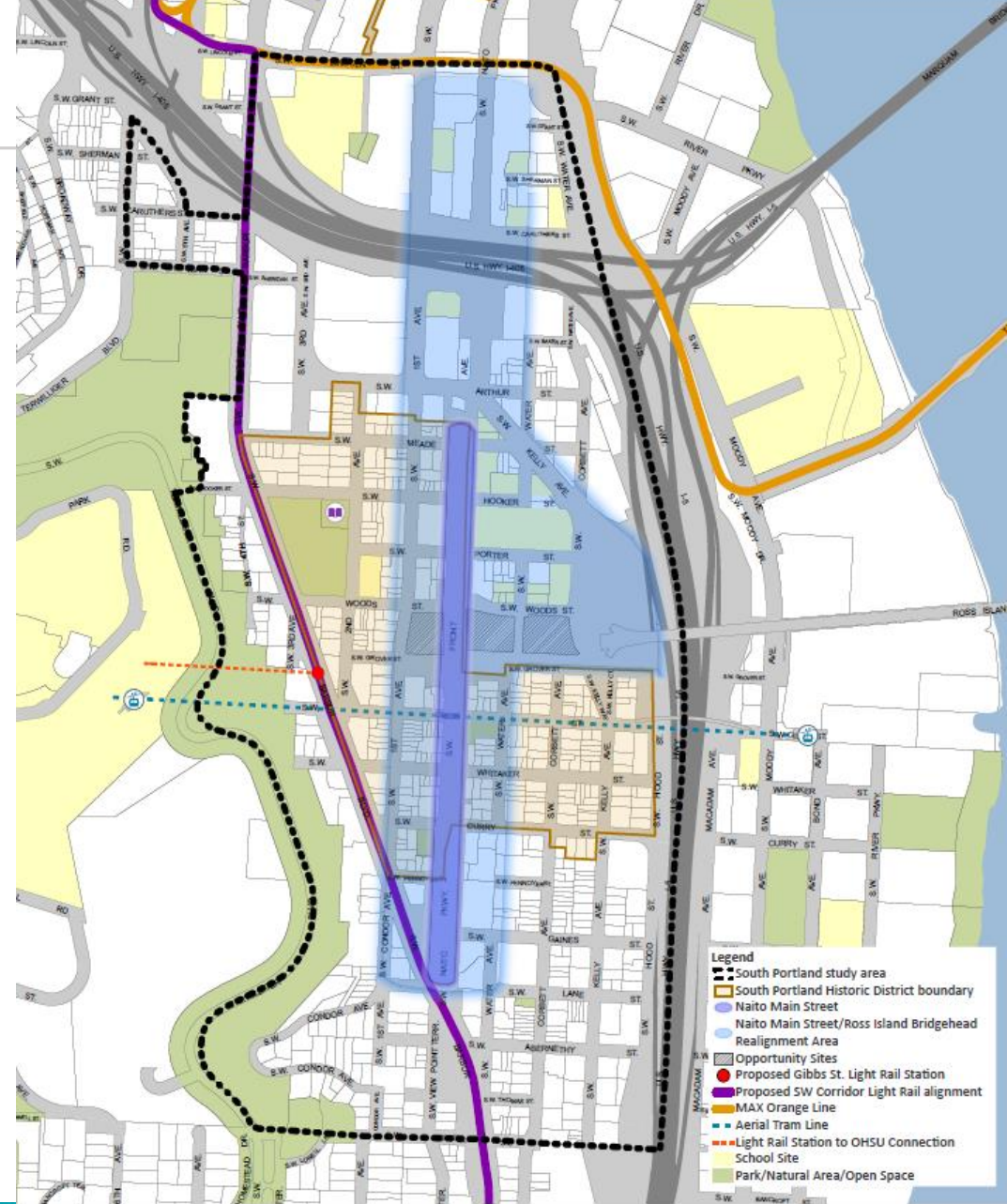
Reconfiguring the Ross Island Bridgehead is a once-in-a-lifetime opportunity to reconnect a divided neighborhood with changes to SW Naito Parkway and land uses that contribute to a healthy connected community while also supporting Portland's first historic district.



Other South Portland Projects

This project fits in with two other major planning projects taking place in this area:

- South Portland Historic District Guidelines are being updated
- SW Corridor proposed light rail (MAX) line/station on Barbur Blvd. and connection to OHSU



Community Needs - What we've heard

We've heard the community wants to:

- Create healthy, connected and inclusive communities
- Reconnect the neighborhood with safer streets, sidewalks, and bike lanes along Naito
- Create mixed-use/-income development that brings more commercial services, jobs, and housing options for people of all incomes and cultural backgrounds
- Plan for growth that supports the City's first historic district



“The community expressed a strong preference for prioritizing Naito as the spine of this area.” – Barbur Concept Plan 2012

Tell us what you think!

Now that you understand the history and existing land use/transportation system, tell us what you'd like to see in the future.

- **Use dots to help prioritize** problems and solutions (constraints/opportunities).
- **Write your ideas on post-it notes**
- **Talk to staff**
- **Draw your ideas on maps**
- **Fill out a comment card**

Your feedback will help the design team refine some solutions. We'll be back in early 2020 to share them with you and get your comments.



Current Constraints

Place a dot next to the top two (2) issues/constraints you want to see addressed.

Traffic cutting through the neighborhood

Lack of sidewalk and bike lane connections across Naito Parkway, across Ross Island Bridgehead ramps

Lack of local street connections across Naito Parkway, across Ross Island Bridgehead ramps

Barriers between neighborhood from infrastructure projects

Lack of affordable housing in the area

Lack of employment opportunities in the area

Lack of full service grocery and definable retail center

Past harms to the neighborhood from land use and transportation projects

Other?

Draw it on the map or talk to staff.

What transportation changes on Naito Parkway would improve your community?

Place a dot next to the most important opportunity for the area.

New bike lane and sidewalk connections to other neighborhoods

Increased safety/traffic calming/crosswalks

Less cut through traffic on local streets

More street trees, lights, benches, etc.

Other?

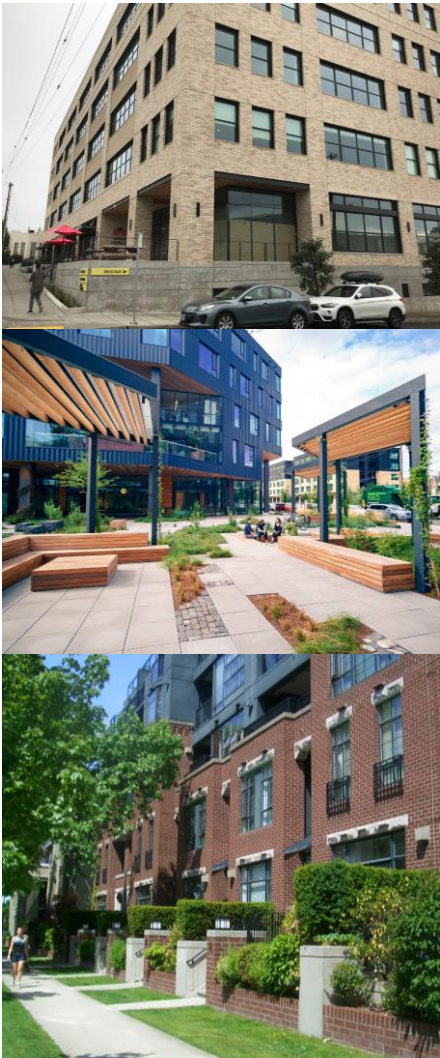
Draw on a map or talk to staff.

Different transportation ideas.



What land uses along Naito Parkway would make a healthier, connected community?

Different land use ideas



Place a dot next to the most important opportunity for the area.

Housing that serves a broad range of income levels and household sizes

More local businesses and commercial destinations

More community and cultural gathering places (such as a plaza, place of worship, event spaces, community rooms etc.)

Offices, hotels or other uses that can provide non-retail services and jobs

More public art

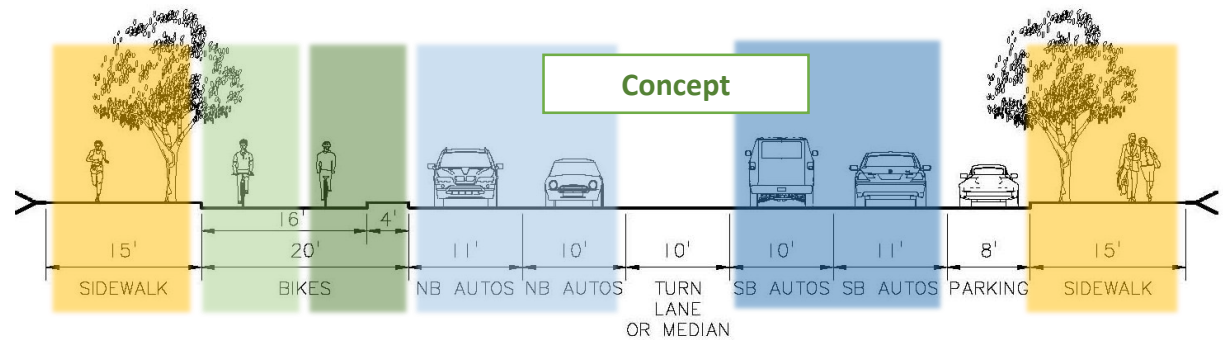
Other?

Write it on the board or talk to staff

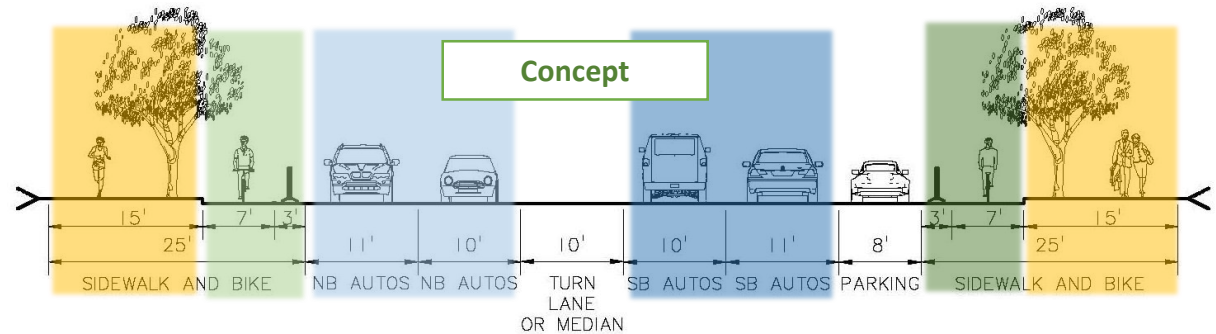
Moving from a Highway to Multi-Modal Main Street - How can Naito serve all users?

Add post-it notes with your ideas to the two concepts.

**Naito Parkway
Bi-Directional Bike Lane Concept**



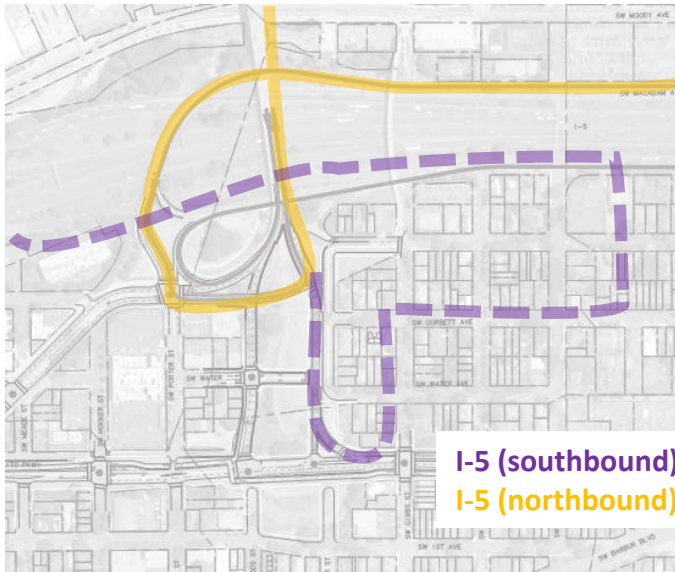
**Naito Parkway
Directional Bike Lane Concept**



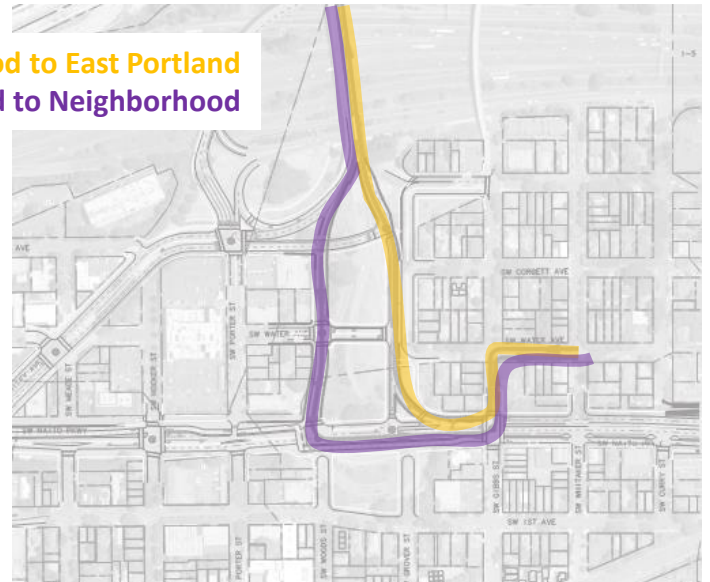
Access to and from Ross Island Bridge



Naito Parkway (southbound) to East Portland
East Portland to I-5 (southbound)



I-5 (southbound) to East Portland
I-5 (northbound) to East Portland



Neighborhood to East Portland
East Portland to Neighborhood

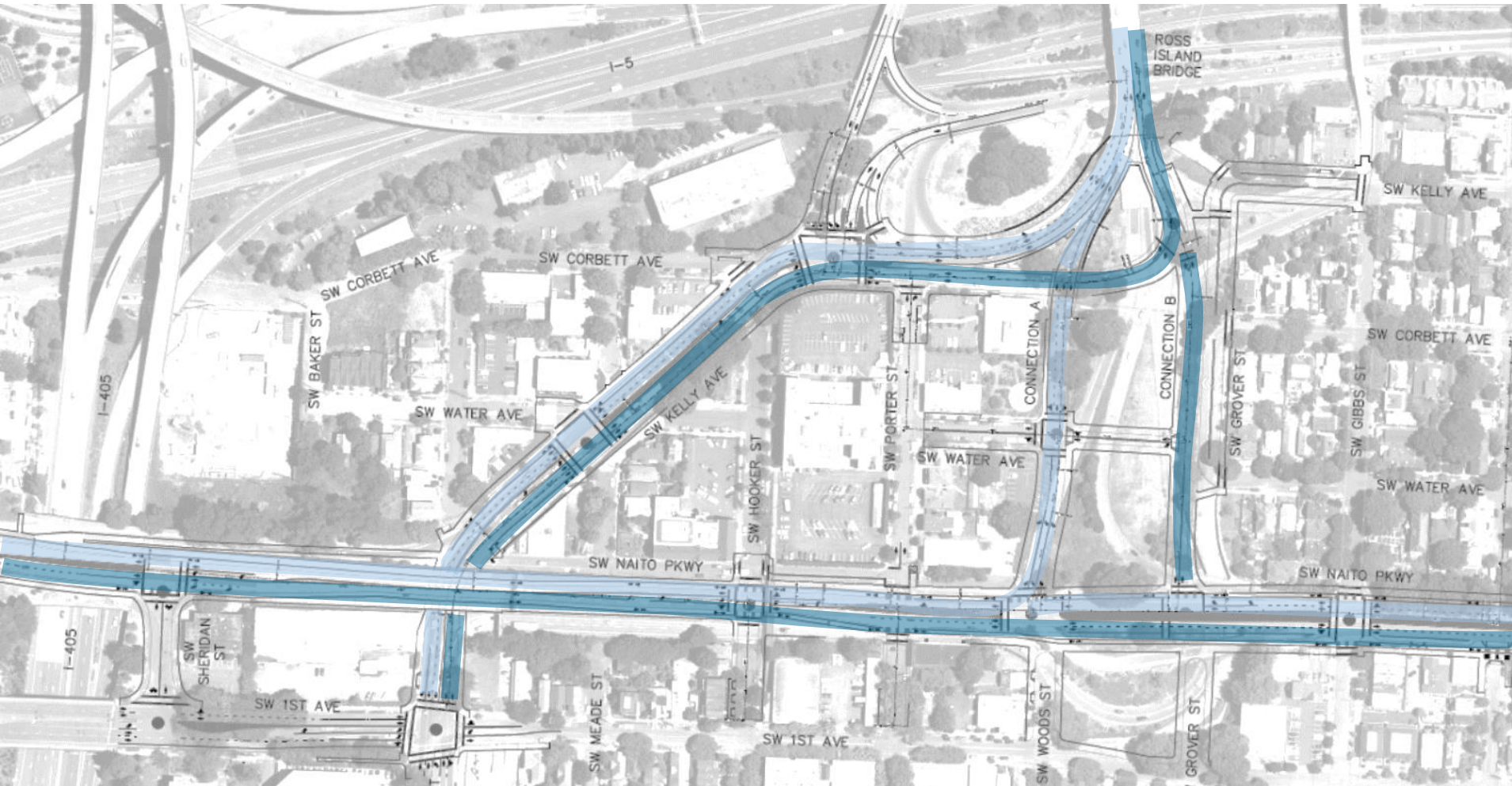
Ross Island Bridgehead: Moving from highway ramps to local, interconnected streets

What thoughts do you have about the Ross Island Bridgehead street design?

Add post-it notes with your ideas.

Northbound/
Westbound

Southbound/
Eastbound



Ross Island Bridgehead: 3+ publicly owned acres of development opportunities

These properties can provide needed housing and meet other community needs.

What new uses can you imagine on these properties?

Add post-it notes with your ideas.

