

# NE 148<sup>th</sup> Safety Project

*Summerplace HOA*

*May 19, 2021*

*Liz Rickles, Project Manager*

*Clay Veka, Vision Zero Program Coordinator*

*Matthew Machado, Sr. Engineering Associate, Traffic*

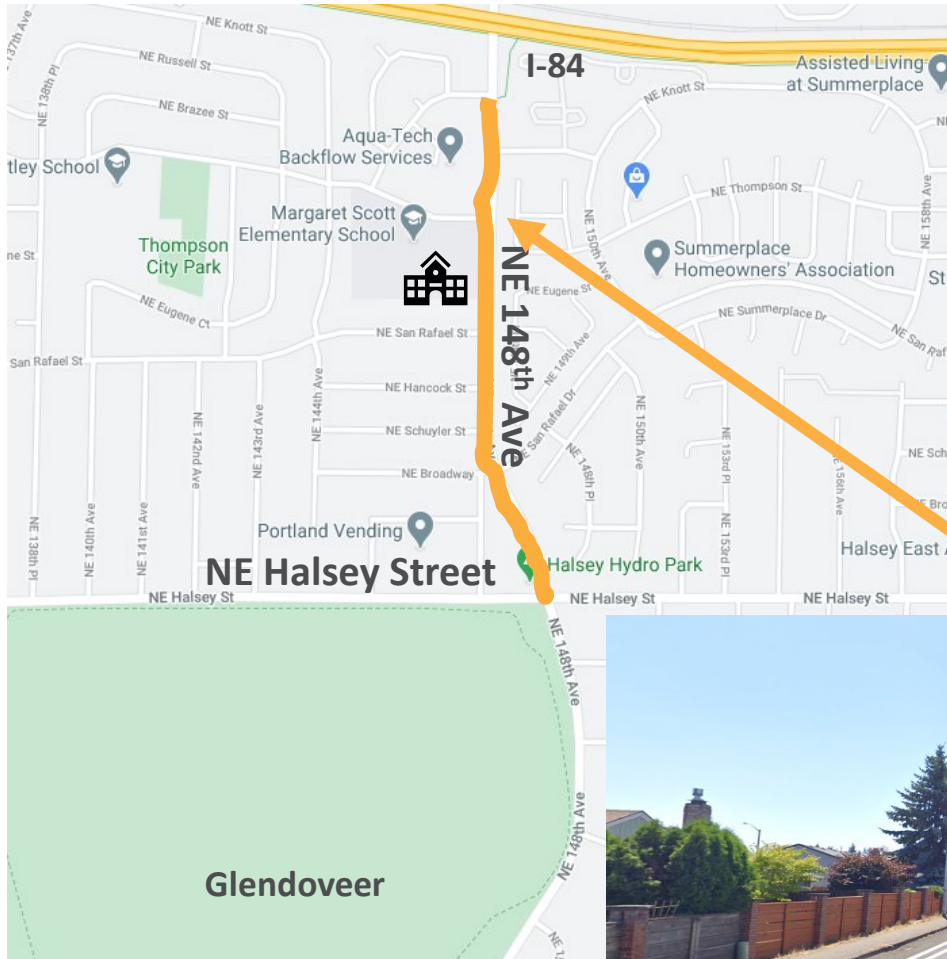


[www.fixingourstreets.com](http://www.fixingourstreets.com)



**PBOT**  
PORTLAND BUREAU OF TRANSPORTATION

# NE 148<sup>th</sup> Safety Project: *now in planning*

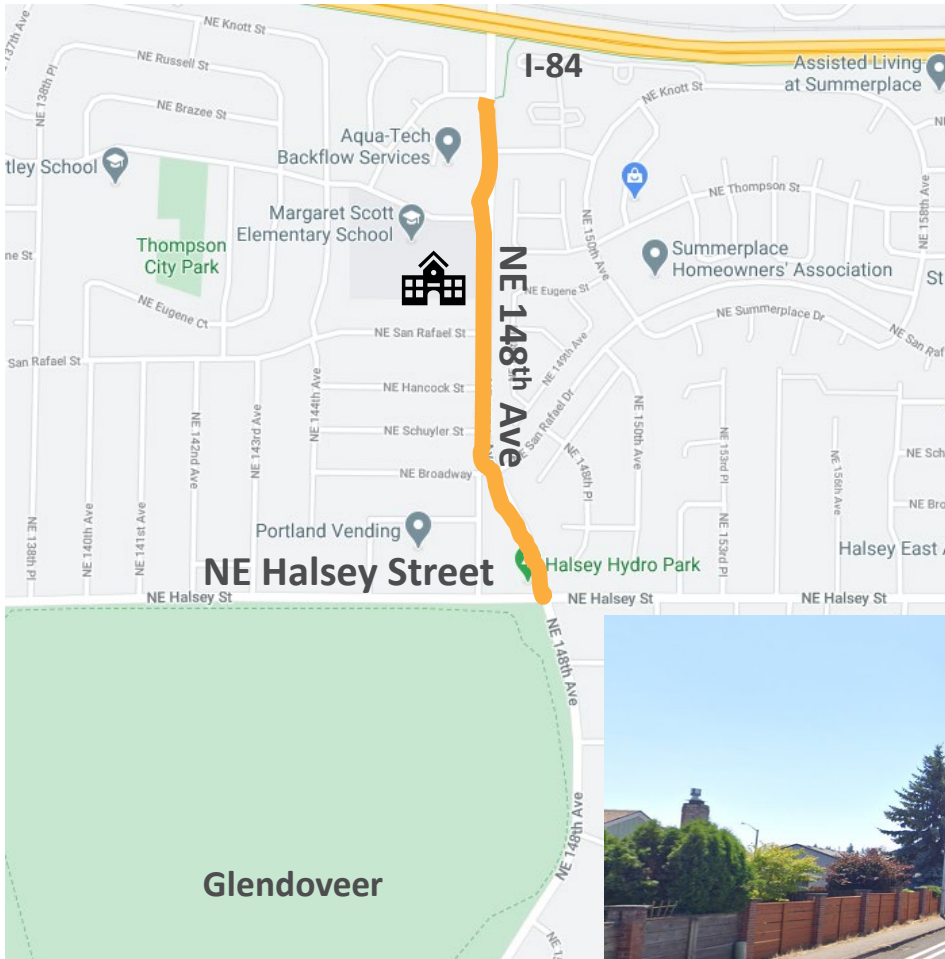


**2019 traffic volume counts**  
Under 13,000 cars/day total  
700 cars peak hour south bound  
500 cars peak hour north bound



NE 148<sup>th</sup> looking south to  
NE Sacramento

# NE 148<sup>th</sup> Safety Project: *now in planning*

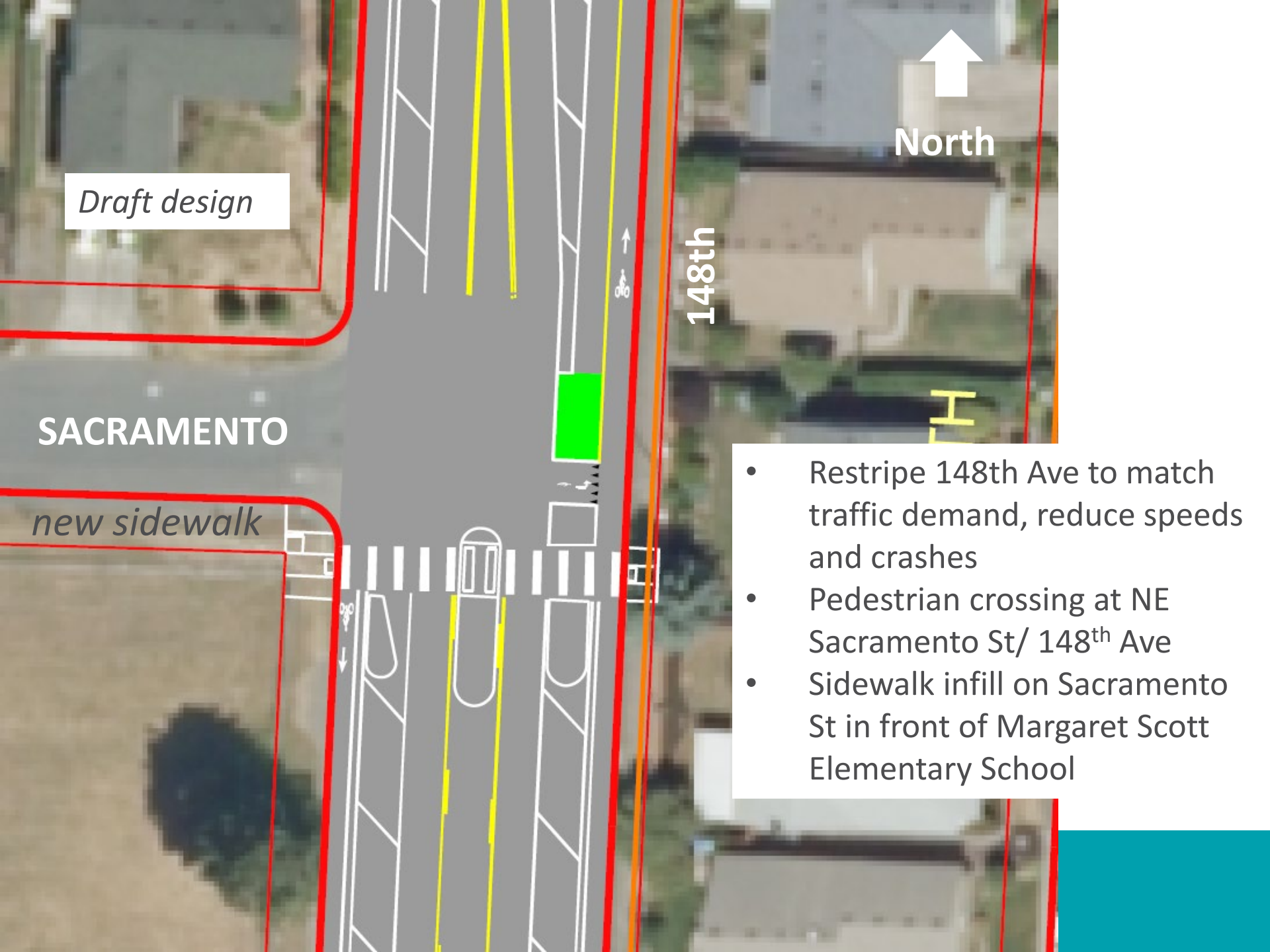


## Challenges

- **86-93%** of cars are driving over 35M MPH
- **38-19%** of cars speeding over 45 MPH – almost 4,000 cars a day
- No safe places to cross the street in project area



NE 148<sup>th</sup> looking south to  
NE Sacramento



*Draft design*

**SACRAMENTO**

*new sidewalk*

148th

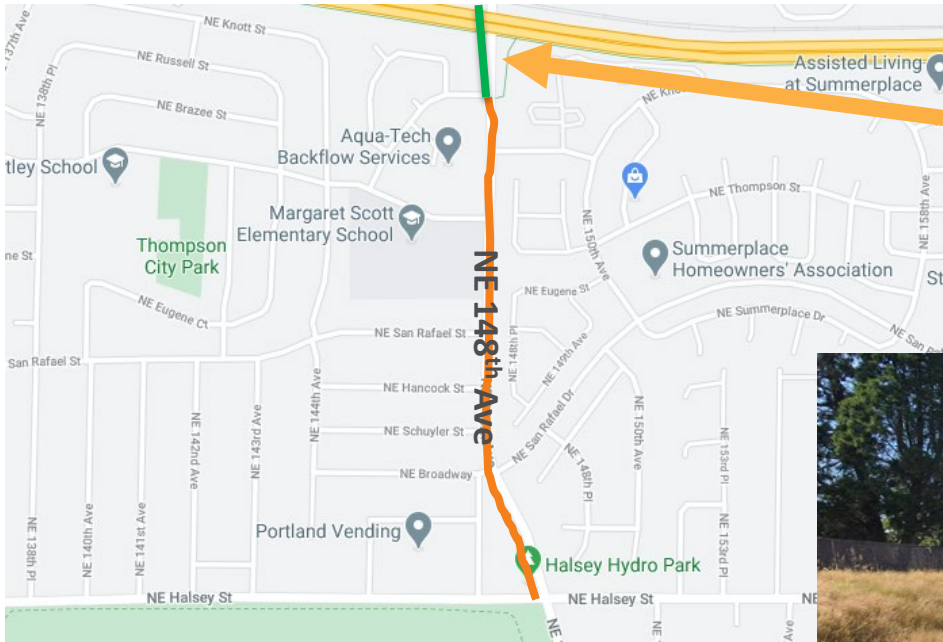
North



- Restripe 148th Ave to match traffic demand, reduce speeds and crashes
- Pedestrian crossing at NE Sacramento St/ 148<sup>th</sup> Ave
- Sidewalk infill on Sacramento St in front of Margaret Scott Elementary School



# NE 148<sup>th</sup> Safety Project: NE 146<sup>th</sup> Drive to NE Halsey



*Example crossing – SW Capitol Highway at Dickinson close up  
SW Capitol Highway has slightly higher vehicle volumes than NE 148th*



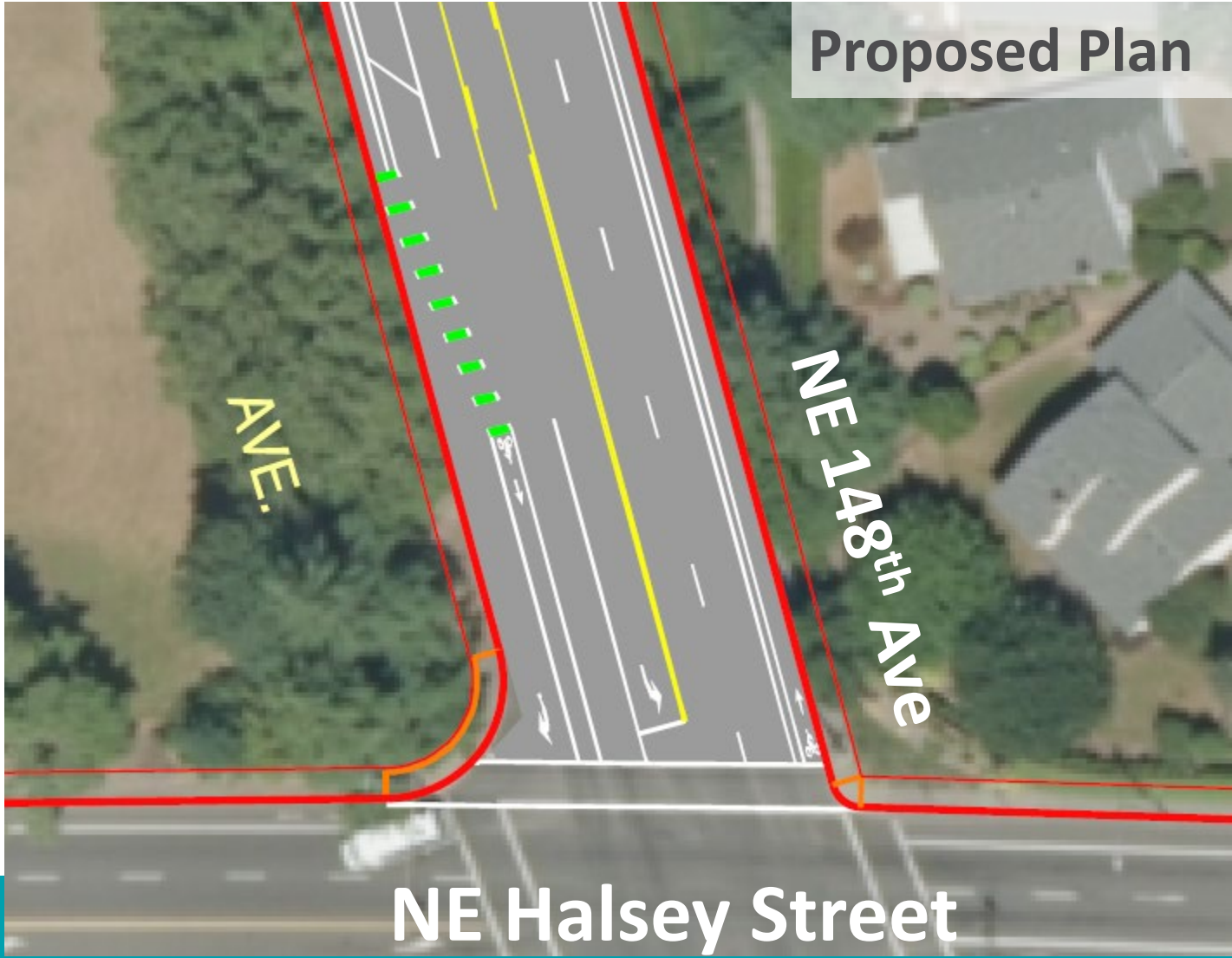
*Example crossing – SW Capitol Highway at Coronado approaching crossing*



# Future Project: Knott-Sacramento Neighborhood Greenway



- Planning begins in 2022
- An East-west greenway connecting the Parkrose Heights, Russell, and Wilkes neighborhoods
- First identified as priority in 2012 East Portland in Motion planning process
- Greenway route will use new crossing planned for 148<sup>th</sup> and Sacramento



Proposed Plan

ANE.

NE 148<sup>th</sup> Ave

NE Halsey Street

# NE 148<sup>th</sup> Safety Project: NE 146<sup>th</sup> Drive to NE Halsey



AVE. 148TH

Proposed Plan

Sacramento



NE 148<sup>th</sup> Safety Project:

**Questions we've received about the project**

**NE 148<sup>th</sup> Safety Project:**

**Questions and time to listen**

**Liz Rickles**

**[Elisabeth.rickles@portlandoregon.gov](mailto:Elisabeth.rickles@portlandoregon.gov)**

# Outer Halsey Safety Project

- Will complete all **sidewalk** on north side of Halsey between NE 122nd & 162nd Aves, most of south side
- Will construct 2 new **signalized pedestrian crossings** with lighting at NE 119th and NE 128th
- No change in number of car travel lanes

