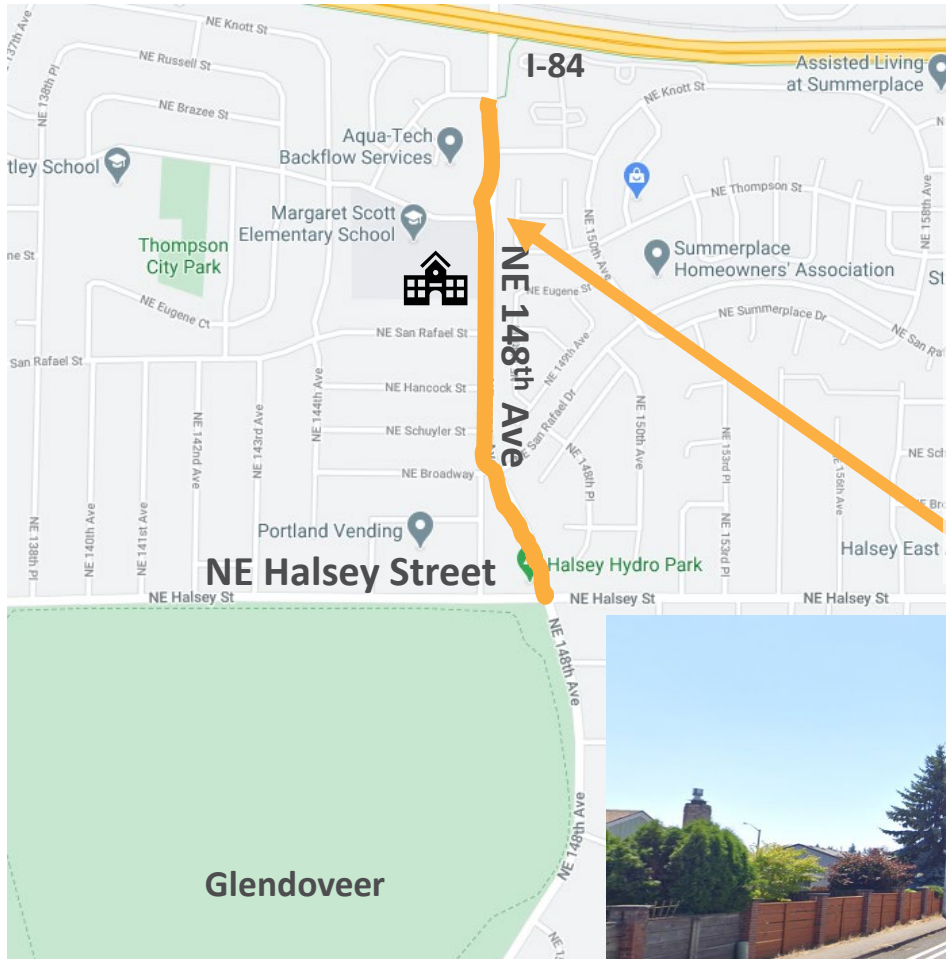


# NE 148<sup>th</sup> Safety Project: *now in planning*



## Challenges

- 86-93% of cars driving over 35 mph! (that's over 5,500 cars a day)
- No safe places to cross the street



NE 148<sup>th</sup> looking south to  
NE Sacramento

# NE 148<sup>th</sup> Safety Project



**Proposed  
Plan**

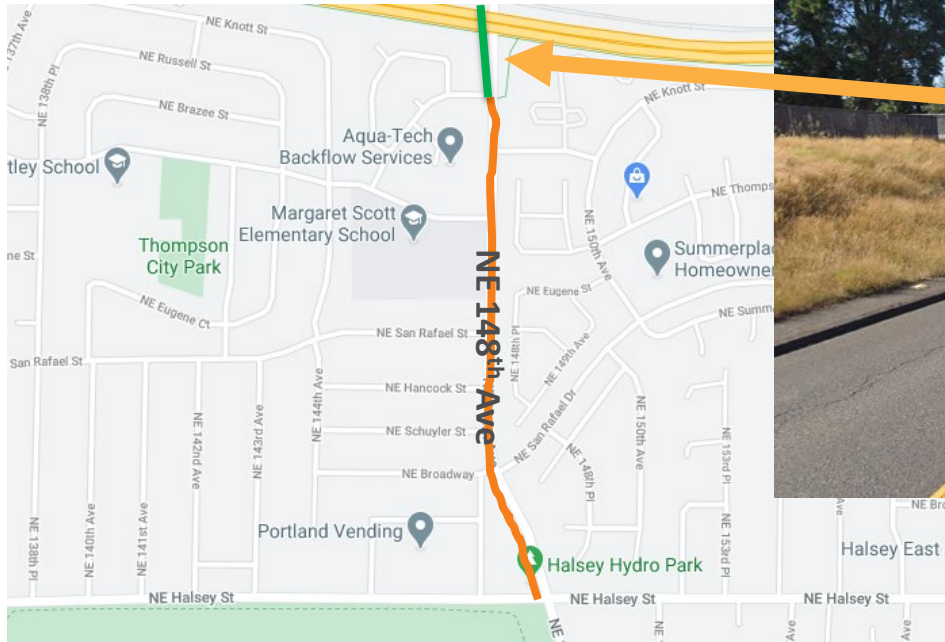
**Margaret Scott  
Elementary School**

**NE Sacramento St.**

- Restripe 148th Ave to match traffic demand, reduce speeds and crashes.
- Pedestrian crossing at NE Sacramento St/ 148<sup>th</sup> Ave
- Sidewalk infill on Sacramento St in front of Margaret Scott Elementary School

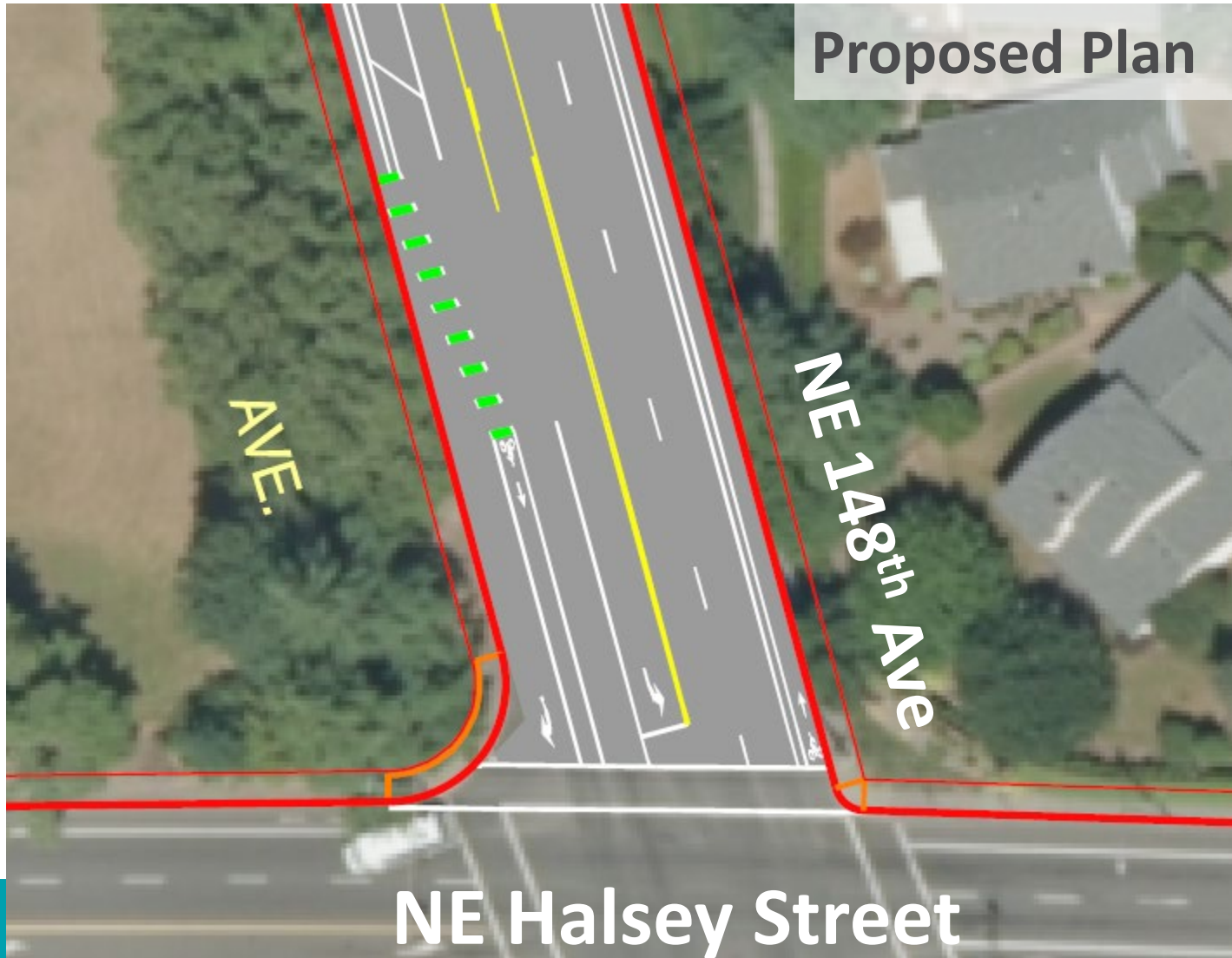


# NE 148<sup>th</sup> Safety Project: NE 146<sup>th</sup> Drive to NE Halsey

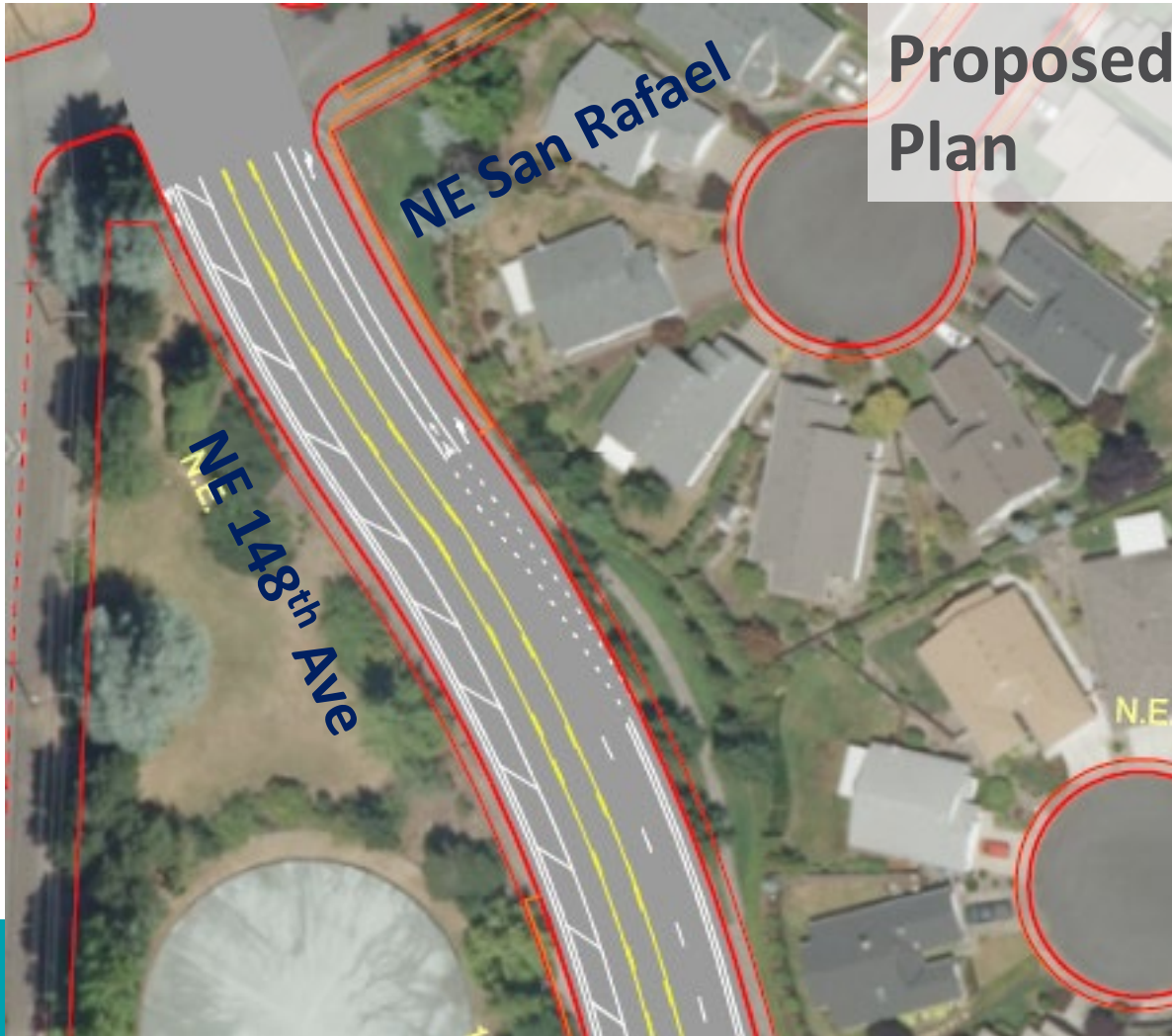


- Restriping of 148th to match traffic demand, reduce speeds & crashes

# NE 148<sup>th</sup> Safety Project:



# NE 148<sup>th</sup> Safety Project: NE 146<sup>th</sup> Drive to NE Halsey





# Future Project: Knott-Sacramento Neighborhood Greenway



- Planning begins in 2022
- An East-west greenway connecting the Parkrose Heights, Russell, and Wilkes neighborhoods
- First identified as priority in 2012 East Portland in Motion planning process
- Greenway route will use new crossing planned for 148<sup>th</sup> and Sacramento