

# Pre-project vehicle volume and speed data

## Northwest Johnson and Marshall Neighborhood Greenway

KEY

Oct 2020

23 MPH, 701

22 MPH, 754

Data collection month

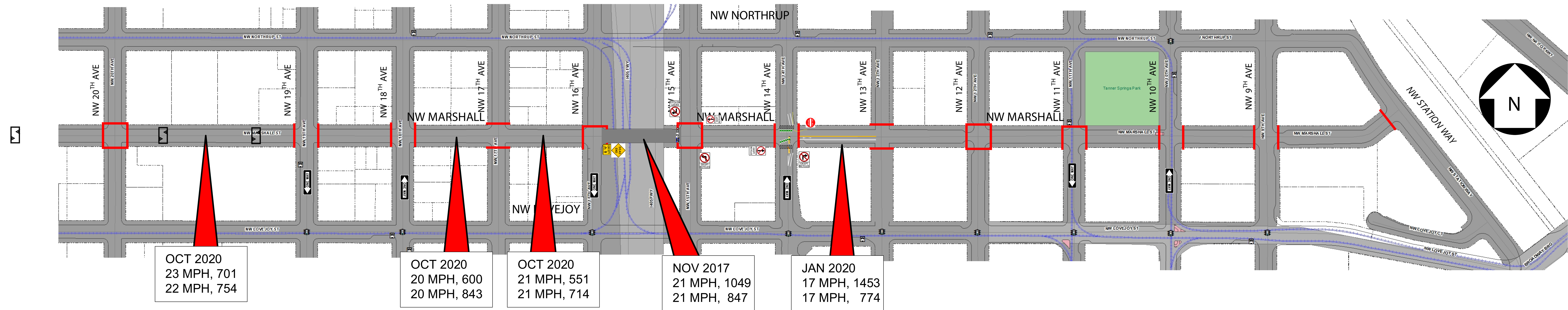
Eastbound 85th percentile speed, daily car volume

Westbound 85th percentile speed, daily car volume

Requested Data

Controlled stop

### NW MARSHALL GREENWAY



Nearby Greenways should be designed, built and maintained for an average of 1,000 cars per day and vehicle speeds of 20 MPH.

### NW JOHNSON GREENWAY

