

Flanders Crossing Bridge Project Overview



- Critical pedestrian and bicycle connection between the Pearl and Northwest Districts
- \$6.4 million total project budget
- Construction start anticipated for late 2019 or early 2020

Flanders Crossing Bike/Ped Bridge

Other Project Elements

Reconfigure roadway to create two lanes for the offramp and one lane for NW 16th Ave

Install traffic Signal at the west end of the Flanders Bridge

Install a diverter at NW Flanders St. and 17th

Convert NW Flanders to one-way eastbound between 15th Ave and 14th Ave

Convert the left lane into a left turn only lane. Convert the middle lane to a left turn/thru lane

Realign the ramp to receive thru traffic from the right two lanes.

Install traffic signal at 14th Ave and Flanders

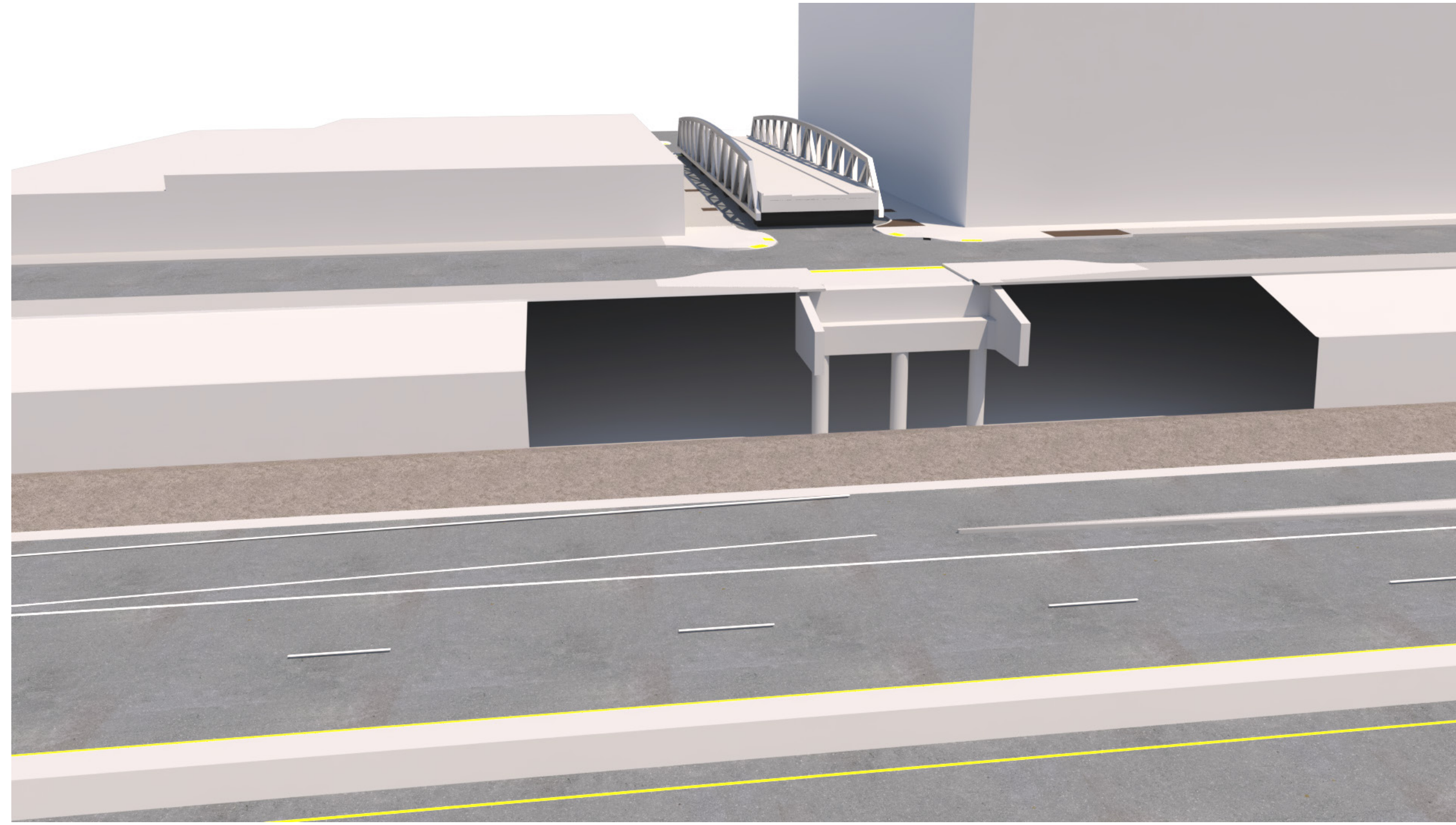


Nicole Peirce, Project Manager
nicole.peirce@portlandoregon.gov
503.823.6186

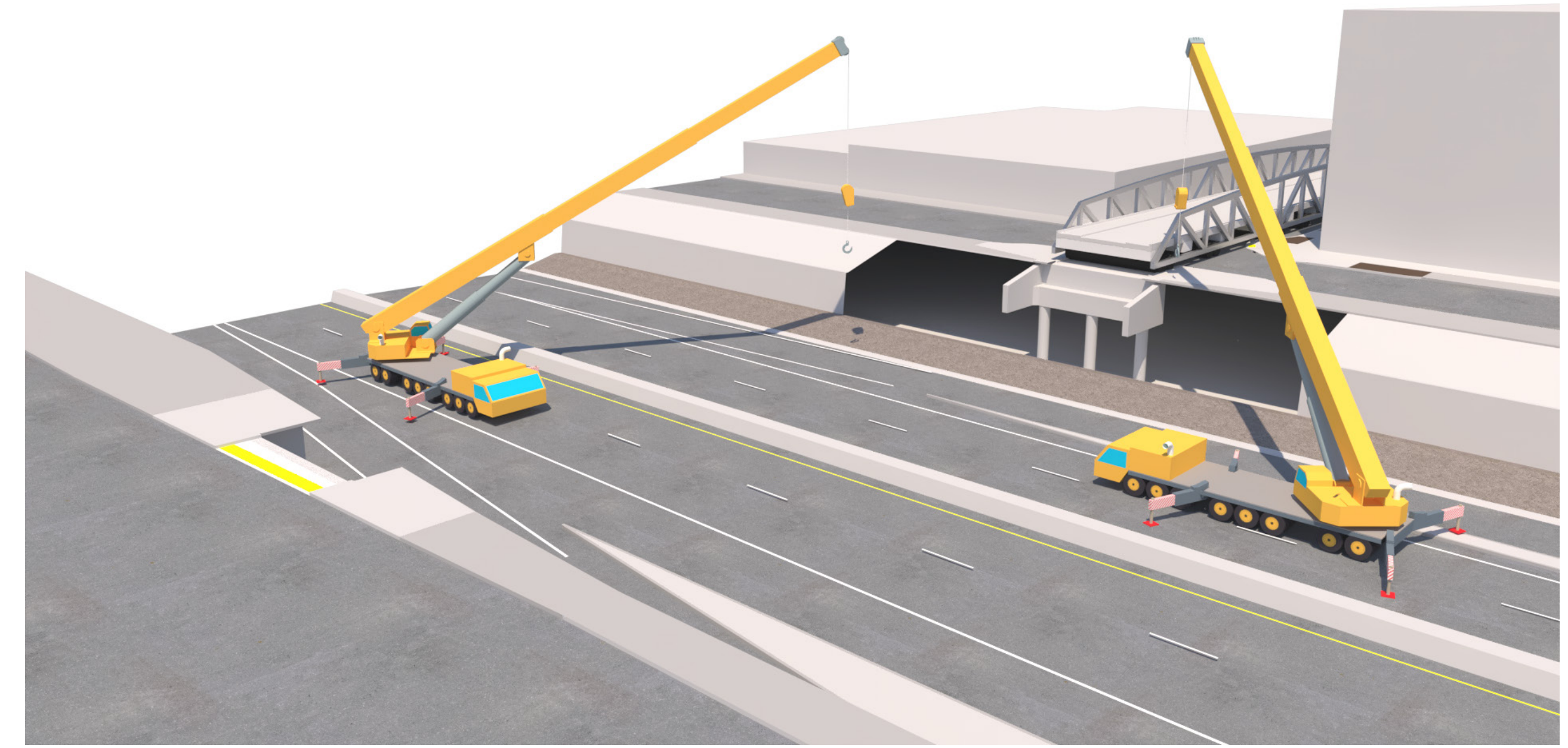


PBOT
PORTLAND BUREAU OF TRANSPORTATION
Commissioner: CHLOE EUDALY | Interim Director: CHRIS WARNER

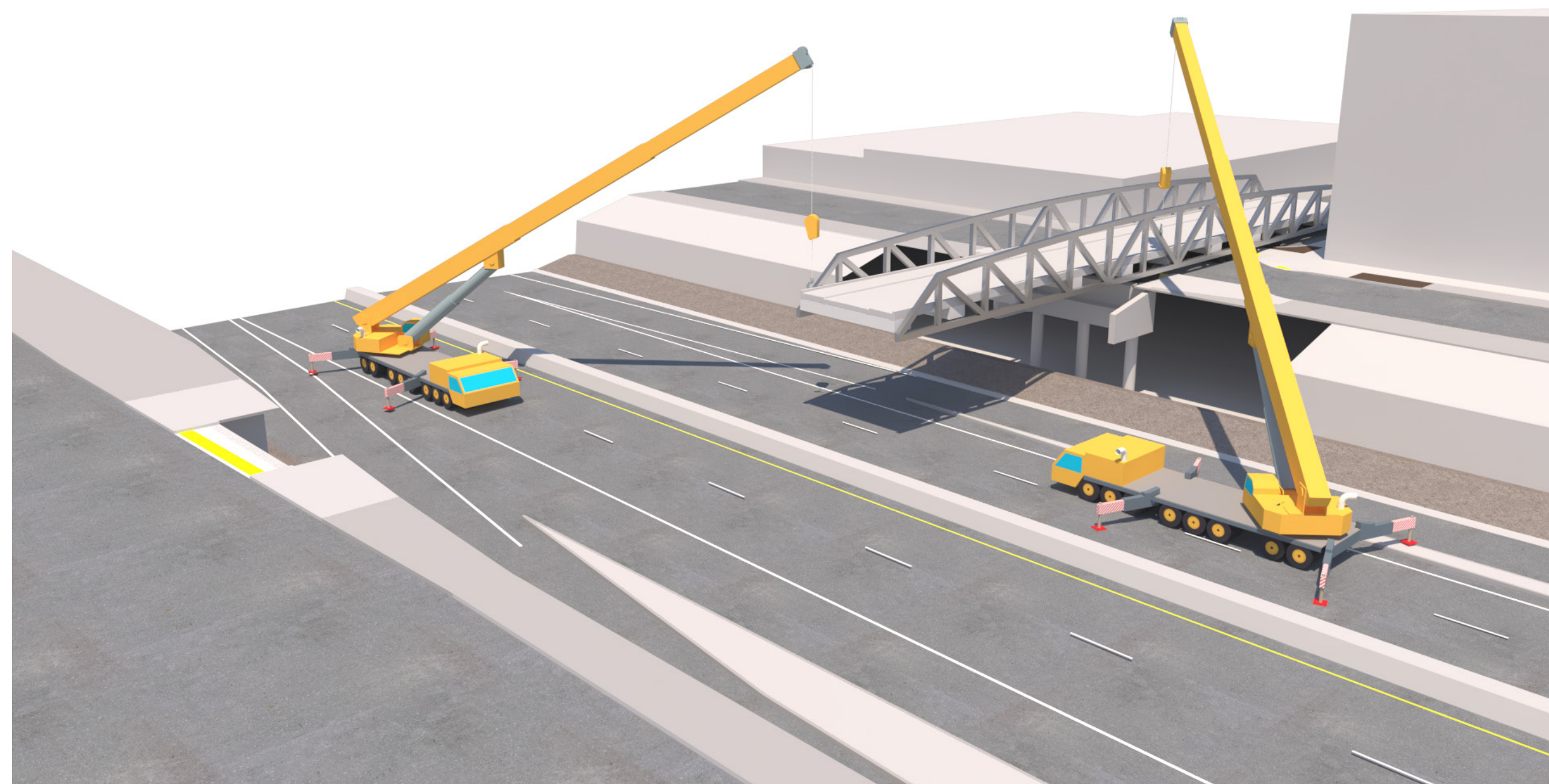
Flanders Crossing Bridge Construction Staging Plan



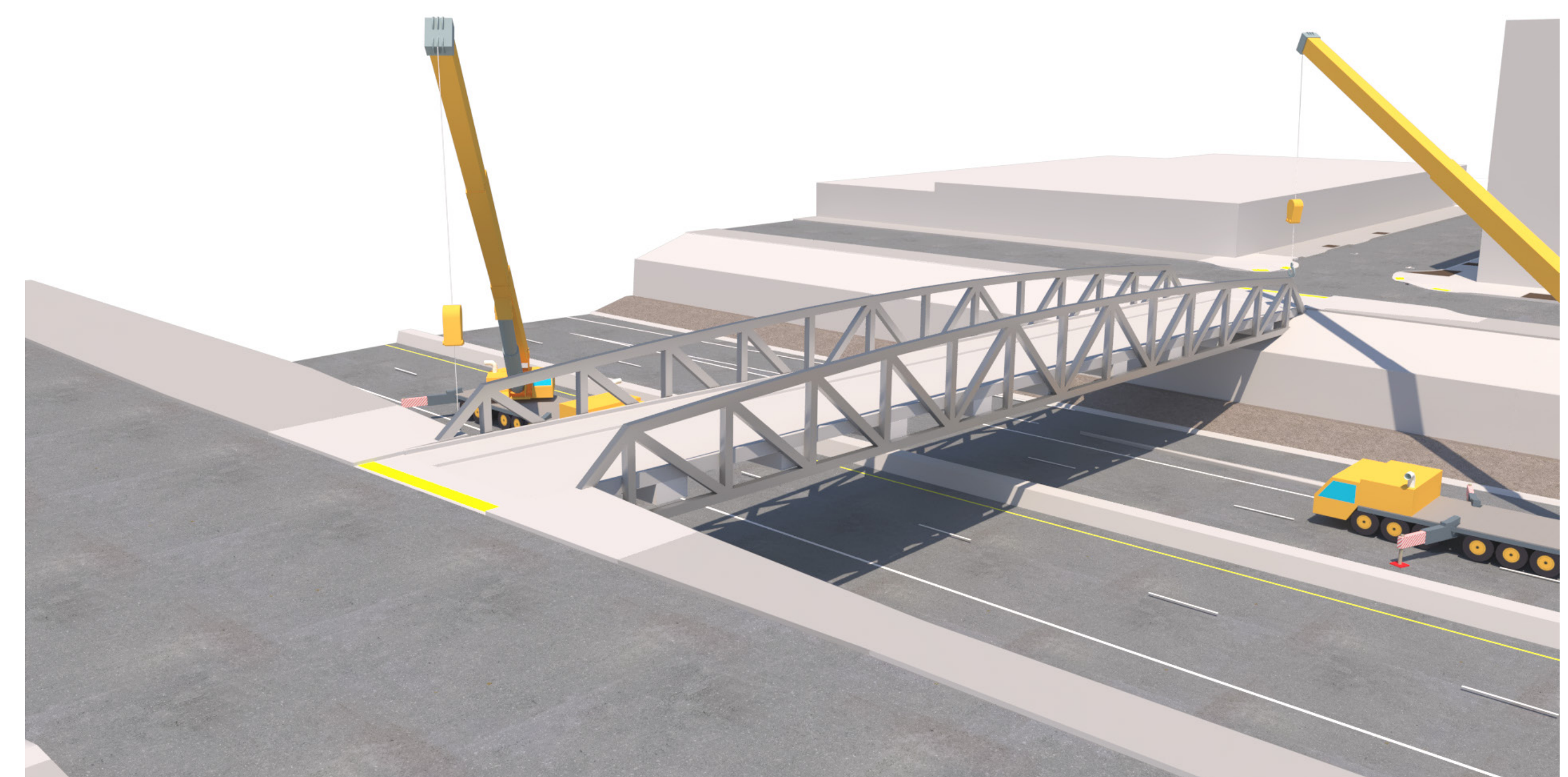
Stage 1 – Assembly of bridge on NW Flanders between 14th and 15th Ave



Stage 2 – Bridge on casters, one end picked up by crane #1



Stage 3 – Crane #1 hands off to crane #2



Stage 4 – Final placement of bridge