

# City Transition Overview



## Portland Transition

**Voter approved.  
Community centered.  
City delivered.**



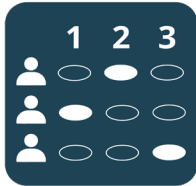
# Implementing the Voter-Approved Charter Amendments

## TODAY

## FUTURE



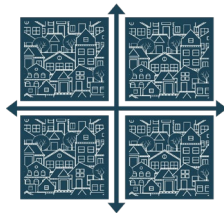
Vote for one candidate



Rank candidates



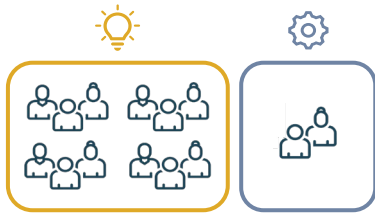
Citywide elections



Four geographic districts



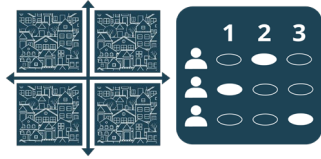
**Commission Form**  
4 commissioners  
+ mayor who create policy  
AND oversee bureaus.



**Mayor-Council**  
12 Councilors who create  
policy. Mayor manages city  
with a city administrator.

# Charter Implementation

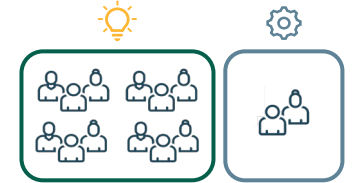
## Election methods



- Establish geographic districts
- Prepare for ranked-choice voting
- Educate voters and candidates

**Completed**     **In-progress**

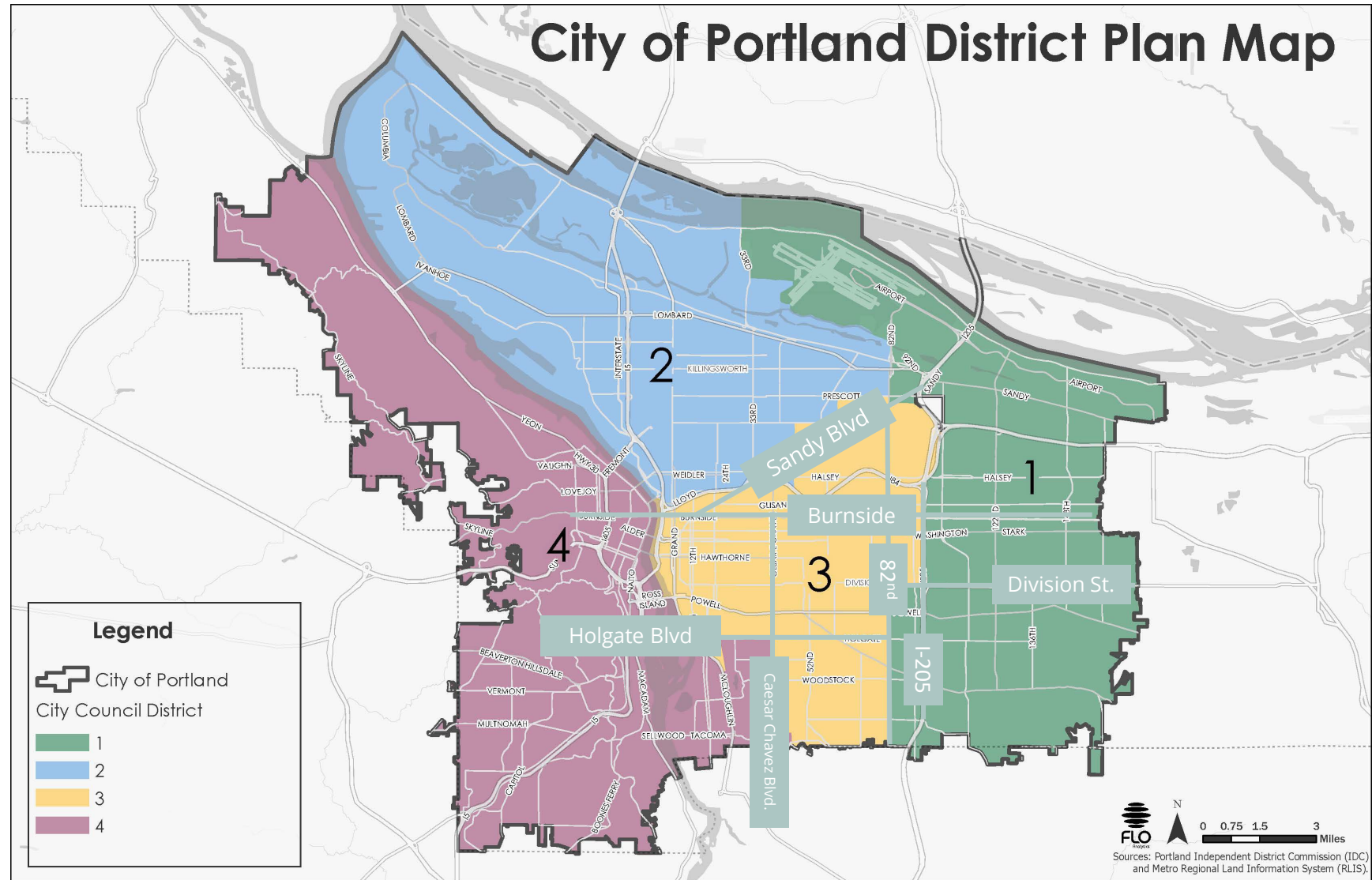
## Governance



- Establish elected official salaries
- Establish council operations
- Update city's budget process
- Renovate City Hall
- Review and revise city code
- Recruit a city administrator
- Implement Organizational improvements and alignment

# Districts

Find your district:  
[PortlandMaps.com](http://PortlandMaps.com)



# Roles of the Council and Mayor



## Council Sets Citywide Policy

1. Engages the public on community needs.
2. Sets the direction of the city, through a strategic planning process, usually with the help of the City Administrator.
3. Approves the City budget in accordance with the strategic plan.
4. Approves policies\* necessary to respond to community or organizational issues and to achieve strategic outcomes.



## Mayor Oversees City Services

1. Engages with staff and leadership on city operational needs.
2. Leads implementation of Council's strategic plan, with the help of city leadership.
3. Proposes budget funding necessary to implement the strategic plan.
4. Requests development of policies\* to address community or operational issues or to achieve strategic outcomes.

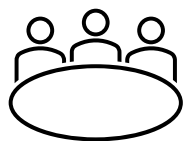
**\*Policies can be developed by either council offices or city staff. Some items currently approved by council may be approved by the mayor or designee in the future.**

# City of Portland Leadership and Policy Ecosystem

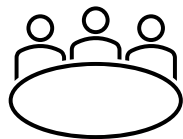
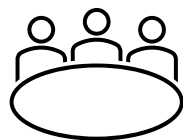
## LEGISLATIVE + QUASI-JUDICIAL

## EXECUTIVE

**City Council:**  
Elected by District  
Policy Focused  
Legislative Body



**Council Committees:**  
Determined by Council  
and aligns with policy  
priorities



**Mayor:**  
Elected Citywide  
Head of Executive Branch  
*Administrative and Strategic  
Policy Focused*



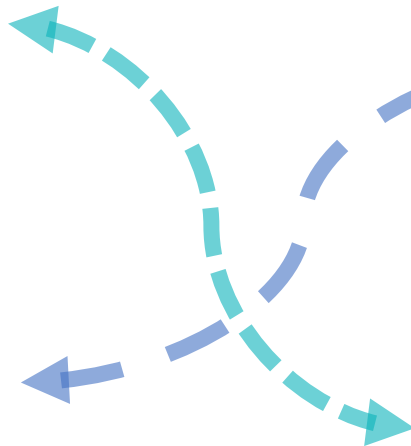
**City Administrator:**

*Appointed by Mayor, confirmed by Council*  
Day to Day Operations of the City  
including policy development support



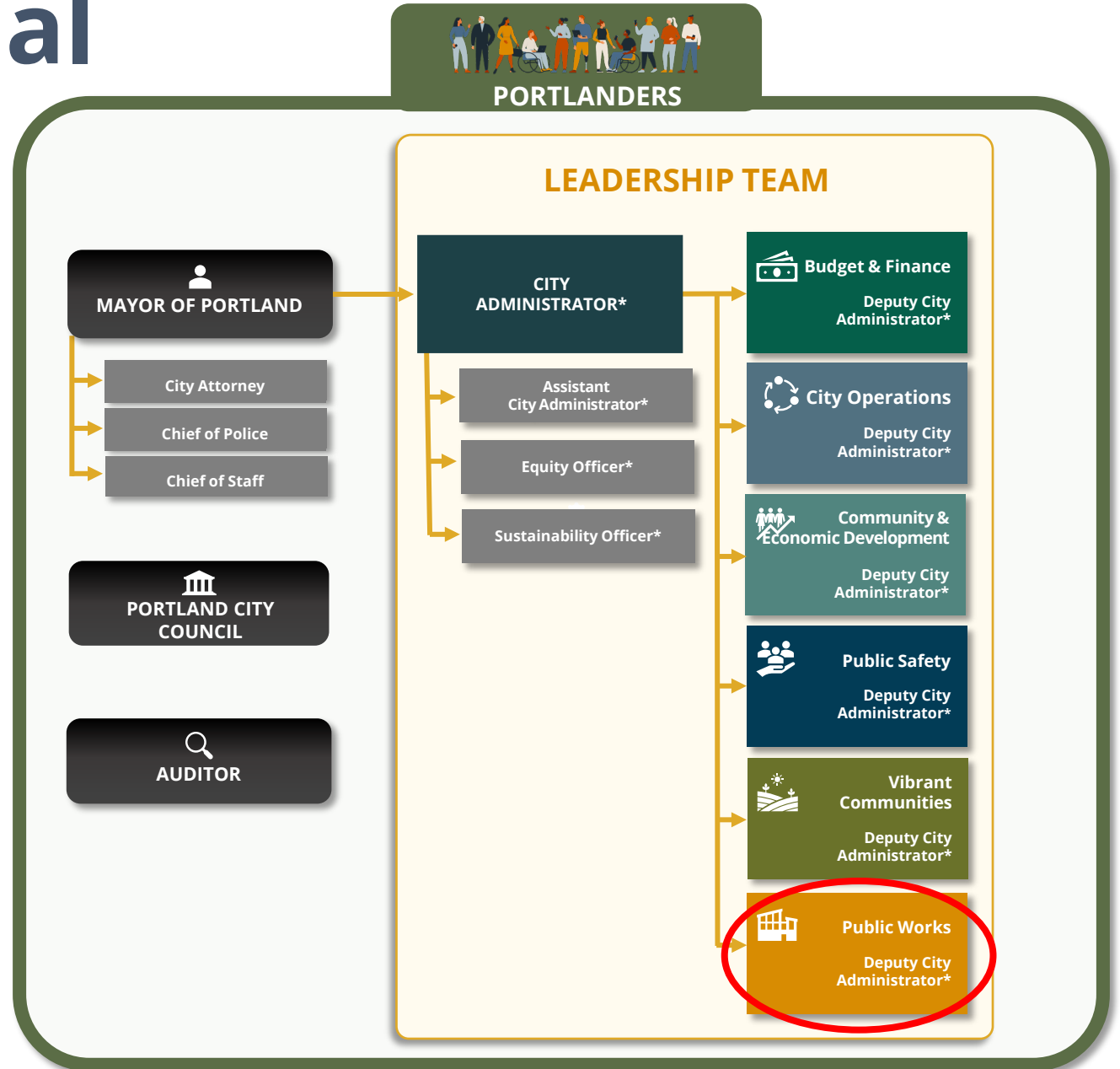
**Deputy City Administrators of Service Areas:**

*Hired and fired by City Administrator*  
Manage policy development within service area  
Provides services to City  
Focused on district-based and citywide services  
Advances policy through Mayor or Committees



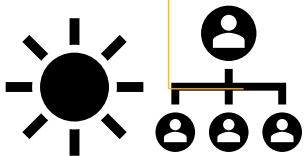
# City Organizational Structure

- Focus for now on readiness
- Change takes time, and varies across the organization
- Working in service areas will enhance coordination and communication
- A “one city” culture will help with alignment of work with citywide strategy and shared goals.



# Upcoming Milestones

Host many summer engagement and tabling opportunities across town.



Onboard newly-elected officials and swearing-in ceremony



Mayor recruits for City Administrator.

Support close-out, hand-off and reporting efforts.



JUNE	JULY	AUG	SEPT	OCT	NOV	DEC	JAN	FEB	MAR	APR	MAY	JUNE
------	------	-----	------	-----	-----	-----	-----	-----	-----	-----	-----	------

Voter education begins.

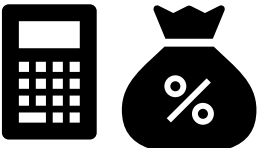


Election results.



New council meets.

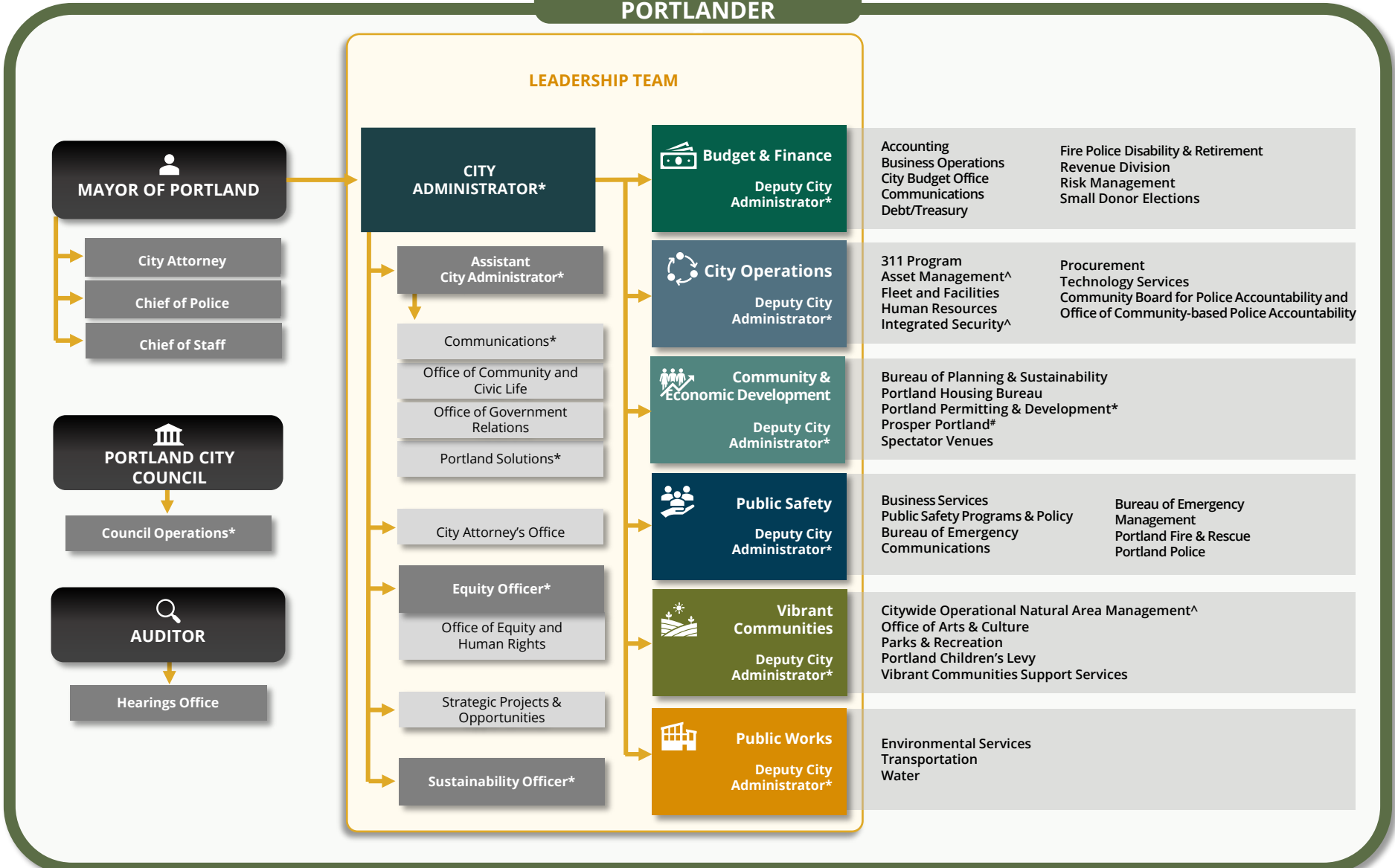
Mayor's proposed budget released.



Council deliberates on budget



CITY OF PORTLAND, OREGON  
Organizational Chart reflecting  
changes as of 7/1/24  
**CITY ORGANIZATION**



**Key**

- \* New program/function
- # Reports to the Prosper Portland Commission
- ^ To be created, pending assessment