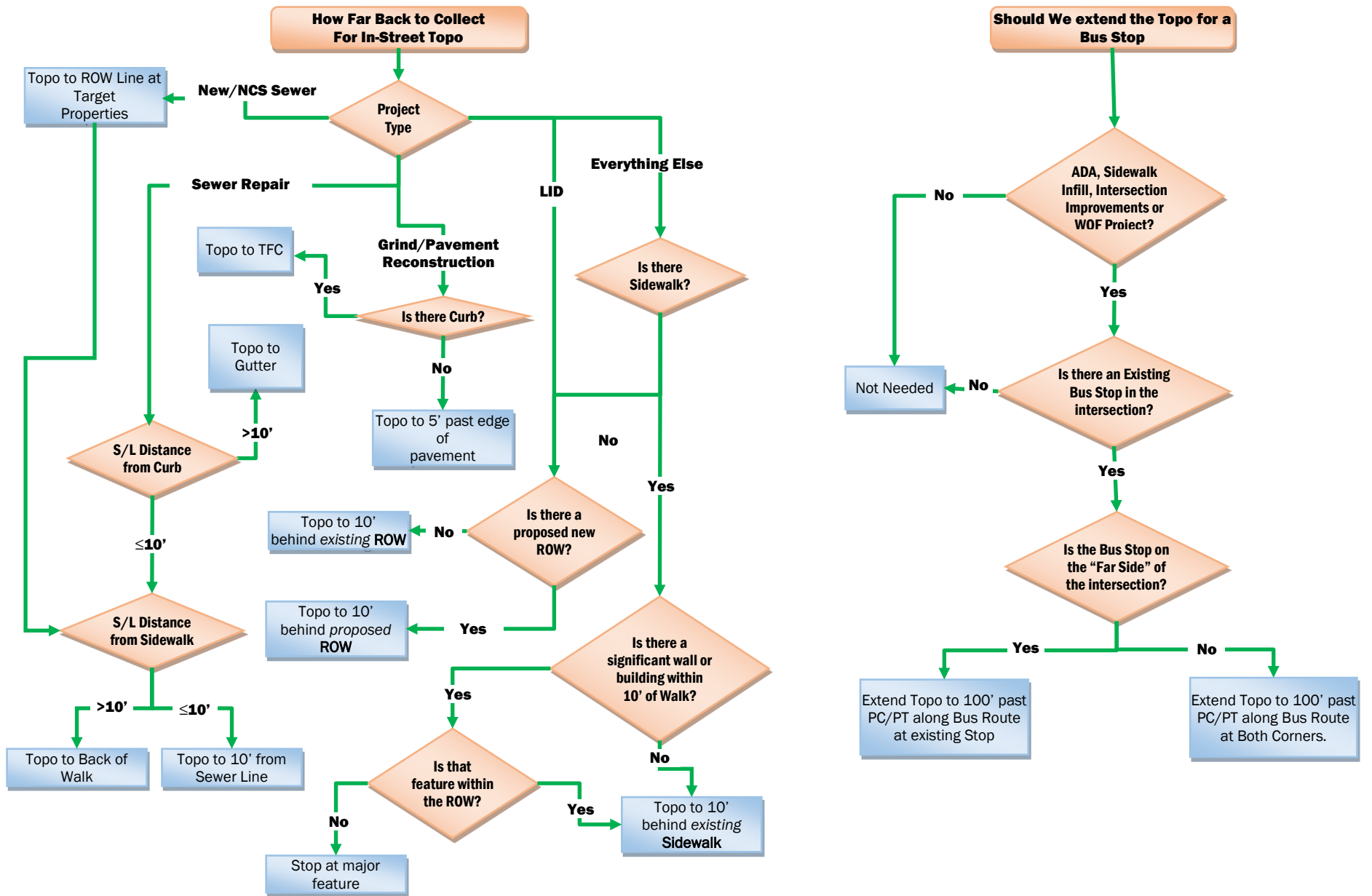
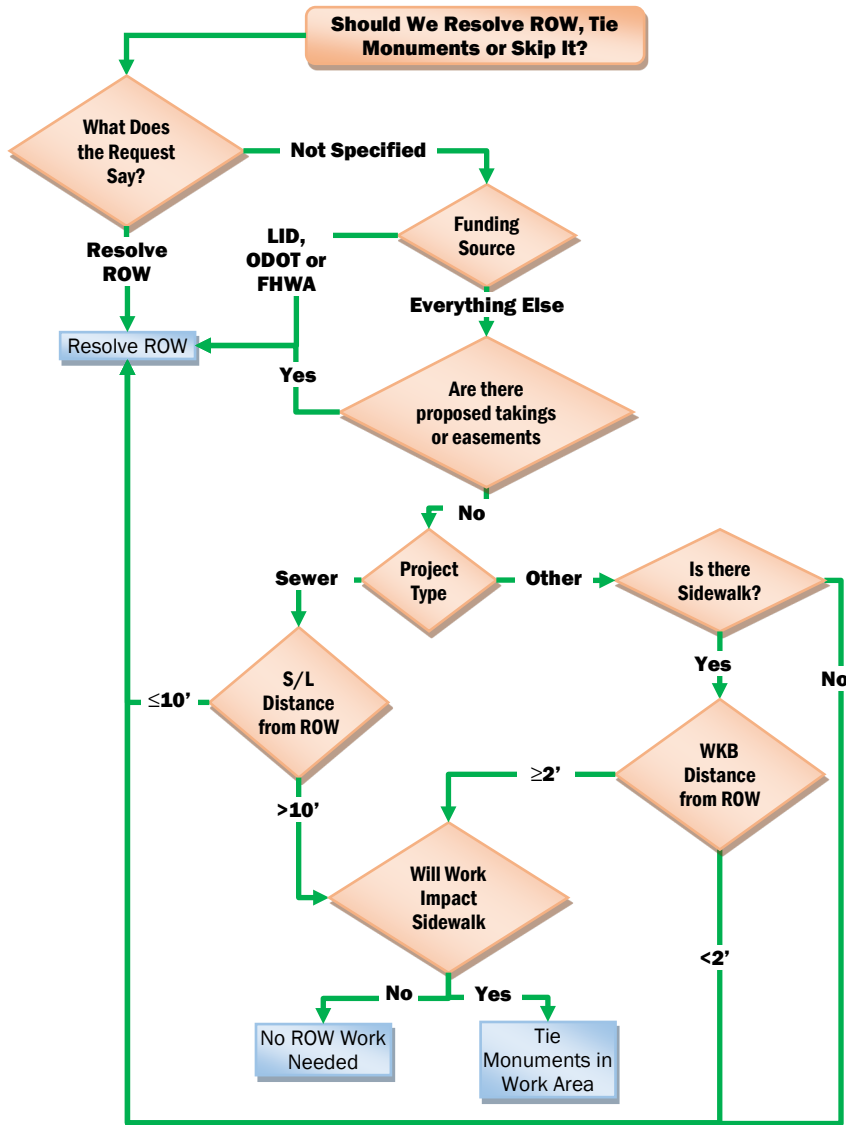


**Standard Topo Language for Street/Sidewalk Projects, Sewer Rehab, WQF Sites & ADA Ramps
Decision Trees**

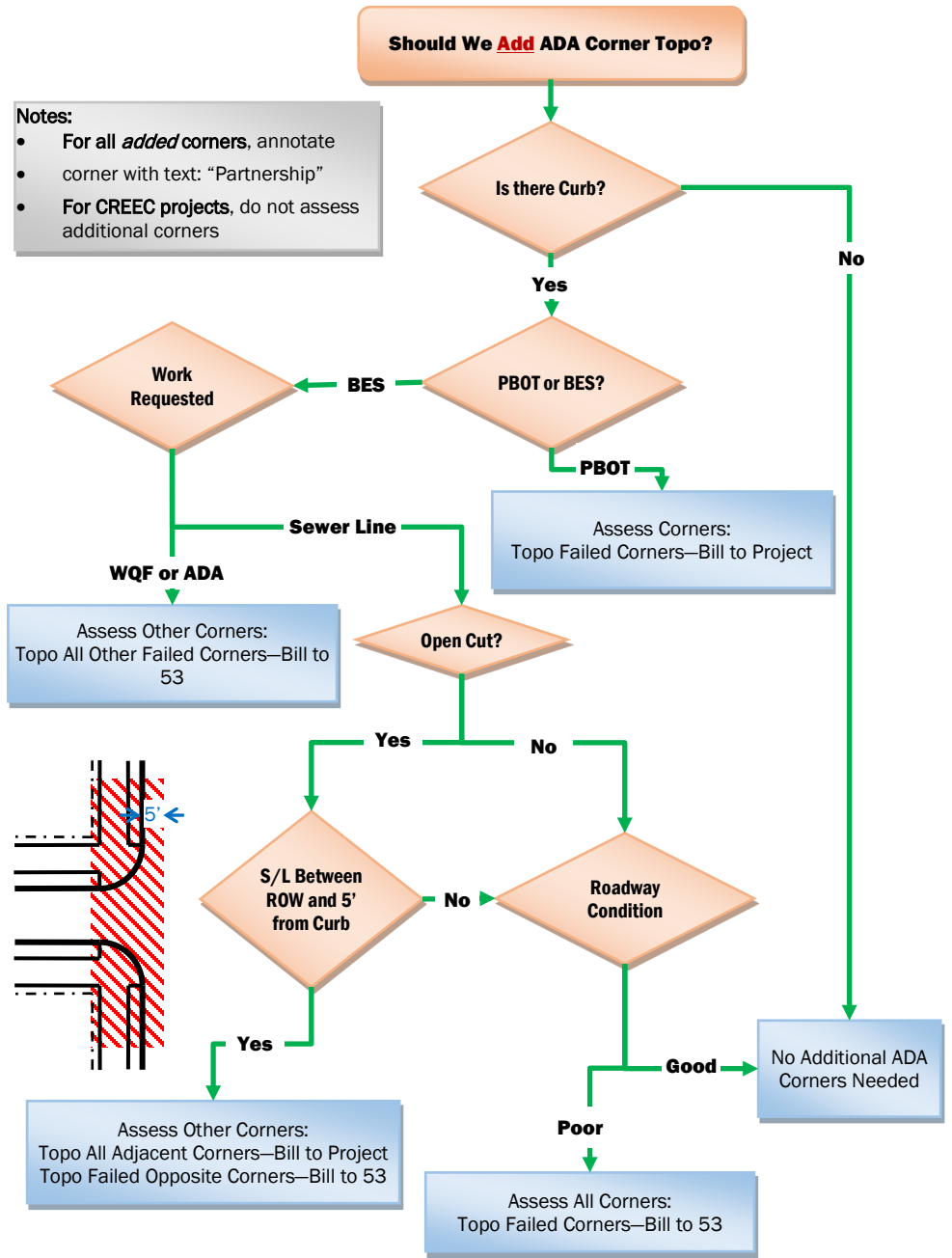


Standard Topo Language for Street/Sidewalk Projects, Sewer Rehab, WQF Sites & ADA Ramps
Decision Trees

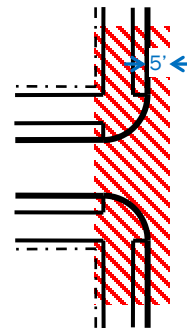


Additional Considerations:

- **ADA Corner & WQF Only Topo's:** We do not need to resolve ROW when there is a 0 offset building present
- **CREEC Projects:** If ROW resolution is required, approximate property/ROW lines can be established by utilizing existing GIS data.



- Notes:**
- For all *added corners*, annotate corner with text: "Partnership"
 - For **CREEC projects**, do not assess additional corners



Addenda & Clarifications

Trees & Shrubs

July 2019

- Trees smaller than the standards set on Page 1 should be collected as Shrubs and excluded from the tree spreadsheet.
- Large Vegetation should be included in topography if it is of high monetary value (e.g. established rose bushes, Japanese Maples, etc.) or could pose a constraint on design or require additional work for removal (e.g. hedges, large laurel or juniper bushes, significant blackberries, etc.).
- Other vegetation, such as flowers and small bushes, can be safely ignored.

FFE w/ True Basement Elevation

November 2019

- If you are able to collect the FFE at the true basement elevation for whatever reason, please do so.
- Code that shot as an FFEB.
- On the note, before you enter the address, add the note “Shot at Basement” (yes, actually spell that out, we want this note to stand out).

★ **CREEC ADA Low Detail Topo**

November 2019

Note to Designers: Only use this topo method when a CREEC squad designer has visited the site in person and determined that this level of detail will be sufficient. Otherwise use the Red Star ADA Corner Topo Method.

- CREEC ADA Low Detail Topo will be marked with a Yellow Star.
- Only collect “hard” features: Curb/Gutter, Front/Back of Walk, AC shots, Trees, Walls and Concrete connections within the same scope as the Green area on a normal ADA Corner Topo.
- Utilities:
 - **Do not** request utility locates. Collect them if present, but we will not request utility locates.
 - **Do** collect utility surface features (Valves, Poles, MH Lids, etc.) in the collect area.
- Do not extend topo to the remainder of the intersection.
- Resolve ROW per normal CREEC/ADA Corner Topo rules.

- Assumed coordinates and elevations are sufficient. If it’s easy to use real values, go ahead, but do not spend more than 1/2 hour on control.

CREEC Project Special Considerations

December 2019

For CREEC Related ADA corner projects only – both Red & Yellow Star Requests – please modify the standards as follows unless explicitly directed:

- Do not assess or add any receiving ramps.
- Do not do additional topo for bus stops.
- If ROW resolution is required, *approximate* property/ROW lines can be established by utilizing existing GIS data.
- Set RP Nails at the PC & PT at 10’ from curb and data collect as “RP”. (i.e. pre-stake it)

Corner Grid

January 2022

For any green topo areas around an existing round corner:

- Collect additional shots at 4’ and 8’ from gutter on 5’ intervals.
- Do not measure, lay out or match shots. Keep it simple and quick.
- Be wary of breaklines in “grid” area.

