

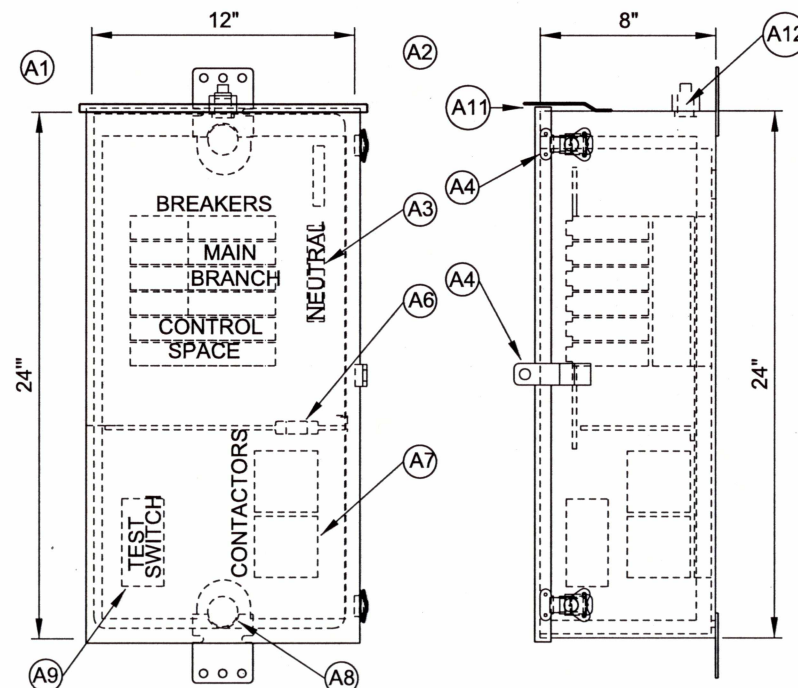
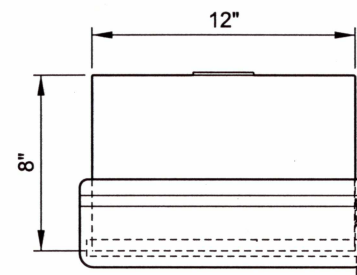
ITEM	DESCRIPTION
A1	DOOR HINGE: FULL-LENGTH, S.S.
A2	CABINET: 14 GA., 304 STAINLESS STEEL, #4 FINISH VANDAL-PROOF
A3	DEAD-FRONT PLATE: 14 GA. STAINLESS STEEL.
A4	DOOR TO BE FULLY GASKETED
A5	CABINET HANDLES: 3-POINT, VAULT TYPE WITH PADLOCK PROVISIONS
A6	RAISE THE PANEL A MINIMUM OF ONE INCH, INSTALL DOUBLE NUT
A7	BENEATH, AND GROUT IN SPACE
A8	FINISH : UNPAINTED BRUSHED STAINLESS STEEL
A9	PROVIDE SILVER-PLATED, COPPER BUS BARS
A10	GROUND RODS SHALL BE 0.625" X 8'-00", COPPER

NOTES:

1. LOCATE FACE OF PANELS 30" BACK FROM FACE OF CURB OR IN LINE WITH POLES. WHICHEVER IS GREATER. PANEL DOOR SHALL BE ON PRIVATE PROPERTY SIDE OF CABINET, UNLESS OTHERWISE SPECIFIED.
2. CABINETS SHALL BE FABRICATED FROM 14 GAUGE, 304 STAINLESS STEEL, SPOT-WELDED CONSTRUCTION, #4 FINISH. ALL WELDS SHALL BE THOROUGHLY CLEANED. CABINET SHALL BE DEAD-FRONT CONSTRUCTION, DEAD-FRONT SHALL BE FABRICATED FROM 14 GAUGE STAINLESS STEEL. NO ELECTRICAL EQUIPMENT SHALL BE ATTACHED TO THE DEAD-FRONT PANEL.
3. CABINET SHALL BE U.L. LISTED FOR USE AS SERVICE EQUIPMENT AND SHALL BE RATED NEMA 3R. CIRCUIT BREAKERS SHALL BE 240 VOLT, 2-POLE OR 120 VOLT, 1-POLE, AS REQUIRED. ALL INTERNAL WIRING, EXCEPT FIELD WIRING, SHALL BE DONE BY A U.L. LISTED FACILITY. ALL SCREWS SHALL BE STAINLESS STEEL.
4. TERMINALS SHALL BE SIZED FOR CONDUCTOR SIZES SHOWN ON PLANS.
5. CONTRACTOR SHALL VERIFY AVAILABLE GROUND FAULT CURRENT FOR MAIN BREAKER INTERRUPT CAPACITY.
6. CONTRACTOR SHALL OBTAIN ELECTRICAL PERMIT FOR STREET LIGHTING SERVICE AND BRANCH CIRCUITS FROM CITY OF PORTLAND BUREAU OF DEVELOPMENT SERVICES.

LIGHTING SERVICE CABINET & PEDESTAL-TYPE "C"

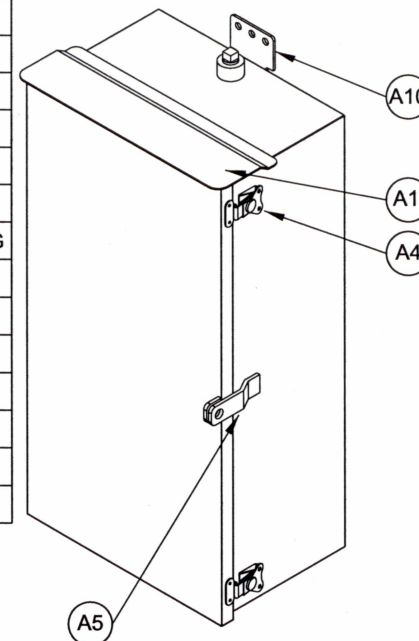
ITEM	DESCRIPTION
A1	POLE PANEL BOARD
A2	SOLID COPPER GROUND
A3	100% RATED COPPER NEUTRAL
A4	NON LOCKING LINK LOCK
A5	0.188" X 1" PADLOCK PROVISION
A6	BARRIER WITH 1.25" BUSHED OPENING
A7	CONTACTOR: SQ D #8903, SM-01.
A8	1" K/O'S TOP AND BOTTOM
A9	TEST SWITCH: HUBBEL 1221, 20-AMP, 1-POLE, 120/277 VOLT
A10	WOOD POLE MOUNTING PROVISIONS
A11	14-GAUGE S/S DRIP EDGE
A12	0.75" S/S HUB WITH SEALED PLUG



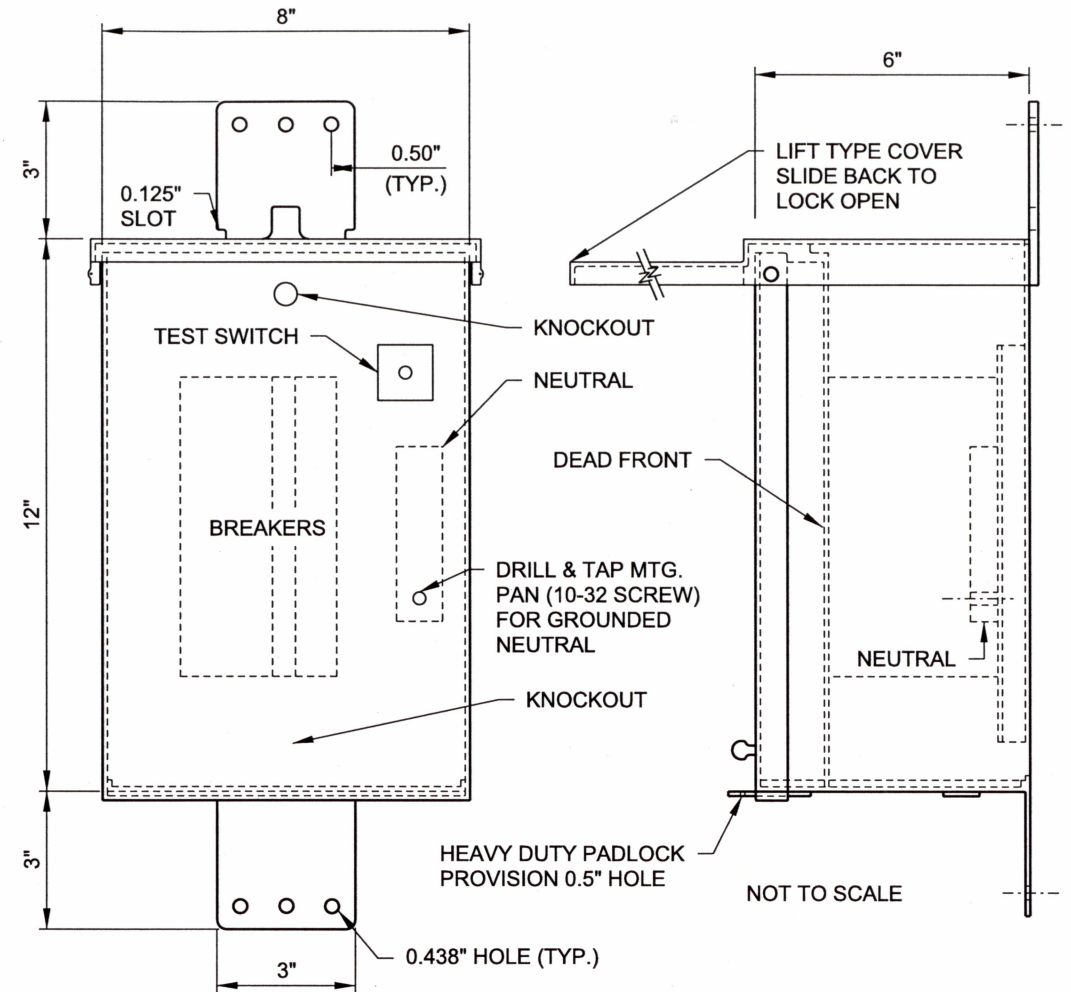
NOTES:

1. CABINET SHALL BE FABRICATED FROM 14 GAUGE, 304 STAINLESS STEEL, SPOT-WELDED CONSTRUCTION. #4 FINISH. DEAD FRONT SHALL BE FABRICATED FROM 14 GAUGE S.S.
2. MAXIMUM SIZE OF MAIN BREAKER IS 60 AMPS.

LIGHTING SERVICE CABINET-TYPE "B"



NOT TO SCALE



NOTES:

1. CABINET SHALL BE FABRICATED FROM 14 GAUGE, 304 STAINLESS STEEL, SPOT-WELDED CONSTRUCTION. #4 FINISH. ALL WELDS SHALL BE THOROUGHLY CLEANED. CABINET SHALL BE DEAD-FRONT CONSTRUCTION. DEAD-FRONT SHALL BE FABRICATED FROM 14 GAUGE STAINLESS STEEL. NO ELECTRICAL EQUIPMENT SHALL BE ATTACHED TO THE DEAD-FRONT PANEL.
2. WHEN SPECIFIED, THE EXTERIOR OF THE CABINET SHALL BE PAINT WITH WASSER PAINT TO MATCH COLOR ON POLES.
3. CABINET SHALL BE U.L. LISTED FOR USE AS SERVICE EQUIPMENT AND SHALL BE RATED 3R. CIRCUIT BREAKERS SHALL BE G.E. TYPE TEB, 240VOLT, 2-POLE OR 120 VOLT, 1-POLE, AS REQUIRED. ALL INTERNAL WIRING, EXCEPT FIELD WIRES, SHALL BE DONE BY A U.L. LISTED FACILITY. ALL SCREWS SHALL BE STAINLESS STEEL.

LIGHTING SERVICE CABINET-TYPE "A"

The selection and use of this Standard Drawing, while designed in accordance with generally accepted engineering principles and practices, is the sole responsibility of the user.

Note:
All material and workmanship shall be in accordance with the City of Portland Standard Construction Specifications.

**BUREAU OF TRANSPORTATION
CITY OF PORTLAND, OREGON**

Steve Tamm
Chief Engineer

Standard Drawing Title

**STREET LIGHTING
SERVICE CABINET
DETAILS**

Effective Date: 03-22-12

Calc. Book No.:

Baseline Report Date:

Standard Drawing No.

P-671