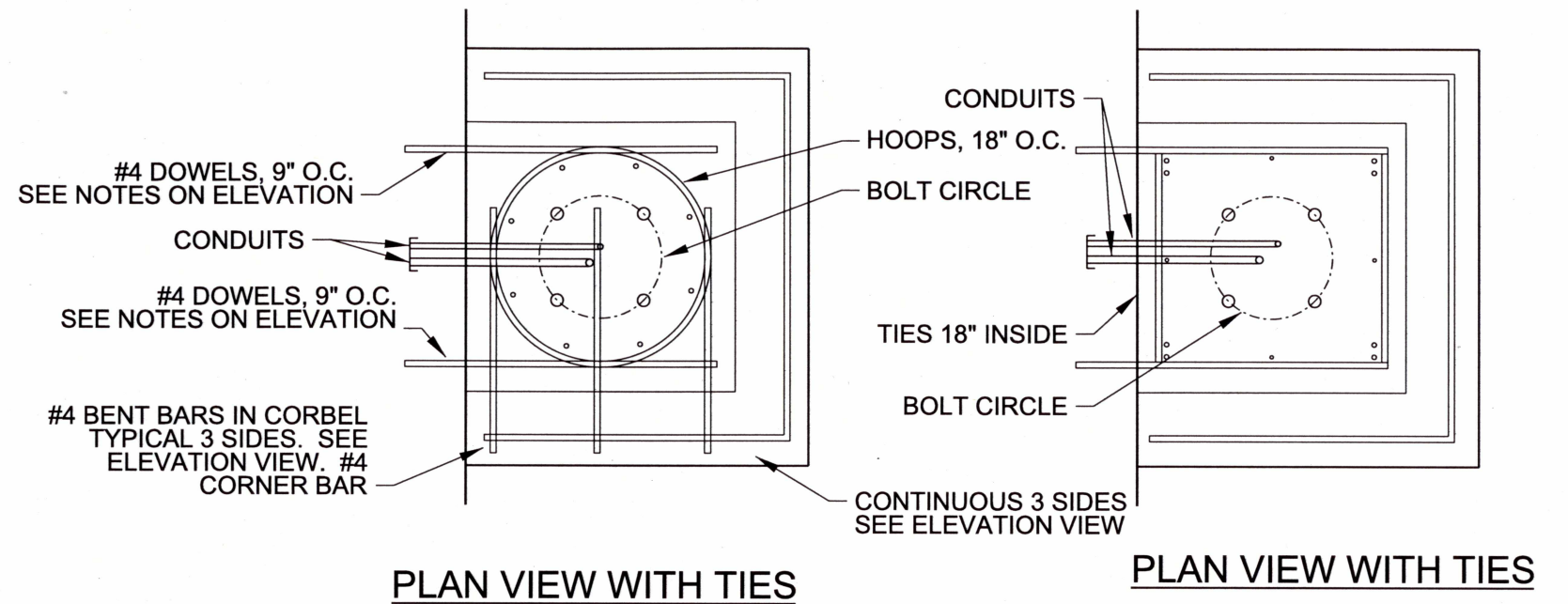


**TYPE "B" BASEMENT POLE FOOTING  
ELEVATION VIEW**



① NOTES THIS DETAIL:  
EMBED 5" MIN. INTO EXISTING CONCRETE BASEMENT WALL WITH KELIGROUT OR APPROVED EQUAL. 0.625" DIA. HOLE REQUIRED. FULL LAP WITH VERTICAL CAGE (LENGTH VARIES 2'-0" TO 3'-8")

NOT TO SCALE

The selection and use of this Standard Drawing, while designed in accordance with generally accepted engineering principles and practices, is the sole responsibility of the user.

Note:  
All material and workmanship shall be in accordance with the City of Portland Standard Construction Specifications.



BUREAU OF TRANSPORTATION  
CITY OF PORTLAND, OREGON

*Steve Toenn*  
Chief Engineer

Standard Drawing Title

**STREET LIGHTING  
TYPE "B" BASEMENT POLE FOOTING**

Effective Date: 05-10-12

Calc. Book No.:

Baseline Report Date:

Standard Drawing No.

**P-662**