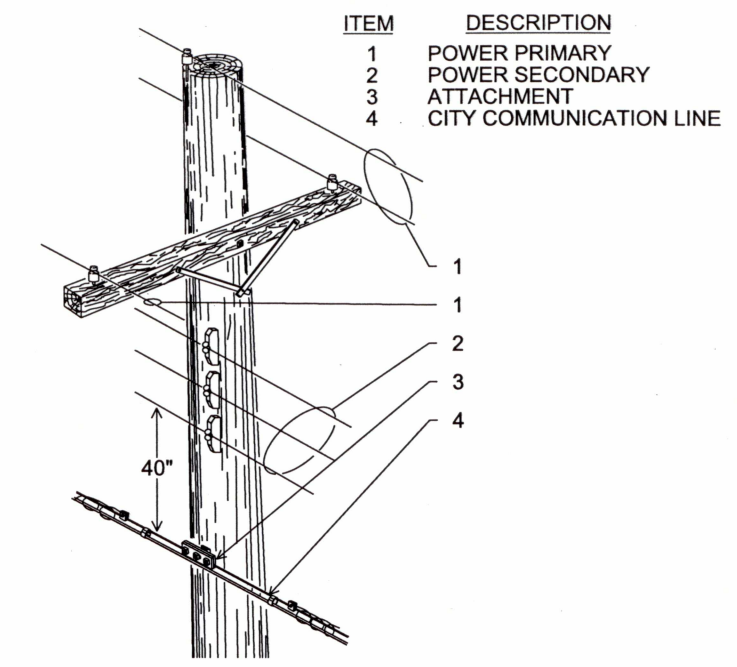
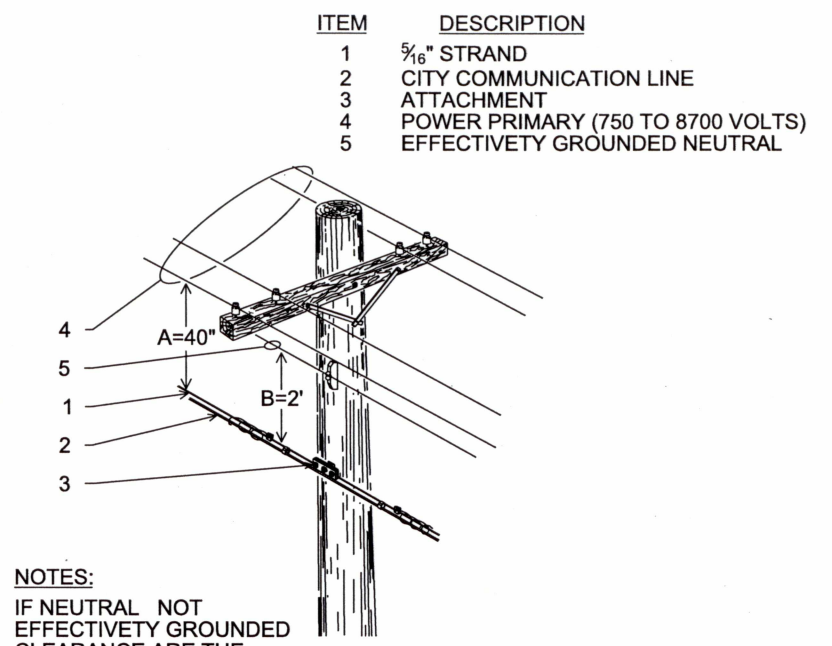


**CLEARANCE
FIBER & TELEPHONE CABLE**



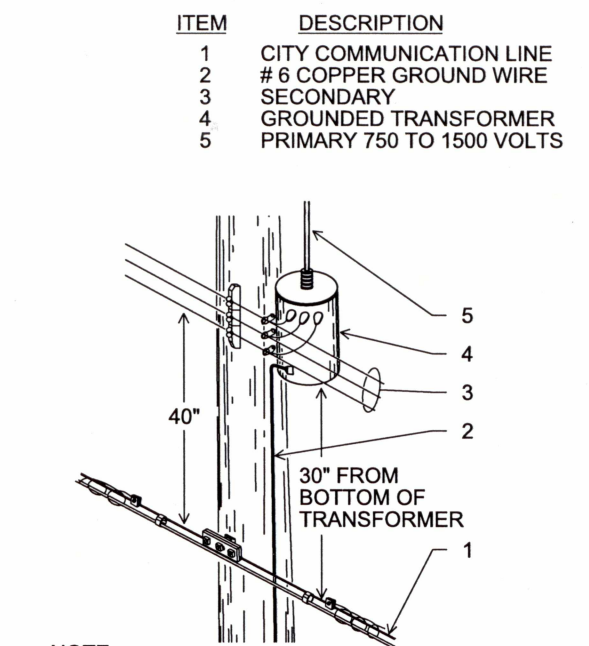
**CLEARANCE
POWER SECONDARY
(0 TO 750 VOLTS)**



NOTES:
IF NEUTRAL NOT
EFFECTIVELY GROUNDED
CLEARANCE ARE THE
SAME AS PHONE WIRE

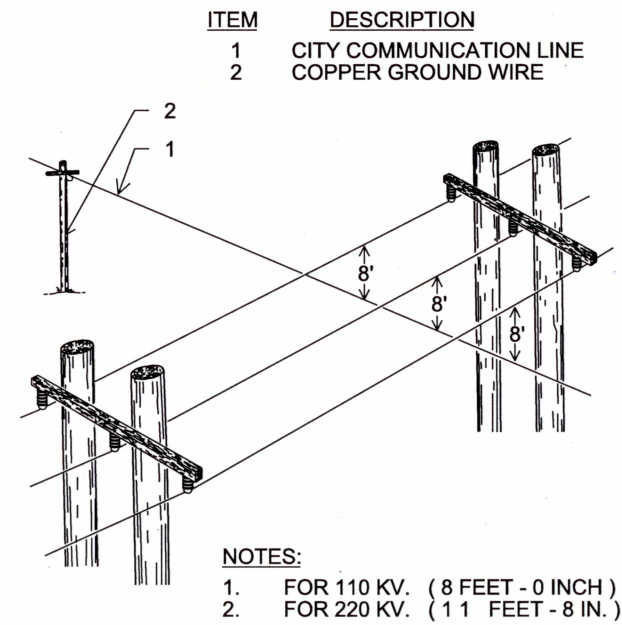
VOLTAGES ABOVE 8700 VOLTS
A AND B CLEARANCE
INCREASE TO 60"

**CLEARANCE
POWER PRIMARY
(750 TO 8700 VOLTS)**



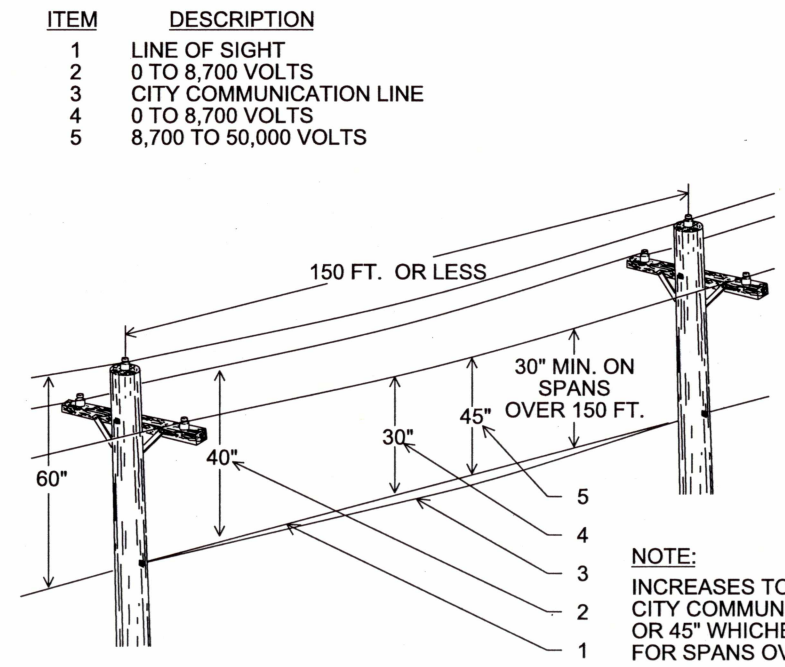
NOTE:
IF THE TRANSFORMER IS NOT GROUNDED,
CLEARANCES INCREASE TO:
40" FOR 0 TO 8700 VOLTS
60" FOR GREATER THAN 8700 VOLTS

**CLEARANCE
POWER TRANSFORMER
(GROUNDED)**



NOTES:
1. FOR 110 KV. (8 FEET - 0 INCH)
2. FOR 220 KV. (11 FEET - 8 IN.)

**CLEARANCE
HIGH VOLTAGE UNDER CROSSING**



NOTE:
INCREASES TO 30" PLUS
CITY COMMUNICATION LINE SAG
OR 45" WHICHEVER IS GREATER
FOR SPANS OVER 150 FT.

**CLEARANCE
POWER PRIMARY MID-SPAN
(0 TO 8700 VOLTS & 8700 TO 50000 VOLTS)**

NOTE:
1. CLEARANCES SHOWN ON THIS SHEET NOT DRAWN TO SCALE.

<p>The selection and use of this Standard Drawing, while designed in accordance with generally accepted engineering principles and practices, is the sole responsibility of the user.</p>	<p>BUREAU OF TRANSPORTATION CITY OF PORTLAND, OREGON</p> <p><i>Steve Toom</i> Chief Engineer</p>	
	<p>Standard Drawing Title</p> <p>CABLE PLACEMENT AND CLEARANCE DETAILS</p>	
	<p>Effective Date: 03-22-12</p>	<p>Standard Drawing No.</p> <p>P-638</p>
	<p>Calc. Book No.:</p>	
<p>Note: All material and workmanship shall be in accordance with the City of Portland Standard Construction Specifications.</p>	<p>Baseline Report Date:</p>	