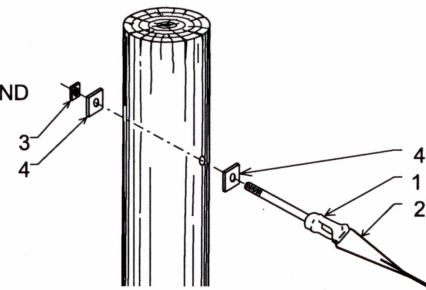


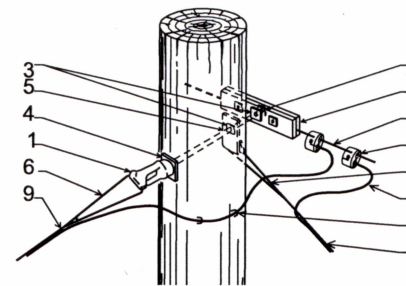
ASSEMBLED VIEW

ITEM	DESCRIPTION
1	THIMBLE EYE BOLT
2	5/16" PRE-FORM DEAD END
3	SQUARE NUT
4	SQUARE WASHER



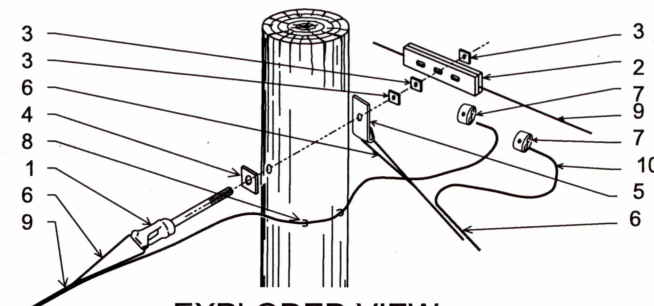
EXPLODED VIEW

**POLE FRAMING
SLACK-SPAN DEAD-END**



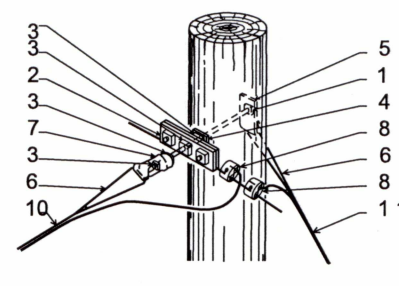
ASSEMBLED VIEW

ITEM	DESCRIPTION
1	THIMBLE EYE BOLT
2	SUSPENSION CLAMP
3	SQUARE NUT
4	SQUARE WASHER
5	GUY ATTACHMENT
6	5/16" PRE-FORM DEAD END
7	BONDING CLAMP
8	GALV. STAPLES
9	5/16" STRAND
10	5/16" GUY STRAND



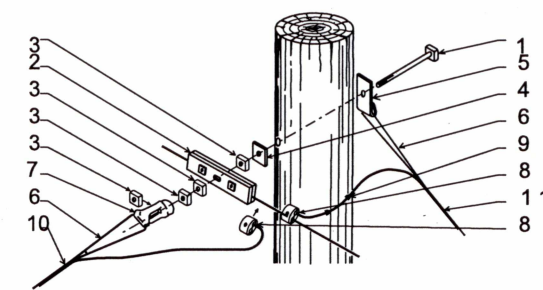
EXPLODED VIEW

**POLE FRAMING
LINE POLE DEAD-END
COMBINATION No. 1**



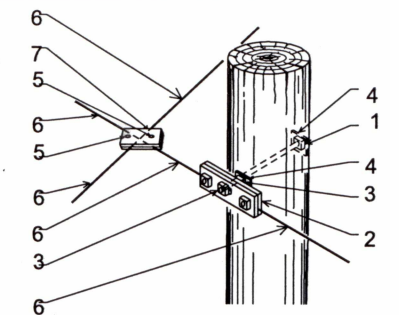
ASSEMBLED VIEW

ITEM	DESCRIPTION
1	5/8" MACHINE BOLT
2	SUSPENSION CLAMP
3	SQUARE NUT
4	SQUARE WASHER
5	GUY ATTACHMENT
6	5/16" PRE-FORM DEAD END
7	EYE NUT
8	BONDING CLAMP
9	GALV. STAPLES
10	5/16" STRAND
11	5/16" GUY STRAND



EXPLODED VIEW

**POLE FRAMING
DEAD-END COMBINATION No.2**

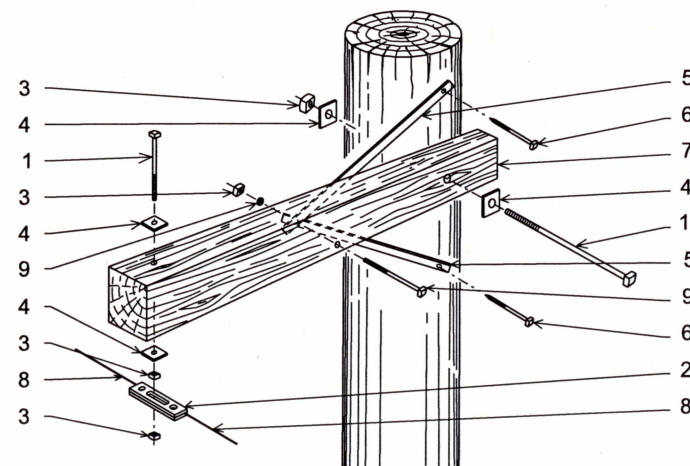


ASSEMBLED VIEW

ITEM	DESCRIPTION
1	5/8" MACHINE BOLT
2	SUSPENSION CLAMP
3	SQUARE NUT
4	SQUARE WASHER
5	1/2" x 3 1/2" MACHINE BOLT
6	5/16" STRAND
7	SUSPENSION CLAMP (2 HOLES)

**POLE FRAMING
CROSS - OVER POLE**

ITEM	DESCRIPTION
1	5/8" MACHINE BOLT
2	SUSPENSION CLAMP
3	SQUARE NUT
4	SQUARE WASHER
5	CARRIAGE ARM BRACE
6	1/2" x 3" LAG SCREW
7	WOOD ARM
8	5/16" STRAND
9	CARRIAGE BOLT WITH WASHER (ROUND)

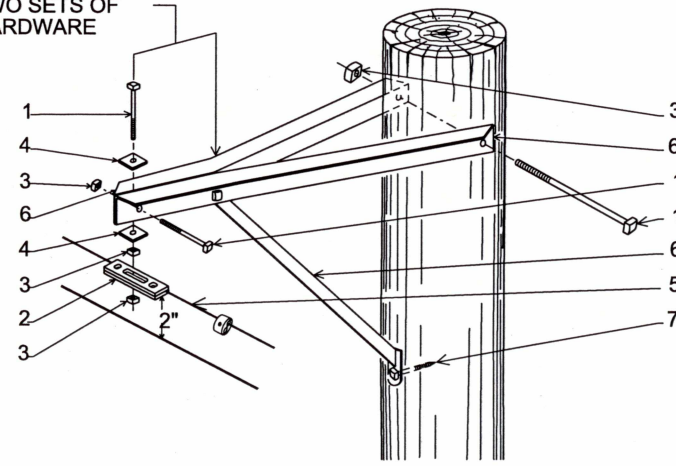


EXPLODED VIEW

**POLE FRAMING
WOOD CROSS-ARM**

ITEM	DESCRIPTION
1	5/8" MACHINE BOLT
2	SUSPENSION CLAMP
3	SQUARE NUT
4	SQUARE WASHER
5	5/16" STRAND
6	METAL CROSS ARM
7	1/2" x 3" LAG SCREW

ADJUSTABLE GROOVE OR
WILL ACCOMMODATE
TWO SETS OF
HARDWARE



EXPLODED VIEW

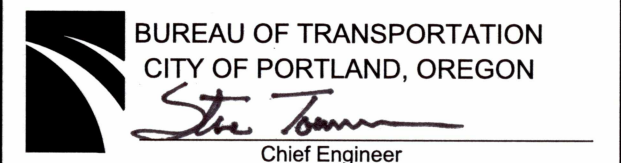
**CABLE PLACING
ADJUSTABLE EXTENSION ARM**

NOTE:

1. CHECK BONDING REQUIREMENTS ALL POLES THIS SHEET.
2. ASSEMBLIES SHOWN ON THIS SHEET NOT DRAWN TO SCALE.

The selection and use of this Standard Drawing, while designed in accordance with generally accepted engineering principles and practices, is the sole responsibility of the user.

Note:
All material and workmanship shall be in accordance with the City of Portland Standard Construction Specifications.



Standard Drawing Title
**CABLE PLACEMENT AND
WOOD POLE FRAMING DETAILS
(2 OF 3)**

Effective Date: 03-21-12
Calc. Book No.:
Baseline Report Date:
Standard Drawing No.
P-636