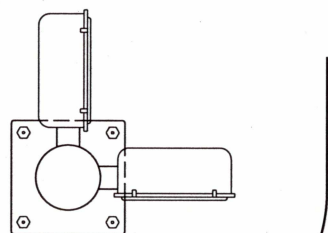


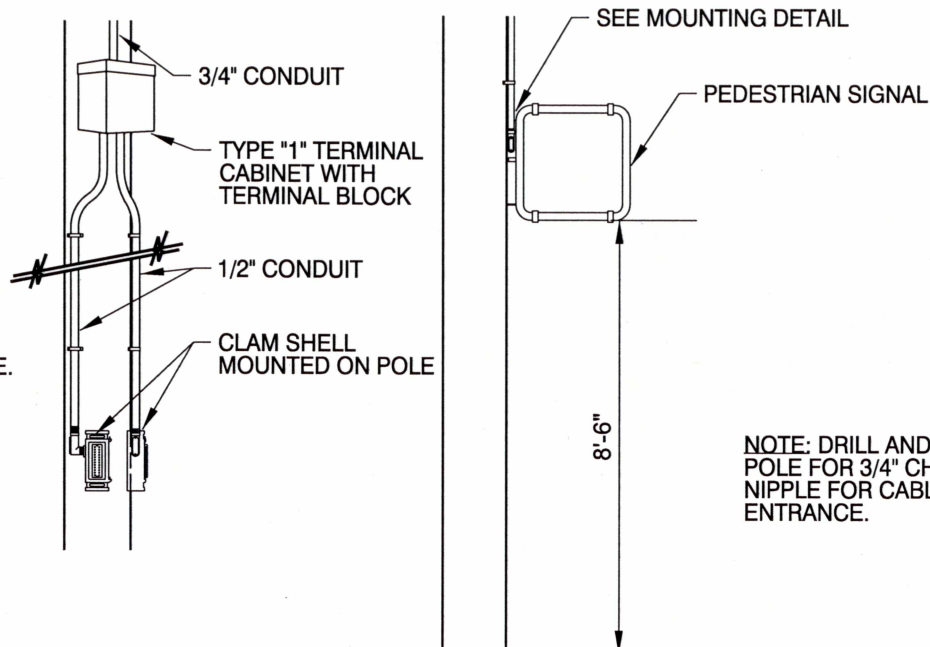
NOTES:
1.- DRILL AND TAP POLE FOR 3/4"
CHASE NIPPLE FOR CABLE ENTRANCE.
2.- DETERMINE PLACEMENT FROM
SIGNAL PLAN

ELEVATION



PLAN

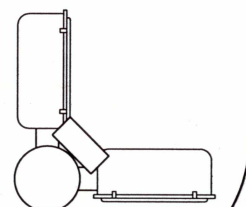
**PEDESTRIAN SIGNAL ON STEEL
POLE WITH CLAM SHELL MOUNT**



NOTE: PROVIDE 1/2" CONDUIT
TO PUSHBUTTONS FROM
TERMINAL CABINET IF
REQUIRED.

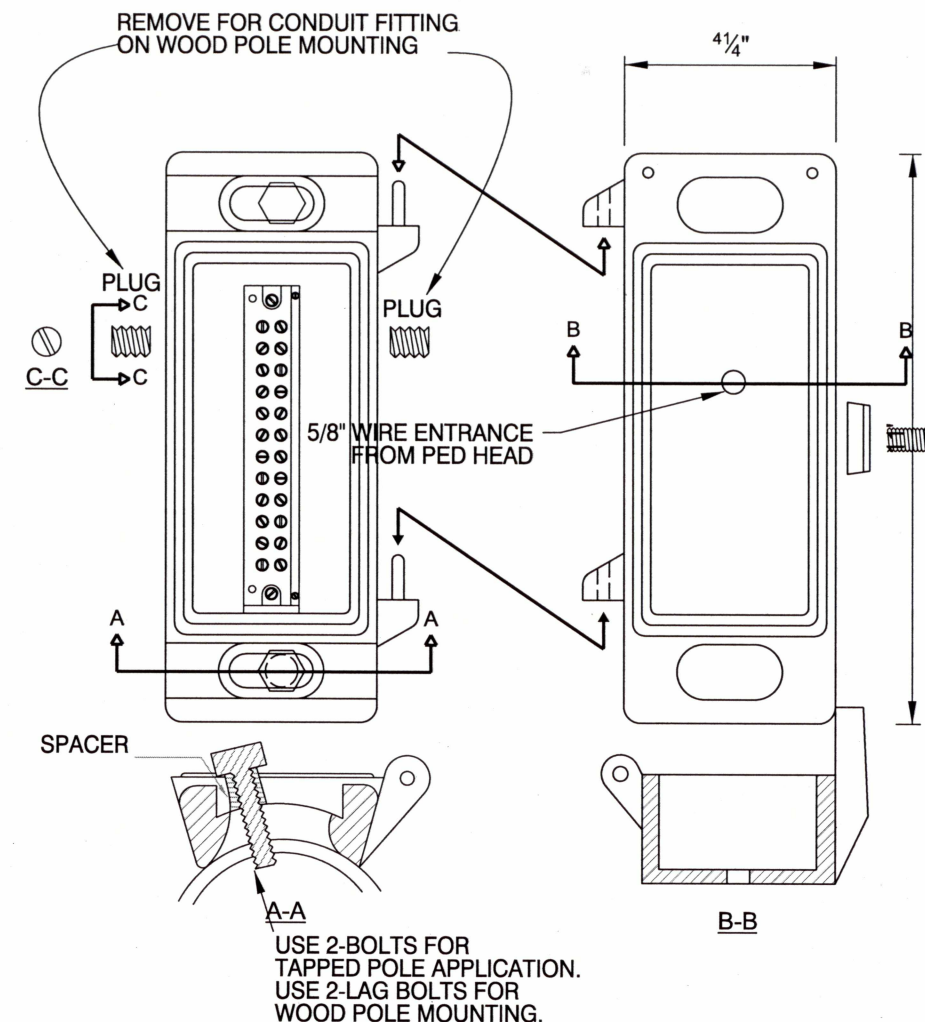
NOTE: DETERMINE
PLACEMENT FROM
SIGNAL PLAN

ELEVATION



PLAN

**PEDESTRIAN SIGNAL ON WOOD
POLE WITH CLAM SHELL MOUNT**



**CLAM SHELL MOUNTING DETAIL
FOR PEDESTRIAN SIGNAL**

NOT TO SCALE

The selection and use of this
Standard Drawing, while
designed in accordance
with generally accepted
engineering principles and
practices, is the sole
responsibility of the user.

Note:
All material and workmanship shall be
in accordance with the City of Portland
Standard Construction Specifications.



BUREAU OF TRANSPORTATION
CITY OF PORTLAND, OREGON

Steve Toenn
Chief Engineer

Standard Drawing Title

**PEDESTRIAN SIGNAL
MOUNTING ON
STEEL AND WOOD POLES**

Effective Date: 03-21-12

Calc. Book No.:

Baseline Report Date:

Standard Drawing No.

P-622