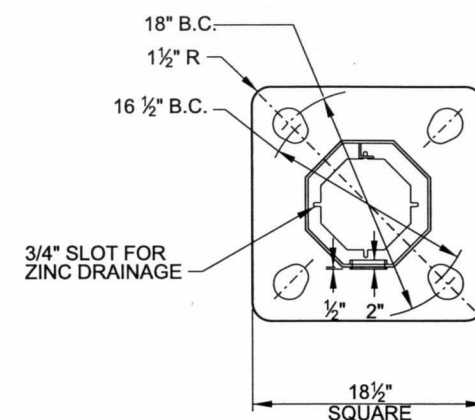
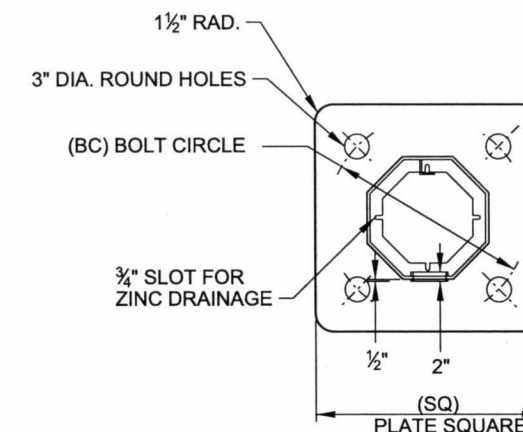


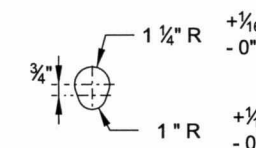
POLE TYPE	BASE PLATE TYPE	(SQ)	(BC)	(BT)
TYPE 1	200	18.5"	18.0"	2.0"
TYPE 2	201 A	21.5"	20.0"	2.5"
TYPE 3	201 B	22.5"	22.5"	2.5"



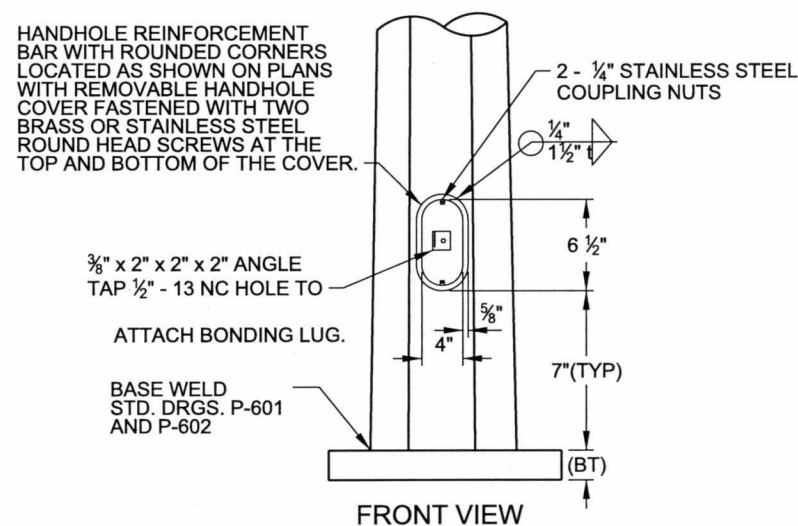
TOP VIEW
TYPE 200 BASE PLATE



TOP VIEW
TYPE 201 A & 201 B
BASE PLATE



HOLE DETAIL
TYPE 200 BASE PLATE



MAST ARM POLE BASE PLATE DETAILS

NOT TO SCALE

The selection and use of this Standard Drawing, while designed in accordance with generally accepted engineering principles and practices, is the sole responsibility of the user.

BUREAU OF TRANSPORTATION
CITY OF PORTLAND, OREGON
Joe Tomlin
Chief Engineer

Standard Drawing Title

MAST ARM POLE
BASE PLATE DETAILS

Note:
All material and workmanship shall be in accordance with the City of Portland Standard Construction Specifications.

Effective Date: 10-10-2013

Calc. Book No.:

Baseline Report Date:

Standard Drawing No.

P-604(B)