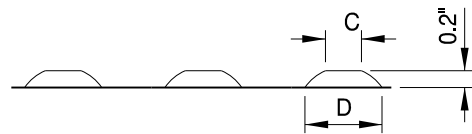
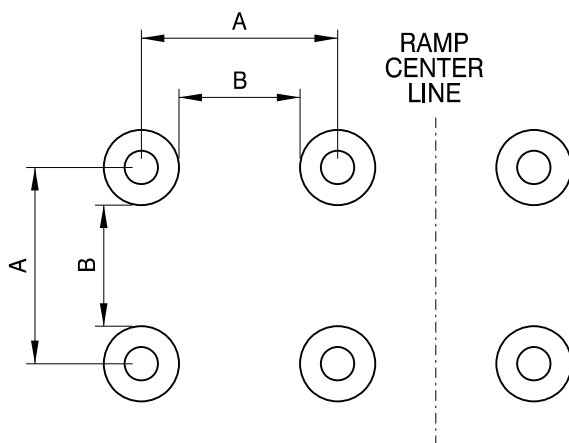


File name: U:\usoft\port\OGN\CITY OF PORTLAND - STANDARD DRAWINGS\SECTION DIVISIONS\3-STREETS\MICROSTATION\STD DRAWING NO P-550\PLOT\_SHT\_P-550.dgn  
 Plot Date: 9/12/2022 11:30:51 AM



	MIN.	MAX.
A	1.6"	2.4"
B	0.65"	1.5"
C	50% TO 65% of D	
D	0.9"	1.4"

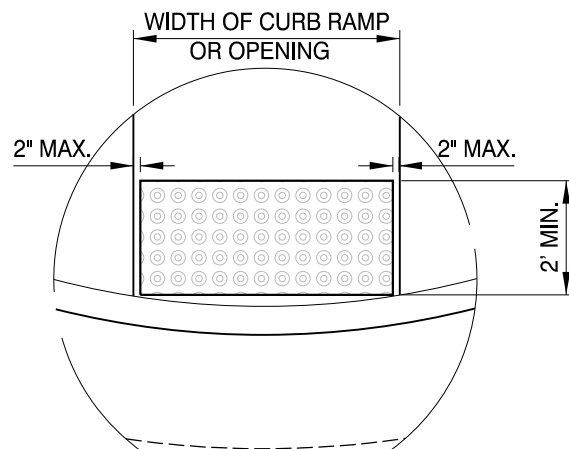


**DETECTABLE WARNING TRUNCATED DOMES PATTERN**

N.T.S.

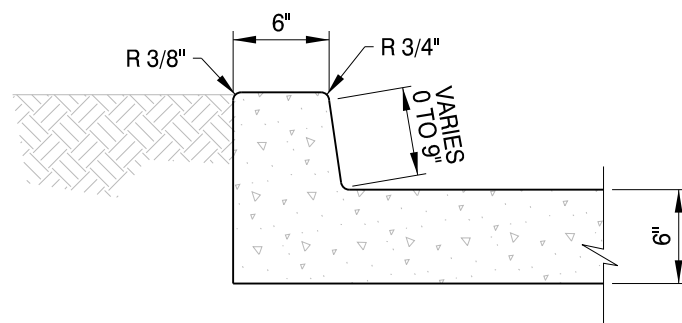
**NOTES:**

1. DETECTABLE WARNINGS SHALL BE PROVIDED AT CURB RAMPS AND AT LOCATIONS WHERE THE SIDEWALK AND ROADWAY ARE FLUSH.
2. THE DETECTABLE WARNING SURFACE SHALL HAVE A TRUNCATED DOME PATTERN AS SHOWN AND EXTEND 2' DEEP MEASURED FROM THE BACK OF THE CURB.
3. DETECTABLE WARNINGS SHALL MATCH THE WIDTH OF THE RAMP RUN OR THE OPENING WHERE THE SIDEWALK AND ROADWAY ARE FLUSH.
4. DETECTABLE WARNING COLOR SHALL BE "FEDERAL SAFETY YELLOW."
5. ANY ALTERATIONS TO THE DETECTABLE WARNINGS MUST BE MADE PER THE MANUFACTURER'S SPECIFICATIONS. LEAVE NO OPEN SPACE BETWEEN ADJACENT PANELS SO THAT DOME SPACING ADHERES TO THE DETAIL SHOWN.
6. USE CAST-IN-PLACE DETECTABLE WARNINGS UNLESS OTHERWISE SHOWN.




**DETECTABLE WARNING SURFACE DETAIL**

N.T.S.



**BACK OR SIDE CURB DETAIL**

N.T.S.

The selection and use of this Standard Drawing, while designed in accordance with generally accepted engineering principles and practices, is the sole responsibility of the user.	<b>PBOT PORTLAND BUREAU OF TRANSPORTATION</b>  City Engineer	
	Standard Drawing Title <p style="text-align: center;"><b>MISC. CURB RAMP DETAILS</b></p>	
Note: All material and workmanship shall be in accordance with the City of Portland Standard Construction Specifications.	Effective Date: 06/15/2022	Standard Drawing No. <p style="text-align: center;"><b>P-550</b></p>
	Calc. Book No.: N/A	
	Std. Drg. Report Date: 03/29/2022	