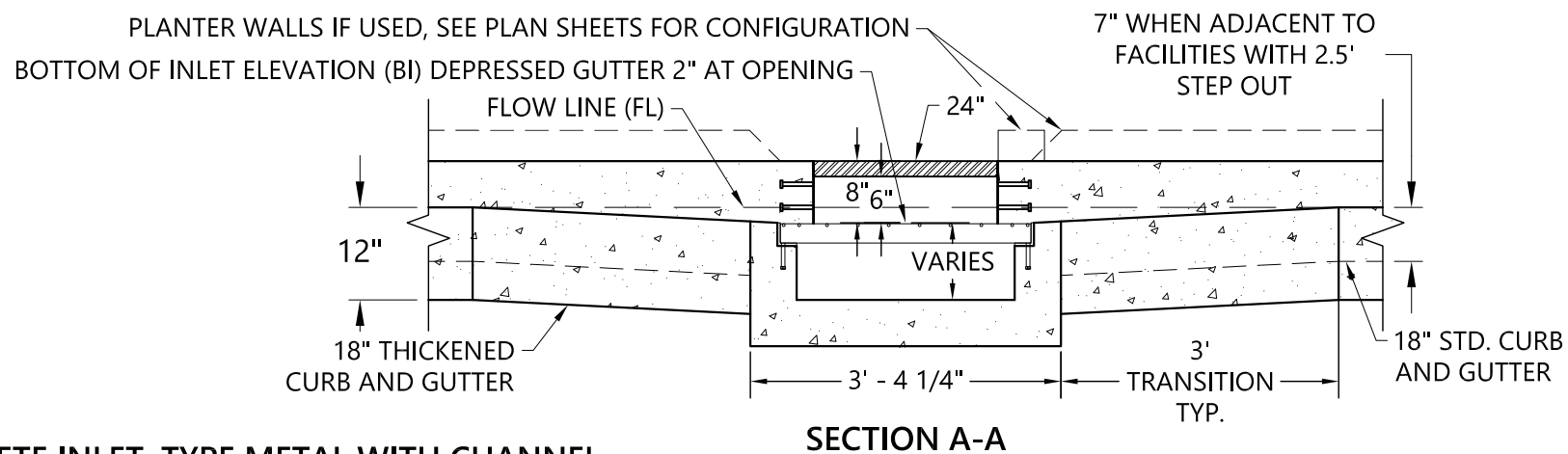
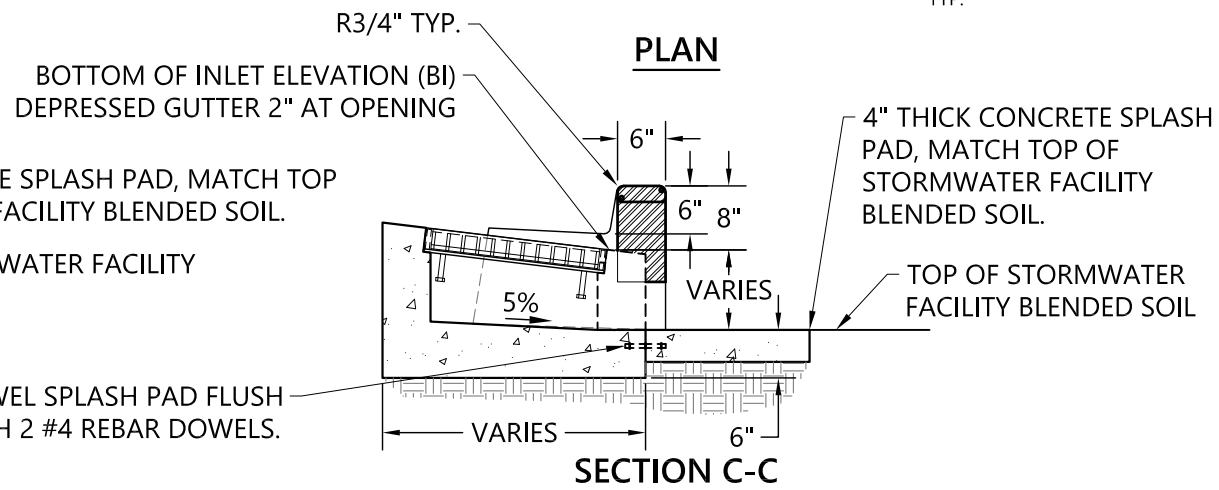
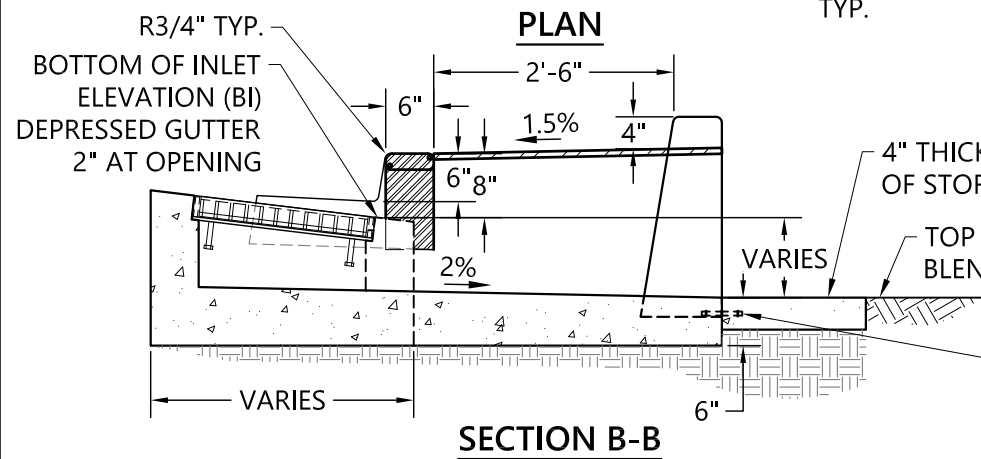
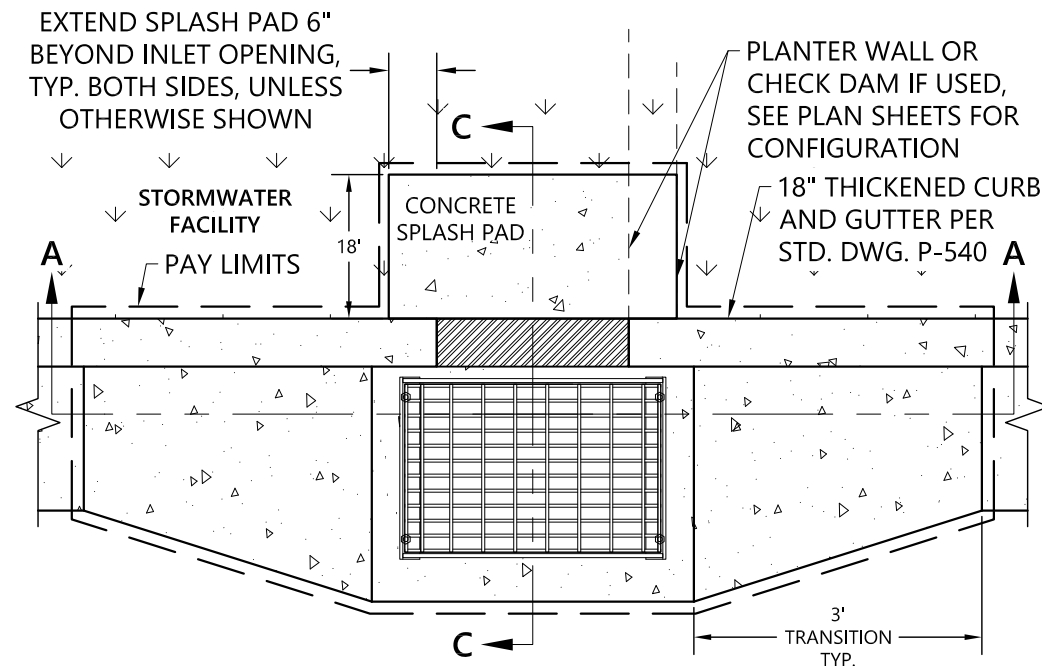
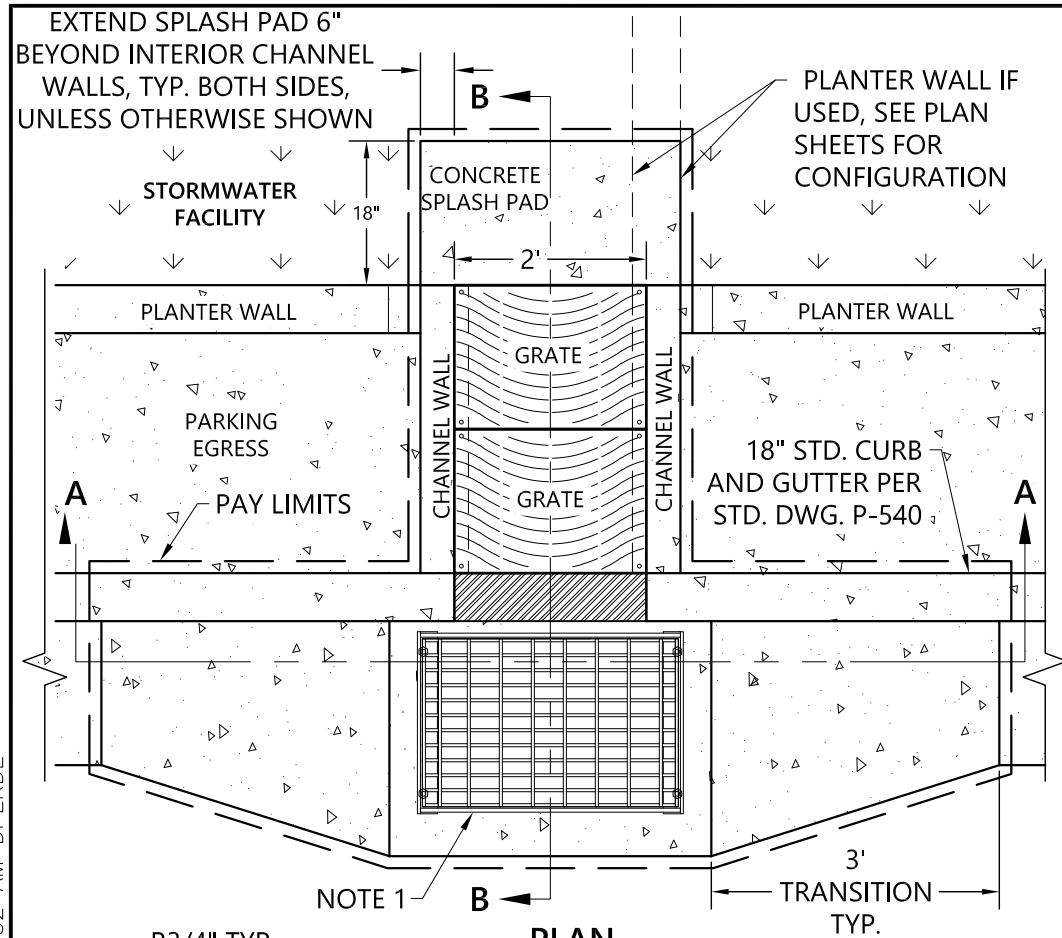


P-305_CONCRETE_INLET_TYPE_METAL_WITH_G-1_OR_G-2_GRATE.DWG 8/17/23 11:32 AM DPERDE




**CONCRETE INLET, TYPE METAL WITH CHANNEL
(2.5 FT. STEP OUT)**
NOT TO SCALE

SECTION A-A

CONCRETE INLET, TYPE METAL
NOT TO SCALE

NOTES:

1. REFER TO ODOT STANDARD DRAWINGS RD363, RD364 AND RD365 FOR ADDITIONAL INFORMATION ON G-1/G-2 INLETS.
2. REFER TO CITY OF PORTLAND STANDARD DRAWING P-302 FOR METAL INLET ASSEMBLY.
3. G-2 INLET MAY BE USED FOR FACILITIES NOT ADJACENT TO BIKE LANES.
4. SMOOTH TRANSITION TO ENSURE WATER FLOWS INTO GUTTER.
5. CHANNEL GRATE AND FRAME:
 - 5.1. OLYMPIC FOUNDRY INC. SM50 18"x24" "TWS" ADA GRATE AND FRAME, OR APPROVED EQUAL.
 - 5.2. CAST IRON WITH NATURAL FINISH.
 - 5.3. RATED FOR H-20 LOADING
 - 5.4. ADA COMPLIANT.
6. PAY AREA INCLUDES ALL CONCRETE ITEMS SHOWN, INCLUDING SPLASH PADS, INLET AND CHANNEL GRATE, FRAME, AND METAL INLET ASSEMBLY.

<p>The selection and use of this Standard Drawing, while designed in accordance with generally accepted engineering principles and practices, is the sole responsibility of the user.</p> <p>Note: All material and workmanship shall be in accordance with the City of Portland Standard Construction Specifications.</p>	 <p>Bureau of Environmental Services CITY OF PORTLAND, OREGON</p> <p>_____ Chief Engineer</p>	
	<p>STANDARD DRAWING Title</p> <p>CONCRETE INLET, TYPE METAL WITH OR WITHOUT CHANNEL, WITH G-1 OR G-2 GRATE</p>	
	<p>Effective Date: 09-01-23</p> <p>Calc. Book No.: N/A</p> <p>Baseline Report Date: N/A</p>	<p>Standard Drawing No.</p> <p>P-305</p>