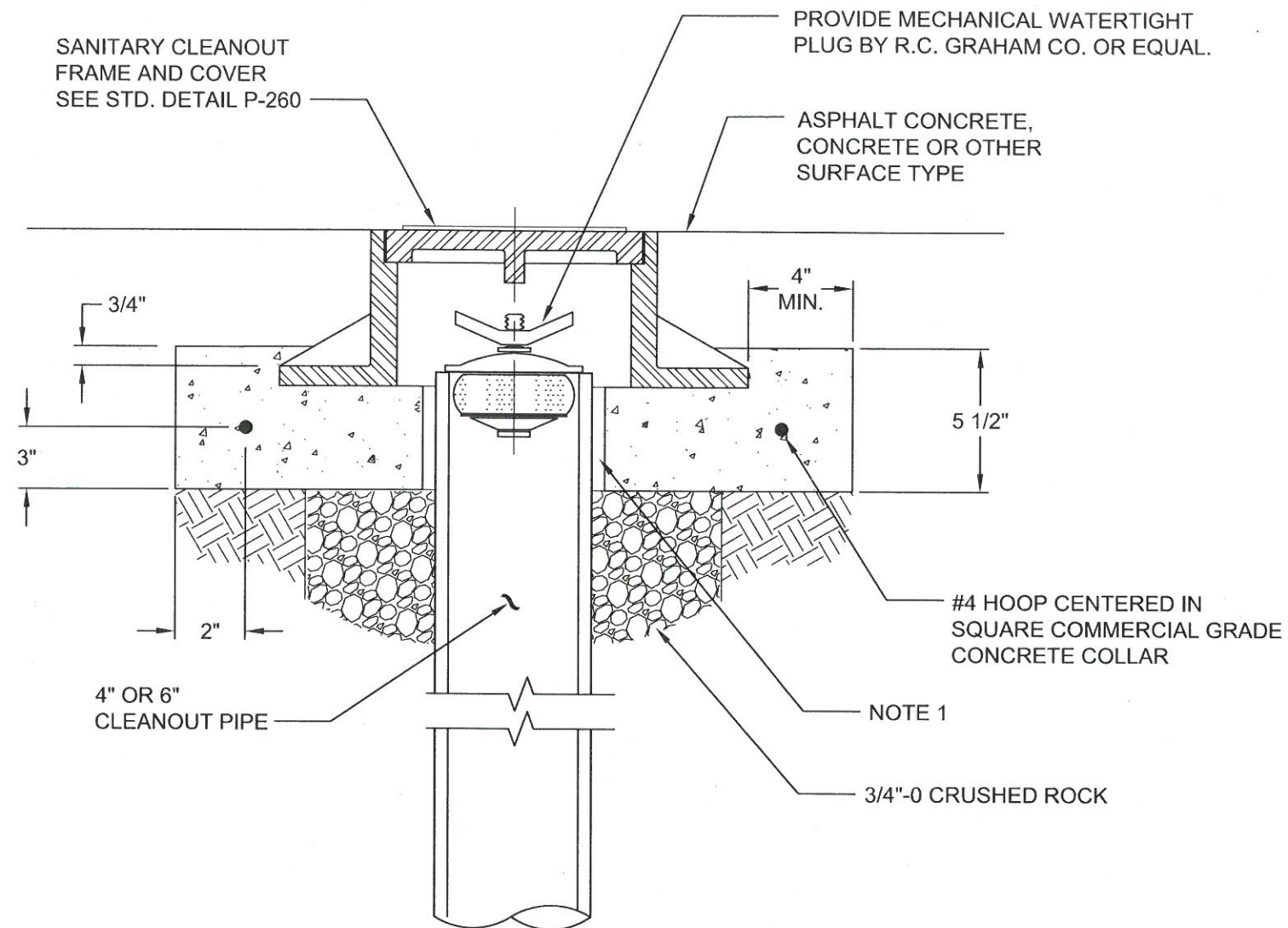


P-259\_SANITARY\_CLEANOUT\_FF-ME\_FOUNID-TICIDWAG 12/19/18 3:07 PM PICKS



N.T.S.

**NOTES:**

1. PROVIDE 1/2" GAP (MAXIMUM) BETWEEN CLEANOUT PIPE AND CONCRETE COLLAR.
2. WHEN CLEANOUT IS LOCATED IN NON-TRAFFIC BEARING AREA DELETE CONCRETE COLLAR. EMBED COVER IN FINISHED SURFACE MATERIAL AS DIRECTED.

The selection and use of this Standard Detail, while designed in accordance with generally accepted engineering principles and practices, is the sole responsibility of the user.



Bureau of Environmental Services  
CITY OF PORTLAND, OREGON

*Willy Ryan*  
Chief Engineer

Standard Detail Title

Sanitary Cleanout  
Frame Foundation

Note:  
All material and workmanship shall be in accordance with the City of Portland Standard Construction Specifications.

Effective Date: 06-22-12

Calc. Book No.: N/A

Baseline Report Date: N/A

Standard Detail No.

P-259