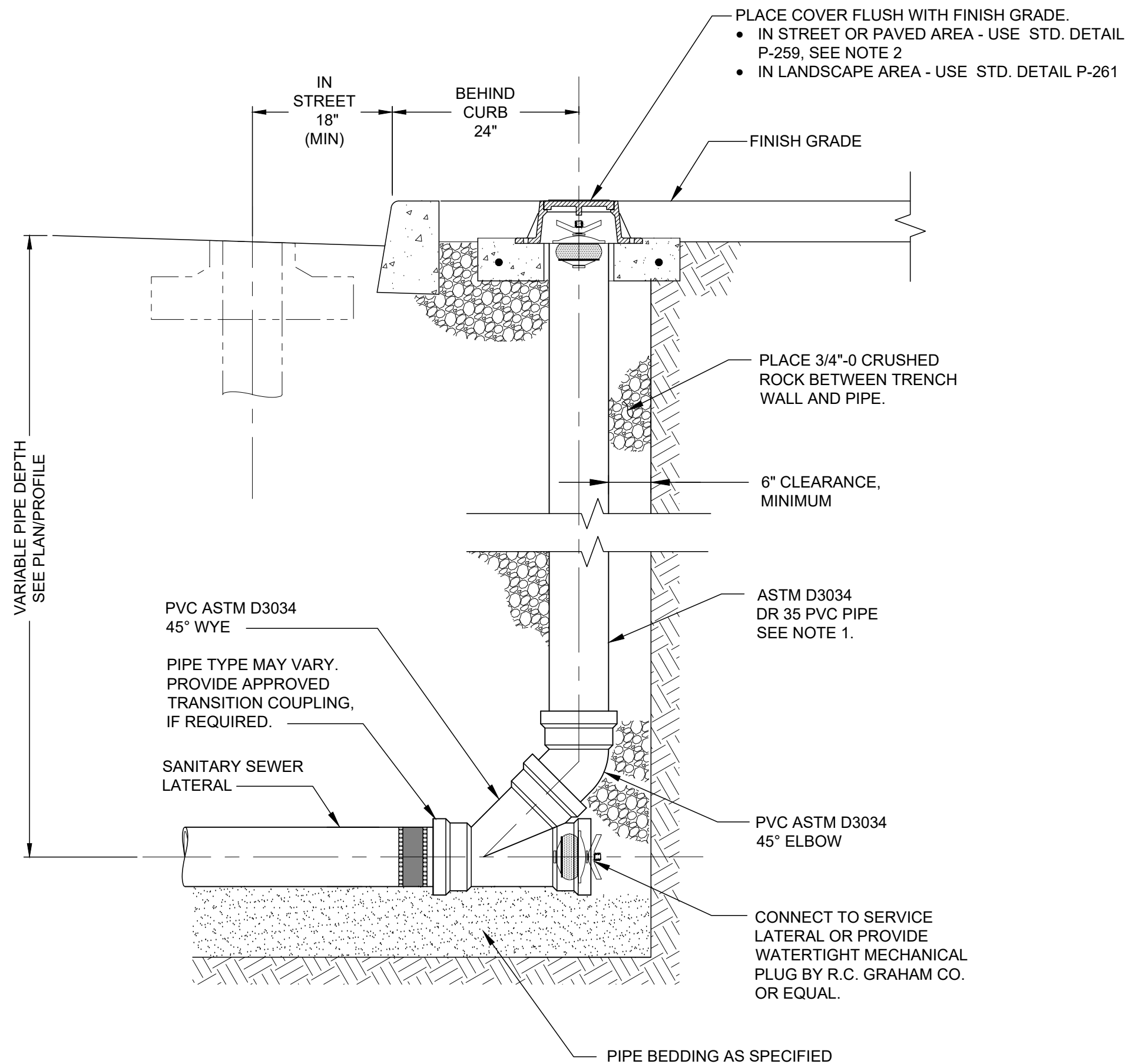



P-257\_SANITARY\_SEWER\_LATERAL\_CLEANOUT.DWG 1/16/25 1:43 PM SPEREZ



**NOTES:**

1. MINIMUM 6" DIA. CLEANOUT AND LATERAL REQUIRED IN RIGHT-OF-WAY
2. CLEANOUTS SHALL NOT BE LOCATED IN BIKE PATHS, PEDESTRIAN ZONES NOR IN CURBSIDE BUS OR TRUCK LOADING ZONES.
3. POUR COMMERCIAL GRADE CONCRETE COLLAR AGAINST CURB WHEN DISTANCE BETWEEN CURB AND COLLAR IS LESS THAN 6 INCHES.

<p>The selection and use of this Standard Detail, while designed in accordance with generally accepted engineering principles and practices, is the sole responsibility of the user.</p>	 <p>Bureau of Environmental Services CITY OF PORTLAND, OREGON</p> <p>Chief Engineer</p>	<p>Standard Detail Title</p> <p><b>Sanitary Sewer Lateral Cleanout</b></p>
	<p>Effective Date: 01-15-2025</p> <p>Calc. Book No.: N/A</p> <p>Baseline Report Date: N/A</p>	

Note:  
All material and workmanship shall be in accordance with the City of Portland Standard Construction Specifications.