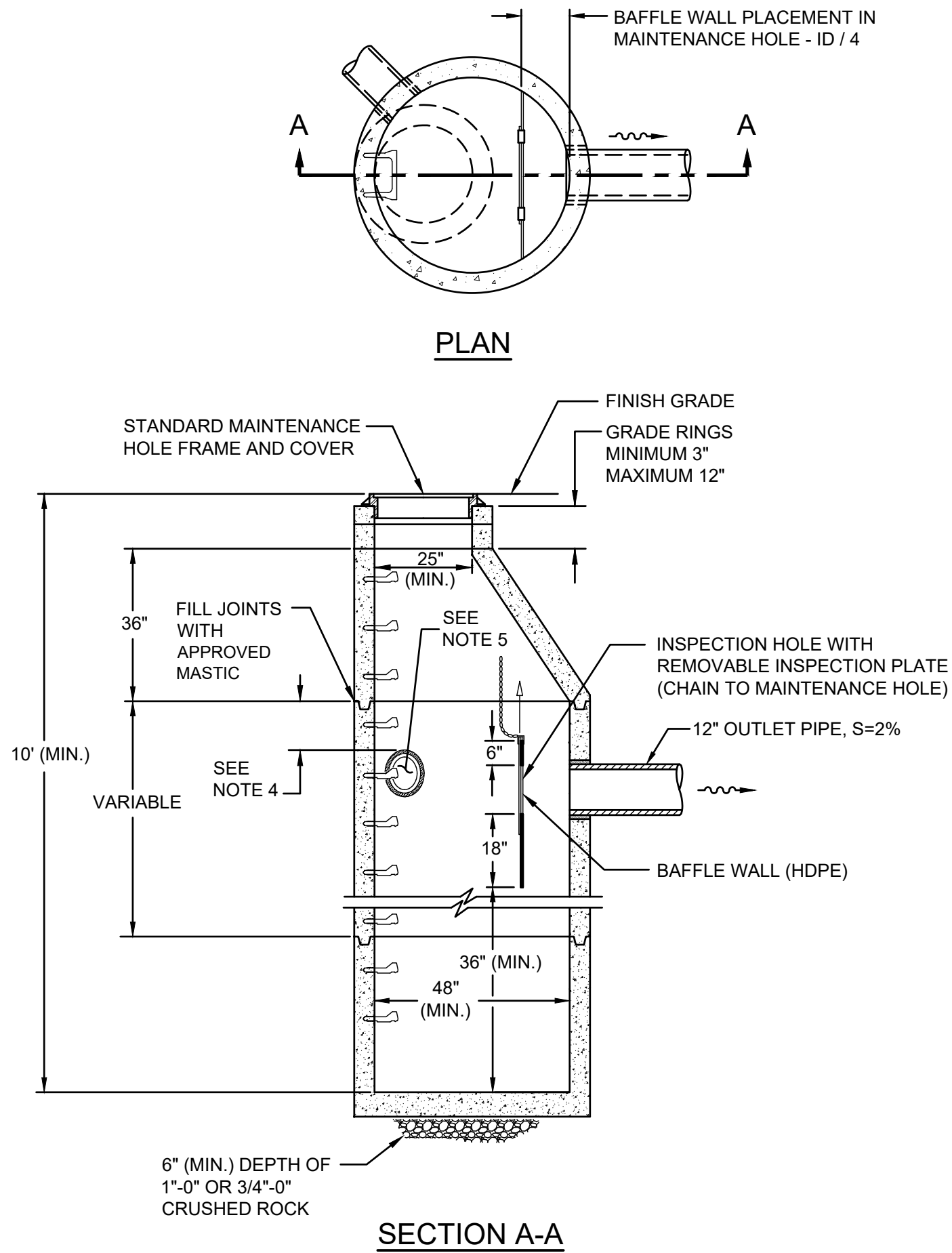



P-162\_SED\_MAINTENANCE\_HOLE\_BAFFLE.DWG 3/21/23 9:39 AM DPERDE



**NOTES:**

1. ALL PRECAST SECTIONS SHALL CONFORM TO THE REQUIREMENTS OF THE CITY OF PORTLAND MANUFACTURING STANDARDS FOR PRECAST CONCRETE PRODUCTS (MSPCP), AS REVISED.
2. MAINTENANCE HOLE STEPS – REFER TO THE STANDARD DETAIL P-168.
3. PROVIDE A FLEXIBLE JOINT FOR ALL CONNECTED PIPES:
  - RIGID PIPE < 36 INCHES – 18 INCHES (MAX.) FROM OUTSIDE WALL
  - FLEXIBLE PIPE – 18 INCHES (MAX.) FROM THE OUTSIDE WALL UNLESS A FLEXIBLE JOINT FITTING IS INSTALLED AND ACCEPTED.
4. PROVIDE 12 INCHES (MIN.) OF SEPARATION BETWEEN A SECTION JOINT AND THE OUTER EDGE OF ANY OPENING.
5. LOCATE INVERT OF ANY PIPE 6 INCHES (MIN.) ABOVE THE OUTLET PIPE INVERT.
6. BAFFLE WALL AND THE REMOVABLE INSPECTION PLATE MATERIAL SHALL BE 1/2 INCH THICK HIGH DENSITY POLYETHYLENE (HDPE) FLAT STOCK. SECURE BAFFLE WALL TO MAINTENANCE HOLE WALL WITH SIX STAINLESS STEEL BRACKETS (MIN).
7. PROVIDE A 12 INCH DIA. INSPECTION HOLE CENTERED IN THE BAFFLE WALL. CHAIN REMOVABLE PLATE TO MAINTENANCE HOLE WALL.

<p>The selection and use of this Standard Detail, while designed in accordance with generally accepted engineering principles and practices, is the sole responsibility of the user.</p>	 Bureau of Environmental Services CITY OF PORTLAND, OREGON _____ Chief Engineer	Standard Detail Title  <b>Sedimentation Maintenance Hole with Baffle</b>
	Effective Date: 04-01-23 Calc. Book No.: N/A Baseline Report Date: N/A	Standard Detail No.  <b>P-162</b>

Note:  
All material and workmanship shall be in accordance with the City of Portland Standard Construction Specifications.