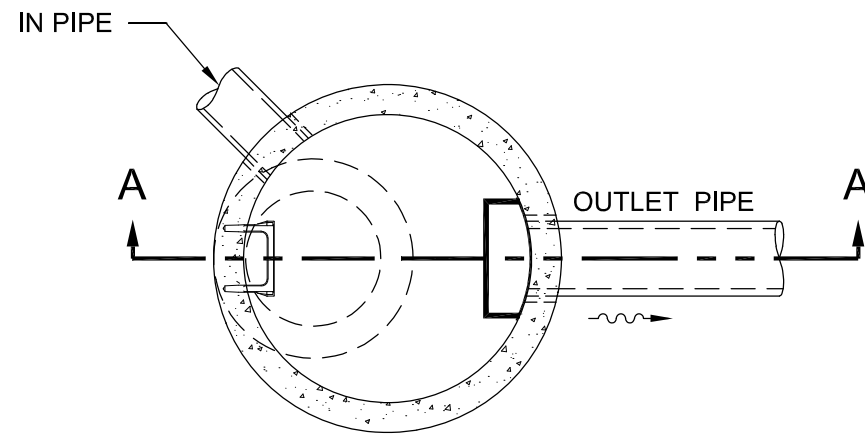


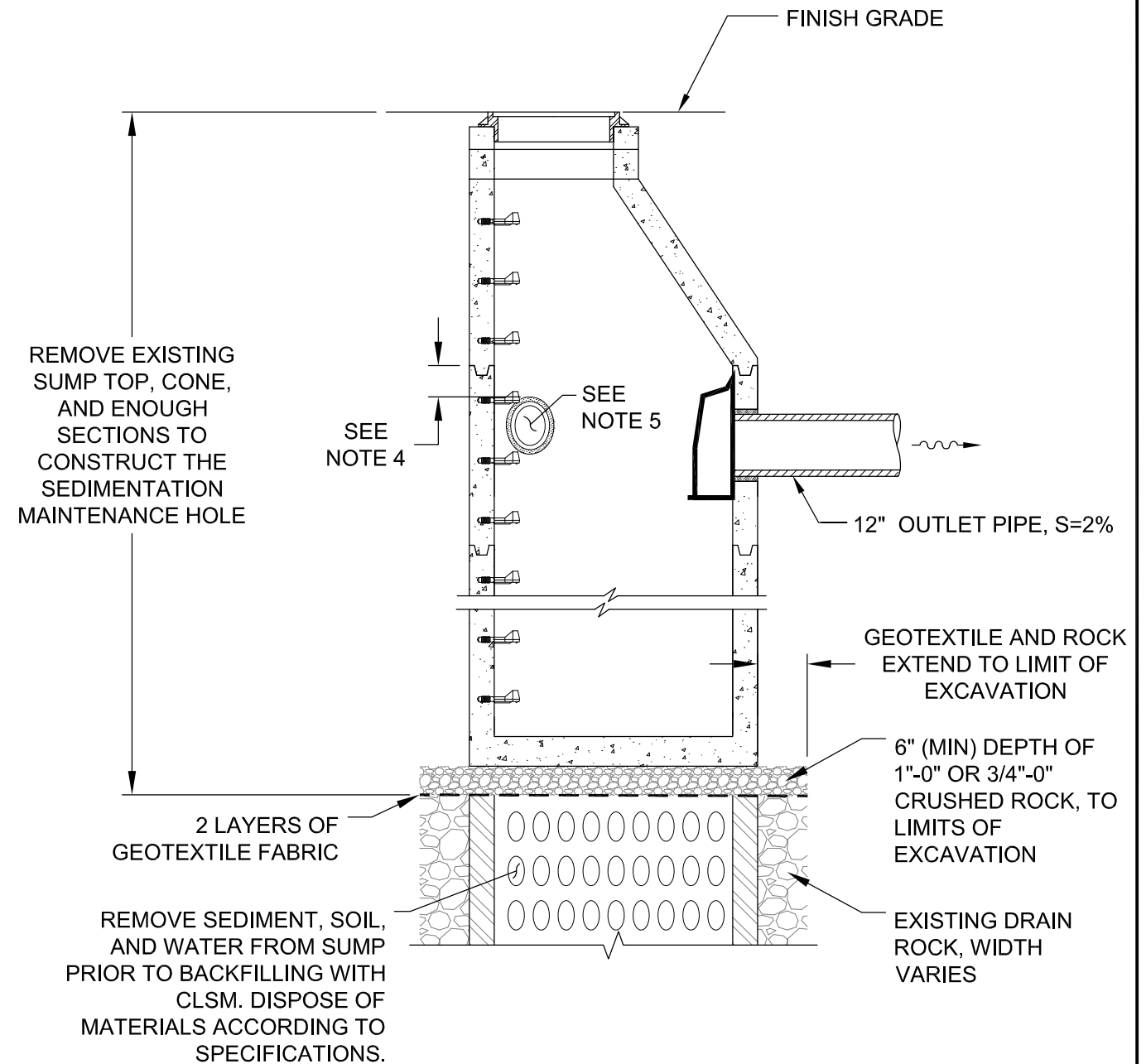
SECTION A-A



PLAN

NOTES:

1. ALL PRECAST SECTIONS SHALL CONFORM TO THE REQUIREMENTS OF THE CITY OF PORTLAND MANUFACTURING STANDARDS FOR PRECAST CONCRETE PRODUCTS (MSPCP), AS REVISED.
2. MAINTENANCE HOLE STEPS – REFER TO THE STANDARD DETAIL P-168.
3. PROVIDE A FLEXIBLE JOINT FOR ALL CONNECTED PIPES:
 - RIGID PIPE < 36 INCHES – 18 INCHES (MAX.) FROM OUTSIDE WALL
 - FLEXIBLE PIPE – 18 INCHES (MAX.) FROM THE OUTSIDE WALL UNLESS A FLEXIBLE JOINT FITTING IS INSTALLED AND ACCEPTED.
4. PROVIDE 6 INCHES (MIN.) OF SEPARATION BETWEEN A SECTION JOINT AND THE OUTER EDGE OF ANY OPENING.
5. LOCATE INVERT OF ANY PIPE 6 INCHES (MIN.) ABOVE THE OUTLET PIPE INVERT



IN LOCATION OF EXISTING SUMP

<p>The selection and use of this Standard Detail, while designed in accordance with generally accepted engineering principles and practices, is the sole responsibility of the user.</p>	<p>Bureau of Environmental Services CITY OF PORTLAND, OREGON William Ryan Digitally signed by William Ryan Date: 2020.08.31 13:48:20 -0700 Chief Engineer</p>	
	<p>Standard Detail Title</p> <p>Sedimentation Maintenance Hole and Sedimentation Maintenance Hole in Location of Existing Sump</p>	
	<p>Effective Date: 06-15-20</p>	<p>Standard Detail No.</p> <p>P-161</p>
	<p>Calc. Book No.: N/A</p> <p>Baseline Report Date: N/A</p>	

Note:
All material and workmanship shall be in accordance with the City of Portland Standard Construction Specifications.