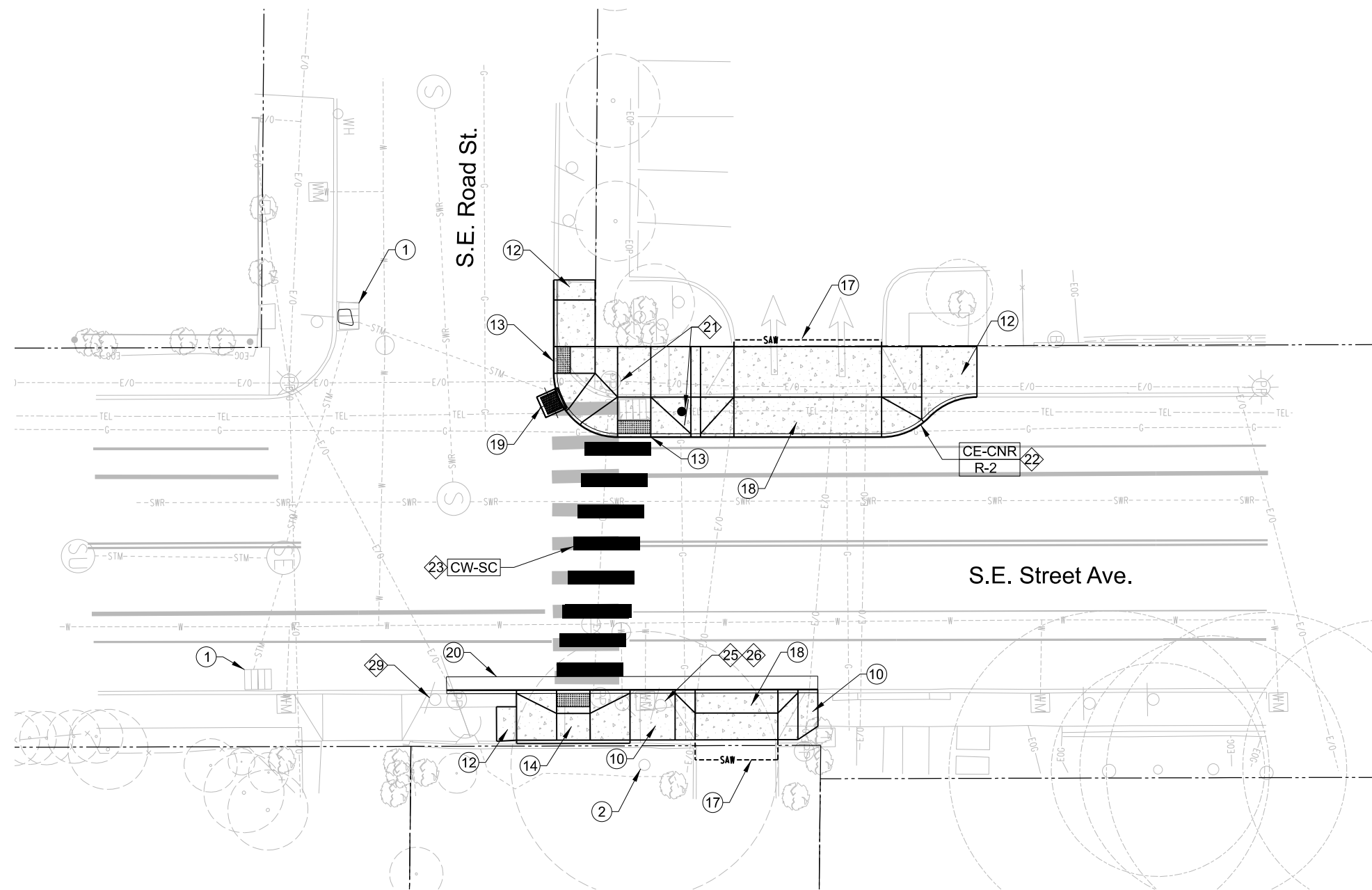


Plot Date: 11/14/2022 2:40:45 PM Filename: S:_ll\Design\Safe_Routes to Schools\T00779 - SE 45th & Evergreen\CAD\SH02 STREET PLAN\Civil_Traffic_Combined.Example.dgn

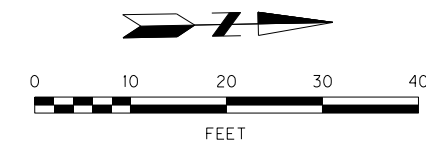


○ Construction Notes

- 1 Install inlet protection -2. See Std. Drg. No. RD1010.
- 2 Save tree - 1.
- 10 Construct monolithic curb, gutter and sidewalk (4 in. thick). See Std. Drg. No. P-551. Use 24" curb and gutter (2-foot gutter pan) and match street cross slope per Std. Drg. No. P-540.
- 12 Construct monolithic curb and sidewalk or separated sidewalk (4 in. thick) where applicable. See Std. Drg. No. P-551.
- 13 Construct sidewalk ramp. See Std. Drg. No. P-548.
- 14 Construct midblock sidewalk ramp with 2-foot gutter pan. See Std. Drg. No. P-547.
- 17 Construct driveway connection. See Std. Drg. No. P-536.
- 18 Construct driveway. See Std. Drg. No. P-528. Construct 2-foot gutter pan where shown.
- 19 Construct Type G-2 Inlet using existing inlet lead. See Std. Drg. No RD366. Rim elevation 255.34.
- 20 Construct 24" curb and gutter with 2-foot gutter pan. See Std. Drg. No. P-540.

◇ Signing and Striping Notes

- 21 Relocate signs (School X-ing and Diagonal Arrow) from wood utility pole to new post with breakaway dome base. See Std. Drg. Nos. P-400, P-406, and P-410.
- 22 Construct yellow paint on top and face of curb with mono-directional Type 1 reflectors. See Curb Extension Detail on Std. Drg. No. P-434.
- 23 Modify existing staggered continental crosswalk to align with new ramps as shown (use paint as interim measure until crosswalk is replaced after SE 45th Avenue is repaved). See Std. Drg. No. P-435.
- 25 Remove and reinstall "bus zone no parking sign" on new post and breakaway dome base. See Std. Drg. Nos. P-400, P-406, and P-410.
- 26 Install new street name signs. See Std. Drg. Nos. P-412 and P-420. Block number for SE Evergreen Street is "6900".
- 29 Protect signs (School X-ing, Diagonal Arrow, and parking).



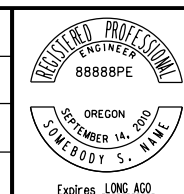
Signing and Striping Only

NO.	DATE	DESCRIPTION	APPD.
REVISION			

DESIGNED BY
X. Designer

CAD BY
X. CadDrafter

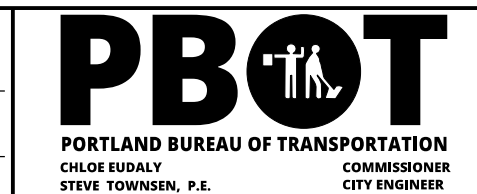
CHECKED BY
X. Engineer



APPROVALS:

EVA HUNTSINGER, ENGINEERING MANAGER, 84470PE

STEVE TOWNSEN, CITY ENGINEER, 51538PE

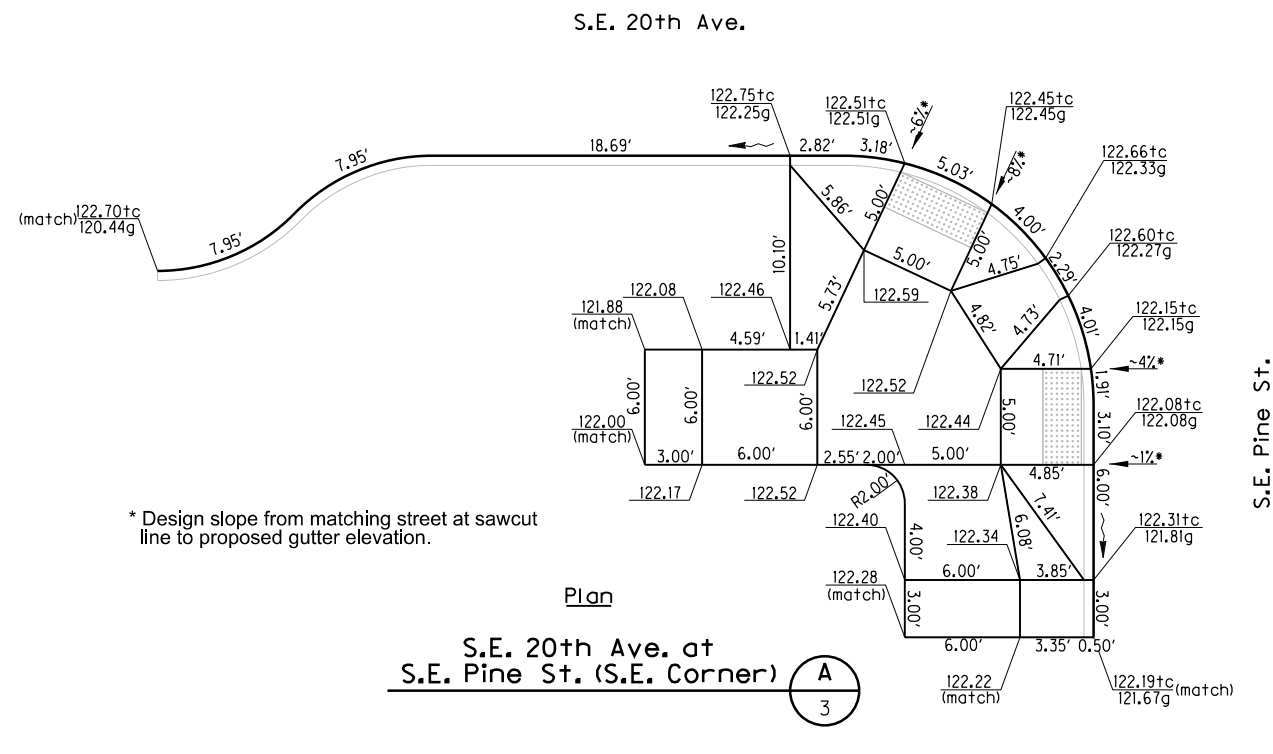


SE Street Ave. at SE Road St.
Safe Routes to Schools
Crossing Improvements

Street Plan

1/4 SECTION
3735 & 3736
PROJECT NO.
TOXXXX
SHEET NO.
2

Plot Date: 11/14/2022 2:37:04 PM Filename: S:_II_Design\Safe_Routes to Schools\T00778 - SE 20th Ave. and SE Pine St\CAD\PLAN_SHEETS\SH03 STREET PLAN\CIVIL_T\Office_Combined_Example.dgn

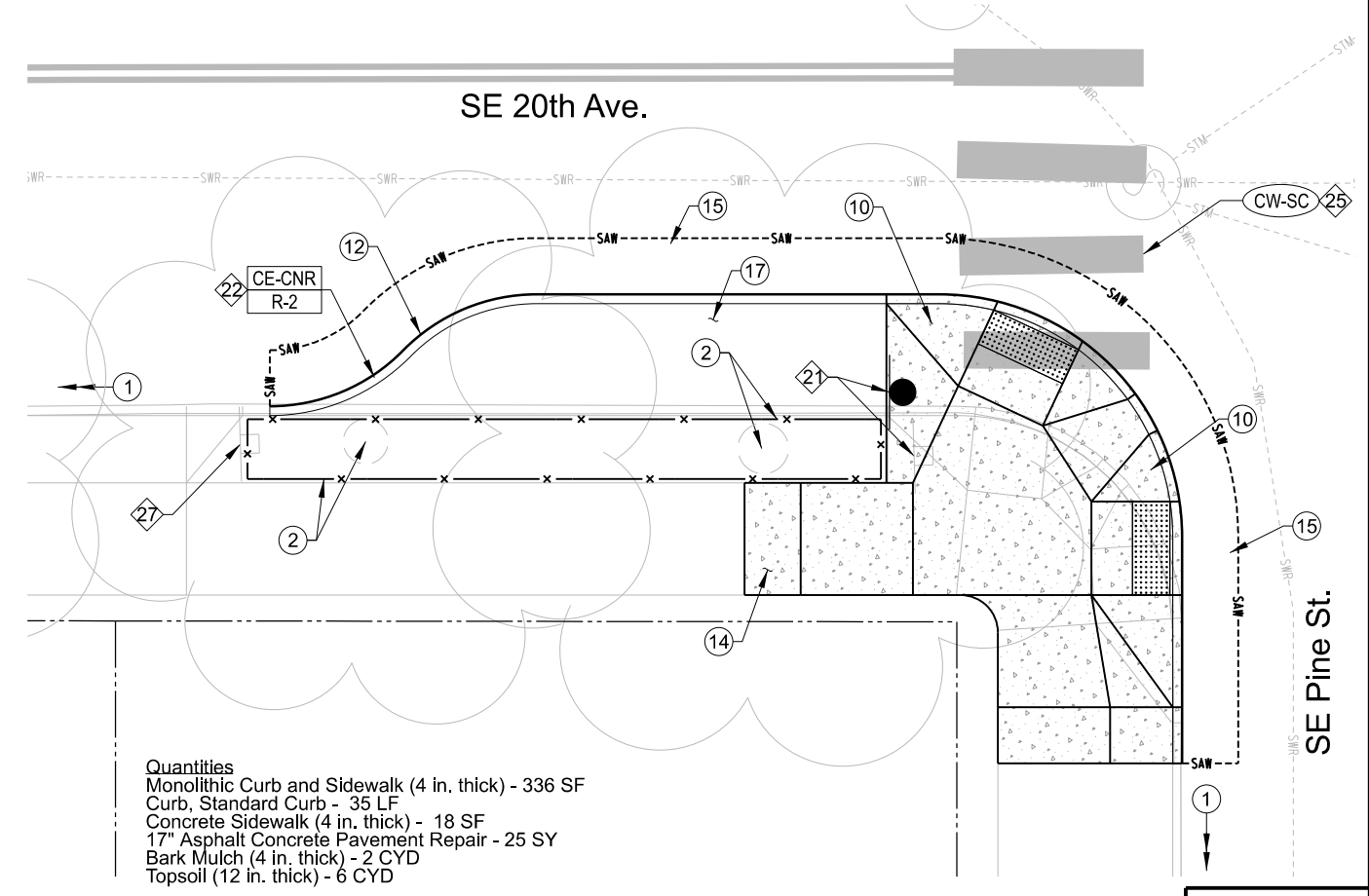


Construction Notes

- 1 Install Inlet Protection at downstream inlets (not shown on plans) - 2 EA. See Std. Drg. No. RD1010.
- 2 Protect trees with Temporary Type Orange Plastic Mesh Fence. Cut fencing or roll bottom edge under for a fence height of 3.5-ft - 74 LF.
- 10 Construct Monolithic Curb and Sidewalk (4 in. thick). See Std. Drg. P-551. See Std. Drg. P-548 for curb ramp details not shown.
- 12 Construct Curb, Standard Curb. See Std. Drg. P-540.
- 14 Construct Concrete Sidewalk (4 in. thick). See Std. Drg. P-551.
- 15 Construct 17" Asphalt Concrete Pavement Repair (9" of Level 3, PG 70-22 AC over 8" of aggregate base). See Std. Drg. P-506.
- 17 Place Bark Mulch (4 in. thick) over Topsoil to finished grade in new landscape area.

Signing and Striping Notes

- 21 Remove and Reinstall Existing Signs (Ped Crossing and Diagonal Arrow) to new Pipe Sign Support with Breakaway Sign Support Footing. See Std. Drg. P-400, P-406, and P-410 - 1 EA.
- 22 Construct yellow Curb Marking - Paint on top and face of curb with Mono-Directional White Type 1 Markers. See curb extension detail on Std. Drg. P-435 - 32 LF.
- 25 Repair continental crosswalk with white Pavement Bar, Type B-HS thermo-plastic. See Std. Drg. TM503 - 14 SF.
- 27 Remove no parking sign (with left arrow) - 1 EA.



WARNING
 IF THIS BAR DOES NOT MEASURE 1" THEN DRAWING IS NOT TO SCALE.

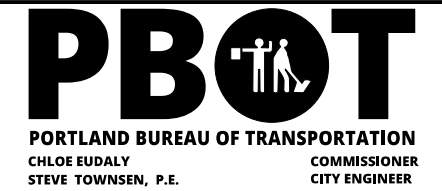
NO.	DATE	DESCRIPTION	APPD.
		REVISION	

DESIGNED BY <i>X. Designer</i>	DATE APPROVED Nov. 2022
CAD BY <i>X. CadDrafter</i>	PBOT REVIEWER <i>X. Reviewer</i>
CHECKED BY <i>X. Engineer</i>	PBOT SUPV. <i>X. Eng-Supv</i>

APPROVALS:

EVA HUNTSINGER, ENGINEERING MANAGER, 84470PE

STEVE TOWNSEN, CITY ENGINEER, 51538PE



SE Street Ave. at SE Road St.
 Safe Routes to Schools
 Crossing Improvements
**Street Plan, Profile,
 & Elevation Detail Plan**

1/4 SECTION
 3735 & 3736
 PROJECT NO.
 TOXXXX
 SHEET NO.
3