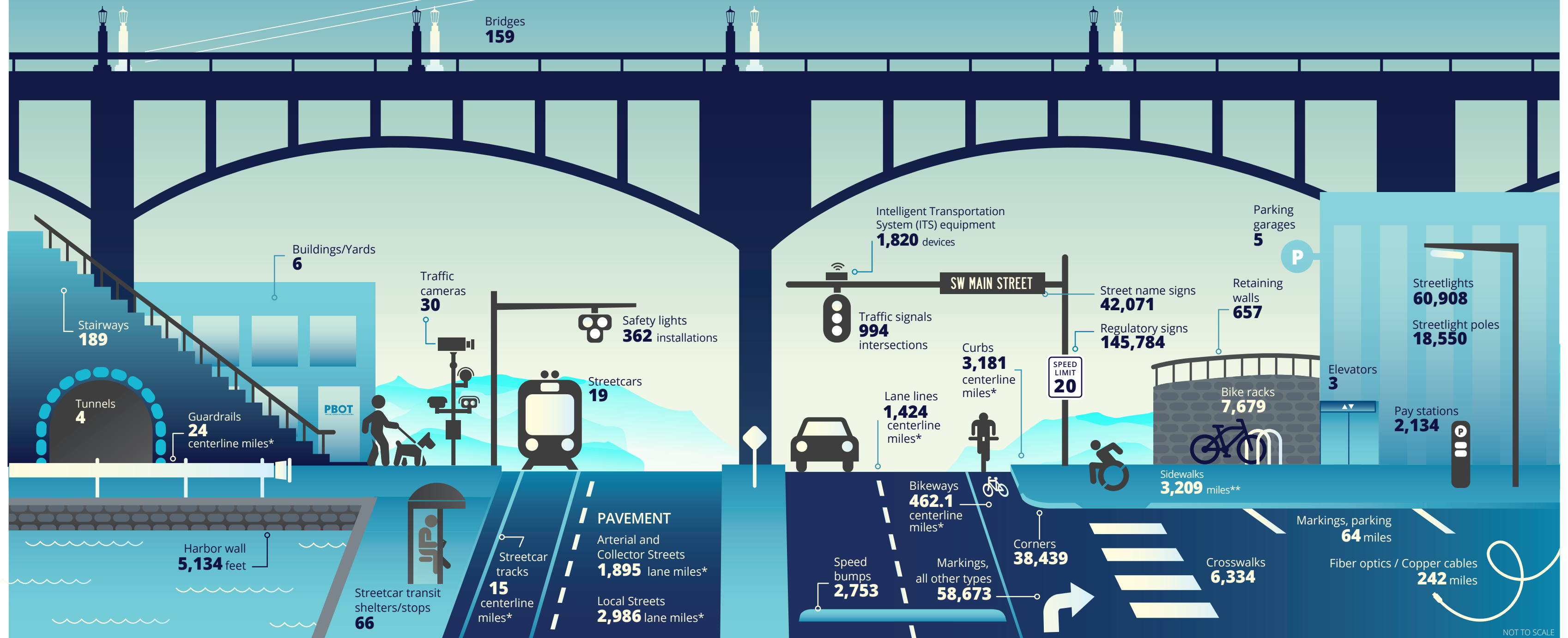


AT A GLANCE

Assets managed by the
Portland Bureau of Transportation (PBOT)
Updated July 2025



ASSETS AT A GLANCE

A \$21.9 billion transportation system has many elements. Some, like our streetcar and roads, are large-scale pieces of infrastructure valued in the hundreds of millions of dollars. Others, like our street signs or sidewalk corners, support a mobile and connected city in smaller, but no less vital ways. The variety of active assets PBOT is responsible for helps explain the wide-ranging and multifaceted nature of our work. We are proud of the fact that, by maintaining and operating these assets, we can contribute to the high quality of life in Portland. Note: this graphic does not include permanently closed assets or ones being decommissioned.

* Centerline miles refers to the length of the road, lane miles is a term for measuring pavement (1 lane mile = 1 mile of road x 1 standard lane width).

**Sidewalk mileage is a rough estimate of length based on typical sidewalk width of 4-6 feet.



PBOT
PORTLAND BUREAU OF TRANSPORTATION

NOT TO SCALE