

DISTRICT 4

Pavement Condition, 2024

The Portland Bureau of Transportation (PBOT) has responsibility to maintain 4,800 lane miles of pavement citywide. The replacement value for this pavement is approximately \$13.5B, making it the city's most valuable asset.

This district map displays the PBOT-maintained streets that are in poor or very poor condition. The map also includes these additional street maintenance categories:

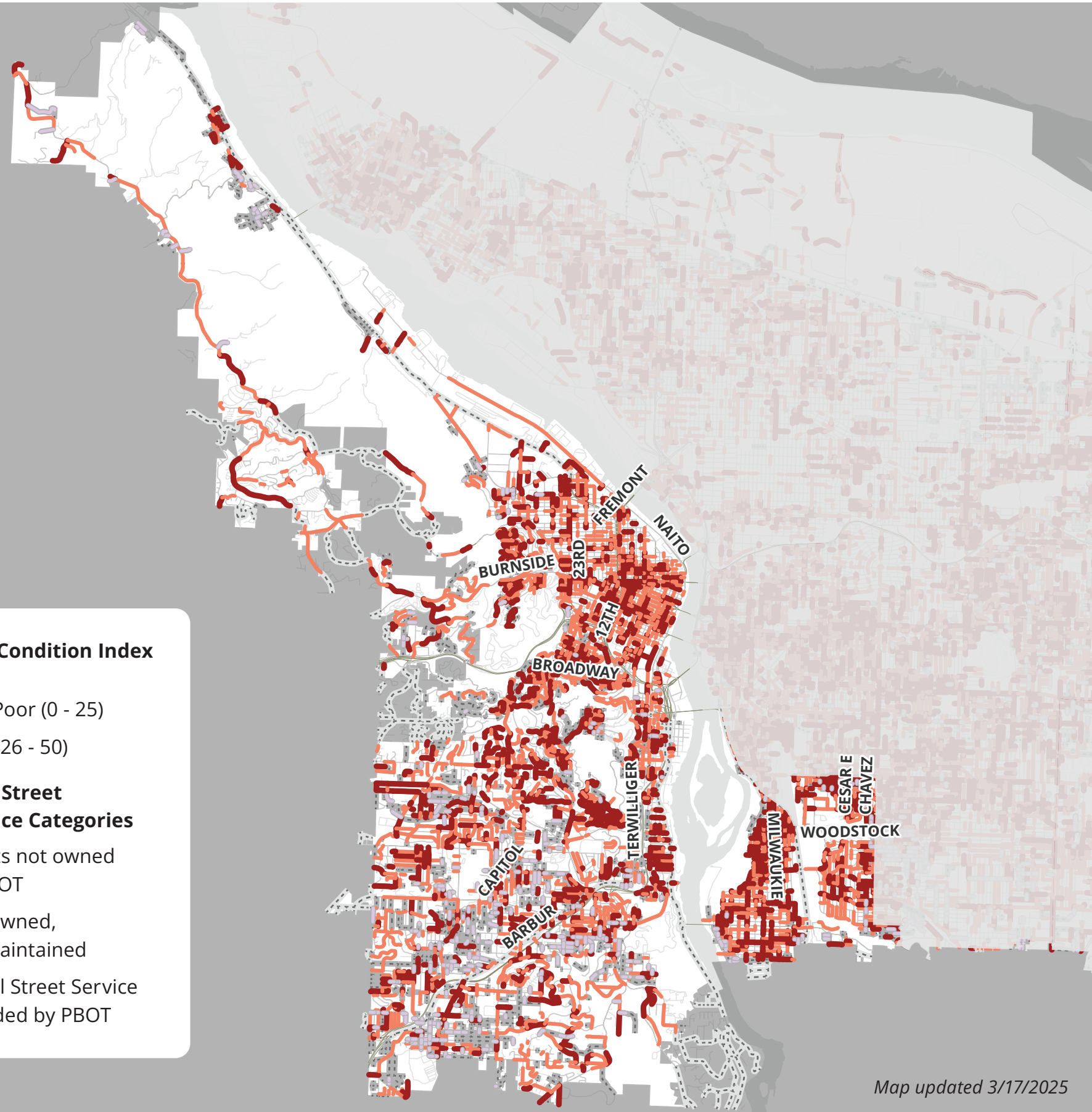
- » **Streets not owned by PBOT:** Within the city of Portland, there are streets owned and maintained by other city bureaus or other jurisdictions, such as the Oregon Department of Transportation (ODOT) and Multnomah County
- » **City-owned, not maintained:** These are city streets that the city assumes no responsibility for maintenance, construction or reconstruction
- » **Gravel streets:** Since 2019, PBOT has used Fixing Our Streets funds to provide Gravel Street Service, regrading unmaintained roads every 3 years to keep them passable.

District 4 Pavement Summary

	DISTRICT TOTAL MILES
Busy streets	376.1
Local streets	817.3
Streets not owned by PBOT	88
City-owned, not maintained	102
Gravel Streets	17.7

AVERAGE PAVEMENT CONDITION INDEX

48



Map updated 3/17/2025

Pavement Condition Index (PCI)

- Very Poor (0 - 25)
- Poor (26 - 50)

Additional Street Maintenance Categories

- Streets not owned by PBOT
- City-owned, not maintained
- Gravel Street Service provided by PBOT

