



CITY OF PORTLAND INDEPENDENT DISTRICTING COMMISSION WEB APPLICATION USER GUIDE

INTRODUCTION

The City of Portland Independent Districting Commission (IDC) is responsible for establishing four geographic districts for city council elections, helping implement a major transition for Portland's election system and form of government. The **Portland IDC Web App** is a map tool designed to inform the IDC and public of available spatial data to directly measure or integrate into the districting criteria denoted in the Portland City Charter (Section 3-110 District Plan Criteria), as well as view draft maps created by the IDC. This document provides instructions on how to use the web app. The web app, well as additional information and frequently asked questions, can be found online on the Portland IDC website.

<https://www.portland.gov/transition/districtcommission>

INSTRUCTIONS

Zoom to entire city

Zoom In/Out

Click here to toggle between base maps. Options include aerial imagery and human geography (light).

Click here to generate a screenshot of the map. Options include inclusion of the map legend and/or layer pop-up.

Click here to share the current app set up and view via social media or shareable link.

Click here to open a search bar. Enter an address or point of interest (e.g., school) to zoom to a specific area. Click the magnifying glass again to close the search bar.

Click to view a legend of the layers currently displayed on the map.

Click to select a pre-saved bookmark.

Click to display a list of groups of layers or individual layers with icons to turn visibility off and on in the map. Action shown below.

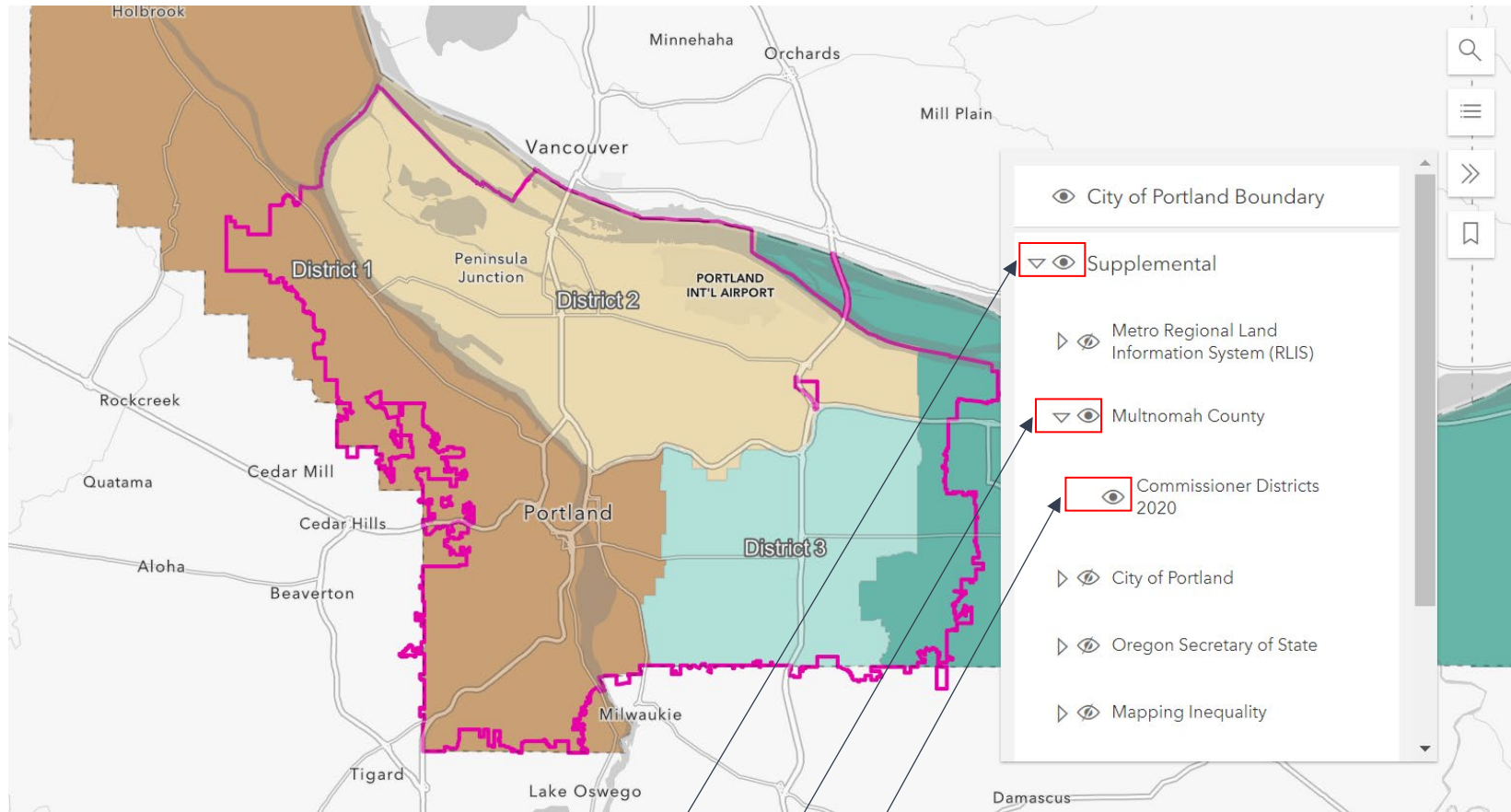
An open eye icon indicates the group of layers or individual layers are visible on the map. For example, the individual layer of the City of Portland Boundary is currently being displayed on the map (pink line).

A closed eye icon indicates the group of layers or individual layers are not visible on the map. For example, the only layer shown on the map currently is the City of Portland Boundary. No layers within the Supplemental or Census Bureau groups are displayed.

Powered by Esri

Layer List

The Layer List is organized into groups of layers by category (e.g., Supplemental and data source (e.g., Multnomah County)). The Layer List is hierarchical, so groups may contain more groups or one to multiple layers which can be displayed on the map (e.g., the Supplemental group contains multiple groups, such as Multnomah County and City of Portland). The Multnomah County group contains a single layer, Commissioner Districts 2020. Only by opening each eye icon in the related group(s) (boxes outlined in red below) can layers be viewed on the map. For instance, to view the Commissioner Districts 2020, the layer must be visible, as well as the Multnomah County group and Supplemental group.



Click on a group's eye icon to open the eye. Once open, click on the arrow to expand the list of (sub)groups and layers within that group. *The Supplemental group includes (sub)groups by data source, such as Metro Regional Land Information System & Multnomah County.*

Click on a (sub)group's eye icon to open the eye. Once open, click on the arrow to expand the list of layers within that group. *The Multnomah County (sub)group contains a single layer called Commissioner Districts 2020.*

Click on the layer's eye icon to open the eye. *Now the Commissioner Districts 2020 layer is displayed on the map.*