

**Monday, August 21**



# Independent District Commission

**Voter approved. Community centered. City delivered.**



**Portland  
Transition**



# Zoom Overview

- Meeting is being recorded and will be posted on the Commission’s website.
- We have Close Captioning available, American Sign Language and Spanish interpretation available.
- Commissioners, please change your chat setting to “Everyone”.
- Community members, you can submit questions or thoughts through the Q&A.

# Agenda

TIME	ACTIVITY
6:00 – 6:05 pm	<b>Welcome &amp; Committee Business</b> <ul style="list-style-type: none"><li>• Welcome and review agenda</li><li>• Approve Aug 9 meeting minutes.</li></ul>
6:05 – 6:35 pm	<b>Vote to Adopt District Plan</b> <ul style="list-style-type: none"><li>• Walk through plan components (map, numbering, legal description) (10 mins)</li><li>• Roll call vote to adopt district plan (10 minutes)</li><li>• Reflections (10 minutes)</li><li>• Formal adjournment of the Independent District Commission and end of Commissioners term.</li></ul>
5 minutes	<b>Break – 5 Minutes</b>
6:40 – 7:10 pm	<b>Transition Handoff</b> <ul style="list-style-type: none"><li>• Discuss lessons learned, community engagement, and voter education priorities with Government Transition Advisory Committee (GTAC).</li></ul>
7:10 – 7:25 pm	<b>Reflection &amp; Priorities</b> <ul style="list-style-type: none"><li>• Discuss reflections and priorities for future redistrict efforts.</li></ul>
7:25 – 7:55 pm	<b>Documenting the Process</b> <ul style="list-style-type: none"><li>• Continue last week’s discussion around final report, mapping rationales and answers to frequently asked questions..</li></ul>
7:55– 8:00 pm	<b>Next Steps</b> <ul style="list-style-type: none"><li>• Present on next steps</li></ul>
8:00pm	<b>Meeting adjourned</b>



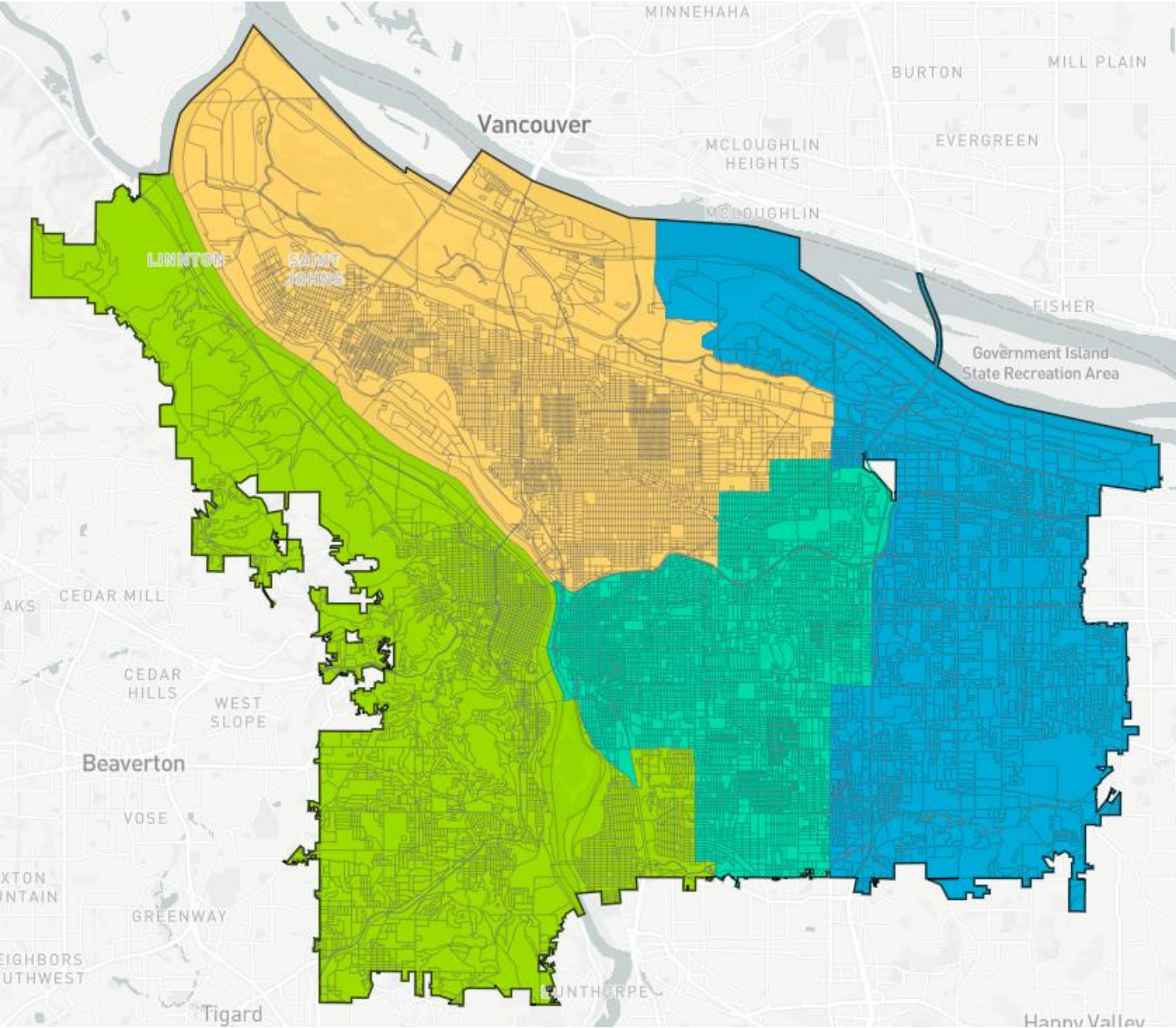


# Commission Business

- Excused absence: None
- Approve August 9 meeting summary
  - *Note: The Aug 16 and 31 meeting summaries will be posted as unapproved for the meeting record.*

# District Plan

## Map: 192992

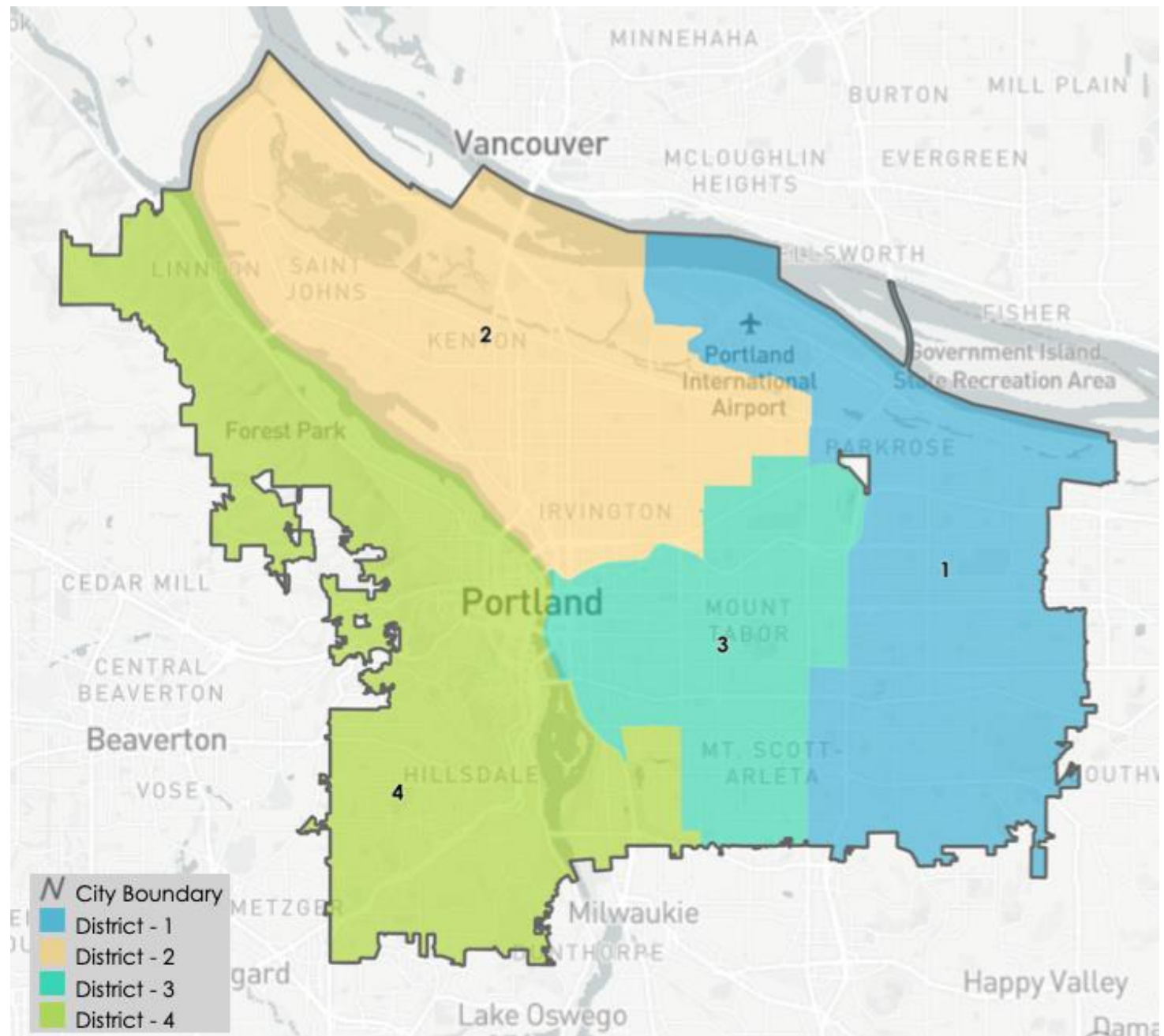


<https://districtr.org/edit/192992?event=portland2023>



# District Plan

## Numbering of District



<https://districtr.org/edit/192992?event=portland2023>

# Description: District 1

Beginning at the northeast corner of the city boundary, the True Point of Beginning, then continuing south along the eastern boundary line of the city to the southeast corner. Thence proceeding along the southern boundary of the city until the intersection of SE Clatsop Street and SE 82<sup>nd</sup> Avenue. Thence following SE 82<sup>nd</sup> Ave north to the intersection with SE Division St. Thence following SE Division St east to the intersection with Interstate 205. Thence following Interstate 205 north to the intersection with Interstate 84. Thence along Interstate 84 to the intersection with NE 102<sup>nd</sup> Ave. Thence north along NE 102<sup>nd</sup> to the intersection with NE Prescott St. Thence west along NE Prescott St to the intersection with Interstate 205. Thence following Interstate 205 north to the intersection with NE Sandy Blvd. Thence southwest along NE Sandy Blvd to NE 92<sup>nd</sup> Ave. Thence following NE 92<sup>nd</sup> Ave south to the intersection with NE Skidmore St. Thence west along NE Skidmore St to the intersection with NE Sandy Blvd. Thence southwest along NE Sandy Blvd to the intersection with NE 82<sup>nd</sup> Ave. Thence north along NE 82<sup>nd</sup> Ave to the intersection with Census block 410510076001012. Thence north along that block's western boundary line to the intersection with NE Lombard St. Thence east along NE Lombard St to the intersection with NE 82<sup>nd</sup> Ave. Thence north to the intersection with the southeast corner of Census block 410510073001078. Thence along that block's southern boundary line to the intersection with NE Alderwood Rd. Thence northeast following NE Alderwood Rd to the intersection with NE Cornfoot Rd. Thence west along NE Cornfoot Rd to the intersection with NE 47<sup>th</sup> Ave. Thence south along NE 47<sup>th</sup> Ave to the southeast corner of Census block 410510073001067. Thence west along that block's southern boundary line to the intersection with Census block 410510073001021. Thence following that block's western boundary to the intersection with NE 47<sup>th</sup> Ave. Thence along NE 47<sup>th</sup> Ave north to the intersection with NE Elrod Rd. Thence following NE Elrod Rd west to the intersection with NE 33<sup>rd</sup> Drive. Thence north along NE 33<sup>rd</sup> Drive to the intersection with the city's northern boundary and east along that boundary to the True Point of Beginning.

# Description: District 2

Beginning at the intersection of Interstate 5 and the city's northern boundary line, the True Point of Beginning, then proceeding west to the confluence of the Willamette River and Columbia River. Thence south along the centerline of the Willamette River to the crossing of the Steel Bridge. Thence due northeast along the Steel Bridge to the west corner of Census block 410510021012016. Thence following that block's western boundary to the intersection with Census block 410510023032031. Thence along that block's southern boundary to the intersection with NE MLK Jr Blvd. Thence south along NE MLK Jr Blvd to the intersection with Interstate 84. Thence following Interstate 84 east to the intersection with NE 47<sup>th</sup> Ave. Thence north along NE 47<sup>th</sup> Ave to the intersection with NE Wiberg Ln. Thence following NE Wiberg Ln to the intersection with NE Alameda St. Thence east along NE Alameda St to the intersection with NE 47<sup>th</sup> Ave. Thence north along NE 47<sup>th</sup> Ave to the intersection with NE Fremont St. Thence east along NE Fremont St to the intersection with NE 63<sup>rd</sup> Ave. Thence following NE 63<sup>rd</sup> Ave north to the intersection with NE Prescott St. Thence following NE Prescott St east to the intersection with NE 82<sup>nd</sup> Ave. Thence north along NE 82<sup>nd</sup> Ave to the intersection with Census block 410510076001012. Thence north along that block's western boundary line to the intersection with NE Lombard St. Thence east along NE Lombard St to the intersection with NE 82<sup>nd</sup> Ave. Thence north to the intersection with the southeast corner of Census block 410510073001078. Thence along that block's south boundary to the intersection with NE Alderwood Rd. Thence following NE Alderwood Rd west to the intersection with NE Cornfoot Rd. Thence west along NE Cornfoot Rd to the intersection with NE 47<sup>th</sup> Ave. Thence south along NE 47<sup>th</sup> Ave to the southeast corner of Census block 410510073001067. Thence west along that block's southern boundary to the intersection with Census block 410510073001021. Thence following that block's western boundary to the intersection with NE 47<sup>th</sup> Ave. Thence along NE 47<sup>th</sup> Ave north to the intersection with NE Elrod Rd. Thence following NE Elrod Rd west to the intersection with NE 33<sup>rd</sup> Drive. Thence north along NE 33<sup>rd</sup> Drive to the intersection with the city's northern boundary. Thence west along that boundary to the True Point of Beginning.



# Description: District 3

Starting at the intersection of SE 82<sup>nd</sup> Ave and the city's southern boundary, the True Point of Beginning, then proceeding north along SE 82<sup>nd</sup> Ave to the intersection of SE Division St. Thence proceeding east along SE Division St to the intersection with Interstate 205. Thence north along Interstate 205 to the intersection of Interstate 84. Thence following Interstate 84 east until the intersection with NE 102<sup>nd</sup> Ave. Thence north along NE 102 Ave to the intersection of the city's boundary with the City of Maywood Park. Thence following the City's western boundary with Maywood Park to the intersection of NE Skidmore St and NE 90<sup>th</sup> Ave. Thence west along NE Skidmore St to the intersection with NE Sandy Blvd. Thence southwest along NE Sandy Blvd to the intersection of NE 82<sup>nd</sup> Ave. Thence north along NE 82<sup>nd</sup> Ave to the intersection of NE Prescott St. Thence west along NE Prescott St until the intersection with NE 63<sup>rd</sup> Ave Thence south along NE 63<sup>rd</sup> Ave to the intersection of NE Fremont St. Thence west along NE Fremont St until the intersection with NE 47<sup>th</sup> Ave. Thence south along NE 47<sup>th</sup> Ave to the intersection with NE Alameda St. Thence west along NE Alameda St to the intersection with NE Wiberg Ln. Thence south along NE Wiberg Ln to the intersection of NE 47<sup>th</sup> Ave. Thence south along NE 47<sup>th</sup> Ave to the intersection with Interstate 84. Thence west along interstate 84 to the intersection with NE MLK Jr Blvd. Thence north along NE MLK Jr Blvd to the southeast corner of Census block 410510023032031. Then along that block's southern boundary line to the southeast corner of Census block 410510021012016. Thence along that block's southern boundary line to the Steel Bridge. Thence southwest along the Steel Bridge to the centerline of the Willamette River. Thence following the Willamette River south to the intersection with the Ross Island Bridge. Thence east along the Ross Island Bridge to the intersection with SE McLoughlin Blvd. Thence south along SE McLoughlin Blvd to the intersection with the southern boundary line of Census block 410510002021000. Thence following that block's southern boundary line east to the southeast corner. Thence north along the eastern boundary line of Census block 410510002021000 to the intersection with SE Holgate Blvd. Thence due east along SE Holgate Blvd to the intersection with SE Cesar E Chavez Blvd. Thence south along SE Cesar E Chavez Blvd to the intersection with SE Crystal Springs Rd. Thence east along SE Crystal Springs Rd to the intersection with SE 45<sup>th</sup> Ave. Thence south along SE 45<sup>th</sup> Ave to the intersection with SE 45<sup>th</sup> Pl. Thence south along SE 45<sup>th</sup> Pl to the intersection with the City's southern boundary line. Thence following the City's southern boundary line east, including all discontinuous areas, to the True Point of Beginning.

# Description: District 4

---

Beginning at the southwest corner of the City's boundary line, the True Point of Beginning, then proceeding north along the western City's boundary line until its intersection with the centerline of the Willamette River. Thence following the Willamette River south to the intersection with the Ross Island Bridge. Thence east along the Ross Island Bridge to the intersection with SE McLoughlin Blvd. Thence south along SE McLoughlin Blvd to the intersection with the southern boundary line of Census block 410510002021000. Thence following that block's southern boundary line east to its southeast corner. Thence north along the eastern boundary line of Census block 410510002021000 to the intersection with SE Holgate Blvd. Thence due east along SE Holgate Blvd to the intersection with SE Cesar E Chavez Blvd. Thence south along SE Cesar E Chavez Blvd to the intersection with SE Crystal Springs Rd. Thence east along SE Crystal Springs Rd to the intersection with SE 45<sup>th</sup> Ave. Thence south along SE 45<sup>th</sup> Ave to the intersection with SE 45<sup>th</sup> Pl. Thence south along SE 45<sup>th</sup> Pl to the intersection with the City's southern boundary line. Thence following the City's southern boundary line west to the True Point of Beginning.

# Roll Call Vote

Commissioner	Vote
Amanda Manjarrez	Yes
Arlene Kimura	Yes
David Siegel	Yes
DaWayne Judd	Yes
Joshua Laurente	Yes
Kari Chisholm	Yes
Lamar Wise	Yes
Melody Valdini	Yes
Neisha Saxena	Yes
Paul Lumley	Yes
Ransom Green III	Yes
Sharon VanSickle-Robbins	Yes
Steve Fleischman	Yes

Vote Summary	
Yes	13
No	0
Absent	0
Abstain	0





# Break

We are on a 5-minute break, we will be back!

# Next Steps

---

Date	Activities
August 22, 2023	Staff to file the district plan with City Elections Officer
August 28, 2023	Exit survey completed
September	Staff & Flo Analytics to draft District Commission report w/ support of volunteers to review.



# Meeting Adjourned

