

## 33.639 Solar Access

# 639

### Sections

- 33.639.010 Purpose
- 33.639.020 Where These Approval Criteria Apply
- 33.639.100 Solar Access Approval Criteria

### 33.639.010 Purpose

The solar access regulations encourage variation in the width of lots to maximize solar access for single-dwelling detached development and minimize shade on adjacent properties.

### 33.639.020 Where These Approval Criteria Apply

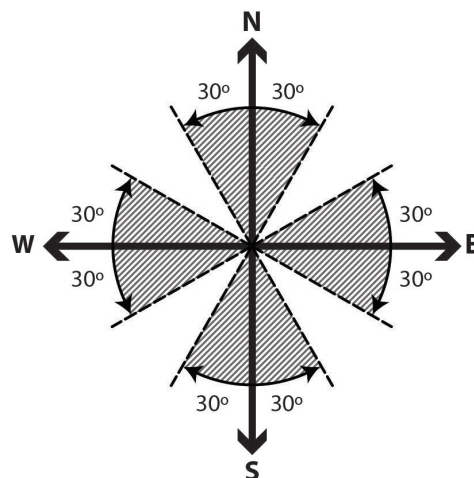
The approval criteria of this chapter apply to lots for single-dwelling detached development created as part of a land division proposal in all zones. Where it is not practicable to meet both the approval criteria of this chapter and the standards and approval criteria of other chapters in the 600's, the regulations of the other chapters supersede the approval criteria of this chapter.

### 33.639.100 Solar Access Approval Criteria

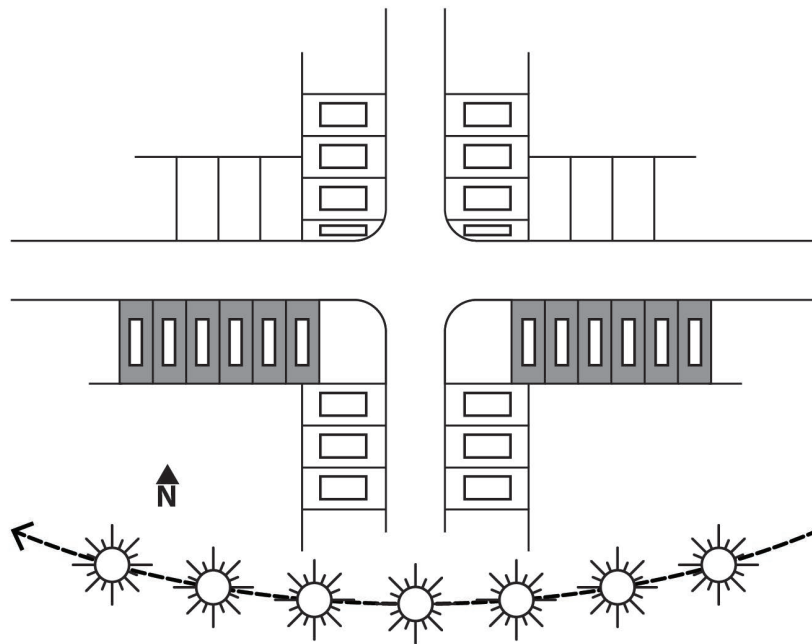
All of the following approval criteria must be met:

- A. On streets that are within 30 degrees of a true east-west axis, see Figure 639-1, the narrowest lots should be:
  1. Interior lots on the south side of the street. See Figure 639-2; and
  2. Corner lots on the north side of the street. See Figure 639-3.
- B. On streets that are within 30 degrees of a true north-south axis, the widest lots should be interior lots on the east or west side of the street. See Figure 639-4.

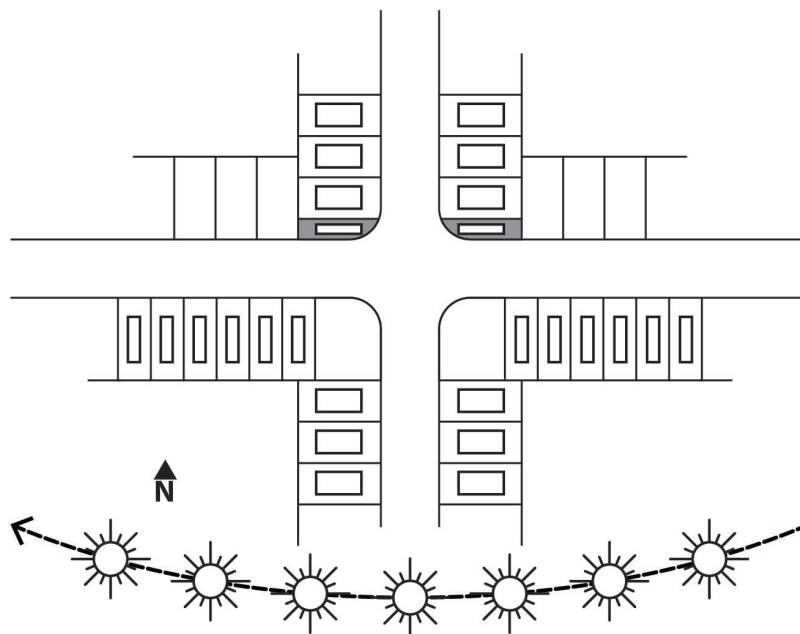
**Figure 639-1**  
**Axes within 30 Degrees of North-South and East-West**



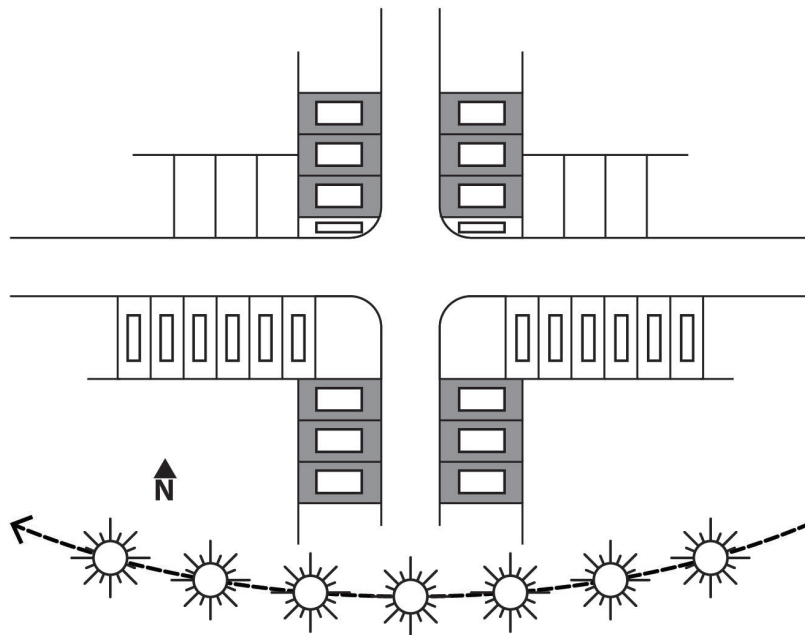
**Figure 639-2**  
**Interior Lots on South Side of Street**



**Figure 639-3**  
**Corner Lots on North Side of Street**



**Figure 639-4**  
**Interior Lots on East and West Side of Street**



---

*(Added by: Ord. Nos. 175965 and 176333, effective 7/1/02.)*

