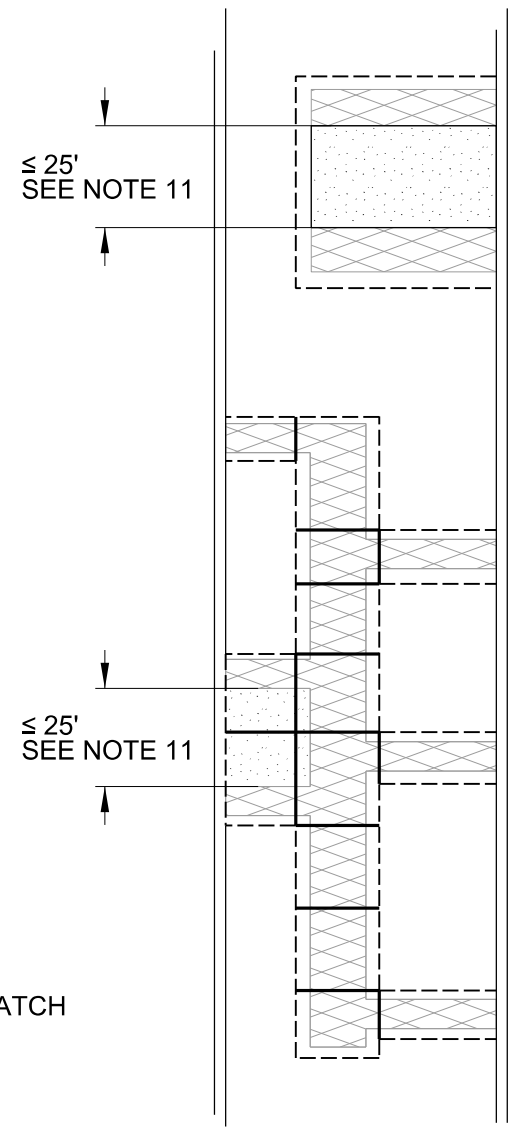


**SECTION VIEW
TYPICAL TRENCH RESURFACING
ON LOCAL STREETS**



**PLAN VIEW
TYPICAL TRENCH RESURFACING
ON LOCAL STREETS**

LEGEND

	TRENCH EXCAVATION LIMITS
	PAVEMENT RESTORATION LIMITS
	PCC RESTORATION LIMITS
	SAWN JOINT

NOTES:

1. LOCAL STREETS ARE DEFINED AS RESIDENTIAL STREETS WITH NO TRANSIT BUS ROUTE AND NO LANE MARKINGS.
2. RESTORE PAVEMENT AND BASE WITH 6" PLAIN CEMENT CONCRETE (PCC) ON 8" AGGREGATE BASE ROCK.
3. NEW PAVEMENT SHALL BE CLASS 4000, WITH 1.5" NOMINAL MAX SIZE OF AGGREGATE.
4. PROTECT FROM TRAFFIC WITH BARRICADES AND/OR STEEL PLATES UNTIL TESTED CYLINDER BREAKS ARE AT LEAST 75% OF FULL STRENGTH. IF NO CYLINDER TEST BREAKS ARE AVAILABLE, PROTECT FOR A MINIMUM FIVE CALENDAR DAYS.
5. SAWCUT AND JOIN CONCRETE TO CREATE NEW RECTANGULAR PANELS. EACH PANEL SHALL HAVE A DIMENSIONAL RATIO NO GREATER THAN 1.5X LENGTH BY 1X WIDTH. A TRENCH 3 FEET WIDE SHALL HAVE JOINTS NO MORE THAN 6 FEET APART.
6. PANELS WIDER THAN 8 FEET SHALL BE ROUGHLY SQUARE. MAX PANEL SIZE IS 16 FEET BY 16 FEET. MINIMUM PANEL SIZE IS 3 FEET BY 3 FEET.
7. RESTORE CONCRETE PAVEMENT PER STD. DRG. NO. P-515. IF UNDERMINED PAVEMENT EXCEEDS 1-FOOT, A 6" MIN. T-CUT IS REQUIRED.
8. IF NEW SAWCUT EDGE IS LESS THAN 2 FEET FROM AN EXISTING CONCRETE SAWCUT JOINT, CURB, GUTTER, TRENCH, CRACK OR EDGE OF STREET PAVEMENT, REPLACE THE PAVEMENT IN BETWEEN.
9. IF TRENCH IS LESS THAN 2 FEET FROM AN EXISTING PATCH:
 - AND EXISTING PATCH IS ≥ 36" WIDE, REPLACE THE PAVEMENT IN BETWEEN.
 - AND EXISTING TRENCH PATCH IS < 36" WIDE, REPLACE TO OPPOSITE SIDE OF EXISTING TRENCH.
10. ALIGN AND MATCH NEW JOINTS WITH EXISTING JOINTS IN THE ROADWAY, CURBS, CURB AND GUTTERS, AND DRIVEWAYS
11. SAWCUTS SHALL BE UNIFORM AND SMOOTH AND EITHER PARALLEL OR PERPENDICULAR TO THE ROADWAY CENTERLINE.
12. FULLY RESTORE PAVEMENT BETWEEN ALL NEW TRANSVERSE TRENCHES THAT EXTEND TO EDGE OF PAVEMENT, CURB, OR GUTTER AND ARE ALSO ≤ 25 FT APART.
13. TRENCH BACKFILL SHALL MEET COMPACTION AND DENSITY REQUIREMENTS. PROVIDE TESTING RESULTS UPON REQUEST BY THE INSPECTOR. BACKFILL WITH CLSM ANY TRENCH ≤ 12" WIDE.

Plot Date: 4/6/2018 9:24:40 AM

<p>The selection and use of this Standard Drawing, while designed in accordance with generally accepted engineering principles and practices, is the sole responsibility of the user.</p>	<p>PBOT PORTLAND BUREAU OF TRANSPORTATION</p> <p>City Engineer</p>		
	<p>Standard Drawing Title</p> <p>PCC PAVEMENT TRENCH RESURFACING ON LOCAL STREETS</p>		
<p>Note: All material and workmanship shall be in accordance with the City of Portland Standard Construction Specifications.</p>	Effective Date:	02-26-2018	<p>Standard Drawing No.</p> <p style="font-size: 1.5em; font-weight: bold;">P-523</p>
	Calc. Book No.:	523	
	Std. Drg. Report Date:	-----	