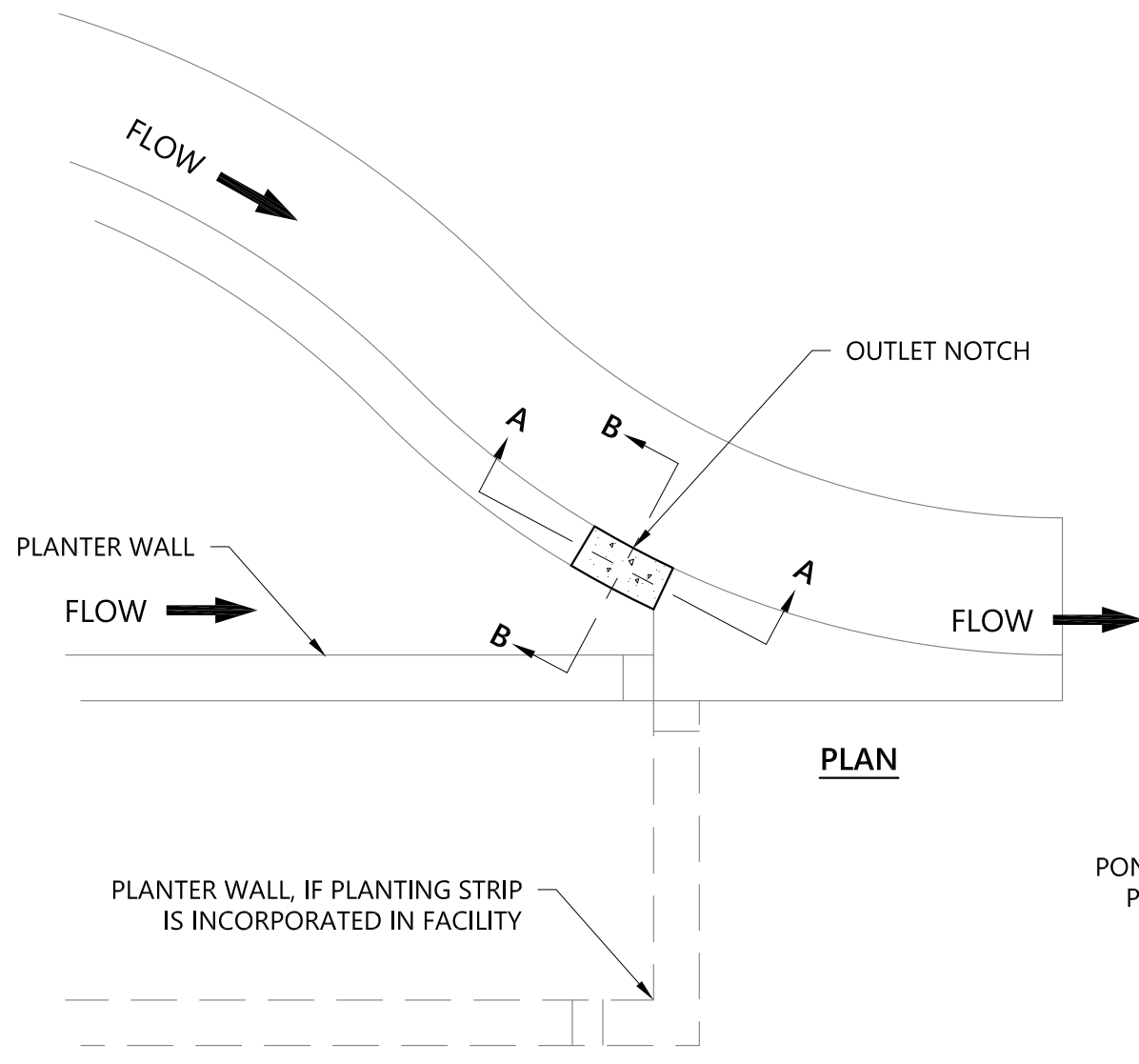
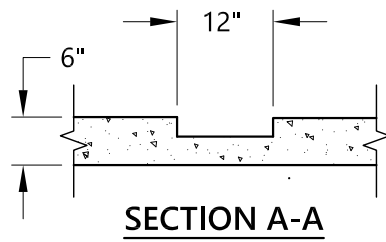


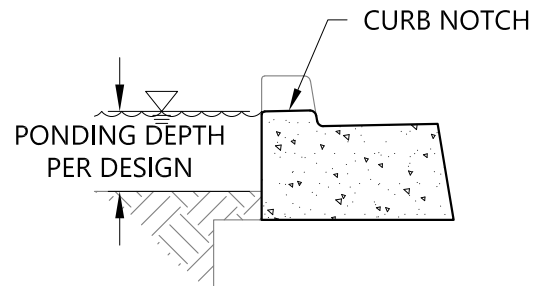
P-308_CURB_EXTENSION_OUTLET_NOTCH.DWG 8/24/20 7:47 AM DANPE



PLAN




SECTION A-A



SECTION B-B

NOTES:

1. REFER TO CITY OF PORTLAND STANDARD DRAWING P-540 FOR 18" THICKENED CURB AND GUTTER.
2. SET NOTCH ELEVATION AT: CURB AND GUTTER FLOW LINE ELEVATION (FL), 2" BELOW LOWEST SIDEWALK ELEVATION, OR 2" BELOW LOWEST TOP OF CURB ELEVATION . USE WHICHEVER IS LOWEST

| | | |
|---|--|---|
| <p>The selection and use of this Standard Drawing, while designed in accordance with generally accepted engineering principles and practices, is the sole responsibility of the user.</p> |  <p>Bureau of Environmental Services CITY OF PORTLAND, OREGON</p> <p>_____ Chief Engineer</p> | |
| | <p>STANDARD DRAWING Title</p> <p>CURB EXTENSION OUTLET NOTCH</p> | |
| <p>Note: All material and workmanship shall be in accordance with the City of Portland Standard Construction Specifications.</p> | <p>Effective Date: 07-31-20</p> | <p>Standard Drawing No.</p> <p>P-308</p> |
| | <p>Calc. Book No.: N/A</p> | |
| | <p>Baseline Report Date: N/A</p> | |