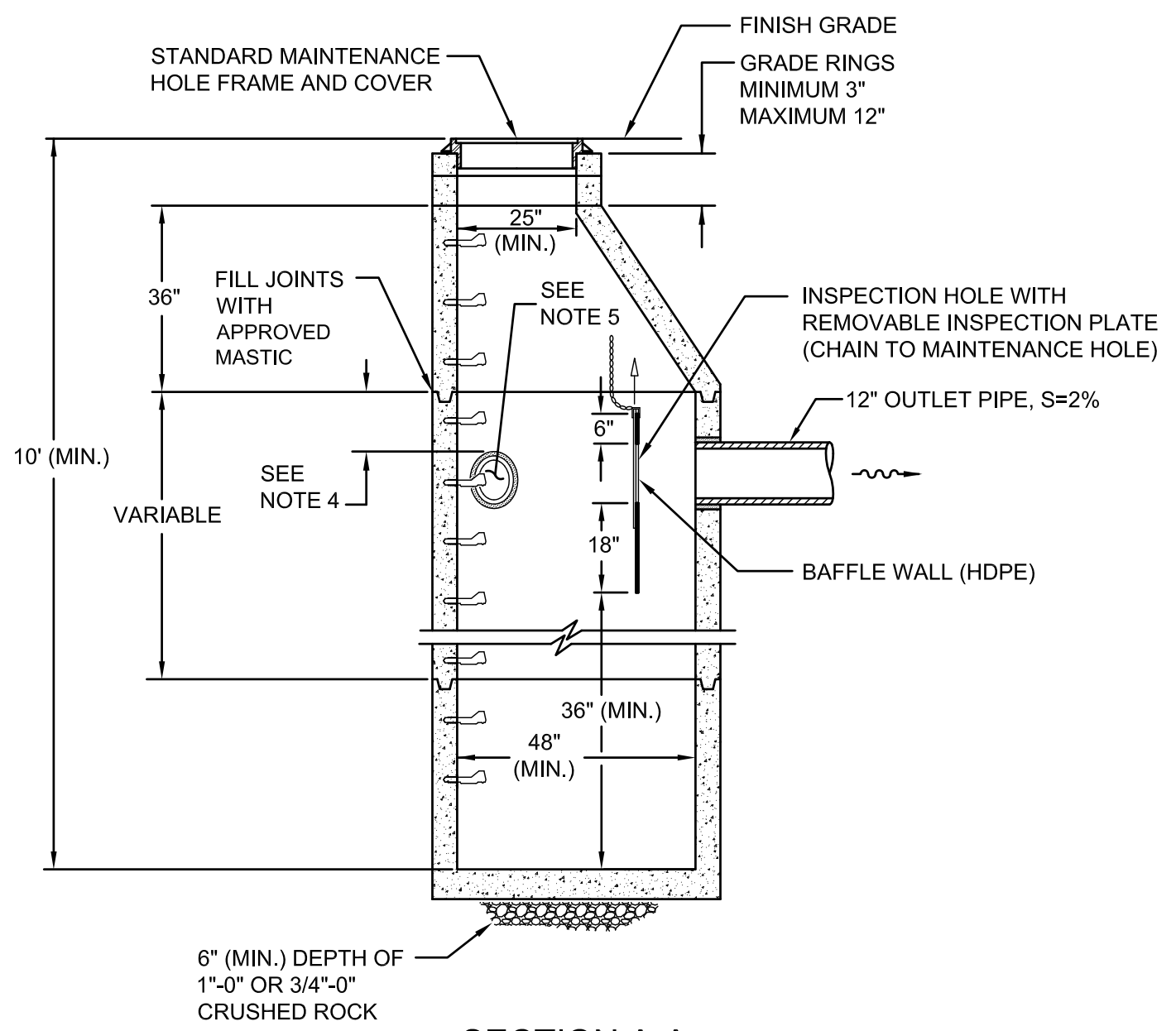


PLAN




SECTION A-A

NOTES:

1. ALL PRECAST SECTIONS SHALL CONFORM TO THE REQUIREMENTS OF THE CITY OF PORTLAND MANUFACTURING STANDARDS FOR PRECAST CONCRETE PRODUCTS (MSPCP), AS REVISED.
2. MAINTENANCE HOLE STEPS – REFER TO THE STANDARD DETAIL P-168.
3. PROVIDE A FLEXIBLE JOINT FOR ALL CONNECTED PIPES:
 - RIGID PIPE < 36 INCHES – 18 INCHES (MAX.) FROM OUTSIDE WALL
 - FLEXIBLE PIPE – 18 INCHES (MAX.) FROM THE OUTSIDE WALL UNLESS A FLEXIBLE JOINT FITTING IS INSTALLED AND ACCEPTED.
4. PROVIDE 12 INCHES (MIN.) OF SEPARATION BETWEEN A SECTION JOINT AND THE OUTER EDGE OF ANY OPENING.
5. LOCATE INVERT OF ANY INLET LEAD 6 INCHES (MIN.) ABOVE THE OUTLET PIPE INVERT.
6. BAFFLE WALL AND THE REMOVABLE INSPECTION PLATE MATERIAL SHALL BE 1/2 INCH THICK HIGH DENSITY POLYETHYLENE (HDPE) FLAT STOCK. SECURE BAFFLE WALL TO MAINTENANCE HOLE WALL WITH SIX STAINLESS STEEL BRACKETS (MIN).
7. PROVIDE A 12 INCH DIA. INSPECTION HOLE CENTERED IN THE BAFFLE WALL. CHAIN REMOVABLE PLATE TO MAINTENANCE HOLE WALL.

P-162_SED_MANHOLE_BAFFLE.DWG 8/20/20 11:02 AM DANPE

<p>The selection and use of this Standard Detail, while designed in accordance with generally accepted engineering principles and practices, is the sole responsibility of the user.</p>		<p>Bureau of Environmental Services CITY OF PORTLAND, OREGON</p>
	<p>Chief Engineer</p>	
<p>Note: All material and workmanship shall be in accordance with the City of Portland Standard Construction Specifications.</p>		<p>Standard Detail Title</p> <p>Sedimentation Maintenance Hole with Baffle</p>
<p>Effective Date: 01-01-09</p> <p>Calc. Book No.: N/A</p> <p>Baseline Report Date: N/A</p>		<p>Standard Detail No.</p> <p>P-162</p>