



Exhibit C: Transcript of voicemail from listing broker

Caitlin Maguire: *“Hi, Susan. This is Caitlin with Colliers returning your call. Um, just trying to connect on the building at 1010 SW 11<sup>th</sup>. Uh, its currently occupied by a month-to-month tenant, uh, but happy to chat, uh, some more about it with you. Just please give me a call back at 971.285.1127. Thanks.”*

Exhibit D: Images of campaign signs in all windows on the first floor of the entire building

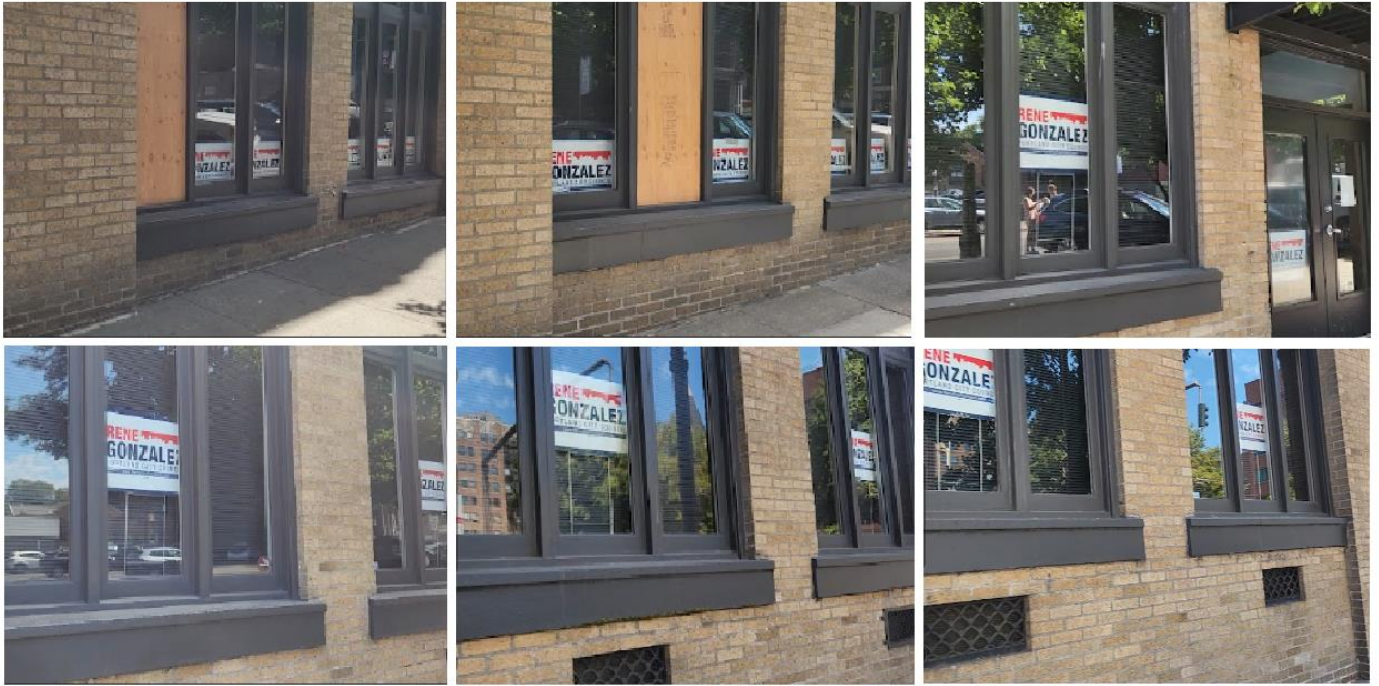




Exhibit G: Online advertisement for monthly parking of a similar parking lot adjacent to 1010 SW 11<sup>th</sup> (citycenterparking.com):

## SW 12th And Salmon - Lot #91

1120 SW Salmon St,  
Portland OR 97201



This is an uncovered parking facility located along SW 12th Ave between Main & Salmon Streets.



### Daily Rate

Hourly:	\$6.00 hour
Daily:	\$18.00 daily max, \$9.25 early bird (before 10.30am)
Evening/Weekend:	\$4.00 eve after 4pm



### Monthly Rate

Non Reserved Parking: \$230.00

[Buy Parking](#)

