



# CITY OF PORTLAND ENVIRONMENTAL SERVICES



Water Pollution Control Laboratory

6543 N Burlington Avenue, Bldg 217, Portland, Oregon 97203 ■ Nick Fish, Commissioner ■ Michael Jordan, Director

## Industrial Permitting Section BATCH DISCHARGE AUTHORIZATION PROCEDURE

All industrial users of the City of Portland (the City) sewer system are to be aware that it is unlawful to discharge industrial wastewater into the City sewer system except in compliance with City Code Chapter 17.34 and Sanitary Discharge and Pretreatment Administrative Rules ENB-4.03. The following procedures are to be followed when requesting written authorization for controlled discharge of a discrete, contained volume of wastewater (“batch discharge”) to the City’s sewer system. The Industrial Permitting Section only issues authorizations to the sanitary and combined sewer systems; requests to discharge to the storm system will be forwarded to the Industrial Stormwater Section.

### Batch Discharge Requirements

Batch discharges are subject to discharge limitations in accordance with Portland City Code Chapter 17.34, Sanitary Discharge and Pretreatment Administrative Rules ENB-4.03, and the pollutants listed in Table 1.

Batch discharges to the sewer system must take place during **DRY WEATHER ONLY**. Dry weather is defined as a time when it is not raining and has not rained for the previous eight hours; melting ice and snow, even though there has been no precipitation for the previous eight hours, shall not be considered dry weather.

The batch discharge flow rate is to be equal to or less than **50 gallons per minute (gpm)**. Batch discharge flow rates greater than 50 gpm require additional authorization by the City Bureau of Environmental Services Maintenance Engineering Section. It may take up to a week for Engineering to respond to the request. You may be required to:

- Limit the discharge rate due to sewer conditions, location of sewer diversions, etc.
- Require discharger’s personnel be available to monitor the discharge and to be in contact with City personnel monitoring the flow.

### Batch Discharge Authorization Instructions

Batch discharges are not allowed without written authorization and are subject to administrative fees and may be subject to current sewer rates. To obtain authorization for a batch discharge, complete the following:

1. Submit a Batch Discharge Authorization Application to the Industrial Permitting Section’s Batch Discharge Program at [batchdischarge@portlandoregon.gov](mailto:batchdischarge@portlandoregon.gov). The application must be complete, including all maps or diagrams.

Ph: 503-823-5600 Fax: 503-823-5656 ■ [www.portlandoregon.gov/bes](http://www.portlandoregon.gov/bes) ■ Using recycled paper ■ An Equal Opportunity Employer

The Bureau of Environmental Services is committed to providing meaningful access. For accommodations, modifications, translation, interpretation or other services, please call 503-823-7740, or use City TTY 503-823-6868, or Oregon Relay Service 711.

Traducción o interpretación	Chuyển Ngữ hoặc Phiên Dịch	翻译或传译	Письменный или устный перевод
Traducere sau Interpretare	Письмовий або усний переклад	翻訳または通訳	Turjumida ama Fasiraadda
ການແປພາສາ ຫຼື ການອະທິບາຍ	الترجمة التحريرية أو الشفهية		

503-823-7740

2. Analytical results from wastewater in accordance 40 CFR, Part 136 “Guidelines Establishing Test Procedures for The Analysis of Pollutants” may be required to ensure batch discharges meet City discharge limitations. The wastewater analytical results must be submitted to the City for review and approval prior to discharge.
  - a. If wastewater samples fail to meet discharge limitations, additional pretreatment and sampling will be required, and you may be required to submit a new application packet.
  - b. Batch discharges are subject to an extra-strength charge if the discharge has a biochemical oxygen demand (BOD) and/or total suspended solids (TSS) in excess of concentration thresholds in accordance with City Code, Subsection 17.36.060(A).
3. Discharges are subject to conditions specified in a written authorization to discharge issued by the Industrial Permitting Section.
4. The discharger shall return the Batch Discharge Report issued with the written authorization to discharge to the Industrial Permitting Section within 30 days of completion of the batch discharge.

The City reserves the right to deny discharge applications under just cause and revoke an authorization of batch discharges at any time. If you have any questions or comments, please contact the Batch Discharge Program of the Industrial Permitting Section at [batchdischarge@portlandoregon.gov](mailto:batchdischarge@portlandoregon.gov).

**More information:**

Requests to discharge to the **sanitary or combined** system:  
<https://www.portlandoregon.gov/bes/article/325324>

Requests to discharge to the **storm** sewer system:  
<https://www.portlandoregon.gov/bes/65422>

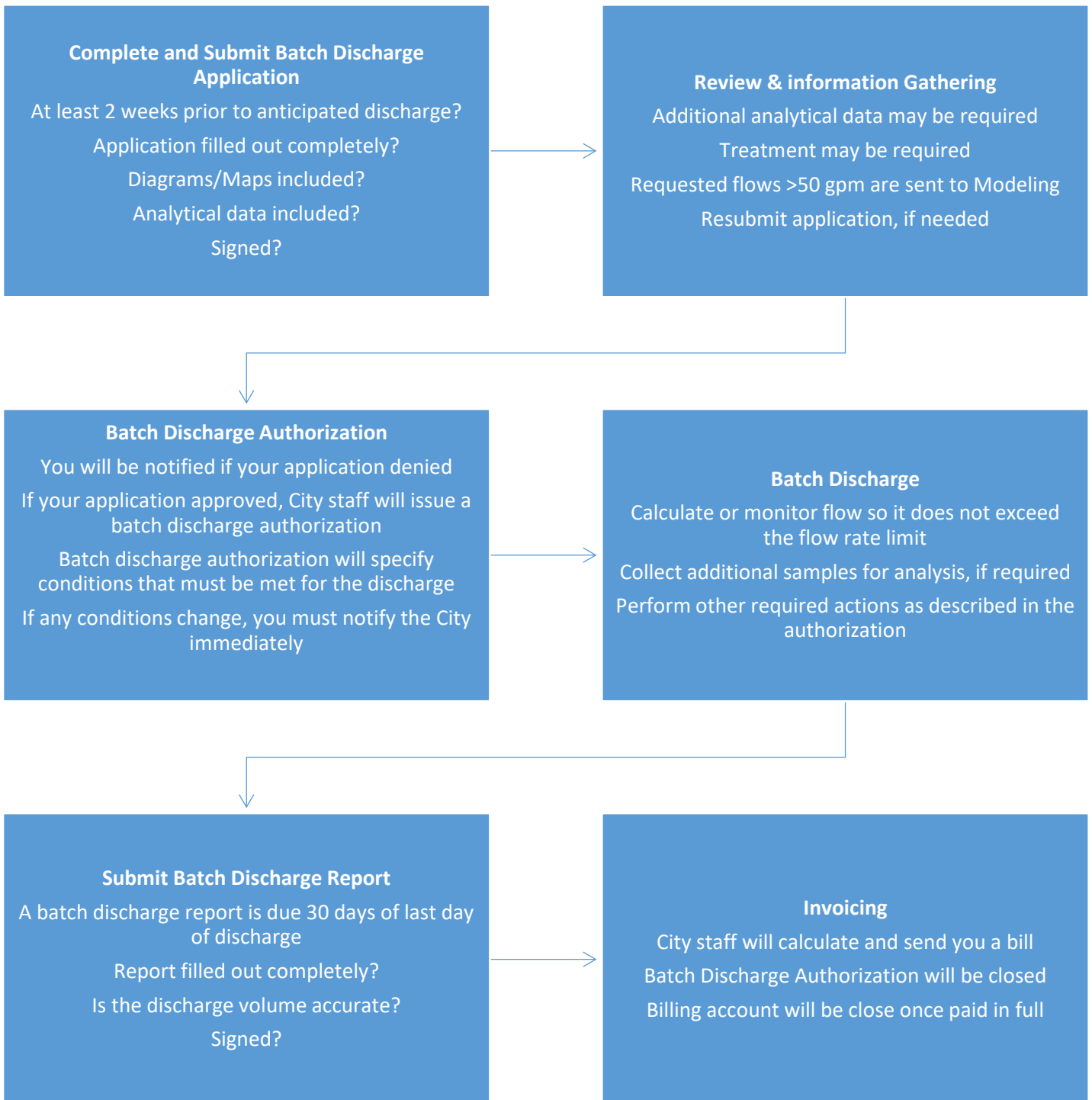
City Code Chapter 17.34, Sanitary Discharges:  
<https://www.portlandoregon.gov/citycode/28861>

Sanitary Discharge and Pretreatment Administrative Rules ENB-4.03:  
<https://www.portlandoregon.gov/citycode/article/465822>

The Bureau of Environmental Services is committed to providing meaningful access. For accommodations, modifications, translation, interpretation or other services, please call 503-823-7740, or use City TTY 503-823-6868, or Oregon Relay Service 711.

Traducción o interpretación	Chuyển Ngữ hoặc Phiên Dịch	翻译或传译	Письменный или устный перевод
Traducere sau Interpretare	Письмовий або усний переклад	翻訳または通訳	Turjumida ama Fasiraadda
ການແປພາສາ ຫຼື ການອະທິບາຍ	الترجمة التحريرية أو الشفهية		

# Batch Discharge Guidance Chart



**Table 1. Wastewater Discharge Limitations**

Sanitary Discharge and Pretreatment Program Administrative Rules ENB – 4.03 (July 2019)

<https://www.portlandoregon.gov/citycode/article/465822>

Local Limits		Prohibited Pollutants	
Pollutant	Limit (mg/L)	Pollutant	Limit (mg/L) <sup>1</sup>
<b>Metals</b>		<b>Volatiles</b>	
Arsenic (total)	0.20	Bromodichloromethane	0.0025
Cadmium (total)	0.70	Bromoform	0.0025
Chromium (total)	3.53	Bromomethane	0.005
Copper (total)	2.80	1,1,1,2-Tetrachloroethane	0.0025
Lead (total)	0.70	1,1,2-Trichloroethane	0.005
Mercury (total)	0.010	1,1-Dichloroethene	0.005
Molybdenum (total)	1.40	Chloroethane	0.050
Nickel (total)	2.80	Chloromethane	0.005
Selenium (total)	0.60	Dibromochloromethane	0.0025
Silver (total)	0.40	Vinyl chloride	0.0025
Zinc (total)	3.70	<b>Base/Neutral Extractables</b>	
<b>Non-metals</b>		1,2,4-Trichlorobenzene	0.005
Cyanide (total)	1.20	1,2-Dichlorobenzene	0.005
Oil and grease: non-polar	100	1,2-Diphenylhydrazine	0.0025
pH	5.0 - 11.5 s.u.	1,3-Dichlorobenzene	0.0025
<b>Organics</b>		1,4-Dichlorobenzene	0.005
1,2-Dichloroethane	0.50	2,6-Dinitrotoluene	0.010
2,4-Dinitrotoluene	0.13	4-Bromophenyl-phenyl ether	0.010
Acrylonitrile	1.00	Bis(2-chloroethoxy) methane	0.010
Chlordane	0.03	Bis(2-chloroisopropyl) ether	0.010
Chlorobenzene	0.20	Hexachlorobenzene	0.010
Chloroform	0.20	Hexachlorobutadiene	0.010
Nitrobenzene	2.00	Hexachlorocyclopentadiene	0.010
Pentachlorophenol	0.04	N-Nitrosodi-n-propylamine	0.010
Trichloroethene (TCE)	0.20	<b>Pesticides</b>	
		4,4'-DDD (p,p'-tde)	0.0002
		4,4'-DDE (p,p'-ddx)	0.0002
		4,4'-DDT	0.0002
		a-BHC (alpha)	0.0001
		b-BHC (beta)	0.0002
		c-BHC (delta)	0.0001
		Dieldrin	0.0002
		Endosulfan II (beta)	0.0002
		Endosulfan sulfate	0.0002
		Endosulfan I (alpha)	0.0002
		Endrin	0.0002
		Endrin Aldehyde	0.0005
		g-BHC (gamma) (Lindane)	0.001
		Heptachlor	0.0001
		Heptachlor Epoxide	0.0001
		Toxaphene	0.0009
		<b>Polychlorinated Biphenyls (PCBs)</b>	
		Aroclor 1016	0.00025
		Aroclor 1221	0.0005
		Aroclor 1232	0.00025
		Aroclor 1242	0.00025
		Aroclor 1248	0.00025
		Aroclor 1254	0.00025
		Aroclor 1260	0.00025
<b>Note:</b>			
<sup>1</sup> = Prohibited pollutants are not amendable to treatment or reduction by the sewage process employed or are only partially amendable to treatment. Sample results for prohibited pollutants must be reported to the method detection limit that does not exceed the limit listed.			