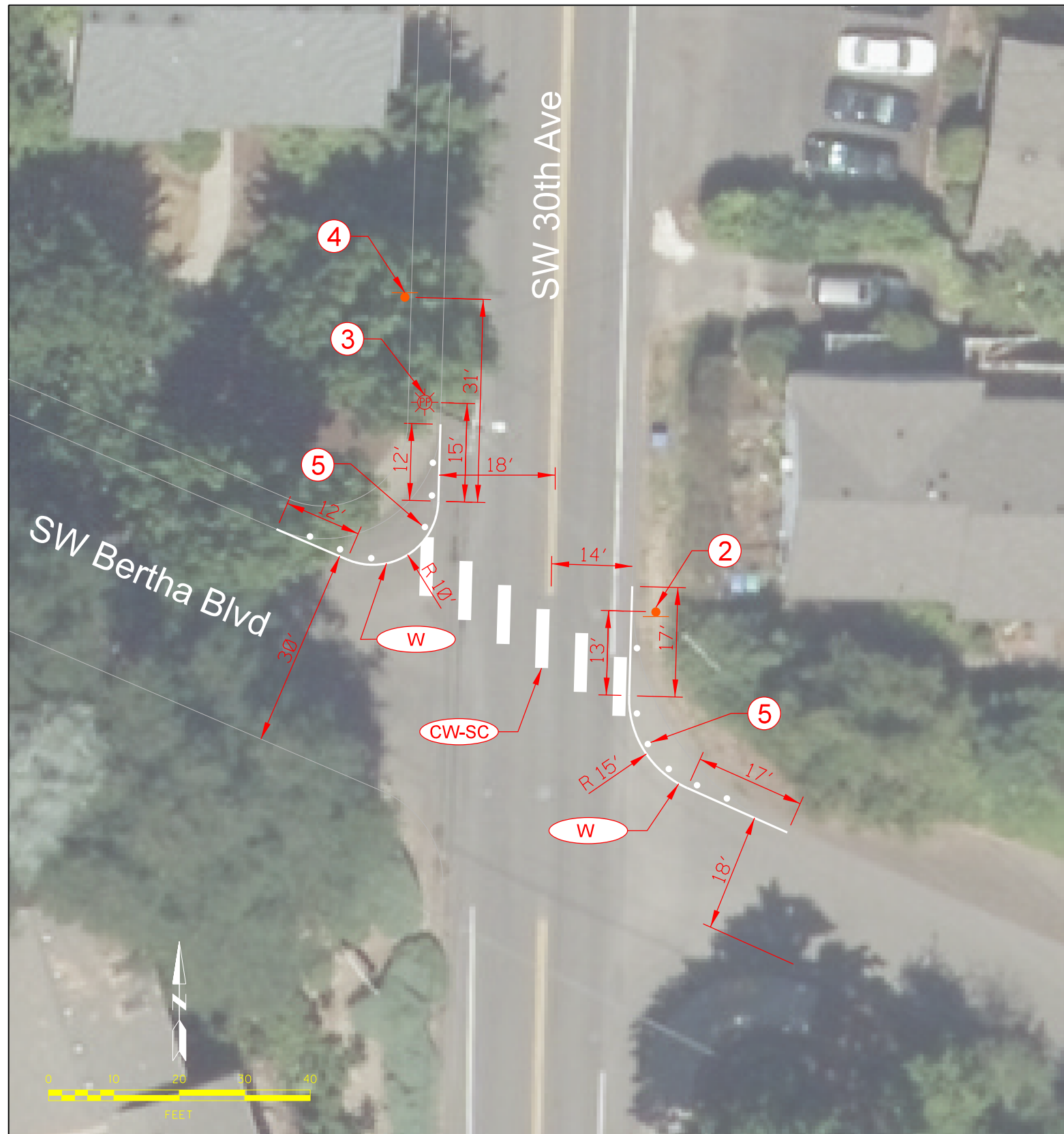





Plot Date: 2/22/2021 11:48:24 AM File: X:\Active Projects\T00637 - SWM Kings\SW 30th Ave at SW Bertha\SW 30th Ave & SW Bertha.dgn



- Striping Notes:**
- 1.) Remove all conflicting striping and pavement markings.
 - 2.) All striping dimensions are taken from center of stripe to center of stripe.
 - 3.) Refer to pavement marking standard detail blocks shown on ODOT Std. Dwgs. TM500 to TM503. Oval indicators refer to ODOT Std. Dwgs.
 - 4.) All longitudinal line work shall be 'thermoplastic, extruded, non-profile, 120mils.
 - 5.) All other transverse line work, legends, symbols, and arrows to be Type "B-HS" thermoplastic.
 - 6.) Repair/replace any pavement markings damaged or removed due to construction.

- Construction Notes:**
- 1.) Refer to Traffic Sign Number Legend for sign information.
 - 2.) Install pipe sign support, length= 128", with breakaway anchor footing per PBOT Std. Drg. Nos. P-400 and P-405. Install new Sign No. 1 and Sign No. 2.
 - 3.) Install new Sign No. 1 and Sign No. 2 on existing utility pole.
 - 4.) Install pipe sign support, length= 104", with breakaway anchor footing per PBOT Std. Drg. Nos. P-400 and P-405. Install new Sign No. 3.
 - 5.) Install 36" white surface mounted tubular markers inside of W pavement marking line at 5-foot spacing. Maintain opening between tubular markers at marked crosswalk.
 - 6.) Refer to signing standard drawings shown on PBOT Std. Dwgs. P-400 to P-420 for sign fabrication and installation details.

Traffic Sign Number Legend

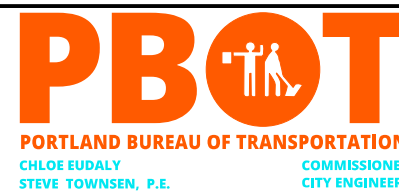
		
W3210 W11-2 30"X30" Sign NO. 1	S1105 W16-7P 24"X12" Sign NO. 2	P1000L COP 12"X18" Sign NO. 3

DESIGNED BY S. Kao	DATE APPROVED Oct. 2021
CAD BY S. Kao	
CHECKED BY W. Cawley	



APPROVALS:

CITY TRAFFIC ENGINEER	REG. PROF. ENGR. NO. 19146PE
CITY ENGINEER	REG. PROF. ENGR. NO. 51538PE



Permanent Sign & Striping Plan at SW 30th Ave

1/4 SECTION XXXX
PROJECT NO. T00637
SHEET NO. 1