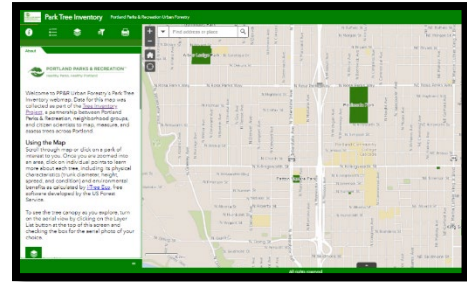


# How to Build a Tree Walk

## Using Portland's Tree Inventory

Anyone can make a tree walk in their neighborhood using the Tree Inventory Project webmap. If you are looking for a new way to explore Portland, curious about who is who in a local park, or wanting to share a creative experience with neighbors, tree walks are a great way to stay connected.



### Visit the Tree Inventory online!



If it is your first time using the online webmap, we have a quick introduction video available online. Learn to change layers, add filters, and discover which trees live near you.

[Visit Portland Online Tree Inventory](#)

### Select the Trees to Visit

Write down the name of the trees you want to visit, what are some of the traits or characteristics that will identify each tree?

#### Example

**Tree Name:**

American Sycamore *Platanus occidentalis*

**What to look for:**

Large tree, leaves fall off in winter. Bark is flaky - whiter underneath Leaves are at least as big as your hand

**Where to find nearby:**

Irving Park, just south of basketball courts

**Draw the leaf shape of this tree**



**Title:**

**Theme:**

**Tree List:**

**Map:**

**Tree Name:**

.....  
**What to look for:**

.....  
**Where to find nearby:**

---

**Draw the leaf shape of  
this tree**

**Tree Name:**

.....  
**What to look for:**

.....  
**Where to find nearby:**

---

**Draw the leaf shape of  
this tree**

**Tree Name:**

.....  
**What to look for:**

.....  
**Where to find nearby:**

---

**Draw the leaf shape of  
this tree**

**Tree Name:**

.....  
**What to look for:**

.....  
**Where to find nearby:**

---

**Draw the leaf shape of  
this tree**

**Tree Name:**

.....  
**What to look for:**

.....  
**Where to find nearby:**

---

**Draw the leaf shape of  
this tree**

**Tree Name:**

.....  
**What to look for:**

.....  
**Where to find nearby:**

---

**Draw the leaf shape of  
this tree**