

**Lents Neighborhood Plan
Action Charts
Adopted by Resolution No. 35491**

RESOLUTION No. 35491

Adopt the Vision Plan Map and Action Charts for the Outer Southeast Community Plan and Neighborhood and Business Plans developed with and as part of the Outer Southeast Community Plan. (Resolution).

WHEREAS, the Comprehensive Plan Map of the Outer Southeast Community Plan is a part of the Comprehensive Plan, the Vision Plan Map is not part of the Comprehensive Plan.

WHEREAS, the Vision Plan Map is attached as Exhibit O and is intended as an illustrative diagram to show how the various themes of the Outer Southeast Community relate to each other. Plan features and elements support policies and objectives and are referred to in the Action Charts (Exhibit A). While realization of the Outer southeast community Plan would be enhanced through development of these features and elements, there may be other ways than those proposed to achieve the desired ends.

WHEREAS, the policy elements of the Outer Southeast Community Plan are adopted by ordinance as a part of the Comprehensive Plan, the Action Charts are not part of the Comprehensive Plan.

WHEREAS, the Outer Southeast Community Plan, is attached as Exhibit A and the following Neighborhood and Business Plans are attached as Exhibits B through L. (Exhibit B. Centennial; Exhibit C. Foster-Powell; Exhibit D. Hazelwood; Exhibit E. Lents; Exhibit F. Mill Park; Exhibit G. Montavilla; Exhibit H. Mt. Scott-Arleta; Exhibit I. Pleasant Valley; Exhibit J. Powellhurst-Gilbert; Exhibit K. South Tabor; Exhibit L. Outer Southeast Business Plan).

WHEREAS, the Action Charts consist of lists of ideas for capital projects and ongoing programs.

WHEREAS, the Action Charts describe the proposed projects, programs and regulatory actions. They identify an appropriate time frame for implementation and identify public, non-profit and private agencies and partnerships to lead or oversee the implementation of the item.

WHEREAS, the Action Charts also suggest changes in the City's land use regulations and zoning map. These changes in the City's land use regulations are adopted separately by ordinance.

WHEREAS, the City Council has adopted the Recommended Outer Southeast Community Plan vision, policies, and objectives, as amended by Council in Exhibit U, as part of the City of Portland Comprehensive Plan.

NOW, THEREFORE, BE IT RESOLVED by the Council of the City of Portland, a municipal corporation of the State of Oregon, that the City Council of the City

of Portland adopt the Vision Plan Map (Exhibit O) and the Action Charts of the Recommended Outer Southeast Community Plan, Neighborhood and Business Plan, as amended by Council (as shown in Exhibits A through L), and that:

- a. The Vision Plan Map (Exhibit O) is adopted by Council as an illustrative diagram to show how the various themes of the Outer Southeast Community relate to each other.
- b. The implementation actions associated with the Recommended Outer Southeast Community Plan Action Charts are approved by Council as a starting place for the revitalization of the Outer Southeast Community.
- c. Proposals for projects and programs approved by this resolution are understood to be a starting place. All actions have an identified implementor. They will be adopted with the understanding that some will need to be adjusted and others replaced with more feasible proposals. Identification of an implementor for an action is an expression of interest and support with the understanding that circumstances will affect the implementation leader's ability to take action.
- d. The City Council authorizes the City agencies identified on the action charts as Implementors, to engage in activities aimed at implementing the projects and programs called for on the Outer Southeast Community, Neighborhood, and Business Plan action charts.

BE IT FURTHER RESOLVED by the Council of the City of Portland, a municipal corporation of the State of Oregon that the City Council authorizes and directs the Bureau of Planning to make corrections to the action charts of the Outer Southeast Community Plan, Neighborhood and Business Plans in order to correct typographical errors and to ensure parallel construction.

Adopted by the Council,
Commissioner Charlie Hales
Gerald D. Brock, Ph.D., AIA, AICP: gdb

BARBARA CLARK
Auditor of the City of Portland
By

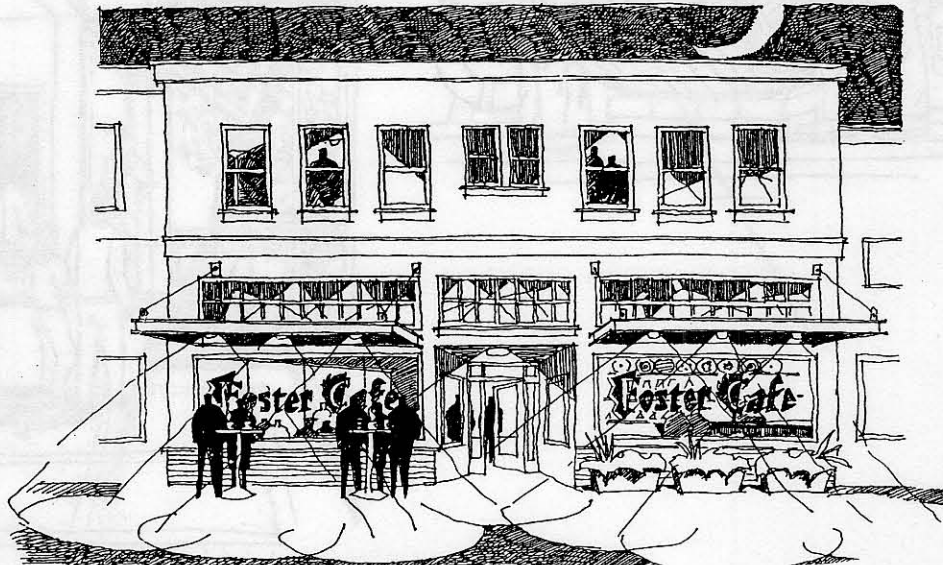
Deputy

Action Chart: Crime and Public Safety

#	Actions	Time				Implementors
		Adopted with Plan	On-going	Next 5 Yrs	6 to 20 Yrs	
PROJECTS						
PS1	Implement Neighborhood Watch in designated areas. Provide information available from Southeast Uplift to residents of the neighborhood.		X			SEUL, LNA, PPB, BHCD
PS2	Continue involvement with the Southeast Precinct Advisory Committee.		X			LNA
PS3	Identify trouble spots where speeding, drug sales, or gang activity call for increased attention from the appropriate agencies.			X		PPB, SEUL, LNA
PS4	Evaluate the need for a precinct, police/community contact stations in store fronts or other limited-facility form in the Lents neighborhood. Coordinate with the Portland Police Bureau, and possibility the County Sheriff to assist in this analysis and to establish appropriate actions to enhance public safety.			X		PPB, LNA, BHCD
PS5	Identify crisis areas (if any) and establish safety action teams in designated areas.			X		PPB, LNA
PS6	Investigate the possibility of holding parents responsible for their children's (minors) behavior.			X		Juvenile Court, LNA, SEUL
PS7	Survey the current number and locations of public street lights and inform the City of locations needing lights to improve traffic safety.			X		LNA
PS8	Provide information and statistics to property owners to encourage them to upgrade lighting on their private properties and to have joint lighting projects with their neighbors to reduce crime and increase pedestrian safety.			X		LNA
PROGRAMS						
PS9	Organize a Lents Public Safety Committee to work with Southeast Uplift to organize and support Neighborhood Watch and citizen patrols in the Lents Neighborhood.			X		LNA, SEUL
PS10	Establish community contact stations in fire stations or other limited-facilities which are accessible to residents in Lents.			X		LNA, PFB
PS11	Develop and maintain a relationship with the police liaison officer through regular meetings to review methods of dealing with specific problems.		X	X		LNA, PPB
PS12	Work with the Fire Bureau on educational means of making the neighborhood safer.			X		PFB, LNA
PS13	Request increased street lighting in the area of 92nd & Duke.			X		LNA

#	Actions	Time				Implementors
		Adopted with Plan	On-going	Next 5 Yrs	6 to 20 Yrs	
PS14	Inform residents how to request street lighting installation.			X		LNA
PS15	Request increased street lighting from 92nd to 82nd between Foster and Flavel.			X		LNA
PS16	Take action which will result in community cleanup of vandalized property, using the facilities of Southeast Uplift.			X		LNA
PS17	Educate people about the principles of crime prevention through environmental design. Provide information in brochure form which illustrates the recommendations of the Police Bureau regarding landscaping around homes and businesses.			X		BOP, PPB, SEUL, LNA
PS18	Encourage motion detector lighting.			X		LNA, BOB
PS19	Increase community involvement of the Fire Bureau by maintaining the Fire Station at 92nd and Reedway to provide a facility presence in the heart of the neighborhood.			X		LNA, PFB

Note: Action Charts were approved by Portland City Council by resolution. They are a starting place. All actions have an identified implementor. They were adopted with the understanding that some will need to be adjusted and others replaced with more feasible proposals. Identification of an implementor for an action is an expression of interest and support with the understanding that circumstances will affect the implementation leader's ability to take action.



Cafes & Restaurants increase activity & security.
Residential units above commercial spaces add an around-the-clock human presence to the street and the neighborhood.

From *Neighborhood Building Blocks: Design Guidelines for Outer Southeast Portland*
Portland Community Design, 1995

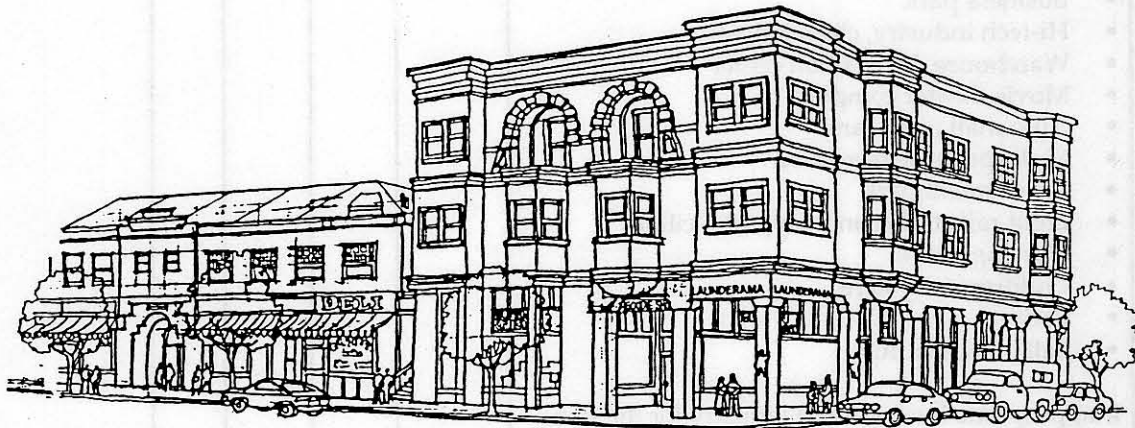
Action Chart: Economic Development

#	Actions	Time				Implementors
		Adopted with Plan	On-going	Next 5 Yrs	6 to 20 Yrs	
	PROJECTS					
ED1	Create and enhance pedestrian friendly environments in designated pedestrian districts.			X		PDOT, LNA, Pvt, PA
ED2	Provide opportunities for expansion of existing business firms.	X				BOP, BA
ED3	Commercially zoned lots should be at least 200 feet in depth, in appropriate areas.	X				BOP, BA
ED4	Develop and enhance the viability of business nodes.	X				BA
ED5	Revitalize historic buildings in the Lents area.			X		PDC, BA
ED6	Encourage development or expansion of business/commercial employers that create jobs with family-level wages.			X		PDC, BA
ED7	Create an attractive shopping and working environment that will bring pride to the community by emphasizing street trees and street furniture.			X		ROSE, BOP, FOT, BA
ED8	Discourage the expansion of strip commercial development.	X				BOP, BA
ED9	Encourage development of activities (festivals, carnivals, picnics, etc.) that will promote the area.		X			LNA, BA
ED10	Avoid excessive off-street parking and support joint (shared) parking.			X		LNA, BA, BOP
ED11	Encourage a stronger working relationship between the neighborhood association and business associations.			X		SEUL, LNA, OSEBC, BA
ED12	Develop a vocational training center.			X		LNA, PCC, MHCC, CCC
ED13	Work with PDC to provide additional family wage paying jobs within the LNA for residents of LNA.		X			LNA, BA, BHCD
ED14	Encourage the creation of small business firms (less than 10 employees) in the area.			X		PDC, Eastport Plaza, BA, OSEBC

#	Actions	Time				Implementors
		Adopted with Plan	On-going	Next 5 Yrs	6 to 20 Yrs	
	PROGRAMS					
ED15	Encourage and support future high capacity transit on I-205 and to existing business centers by supporting appropriate land use and urban design.			X		LNA, BA
ED16	Encourage the use of local goods and services.			X		LNA, OSEBC, FAB A, 82ABA
ED17	Develop long-range economic development strategies.			X		PDC, ODDA, OSEBC, FAB A, 82ABA
ED18	Seek ways to attract a viable high-tech industry to the area.			X		PDC, OSEBC, FAB A, 82ABA
ED19	Seek ways to provide funding to support economic development in the community.			X		PDC, OSEBC FAB A, 82ABA
ED20	<p>Support programs which lead to appropriate uses for the Publisher's Paper site. These include:</p> <ul style="list-style-type: none"> • Office Park • Mixed use housing • Business park • Hi-tech industry, clean industry • Warehouse distribution center • Movie theater complex • Auto mall (new cars) • Multi-purpose recreation • Amusement park • Light rail station and support facilities • Nursing home • Children's day care • Park • Ball park/stadium <p>Inappropriate business and industry for the site:</p> <ul style="list-style-type: none"> • Rock crusher • Garbage compost • Waste recycling • Used car sales • R.V. park • Paper mill • Heavy industry with high off-site and environmental impacts 			X		PDC, Eastport Plaza, OSEBC, BA
ED21	Develop and implement an image/marketing plan for the area.			X		LNA, PDC, OSEBC, FAB A, 82ABA

#	Actions	Time				Implementors
		Adopted with Plan	On-going	Next 5 Yrs	6 to 20 Yrs	
ED22	Continue to provide seed money as an incentive to assist in renovation which conforms with the <i>Lents Station Development Plan</i> , prepared for ROSE CDC. For instance develop vehicle parking on property identified in the plan.		X			LNA, ROSE, BA, BHCD
ED23	Produce background and promotional material about Lents and the surrounding market area to prospective business and commercial firms.			X		LNA, OSEBC, PDC, FAB, 82ABA, Cable Access

Note: Action Charts were approved by Portland City Council by resolution. They are a starting place. All actions have an identified implementor. They were adopted with the understanding that some will need to be adjusted and others replaced with more feasible proposals. Identification of an implementor for an action is an expression of interest and support with the understanding that circumstances will affect the implementation leader's ability to take action.



Pedestrian-oriented mixed commercial/residential development - possible in various parts of Outer Southeast. (Drawing by Judy Galantha)

Action Chart: Trails, Parks, Open Space and the Environment

#	Actions	Time				Implementors
		Adopted with Plan	On-going	Next 5 Yrs	6 to 20 Yrs	
	PROJECTS					
OS1	Remodel and update restroom facilities in parks where needed and as soon as possible.			X		Parks
OS2	Investigate the possibility of purchasing the last inholding property in Lents Park. When possible this property should be acquired.			X		Parks, BHCD, LNA
OS3	Consider building a community center in Lents Park, complete with covered swimming pool.				X	LNA
OS4	Create more skateboard and bicycle facilities, well-separated from pedestrian facilities, in existing parks.			X		Parks
OS5	Place more lighting in parks.			X		Parks
OS6	Start a mural project in parks prone to graffiti (include Lents Boys and Girls Club).			X		SEUL, LNA, Parks
OS7	Use citizen patrols to enforce animal control and scooping ordinances.			X		LNA, SEUL, BHCD
OS8	Organize neighborhood patrols.			X		LNA, SEUL
OS9	Connect parks to the Springwater Corridor by establishing bike lanes and signs along arterial streets adjoining the corridor.			X		PDOT, Parks, LNA
OS10	Encourage the City to finish development of Ed Benedict Park with the improvements previously committed to: picnic area, ball park, and playground facilities. Follow the recommendations of the Citizens Advisory Committee and the local neighborhood.		X	X		LNA, Parks, BHCD
OS11	Develop Earl Boyles Park as a local neighborhood park complete with picnic and play area.				X	Parks, BHCD
OS12	Preserve and maintain Tenino Park in its current state.	X				Parks
OS13	Replant trees around the periphery of Scott Ridge Park and develop the park for local recreation, while minimizing impervious surfaces. Include a ball park and a play area.			X		LNA
OS14	Require on-site retention for all new development. Otherwise, provide systems that do not dispose of additional storm water in Johnson Creek.		X			BOP, BES
OS15	Study the feasibility of expanding Walker Stadium in Lents Park to seat approximately 10,000 people. Encourage attracting a minor league professional baseball team to this location.		X			PDC, Parks, BA, LNA

#	Actions	Time				Implementors
		Adopted with Plan	On-going	Next 5 Yrs	6 to 20 Yrs	
	PROGRAMS					
OS16	Develop the city-owned property at 111th and Harold in a natural manner that allows for water retention and recreation. Pursue acquisition of the parcel on 111th for the park entrance.			X		Parks, BES
OS17	Utilize the City-owned property off Brookside Drive for water retention and flood control. Connect a trail system from the marsh to Johnson Creek.			X		BES
OS18	Owners of the mill site should be encouraged to preserve existing vegetation and wetlands.		X			LNA, BOP, BES
OS19	Start an aggressive tree planting effort along I-205 in areas not in conflict with future High Capacity Transit.			X		ODOT, FOT
OS20	Encourage the appropriate agencies to utilize the open space under the I-205 overpass between Foster and Woodstock for a transit waiting area with benches, wildflowers and trees.			X		LNA
OS21	Endorse implementation of the <i>East Buttes and Terraces Protection Plan</i> .		X			LNA
OS22	Use accepted methods of vector control which are environmentally compatible or which rely on native species to control pests.		X	X		BES, Parks, MC
OS23	Construct better viewing areas and paths around Beggar's Tick Marsh.			X		Parks, Metro, MC
OS24	Plan for sewers on properties surrounding Beggar's Tick Marsh.			X		BES, BOB
OS25	Require industrial businesses surrounding the marsh to better contain pollutants that threaten the health of the marsh.			X		BES, DEQ
OS26	Install drinking water sources along the Springwater Trail as well as garbage cans, benches and more lighting.			X		Parks
OS27	Install safe crosswalks where the Springwater Trail crosses 82nd Avenue, Foster Road and 136th Avenue. Minimize conflicts between vehicles, particularly trucks, and users on the Springwater Trail.			X		Parks, ODOT, PDOT
OS28	Post signs in the neighborhood that inform citizens about the illegality of dumping, what fines can be incurred, what rewards are available for those who report dumping and who to contact if dumping occurs.			X		LNA, BOB, Metro

#	Actions	Time				Implementors
		On-going	Adopted with Plan	Next 5 Yrs	6 to 20 Yrs	
OS29	Encourage appropriate agencies to place barriers in undeveloped rights-of-ways where illegal dumping occurs to deter further dumping, i.e. 89th north of Crystal Springs Blvd.			X		LNA
OS30	Organize an effort to replant along creeks to control erosion and provide habitat for wildlife.			X		LNA, JCCC USFS, Parks
OS31	Establish biannual cleanups of Johnson Creek.			X		LNA, JCCC
OS32	Request funds from City as part of the <i>Clean Rivers Program</i> for dump boxes for annual clean-up.			X		LNA, BES, JCCC
OS33	Contact businesses and organizations for donations of heavy equipment and labor for clean ups.			X		LNA, OSEBC, FABA, 82ABA
OS34	Request BES to give top priority for sewer hook up to those properties located in the EP and EC zones - specifically those currently on septic and cesspool systems.			X		BES
OS35	Work to halt all sanitary sewer overflow into Johnson Creek by creating adequate drain fields.			X		BES, BOB
OS36	Provide funds to provide equipment, on a one-time basis, for citizen patrols.			X		LNA, BHCD
OS37	Work with the City to fund a study to identify a practical permeable surface which may be used for streets and driveways in the Johnson Creek floodplain. Implement the results of this study as soon as possible.			X		LNA
OS38	Support and implement the recommendations of the Johnson Creek Corridor Committee to insure that approaches are consistent with basin-wide management practices.			X		BOP, BES, BOB

Note: Action Charts were approved by Portland City Council by resolution. They are a starting place. All actions have an identified implementor. They were adopted with the understanding that some will need to be adjusted and others replaced with more feasible proposals. Identification of an implementor for an action is an expression of interest and support with the understanding that circumstances will affect the implementation leader's ability to take action.

Action Chart: Historic Preservation

#	Actions	Time				Implementors
		Adopted with Plan	On-going	Next 5 Yrs	6 to 20 Yrs	
PROJECTS						
HP1	Establish a Lents historical society to: <ul style="list-style-type: none"> • Establish a Lents historical archive. • Research historical events and people in Lents. • Preserve historical documents, photographs and artifacts of Lents. • Create a neighborhood preservation group to act as a clearing house for local labor, expertise and information. 			X		LNA, OHS, FDC, OSEBC, FABAA, 82ABA
HP2	Place historical markers at significant places.			X		LHS, OSEBC, FABAA, 82ABA, LNA
HP3	Publish a brochure on the history of Lents.			X		LHS, OSEBC, FABAA, 82ABA, LNA
HP4	Plan, publish and promote a self-guided tour of historic Lents which can be taken by bike, car or on foot.			X		LHS, OSEBC, FABAA, 82ABA, LNA
HP5	Hold an annual event with a Lents historical theme.			X		LHS, OSEBC, FABAA, 82ABA, LNA
HP6	Provide a seed grant to establish a Lents Historical Society.			X		LNA
PROGRAMS						
HP7	Encourage property owners to restore historic structures.			X		LHS, ROSE, OSEBC, FABAA, 82ABA, LNA
REGULATIONS						
HP8	Create zoning that reinforces small-town historic character.	X				BOP, LNA, BA

Note: Action Charts were approved by Portland City Council by resolution. They are a starting place. All actions have an identified implementor. They were adopted with the understanding that some will need to be adjusted and others replaced with more feasible proposals. Identification of an implementor for an action is an expression of interest and support with the understanding that circumstances will affect the implementation leader's ability to take action.

Policy 5. Urban Design

Use urban design concepts and amenities to preserve and enhance neighborhood livability and to maintain a sense of place.

(Adopted as part of Portland's Comprehensive Plan)

Objectives:

1. Encourage business owners to create and maintain an attractive environment in commercial areas of Lents.
2. Strengthen neighborhood identity.
3. Reduce negative impacts of the I-205 freeway on the surrounding neighborhood.

Action Chart: Urban Design

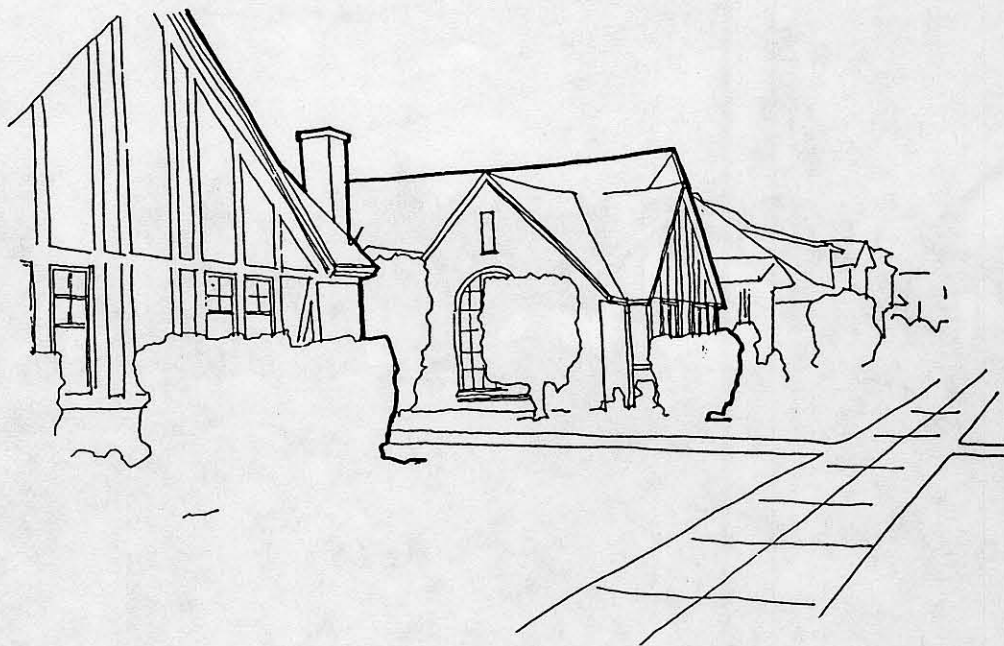
#	Actions	Time				Implementors
		Adopted with Plan	On-going	Next 5 Yrs	6 to 20 Yrs	
	PROJECTS					
D1	Request special street name signs for the neighborhood.			X		LNA
D2	Clearly indicate entry into the Lents neighborhood by signs and landmarks. Encourage PDOT to work with the neighborhood to do this.			X		LNA, Adjacent property owners
D3	Promote the improvement of residential streets to City standards including paving, planter strips, street trees and sidewalks. Encourage PDOT to work with the neighborhood to do this.			X		LNA, BHCD
D4	Encourage the use of extensions, or street tree easements, near the sidewalk on the adjoining private property frontage for street trees in order to improve the area for pedestrian use where right-of-way width is inadequate to provide usable sidewalks. Request a neighborhood-wide study to identify and implement methods for increasing street plantings.			X		LNA
D5	Request a study from ODOT on sound mitigation for neighborhoods near I-205.				X	LNA
D6	Request that ODOT plant vines next to sound walls to reduce graffiti.				X	LNA
D7	Explore the placement of more foot bridges and overpasses over the freeway, to reconnect the two halves of the Lents neighborhood.				X	LNA, ODOT

#	Actions	Time				Implementors
		Adopted with Plan	On-going	Next 5 Yrs	6 to 20 Yrs	
D8	Plant the I-205 parkway with trees and shrubs to reduce air pollution, noise, provide a wildlife corridor between Kelly Butte, Mt. Scott and Johnson Creek and to improve the aesthetic and recreational value of the parkway.			X		ODOT, FOT
D9	Preserve state-owned land near proposed transit stations for future transit use.	X				ODOT
PROGRAMS						
D10	Encourage business owners to provide privately owned open spaces that can be enjoyed by residents and people doing business in the area.			X		LNA, ROSE, FABABA, 82ABA
D11	Encourage business owners to provide public art and associated amenities such as benches, flower boxes and drinking fountains.			X		LNA, ROSE, FABABA, 82ABA
D12	Encourage businesses whose patrons generate litter to provide and maintain trash receptacles at every exit of the business and to regularly clean outdoor areas, parking lots, landscaping areas, adjoining sidewalks on and next to the premises.			X		LNA, FABABA, 82ABA
D13	Encourage businesses near bus stops to request trash receptacles from Tri-Met which can be maintained by the business.			X		TM, LNA, FABABA, 82ABA
D14	Request use of government-owned open spaces in the I-205, Foster-Woodstock couplet as pocket parks and bike rest areas, including benches, bike racks, public restrooms, drinking fountains, trees shrubs and flowers and historical markers.			X		LHS, ROSE, BA
D15	Encourage an efficient arrangement of on-site improvements in all new developments. These should include clustering of development, preservation of wooded and natural areas, buffering of adjacent residential uses, well-defined pedestrian connections and accommodations for the handicapped.	X	X			BOP, LNA, FABABA, 82ABA

Note: Action Charts were approved by Portland City Council by resolution. They are a starting place. All actions have an identified implementor. They were adopted with the understanding that some will need to be adjusted and others replaced with more feasible proposals. Identification of an implementor for an action is an expression of interest and support with the understanding that circumstances will affect the implementation leader's ability to take action.

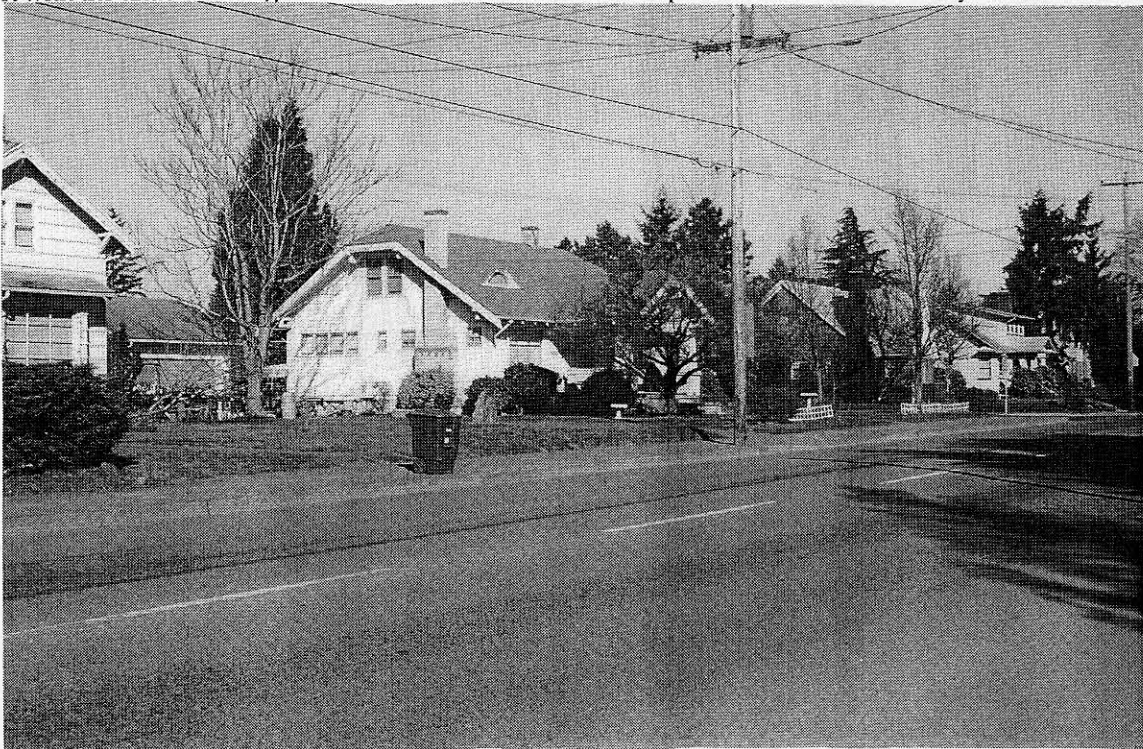
Action Chart: Housing

#	Actions	Time				Implementors
		Adopted with Plan	On-going	Next 5 Yrs	6 to 20 Yrs	
PROJECTS						
H1	Provide information on low interest loans from local banks and PDC.			X		LNA, ROSE, PDC, Fin. Ins
H2	Help non-profit development corporations with recruiting volunteers and fund-raising efforts.		X			LNA, ROSE, FAB, 82ABA, OSEBC, BHCD
H3	Improve or condemn derelict housing in a timely manner.		X			ROSE
H4	Expedite the nuisance abatement and condemnation processes.		X			BOB
H5	Inform landlords & tenants as to the financial benefits of stable, long term tenants.			X		LNA
H6	Simplify access for home owners to financial resources and technical expertise.			X		LNA, PDC, ROSE, Finance Institutions
H7	Seek ways to provide LNA with a housing and livability liaison who has access to professional resources.			X		LNA, SEUL, ONA, BHCD, PHC
H8	Work with the BOB to notify the neighborhood association at quarterly meetings of derelict and dilapidated housing.			X		LNA
H9	Define and identify historically significant housing i.e. year, style, original owner, with signs.			X		LHS



#	Actions	Time				Implementors
		Adopted with Plan	On-going	Next 5 Yrs	6 to 20 Yrs	
	PROGRAMS					
H10	Provide financial assistance and coordination for rehabilitation of historically significant housing.			X		PDC
H11	Provide financial incentive for new buildings that meet small-town historic criteria.			X		PDC, ROSE
H12	Facilitate the sale of surplus government property to non-profit housing developers and concerned citizens.			X		LNA, Govt Owners
H13	Provide neighborhood events aimed at improving the appearance of the neighborhood - cleanups for example.			X		LNA, BHCD, BA
H14	Support the activities of ROSE and other non-profit developers in the provision of housing in the Lents area.		X			LNA
	REGULATIONS					
H15	Zone to allow medium density housing; duplexes, triplexes, row-houses, and Mother-in-Law apartments.	X				BOP
H16	Zone to allow high density housing near transit corridors and commercial areas.	X				BOP

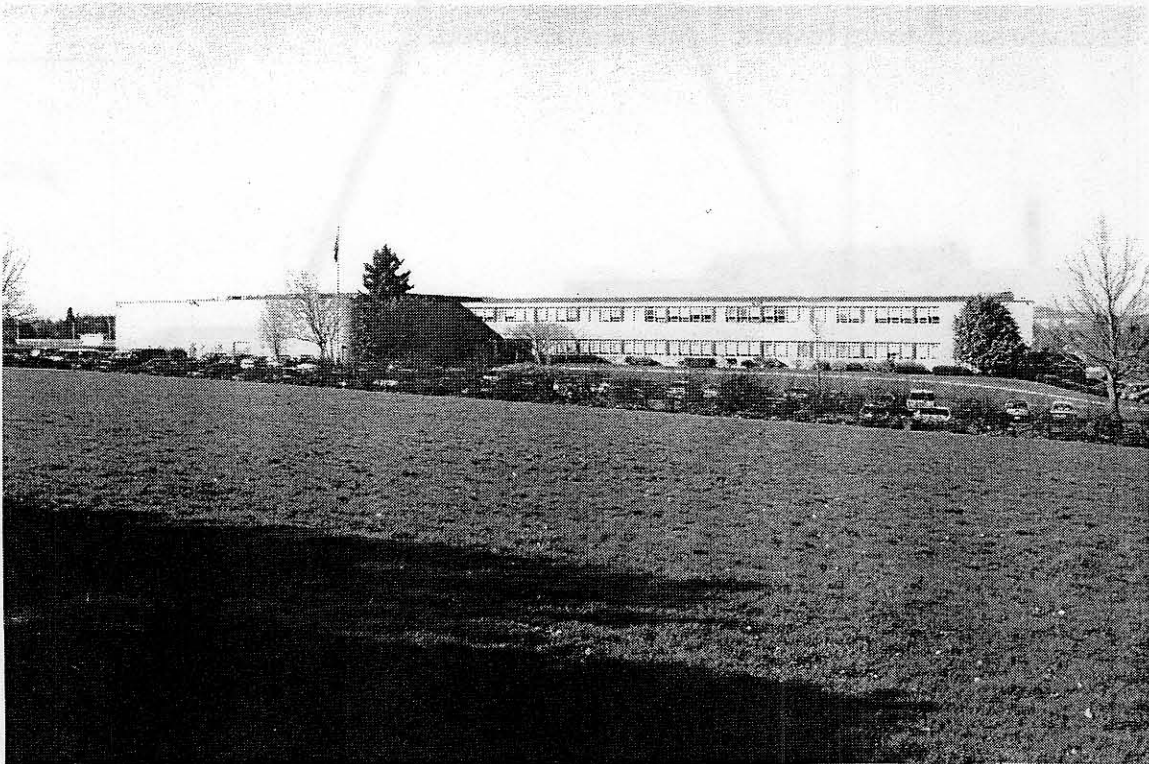
Note: Action Charts were approved by Portland City Council by resolution. They are a starting place. All actions have an identified implementor. They were adopted with the understanding that some will need to be adjusted and others replaced with more feasible proposals. Identification of an implementor for an action is an expression of interest and support with the understanding that circumstances will affect the implementation leader's ability to take action.



Homes along SE 92nd lend a pleasant and distinct neighborhood character to the area.

Action Chart: Neighborhood Livability

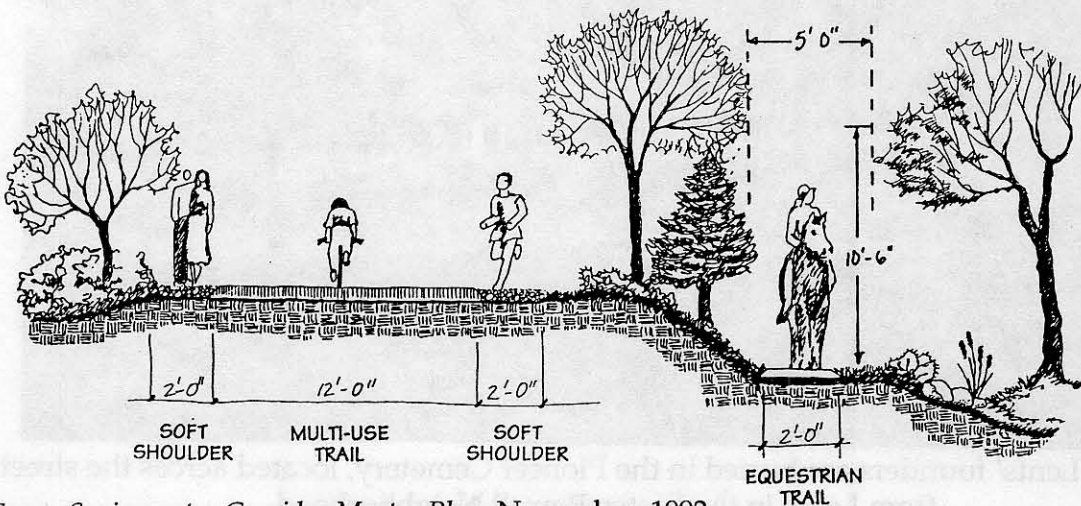
#	Actions	Time				Implementors
		Adopted with Plan	On-going	Next 5 Yrs	6 to 20 Yrs	
	PROJECTS					
L1	Locate community libraries and other community resources to be within walking distance of Old Town Lents and Eastport Commercial node. (Old Town Lents is the area from I-205 to 92nd between Woodstock and Foster.)			X		Various Govt. Agencies and developers
L2	Provide Library service such as Bookmobile regularly visiting Old Town Lents.			X		Multnomah County Library
L3	Implement a community school program at Lents and/or Kelly schools, and coordinate the program with the Boys and Girls Club programs.			X		LNA, PPS, Boys & Girls Club
L4	Request that PDOT create an integrated traffic plan throughout the neighborhood, but especially in old downtown Lents, which accommodates pedestrians, bicycles and motorized vehicular traffic. Heavily lobby for this project.			X		LNA, ROSE, BA, Pvt.



Marshall High School

#	Actions	Time				Implementors
		Adopted with Plan	On-going	Next 5 Yrs	6 to 20 Yrs	
L5	Work with PDOT to provide safe pedestrian routes/crossings throughout the neighborhood. Neighborhood priorities are: 1. I-205 & Foster 2. 92nd near Marshall High School 3. Ellis between Foster & 92nd 4. Springwater Trail crossing at Foster 5. Connections between parks and open spaces, institutions and commercial areas.			X		LNA, ROSE, BA, Pvt, Parks
L6	Create visible housing and livability demonstration projects.			X		ROSE, BOP
L7	Provide management and budget for notification of community about government activity.			X		ONA, SEUL
L8	Screen off-street parking with vegetation.	X	X			BOP
L9	Seek increased lighting on side streets.			X		LNA
L10	Try to ensure that the scale of new development is compatible with the surrounding residential and commercial areas.	X	X			BOP
PROGRAMS						
L11	Prepare recommendations, to be presented to the City, which insure that non-housing activities in designated residential areas are adapted to reinforce the residential character of these areas.			X		LNA
L12	Work with Friends of Trees, Audubon, Parks, private agencies, to establish an aggressive tree planting program throughout the neighborhood.			X		LNA, BA

Note: Action Charts were approved by Portland City Council by resolution. They are a starting place. All actions have an identified implementor. They were adopted with the understanding that some will need to be adjusted and others replaced with more feasible proposals. Identification of an implementor for an action is an expression of interest and support with the understanding that circumstances will affect the implementation leader's ability to take action.



From *Springwater Corridor Master Plan*, November, 1992

Policy 8. Transportation

Improve access to and through Lents using a variety of modes while reducing noise, pollution and safety hazards.

(Adopted as part of Portland's Comprehensive Plan)

Objectives:

1. Reduce conflicts between pedestrians and autos
2. Encourage effective public transportation (i.e. appropriate transit routes to serve ridership) to and within the Lents Neighborhood.
3. Improve unimproved roads and maintain streets throughout in the Lents Neighborhood.

Action Chart: Transportation

#	Actions	Time				Implementors
		Adopted with Plan	On-going	Next 5 Yrs	6 to 20 Yrs	
	PROJECTS					
T1	Request a study of pedestrian crossings in the neighborhood. Priorities are: foster & 96th, Springwater Corridor & Foster, I-205 & Powell and 97th & Foster.			*		LNA, BA
T2	Request that PDOT provide more crosswalks on Foster, especially at 72nd.			X		LNA, BA
T3	Seek funding to implement the Pedestrian District designation in Lents as shown in the Transportation Element of the Comprehensive Plan.			X		LNA, BA
T4	Request an amendment to the Transportation Element to expand the Lents Pedestrian district north to the Boys and Girls Club.		X			BOP, LNA, BA
T5	Seek implementation of traffic calming methods to reduce the speed of vehicles on the streets next to Lents Park and the Boys and Girls Club.			*	X	LNA, BA

* Refer to PDOT immediately

#	Actions	Time				Implementors	
		Adopted with Plan	On-going	Next 5 Yrs	6 to 20 Yrs		
T6	Request review of the signalized intersection at SE 104th and Holgate to improve pedestrian crossings.			*	X	LNA	
T7	Request that PDOT study ways to coordinate the timing of lights on Foster to move traffic efficiently.				X	LNA, BA	
T8	Request removal of the free right turn in the off-ramp at 94th and Foster and explore techniques to slow traffic on off-ramps to improve pedestrian safety and comfort crossing the off ramps.			*	*	LNA, BA, ODOT	
T9	Petition the state to reduce speed on Foster Road east of I-205.			*	X	LNA, BA	
T10	Support additional curb ramps and striping on all corners of the 111th and Foster intersection.			*	X	BHCD	
T11	Provide sidewalk access from the intersection of 111th & Foster to Beggar's Tick Marsh.				X	LNA	
T12	Encourage transit use through the use of incentives to reduce the number of auto trips.		X			Pvt, TM	
T13	Provide support for High Capacity Transit on I-205, with a transit stop at Foster & I-205.				X	LNA, BA, TM	
T14	Transit stops should also be provided on I-205 at Powell and Holgate.					X	TM
T15	Request improvements which create a safe pedestrian walkway and bicycle route on Foster Road, east of I-205 that could hook up with the trail system - Springwater Trail and I-205 bike path.				X	LNA	
T16	Request PDOT to make the Lents Pedestrian District more usable for pedestrians by considering use of curb extensions and other improvements to enhance the environment for pedestrians. Neighborhood priorities are: <ul style="list-style-type: none"> the north side of Foster on the east side of the intersection with 92nd Avenue possibly for a mid-block connection between 92nd & I-205, roughly from the New Copper Penny front door to the off street parking behind the building on the north side of Foster realignment of the southbound off-ramp to Foster. 		X			LNA, BA	
T17	Pave unimproved streets and add sidewalks in areas where there are none, especially between Holgate and Powell on 92nd.				X	LNA, BHCD	

* Refer to PDOT immediately

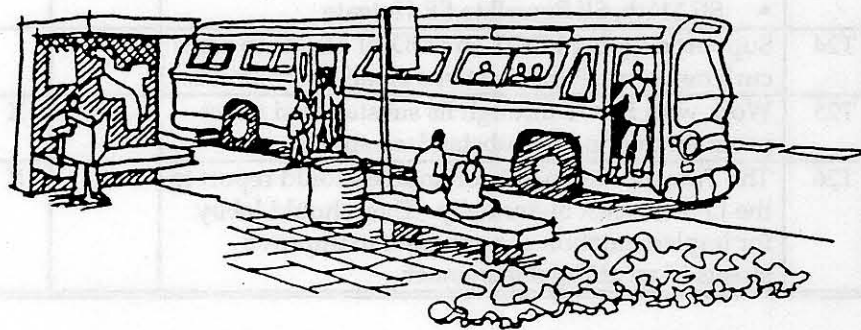
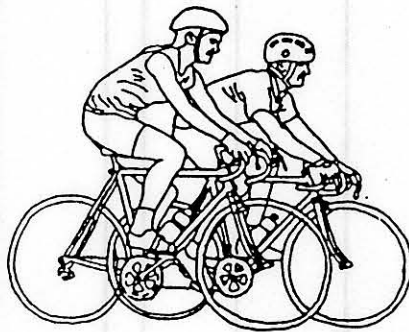
#	Actions	Time				Implementors
		Adopted with Plan	On-going	Next 5 Yrs	6 to 20 Yrs	
T18	Improve neighborhood circulation by establishing a comprehensive system of bike and pedestrian routes by participating in the City's transportation system planning process.			X		LNA, BA, TM
	PROGRAMS					
T19	Encourage the posting of "bike route" signs on designated bike routes. Request striping for bike lanes on Woodstock, Holgate and Foster Road.			* X		LNA
T20	Designate bike ways to connect parks and the existing bike/pedestrian path along I-205 and the Springwater Corridor as part of the Bike Master Plan.			X		LNA
T21	Improve the "bike/pedestrian" crossing sections of the I-205 and Springwater Corridor bike/pedestrian paths.					ODOT, Parks
T22	Advocate for the use of the Springwater Corridor segment in the Lents Neighborhood as a foundation to build a loop system which connects points of interest and employment centers in Lents.			X		LNA, BOP, Parks
T23	Request that PDOT identify strategies for improving the LNA with sidewalks. Neighborhood priorities are: <ul style="list-style-type: none"> • Foster, East of I-205 • 112th, South of Foster • Mt. Scott Boulevard • SE 92nd, SE Powell to Schiller • SE Harold, SE 102nd to SE 112th • SE 104th, SE Powell to SE Harold • SE 103rd, SE Harold to SE Foster • SE Holgate, I-205 to SE 112th • SE Flavel, SE 82nd to 92nd • SE Powell, 98th to 112th • SE 82nd, SE Duke to SE Clatsop • SE 111th, SE Powell to SE Holgate 			* X		LNA, BA
T24	Support ongoing PDOT and ODOT efforts to place curb ramps at all intersections on all major streets.			* X		LNA, BA
T25	Work with PDOT through its substandard street program to improve substandard streets.		X			LNA, BA
T26	The Transportation Subcommittee should report to the LNA at least bi-annually. They should lobby for implementation of a program to improve streets in an affordable manner.		X			LNA, BHCD, BA

* Refer to PDOT immediately

#	Actions	Time				Implementors
		Adopted with Plan	On-going	Next 5 Yrs	6 to 20 Yrs	
T27	Create an information sheet which identifies City, County, state and federal agencies who have control over transportation issues.			*		LNA, BA
T28	Request that PDOT consider implementation of traffic-calming devices around parks and schools in Lents.			*	X	LNA
T29	Add bus shelters throughout Lents, particularly at 82nd and Foster.			*	X	TM
T30	Support completion of a city-wide bicycle plan.				X	LNA
T31	Encourage PDOT to plant wildflowers and trees on unused city right-of-way near Foster-Woodstock and I-205.				X	LNA, BA, BES
T32	Use the Transportation Subcommittee to pull business people together to investigate ways to implement the trolley loop.				X	LNA, BA

* Refer to PDOT immediately

Note: Action Charts were approved by Portland City Council by resolution. They are a starting place. All actions have an identified implementor. They were adopted with the understanding that some will need to be adjusted and others replaced with more feasible proposals. Identification of an implementor for an action is an expression of interest and support with the understanding that circumstances will affect the implementation leader's ability to take action.



Appendix A Key To Implementing Agencies

BA	Business Associations or groups
BES	Bureau of Environmental Services
BHCD	Bureau of Housing and Community Development
BOB	Bureau of Buildings
BOP	Bureau of Planning
CCC	Clackamas Community College
DEQ	Oregon Department of Environmental Quality
FABA	Foster Area Business Association
FDC	Founders Day Committee
FOT	Friends of Trees
JCCC	Johnson Creek Corridor Committee
LHS	Lents Historical Society
LNA	Lents Neighborhood Association
Metro	Metro (formerly Metropolitan Service District)
MHCC	Mount Hood Community College
MC	Multnomah County
ODDA	Oregon Downtown Development Association
ODOT	Oregon Department of Transportation
ONA	Office of Neighborhood Associations
OSEBC	Outer Southeast Business Coalition
Parks	Bureau of Park and Recreation
PCC	Portland Community College
PDC	Portland Development Commission
PDOT	Portland Department of Transportation
PFB	Portland Fire Bureau
PHC	Portland Housing Center
PPB	Portland Police Bureau
PPS	Portland Public Schools
Pvt	Private parties
ROSE	Revitalize <u>O</u> uter <u>S</u> outh <u>E</u> ast Community Development Corporation

SEUL
SOLV
TM
USFS
82ABA

Southeast Uplift
Stop Oregon Litter and Vandalism
Tri-Met
United States Forest Service
82nd Avenue Business Association

Business Associations or groups	BA
Bureau of Environmental Services	BES
Bureau of Housing and Community Development	BHCD
Bureau of Buildings	BUB
Bureau of Planning	BOP
Clackamas Community College	CCC
Oregon Department of Environmental Quality	DEQ
Foster Area Business Association	FABA
Founders Day Committee	FDC
Friends of Trees	FOT
Johnson Creek Corridor Committee	JCCC
Lewis Historical Society	LHS
Lewis Neighborhood Association	LNA
Metropolitan (formerly Metropolitan Area District)	Metra
Mount Hood Community College	MHCC
Multnomah County	MC
Oregon Downtown Development Association	ODDA
Oregon Department of Transportation	ODOT
Office of Neighborhood Associations	ONA
Outer Southeast Business Coalition	OSBCC
Bureau of Park and Recreation	Parks
Portland Community College	PCC
Portland Development Commission	PDC
Portland Department of Transportation	PDOT
Portland Fire Bureau	PFB
Portland Housing Center	PHC
Portland Police Bureau	PBP
Portland Public Schools	PPS
Private parties	Private
Revitalize Outer South East Community Development Corporation	ROSE