

---

**WELCOME PUB TEAM  
WE ARE SUPER EXCITED TO MEET  
YOU!**

Mia Sabanovic, P.E.

[Mia.Sabanovic@portlandoregon.gov](mailto:Mia.Sabanovic@portlandoregon.gov)

Phone: 503-823-6723 (Cell)

Support Services Manager II

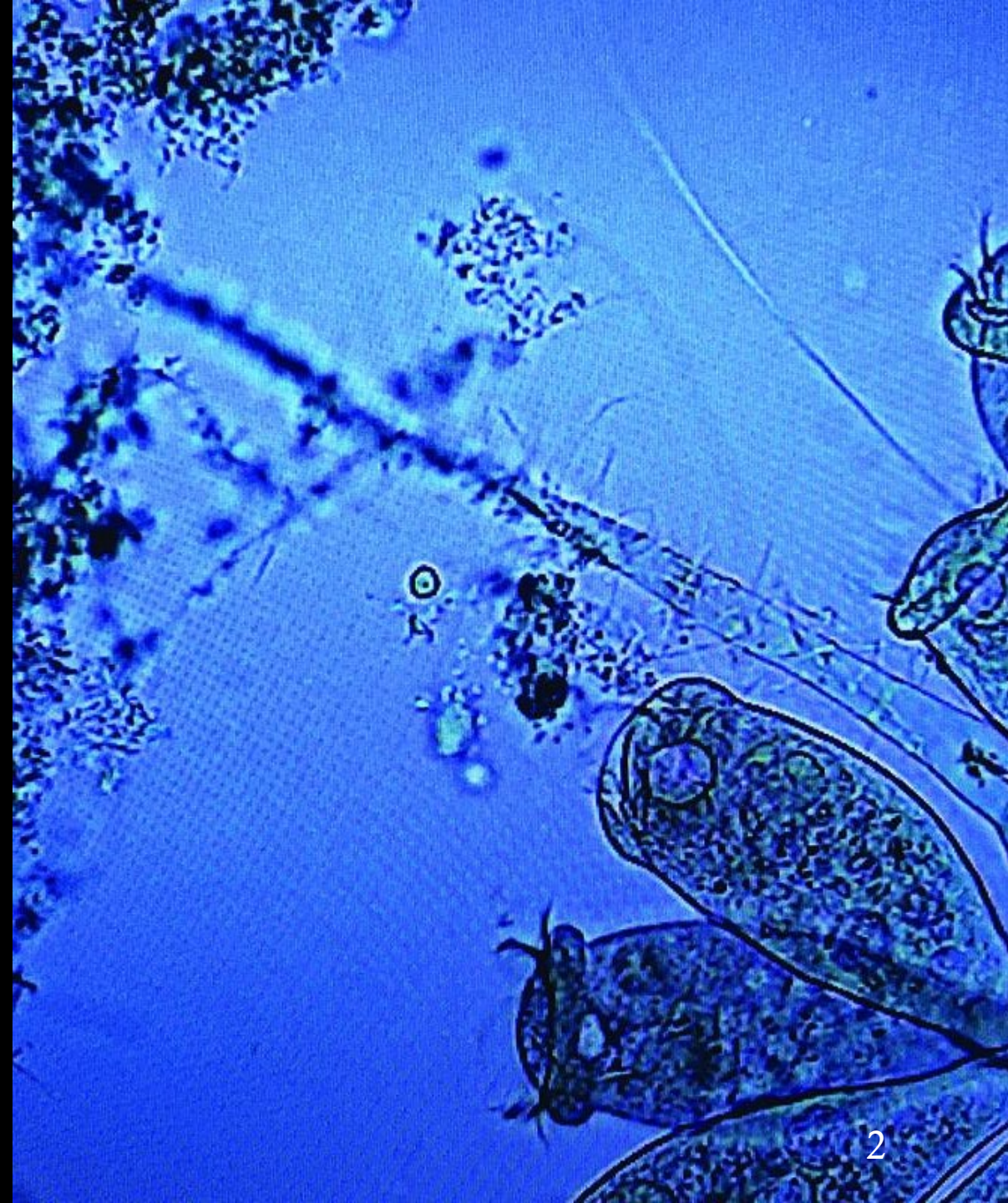
(she/her)

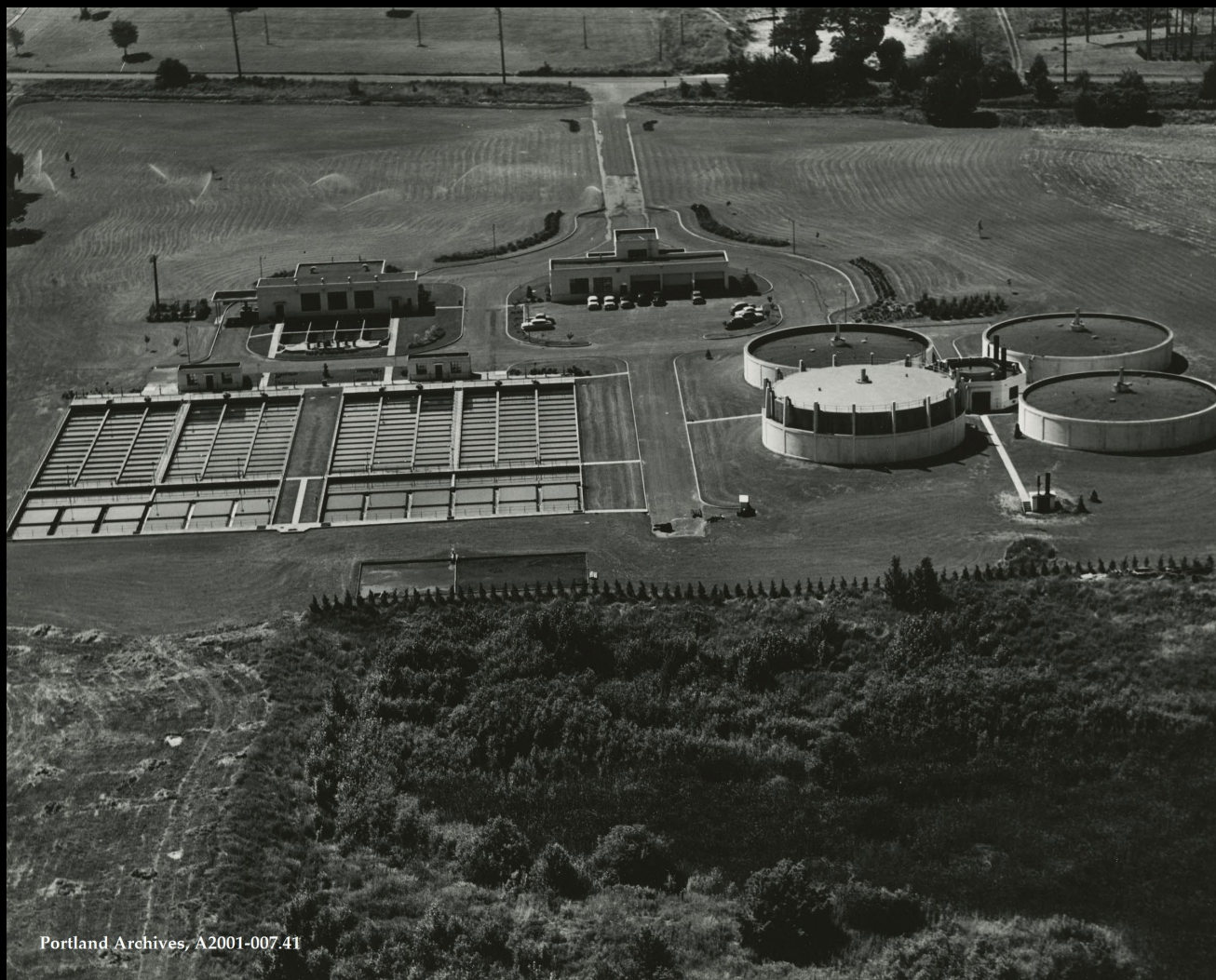
---

---

**WE CLEAN THE WATER,  
GENERATE RENEWABLE  
ENERGY, AND EXTRACT  
VALUABLE NUTRIENTS  
THAT ARE RETURNED TO  
THE SOIL.**

---





Portland Archives, A2001-007.41

1952

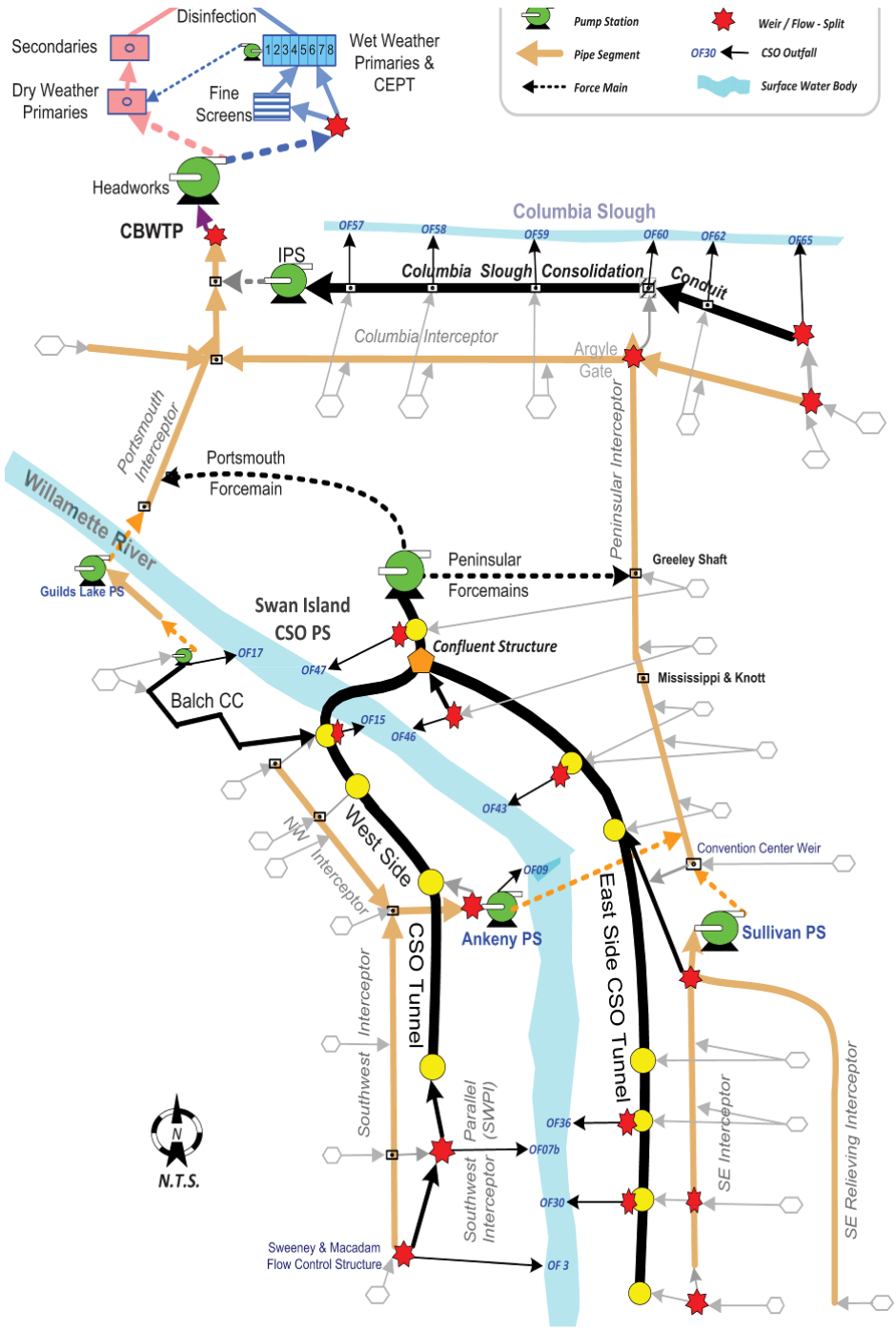
WE HAVE  
GROWN

---



**OUR LARGEST FACILITY IS THE BIGGEST WASTEWATER TREATMENT PLANT IN OREGON AND A VITAL PIECE OF CITY INFRASTRUCTURE. IT TREATS STORMWATER AND WASTEWATER FROM MORE THAN 180,000 PROPERTIES—AN AVERAGE OF 70 MILLION GALLONS A DAY, AND UP TO 450 MILLION GALLONS DURING MAJOR RAIN EVENTS—BEFORE SAFELY RELEASING IT TO THE COLUMBIA RIVER.**

---

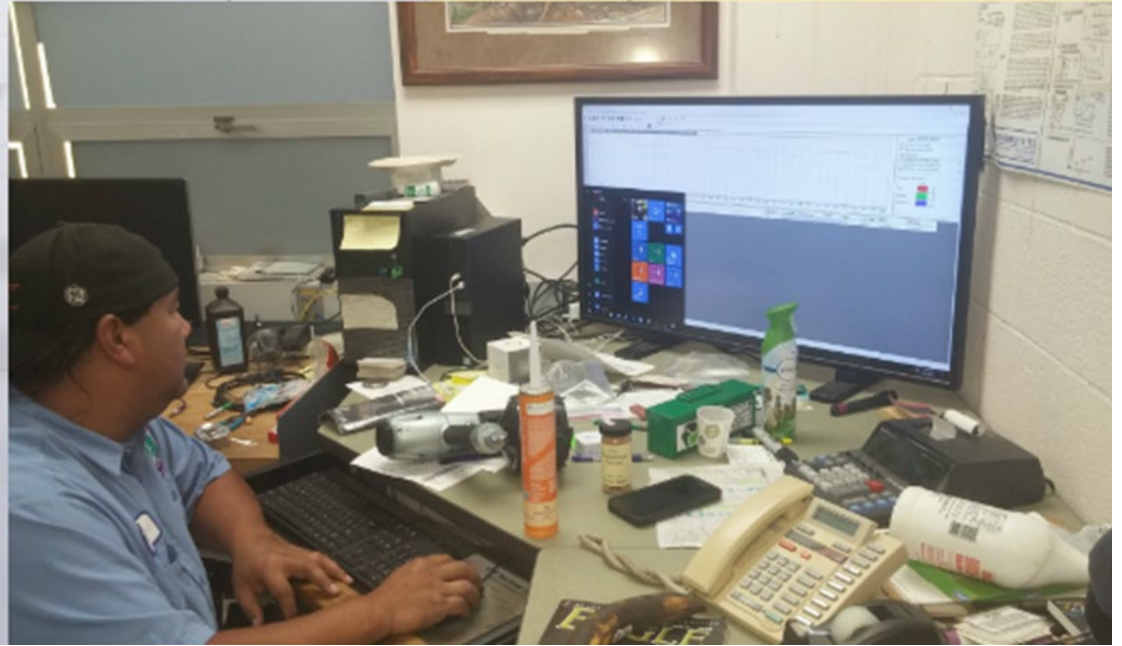


WHILE OUR SYSTEM ASSET PORTFOLIO IS SUBSTANTIAL AND CONTINUALLY AGING, IT IS SUPPORTED BY A CAPABLE AND EXPERIENCED TEAM COMMITTED TO EXCELLENCE.

- 
- \_ PORTLANDERS USE ABOUT 46 GALLONS OF WATER EVERY DAY
  - \_ PLANT SERVES MORE THAN 650,000 CUSTOMERS EVERY HOUR OF EVERY DAY
  - \_ MANAGES AN AVERAGE OF 70 MILLION GALLONS OF WASTEWATER DAILY, BUT ON RAINY DAYS, THE PLANT CAN TREAT UP TO 450 MILLION GALLONS.
  - \_ FY 25/26 OPERATING BUDGET IS \$57 M DOLLAR
  - OUR ENERGY COSTS ARE \$6.3 M DOLLARS

Maintenance	Personal Services \$11.9M	Internal Services \$947k	External Services \$7.6M	Capitol Outlay \$125 k
Operations	Personal Services \$10.7 M	Internal Services \$1.1 M	External Services \$9.1M	
Support Services	Personal Services \$4.3 M	Internal Services \$1.0M	External Services \$2.0M	
Resource Recovery	Personal Services \$672k	Internal Services \$32k	External Services \$5.3M	

*Union*  
**STRONG**



---

TREATMENT AND PUMPING O&M - 31 DCTU MEMBERS, 5  
AFSCME, 98 PCL (LIUNA - CITY LABORERS), 19 CPPW, 4 PROTEC17

WE RUN 24/7. THE FLOW NEVER STOPS, SO NEITHER DO WE.

---

# SECONDARY TREATMENT EXPANSION PROGRAM (STEP)

STEP is the largest upgrade to the Columbia Boulevard Wastewater Treatment Plant since the 1970s. The \$515 million project enables us to meet regulatory permits, enhances the plant's resilience, protects water quality, and provides healthier and effective work environments for essential workers.





THE NEW CLARIFIERS BECAME OPERATIONAL IN DECEMBER 2024, MEETING REGULATORY REQUIREMENTS SET BY THE OREGON DEPARTMENT OF ENVIRONMENTAL QUALITY (DEQ).

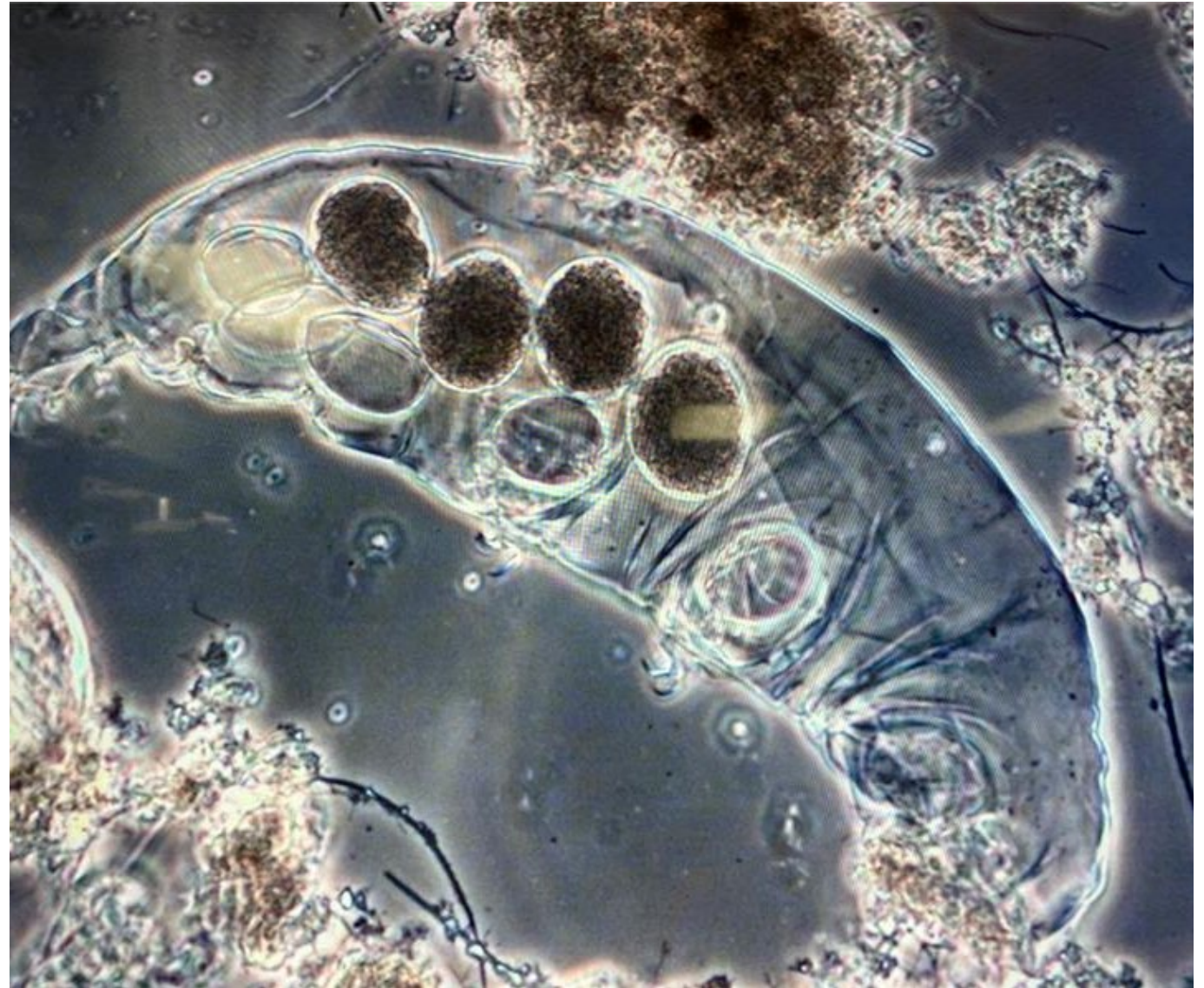
# HOW PUB CAN ALIGN WITH WASTEWATER TREATMENT KNOWLEDGE TO SUPPORT BES

---

- **Strengthen Technical Understanding Through Briefings and Site Engagement:** Today you have new friends!
- **Integrate Wastewater Expertise Into Budget Oversight:** Review how O&M needs, capital renewal, resiliency investments, and regulatory compliance are reflected in the utility's budget. Clearly connect budget requests to system reliability, environmental protection, and workforce needs.
- **Support Long-Term Infrastructure Planning:** Ensure that ratepayer investments match the lifecycle needs of a 24/7 essential public health system
- **Elevate Workforce Knowledge and Workforce Stability:** Highlighting staffing shortages or training needs as budget priorities. Recognizing that stable staffing is a regulatory and public health requirement—not just a budget line.
- **Connect Wastewater Treatment to Public Values:** PUB can help community members understand: How wastewater treatment protects rivers, salmon habitat, and public health. How climate change impacts wet-weather flows, flooding, and infrastructure stress.
- **Promote Equity and Anti-Racist Principles in Utility Services:** PUB can continue its equity mission by ensuring: Wastewater infrastructure investments benefit vulnerable communities. Rate structures remain affordable and fair.

---

Water Bears (tardigrades) are found in wastewater as biological indicators of a healthy treatment process, indicating things like good BOD removal and low ammonia. In space, they are known for their extreme survival capabilities, with experiments showing they can endure radiation, temperature swings, and the vacuum of space.



---

# THANK YOU

Mia Sabanovic former PUB member long  
time PUB friend.

---



---

## LUNCH TRIVIA

**CSO TUNNELS CAN STORE UP TO 119  
MILLION GALLONS OF COMBINED SEWAGE  
AND STORMWATER**

---

---

1. WASTEWATER CAN PREDICT DISEASE OUTBREAKS BEFORE HOSPITALS CAN. SCIENTISTS CAN DETECT SPIKES IN VIRUSES LIKE INFLUENZA OR NOROVIRUS IN SEWAGE DAYS BEFORE CLINICAL CASES RISE.

2. YOUR TOILET FLUSH TRAVELS FASTER THAN YOU THINK. IN MANY SYSTEMS, WASTEWATER FLOWS THROUGH SEWERS AT 2–10 MPH, MEANING YOUR FLUSH MAY REACH A TREATMENT PLANT IN UNDER AN HOUR IN YOU LIVE IN N PORTLAND.

---

---

3. FATBERGS ARE REAL—AND ENORMOUS. LONDON ONCE REMOVED A 130-TON FATBERG, ROUGHLY THE WEIGHT OF A BLUE WHALE. IT WAS MADE OF GREASE, WIPES, AND “OTHER THINGS.”

4. WASTEWATER TREATMENT IS OLDER THAN PIZZA. ANCIENT CIVILIZATIONS LIKE THE INDUS VALLEY (2500 BCE) BUILT SEWAGE AND DRAINAGE SYSTEMS LONG BEFORE MANY MODERN FOODS WERE INVENTED.

5. THE WATER YOU DRINK TODAY HAS BEEN THROUGH AT LEAST 10 HUMANS (ON AVERAGE). EARTH'S WATER CYCLE MEANS “NEW” WATER BASICALLY DOESN'T EXIST—JUST ENDLESSLY CLEANED AND REUSED.

---

---

6. BES TURNS SEWAGE INTO ELECTRICITY. BIOGAS FROM SLUDGE DIGESTION CAN POWER FACILITIES, HOMES, AND IN SOME PLACES, ENTIRE NEIGHBORHOODS.

THE CWTP PLANT HAS A **1.7 MW COGENERATION (CHP)** SYSTEM USING BIOGAS FROM ITS ANAEROBIC DIGESTERS.

RNG / "POOP TO POWER" PROJECT

THE PLANT PRODUCES AROUND **600 MILLION CUBIC FEET** OF BIOGAS ANNUALLY.

RNG PROJECT IS PROJECTED TO **ELIMINATE ~21,000 TONS/YEAR OF GREENHOUSE GAS EMISSIONS.**

---

---

7. WASTEWATER CAN REVEAL... CAFFEINE LEVELS IN A CITY. RESEARCHERS HAVE MAPPED POPULATION CAFFEINE CONSUMPTION USING WASTEWATER SIGNATURES FROM COFFEE BREAKDOWN PRODUCTS.

8. GOLD IS HIDING IN WASTEWATER. TRACE PRECIOUS METALS—FROM INDUSTRY, ELECTRONICS, AND HUMAN EXCRETION—ADD UP TO MILLIONS OF DOLLARS OF RECOVERABLE VALUE GLOBALLY EACH YEAR.

---

---

9. TOILET FLUSH DIRECTION DOESN'T DEPEND ON HEMISPHERE. THE CORIOLIS EFFECT IS TOO WEAK TO DECIDE SWIRLING DIRECTION—PLUMBING DESIGN DOES.

10. NASA RECYCLES ASTRONAUT WASTEWATER INTO DRINKING WATER. SWEAT, BREATH CONDENSATION, AND YOU-KNOW-WHAT ALL BECOME CLEAN WATER AGAIN. ASTRONAUTS CALL IT "YESTERDAY'S COFFEE."

---