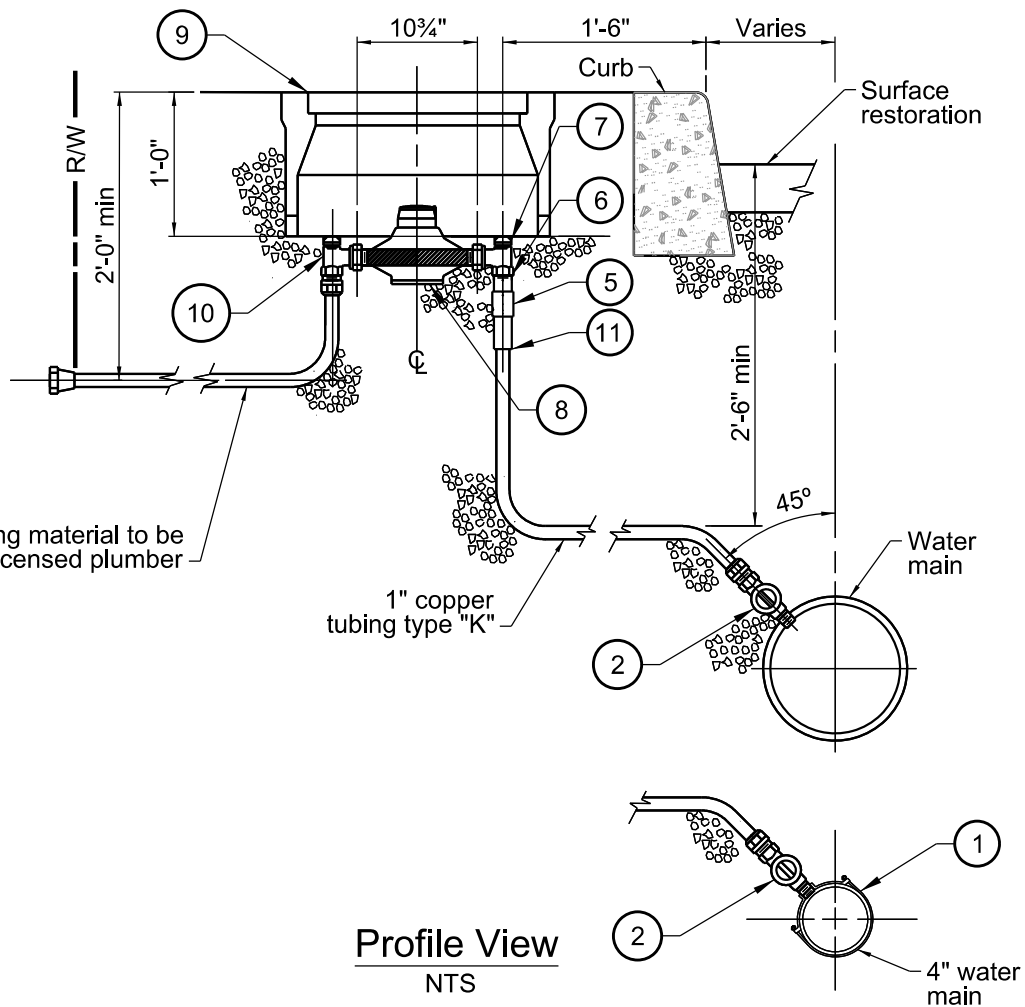
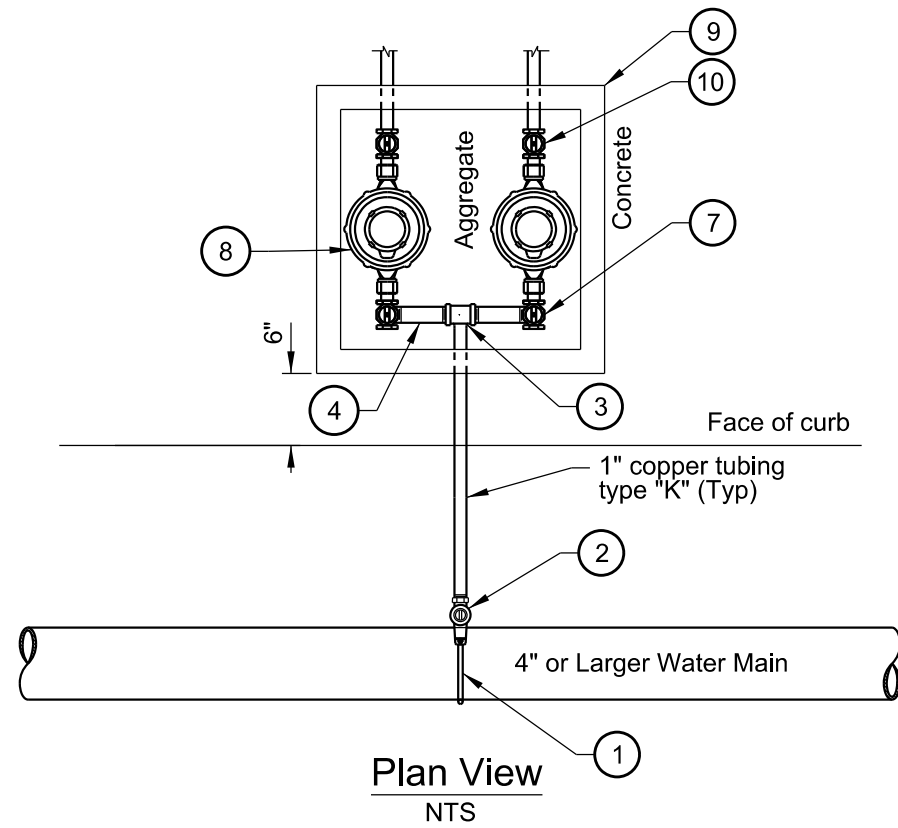


Plot Date: 5/4/2023 10:37:20 AM Filename: C:\CADspace_Local\CAD_Projects\W5VC22.1C_1_Header_Services\Header_Service_Detail P-788_P-787.dgn



Materials List

Item No	Size	Qty	Description
1	varies	1	Service saddle
2	1"	1	1" Corporation stop Muller x CC
3	1"x1"x1"	1	Brass Tee
4	1"x2-1/2"	2	Brass Nipple - threaded
5	1"x3/4"	2	Reducing L
6	3/4"	2	Close Nipple
7	3/4"	2	Angle Meter Stop IP x Meter
8	5/8"x3/4"	2	Meter (for 5/8" meter add A24 adapter)
9	20"x20"	1	Composite Meter Box
10	3/4"	2	Curb stop Meter x IP
11	1"	1	IP x CC adapter

Notes:

1. Install 20" x 20" composite meter box with non-skid surface in furnishing zone.
2. Service line shall maintain 1.5' of vertical separation when crossing other utilities. Vertical separation may be reduced to 6" with mitigation approved by PWB. Provide a sleeve when crossing potential stray current sources, See Standard Drawing P-770
3. Service saddle required if water main is 4" diameter (optional on other sizes.)

The selection and use of this Standard Drawing, while designed in accordance with generally accepted engineering principles and practices, is the sole responsibility of the user.



PORTLAND WATER BUREAU
CITY OF PORTLAND, OREGON

John T. ...
Chief Engineer

Standard Drawing Title

**1" Header Service
Assembly for
Two Meters**

Note:
All material and workmanship shall be in accordance with City of Portland Standard Construction Specifications.

Effective Date

Calc. Book No.

Baseline Report Date

Standard Drawing No.

P-788