

# **PPB Force Analysis Summary Report**

## **Amended Q2 2020**

### **April 01 - June 30, 2020**

Prepared by  
Office of the Inspector General, August 2020  
Amended November 2020





## Executive Summary

- Officers initiated 22,980 calls for service in Q2 2020. These calls resulted in the use of force 0.14% of the time. Of these officer-initiated calls, 20 resulted in a use of Category II-III force (0.09%), and 13 resulted in a use of Category IV force (0.06%).
- Citizens initiated 59,289 calls for service in Q2 2020. These calls resulted in a use of force 0.22% of the time. Of these citizen-initiated calls, 56 resulted in a Category II-III force (0.09%) and 77 resulted in Category IV force (0.13%).
- Of the 4,135 custodies in Q2 2020, 4.09% resulted in a use of force. Category II-III force accounts for about 1.91% of custodies, and Category IV accounts for 2.18% of custodies.
- When compared to Q1 2020, the number of force cases did not change, calls for service decreased by 8%, and custodies decreased by 15% in Q2 2020.
- Sixty-three percent of the use of force applications were resisted handcuffing (29%) and control against resistance (35%).
- Subjects in mental health crisis accounted for 21% of subjects involved in force incidents. More than three quarters (83%) of the applications of force used against subjects in a mental health crisis were the lowest level of reportable force (control against resistance 49%; resisted handcuffing 35%).
- For subjects involved in force incidents:
  - 29% were armed
  - 48% were drug and/or alcohol affected

### Force Facts Q2 2020

Number of cases involving force	166
Number of individuals involved in force incidents	169
Number of officers involved in force incidents	210
Total Force Data Collection Reports (FDCRs) written	327



**Table 1.1: Force types under new 1010.00 policy**

*\*New force types shown in red*

(Control) Holds with Injury	K9 Bite
Aerosol Restraint	Less Lethal
Baton (Nonstrike)	Less Lethal - Aggressive Animal
Box-in	P.I.T.
CEW	Pointing of a Firearm
Control Against Resistance	Resisted Handcuffing
Controlled Takedown	Strikes/kicks
Firearm discharge to end the suffering of a wounded animal	Takedown
Firearm discharge to stop an aggressive animal	Vehicle Ram
Hobble Restraint	
Impact Weapons	

# PPB Force Analysis Summary Report



Prepared By: Office of the Inspector General

Dates Covered: April 01, 2020 - June 30, 2020

## Force Facts:

Number of cases involving force	166
Number of individuals involved in force incidents	169
Number of officers involved in force incidents	210
Total Force Data Collection Reports (FDCRs) written	327

## Subjects of Uses of Force

169

Asian	Male	2	1%	Native	Female	2	1%
Black	Female	8	5%	American	Male	4	2%
	Male	35	21%	Unknown	Male	1	1%
Hispanic	Female	3	2%	White	Female	28	17%
	Male	11	7%		Male	75	44%

## Applications of Force

515

Aerosol Restraint	5	1%	Hobble	5	1%
Baton - Nonstrike	1	0%	K-9 Bite	2	0%
Baton - Strike	0	0%	Less Lethal	7	1%
Box-In	19	4%	Less Lethal - Aggressive Animal	0	0%
CEW	17	3%	P.I.T.	10	2%
Control Against Resistance	178	35%	Pointing of a Firearm	25	5%
Firearm - Animal (aggressive)	0	0%	RAM	0	0%
Firearm - Animal (suffering)	0	0%	Resisted Handcuffing	147	29%
Holds with Injury	1	0%	Strikes/Kicks	11	2%
			Takedown	49	10%
			Takedown - Controlled	38	7%

Beginning August 19, 2017, PPB began reporting the following 10 force types: *Baton - nonstrike, Takedown - controlled, Resisted Handcuffing, Hobble Restraint, Firearm - Animal (suffering), Firearm - Animal (Aggressive), Box-in, Control Against Resistance, P.I.T., and Vehicle Ramming*. On January 19, 2020, *Less Lethal to stop an aggressive animal* was added. These force types are listed in *red font* in the above tables. Figures detailed in this report are not comparable to reports published prior to August 19, 2017.

## Force Type Demographics

	Asian		Black		Hispanic		Native American		Unknown	White	
	Male	Female	Male	Female	Male	Female	Male	Female	Male	Female	Male
Aerosol Restraint	0	0	1	0	0	0	0	0	0	1	2
Baton - Nonstrike	0	0	1	0	0	0	0	0	0	0	0
Baton - Strike	0	0	0	0	0	0	0	0	0	0	0
Box-In	0	1	3	0	0	0	0	0	0	1	6
CEW	0	0	3	0	3	0	0	0	0	0	4
Control Against Resistance	1	4	16	2	5	2	0	0	0	13	32
Hobble Restraint	0	1	1	0	1	0	0	0	0	0	2
Holds with Injury	0	0	1	0	0	0	0	0	0	0	0
K-9 Bite	0	0	1	0	0	0	0	0	0	0	1
Less Lethal	0	0	1	0	0	0	2	0	0	1	3
P.I.T.	0	0	2	0	1	0	0	0	0	0	3
Pointing of a Firearm	0	0	5	0	1	0	1	0	0	1	12
RAM	0	0	0	0	0	0	0	0	0	0	0
Resisted Handcuffing	0	3	12	1	5	0	0	1	12	29	
Strikes/Kicks	0	0	2	0	1	0	0	0	0	0	2
Takedown - Controlled	1	0	4	0	2	0	0	0	0	6	7
Takedown	1	0	10	0	2	0	1	0	0	6	15
Total	3	9	63	3	21	2	4	1	41	118	

Note: This is the type of force used per subject demographic. This is not the number of applications of force used per demographic.

Note: This data does not include crowd control or deadly force events. Refer to later pages for crowd control and deadly force information.

# PPB Force Analysis Summary Report



Prepared By: Office of the Inspector General

Dates Covered: April 01, 2020 - June 30, 2020

## Custody Facts:

Subjects of Force to Custody Ratio: 4.09%

Subjects of Force without Custody: 17

## Total PPB Custodies\*

4,135

Asian	Female	27	Native American	Female	23
	Male	88		Male	57
Black	Female	166	Unknown	Female	8
	Male	715		Male	12
Hispanic	Female	57		Unknown	16
	Male	258	White	Female	672
				Male	2,036

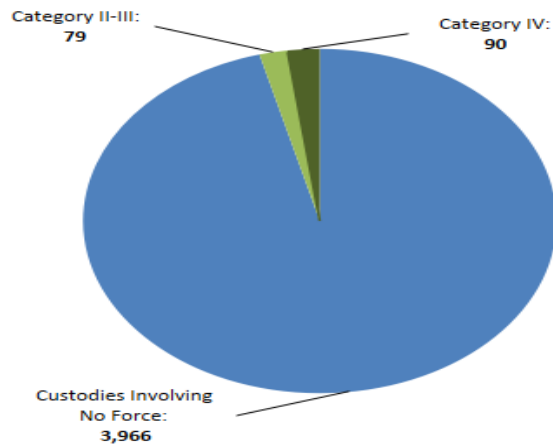
\*Due to policy changes related to Arrest Bookings and General Offenses, the formula used to calculate custodies has changed slightly since Q2 2017.

## Force Data Collection Report Summary:

	This year compared to last year			This quarter compared to last quarter		
	Q2 2020	Q2 2019	Change +/-	Q2 2020	Q1 2020	Change +/-
FDCRs Completed	327	471	-31%	327	363	-10%
Total Cases w/Force*	166	215	-23%	166	166	0%
Total Calls for Service	82,269	93,607	-12%	82,269	89,015	-8%

\*Refers to the count of case numbers where force was used.

**Portland Police Bureau**  
Subjects of Category II-III Force and Category IV Force to Custodies Ratio



Category II-III force was used against 79 people, and Category IV force was used against 90 people while 4,135 people were taken into custody. Category II-III accounts for about 1.91% of custodies, and Category IV accounts for about 2.18% of custodies.

## Category II-III Force

- Holds with Injury
- Takedown
- Strikes/Kicks
- Impact Weapon - Strike
- Less Lethal
- Aerosol Restraint
- CEW
- K-9 Bite
- PIT
- Vehicle Ramming

## Category IV Force

- Baton - Nonstrike
- Takedown - Controlled
- Resisted Handcuffing
- Pointing of a Firearm
- Hobble Restraint
- Firearm - End Suffering Animal
- Box-In
- Control Against Resistance
- Less Lethal - Aggressive Animal

Note: This data does not include crowd control or deadly force events.

## PPB Force Analysis Summary Report



Prepared By: Office of the Inspector General

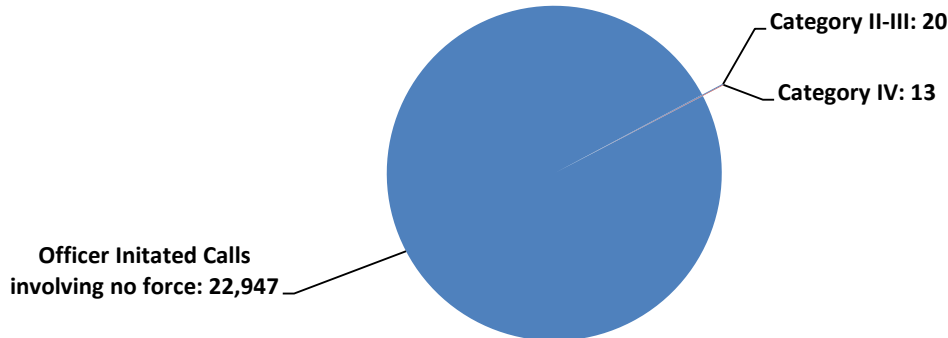
Dates Covered: April 01, 2020 - June 30, 2020

### Calls for Service Facts:

Dispatched	59,289	72%
Self-Initiated	22,980	28%
<b>Total</b>	<b>82,269</b>	<b>100%</b>

### Portland Police Bureau

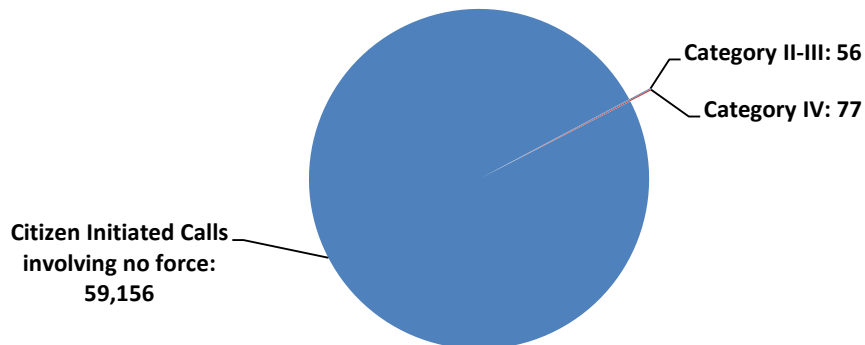
#### Officer Initiated Calls resulting in Category II-III Force or Category IV Force Q2 2020



Officers initiated 22,980 calls for service during this period. Of these officer-initiated calls, 20 resulted in a use of Category II-III force (0.09%) and 13 resulted in a use of Category IV force (0.06%).

### Portland Police Bureau

#### Citizen Initiated Calls resulting in Category II-III Force or Category IV Force Q2 2020



Citizens initiated 59,289 calls for service during this period. Of these citizen-initiated calls, 56 resulted in Category II-III force (0.09%) and 77 resulted in Category IV force (0.13%).

*Note: This data does not include crowd control or deadly force events.*

# PPB Force Analysis Summary Report

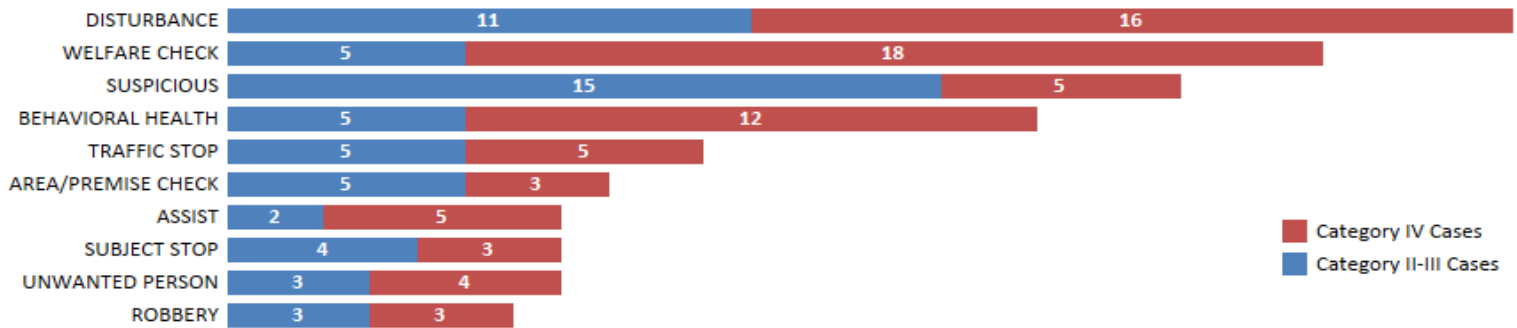


Prepared By: Office of the Inspector General

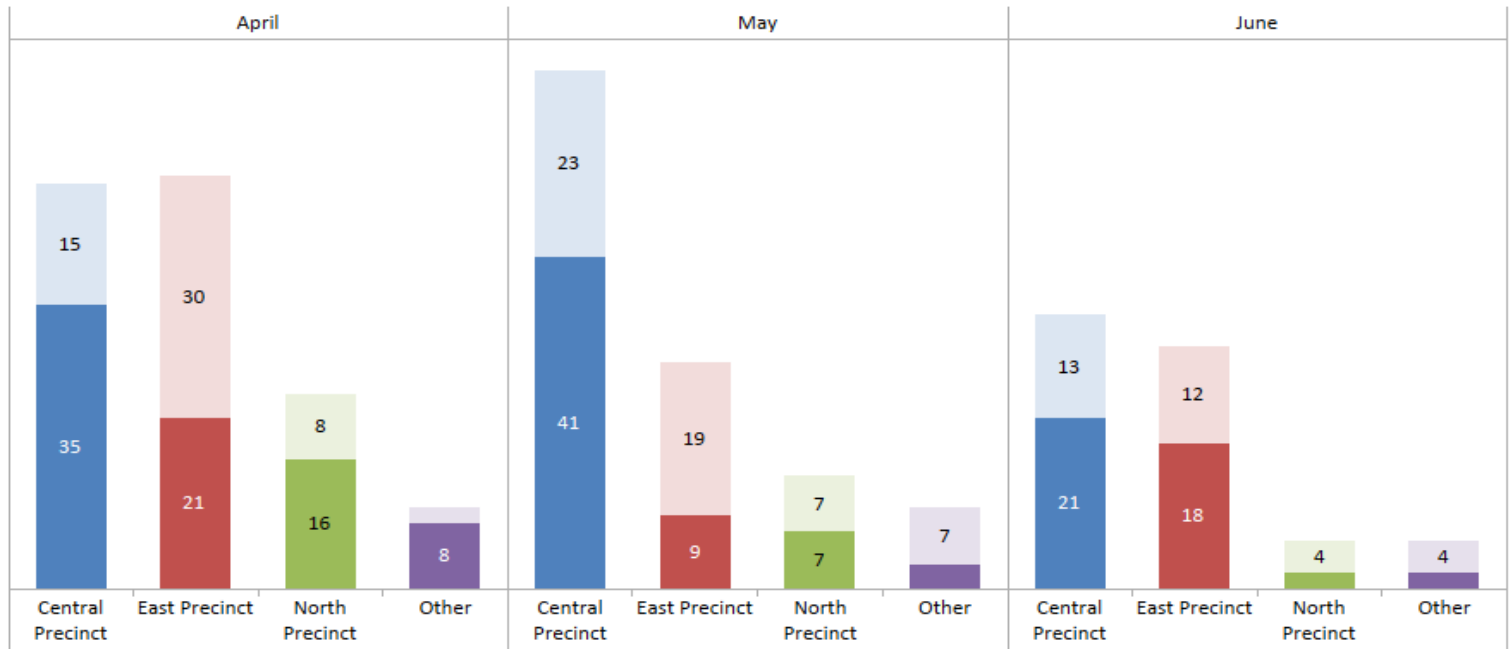
Dates Covered: April 01, 2020 - June 30, 2020

## Summary Charts:

**Portland Police Bureau**  
**Top 10 Initial Call Types Resulting in FDCR Force**  
**2020-Q2**



**Portland Police Bureau**  
**FDCRs Written and Officer Precinct**  
**2020-Q2**  
Dark Bars - Category II - III FDCRs  
Light Bars - Category IV FDCRs



Note: This data does not include crowd control or deadly force events.

## PPB Force Analysis - Central Precinct



Prepared By: Office of the Inspector General

Dates Covered: April 01, 2020 - June 30, 2020

### Force Facts - Central Precinct:

Number of cases involving force	69
Number of officers involved in force incidents	88
Number of persons armed	18
Number of persons in a mental health crisis	21

### Subjects of Uses of Force

69

Asian	Male	1	1%	Hispanic	Male	5	7%
Black	Female	4	6%	Native American	Female	2	3%
	Male	8	12%		Male	1	1%
Hispanic	Female	3	4%	White	Female	12	17%
					Male	33	48%

### Applications of Force

245

Aerosol Restraint	0	0%	Hobble	3	1%
Baton - Nonstrike	0	0%	K-9 Bite	0	0%
Baton - Strike	0	0%	Less Lethal	3	1%
Box-In	3	1%	Less Lethal - Aggressive Animal	0	0%
CEW	1	0%	P.I.T.	0	0%
Control Against Resistance	111	45%	Pointing of a Firearm	5	2%
Firearm - Animal (aggressive)	0	0%	RAM	0	0%
Firearm - Animal (suffering)	0	0%	Resisted Handcuffing	75	31%
Holds with Injury	0	0%	Strikes/Kicks	8	3%
			Takedown	18	7%
			Takedown - Controlled	18	7%

Beginning August 19, 2017, PPB began reporting the following 10 force types: *Baton - nonstrike*, *Takedown - controlled*, *Resisted Handcuffing*, *Hobble Restraint*, *Firearm - Animal (suffering)*, *Firearm - Animal (Aggressive)*, *Box-in*, *Control Against Resistance*, *P.I.T.*, and *Vehicle Ramming*. On January 19, 2020, *Less Lethal to stop an aggressive animal* was added. These force types are listed in red font in the above tables. Figures detailed in this report are not comparable to reports published prior to August 19, 2017.

### FDCRs Written by Precinct, Day, and Time:

Central Precinct 2020-Q2								
	Sunday	Monday	Tuesday	Wednesd..	Thursday	Friday	Saturday	Total
0000-0559	3	0	2	2	3	0	1	11
0600-1159	2	11	8	8	8	5	9	51
1200-1759	3	11	5	9	5	12	2	47
1800-2359	11	0	4	4	1	8	11	39
Total	19	22	19	23	17	25	23	148

Note: This data does not include crowd control or deadly force events.

Beginning August 19, 2017, PPB began reporting the following 10 force types: *Baton - nonstrike*, *Takedown - controlled*, *Resisted Handcuffing*, *Hobble Restraint*, *Firearm - Animal (suffering)*, *Firearm - Animal (Aggressive)*, *Box-in*, *Control Against Resistance*, *P.I.T.*, and *Vehicle Ramming*. These force types are listed in red, italicized font in the above tables. Figures detailed in this report are not comparable to reports published prior to August 19, 2017.



## PPB Force Analysis - East Precinct



Prepared By: Office of the Inspector General

Dates Covered: April 01, 2020 - June 30, 2020

### Force Facts - East Precinct:

Number of cases involving force	65
Number of officers involved in force incidents	68
Number of persons armed	21
Number of persons in a mental health crisis	13

### Subjects of Uses of Force

66

Asian	Male	1	2%	Native American	Male	1	2%
Black	Female	4	6%	Unknown	Male	1	2%
	Male	13	20%	White	Female	12	18%
Hispanic	Male	4	6%		Male	30	45%

### Applications of Force

170

Aerosol Restraint	5	3%	Hobble	2	1%
Baton - Nonstrike	1	1%	K-9 Bite	0	0%
Baton - Strike	0	0%	Less Lethal	3	2%
Box-In	9	5%	Less Lethal - Aggressive Animal	0	0%
CEW	8	5%	P.I.T.	6	4%
Control Against Resistance	41	24%	Pointing of a Firearm	8	5%
Firearm - Animal (aggressive)	0	0%	RAM	0	0%
Firearm - Animal (suffering)	0	0%	Resisted Handcuffing	50	29%
Holds with Injury	0	0%	Strikes/Kicks	3	2%
			Takedown	22	13%
			Takedown - Controlled	12	7%

Beginning August 19, 2017, PPB began reporting the following 10 force types: *Baton - nonstrike, Takedown - controlled, Resisted Handcuffing, Hobble Restraint, Firearm - Animal (suffering), Firearm - Animal (Aggressive), Box-in, Control Against Resistance, P.I.T., and Vehicle Ramming*. On January 19, 2020, *Less Lethal to stop an aggressive animal* was added. These force types are listed in red font in the above tables. Figures detailed in this report are not comparable to reports published prior to August 19, 2017.

### FDCRs Written by Precinct, Day, and Time:

East Precinct 2020-Q2

	Sunday	Monday	Tuesday	Wednesd..	Thursday	Friday	Saturday	Total
0000-0559	4	5	1	1	2	2	3	18
0600-1159	1	2	7	5	1	3	4	23
1200-1759	5	5	12	4	4	5	1	36
1800-2359	7	1	9	2	5	8	0	32
Total	17	13	29	12	12	18	8	109

Note: This data does not include crowd control or deadly force events.

Beginning August 19, 2017, PPB began reporting the following 10 force types: *Baton - nonstrike, Takedown - controlled, Resisted Handcuffing, Hobble Restraint, Firearm - Animal (suffering), Firearm - Animal (Aggressive), Box-in, Control Against Resistance, P.I.T., and Vehicle Ramming*. On January 19, 2020, *Less Lethal to stop an aggressive animal* was added. These force types are listed in red font in the above tables. Figures detailed in this report are not comparable to reports published prior to August 19, 2017.

## PPB Force Analysis - North Precinct



Prepared By: Office of the Inspector General

Dates Covered: April 01, 2020 - June 30, 2020

### Force Facts - North Precinct:

Number of cases involving force	27
Number of officers involved in force incidents	37
Number of persons armed	11
Number of persons in a mental health crisis	2

### Subjects of Uses of Force

29

Black	Male	10	34%	Native American	Male	2	7%
Hispanic	Male	2	7%	White	Female	3	10%
					Male	12	41%

### Applications of Force

63

Aerosol Restraint	0	0%	Hobble	0	0%
Baton - Nonstrike	0	0%	K-9 Bite	0	0%
Baton - Strike	0	0%	Less Lethal	1	2%
Box-In	6	10%	Less Lethal - Aggressive Animal	0	0%
CEW	5	8%	P.I.T.	4	6%
Control Against Resistance	17	27%	Pointing of a Firearm	9	14%
Firearm - Animal (aggressive)	0	0%	RAM	0	0%
Firearm - Animal (suffering)	0	0%	Resisted Handcuffing	9	14%
Holds with Injury	1	2%	Strikes/Kicks	0	0%
			Takedown	4	6%
			Takedown - Controlled	7	11%

Beginning August 19, 2017, PPB began reporting the following 10 force types: *Baton - nonstrike*, *Takedown - controlled*, *Resisted Handcuffing*, *Hobble Restraint*, *Firearm - Animal (suffering)*, *Firearm - Animal (Aggressive)*, *Box-in*, *Control Against Resistance*, *P.I.T.*, and *Vehicle Ramming*. On January 19, 2020, *Less Lethal to stop an aggressive animal* was added. These force types are listed in red font in the above tables. Figures detailed in this report are not comparable to reports published prior to August 19, 2017.

### FDCRs Written by Precinct, Day, and Time:

North Precinct 2020-Q2						
	Sunday	Monday	Tuesday	Wednesd..	Friday	Saturday
0000-0559	3	2	0	1	4	0
0600-1159	0	3	1	1	0	1
1200-1759	1	4	1	0	2	2
1800-2359	5	1	1	4	6	1
Total	9	10	3	6	12	4

Note: This data does not include crowd control or deadly force events.

Beginning August 19, 2017, PPB began reporting the following 10 force types: *Baton - nonstrike*, *Takedown - controlled*, *Resisted Handcuffing*, *Hobble Restraint*, *Firearm - Animal (suffering)*, *Firearm - Animal (Aggressive)*, *Box-in*, *Control Against Resistance*, *P.I.T.*, and *Vehicle Ramming*. On January 19, 2020, *Less Lethal to stop an aggressive animal* was added. These force types are listed in red font in the above tables. Figures detailed in this report are not comparable to reports published prior to August 19, 2017.

## PPB Force Analysis - Out of Policy Cases

Prepared By: Office of the Inspector General

Dates Covered: April 01, 2020 - June 30, 2020



### Out of Policy Cases

#### Out of Policy Cases in Q2 2020

Case	Force Type(s)	Type of Arrest	Type of Event	Number of Officers Who Used Force	Number of Out of Policy Officers	Number of Involved Subjects
1	Takedown	Arrest - Felony	Officer Initiated	1	1	1
	Out of policy 1010.3.1, failure to provide a force warning and 1010.9.1, failure to summon medical services. Case forwarded to Internal Affairs. Subject was a black male.					
2	Takedown, Resisted Handcuffing	Arrest - Felony	Dispatched	4	5	1
	Out of policy 1010.3.1, failure to adequately report a force warning (two officers) and 1010.9.1, failure to summon medical services. Case forwarded to Internal Affairs. Subject was a white female.					

# PPB Force Analysis Summary Report - Deadly Use of Force and Crowd Control



Prepared By: Office of the Inspector General

Dates Covered: April 01, 2020 - June 30, 2020

## Deadly Use of Force:

Deadly Use of Force - Q2 2020		
Date	Subject Demographics	Fatal/Non-Fatal
6/28/2020	White Male	Non-Fatal

## Crowd Control Force Facts:

### Use of Force at Crowd Control Events - Q2 2020

Event Name	Date of Event	Aerosol Restraint	Baton - Nonstrike	Baton - Strike	Box-In	Chemical Agent - CS	Chemical Agent - OC	Control Against Resistance	Hobble	Launchable Impact - 40mm Sponge	Launchable Impact - FN303	Launchable Impact - Marking	Launchable Impact - RBDD	P.I.T.	RAM	Resisted Handcuffing	Sound Light Dist. Device	Strikes/Kicks	Takedown	Takedown - Controlled	Minimum # of Applications*
2020 Floyd Protest	Various Dates	171	2	87	11	205	137	577	1	158	437	233	176	1	0	46	11	12	127	20	2,412

### Number of FDCRs by Count Type

Actual	561
Estimated	69

### \* Number of FDCRs by Count Type: Estimated vs. Actual

When an officer identified an exact number of applications for each force type, the count type was considered an actual count. When an officer did not identify a concrete number of applications for each force type used on their FDCR, the following methodology was applied:

- If an officer provided a numerical estimate (for example, "I pushed a person 3-5 times with my baton"), then this force type was counted using the highest number of the estimate (5 in this example) and considered an actual count.
- If no clear estimate was given (for example, "I pushed multiple persons at multiple locations with my baton throughout the night"), then this force type was counted as one application and considered an estimated count.

The Force Application Count Type is counted per FDCR, not force type.

For the description of the force types listed above, please see the Definitions section of this report and Directive 1010.00. In addition, the following methodology was used for crowd control specific force types:

FN303 Pava/OC Powder 40mm rounds used as an area denial tool were counted as Chemical Agent – OC; Inert RBDD's were counted as Control Against Resistance; Baton/hand used to push an individual who resisted the officer's efforts was counted as Control Against Resistance; Baton/hand used to push an individual that resulted in the individual falling to the ground was counted as Takedown; Each canister was counted for Chemical Agent-CS/Chemical Agent-OC applications.

The following were not considered an application of force: inert smoke canister, smoke SKAT round, baton/hand used to guide an individual who demonstrated no resistance to the officer's efforts.

Arrest Data	May 29 - June 30
Distinct Arrests	378
Distinct People	363

*Distinct Arrests* includes to the total number of arrest bookings (one person per one arrest).

*Distinct People* includes the distinct number of people that were arrested during the time frame (one person can have multiple arrests).

- The stats only include arrests made by PPB where an Arrest Booking report was completed in RegJIN. Arrests made by OSP, MCSO or a Fed Agency are not included in the above stats.
- The arrests are being counted by the "arrest date." In most cases, the arrest occurs on the same date of the demonstration (or the next morning). However, there are a few arrests that resulted from an investigation (ie: arson, laser pointer). These arrests are being counted on the date of the arrest and not the demonstration date (which can be days/weeks earlier).
- The statistics include: arrests linked to a case with a demonstration/protest/riot offense code, reference a protest in the arrest summary or were mentioned in a press release. These stats might vary slightly from the total number of arrests in the press releases due to some arrests not being known at the time of press release or occurring as a result of an investigation. Also, there are a few arrests listed in the press release that were never entered into RegJIN.
- The statistics can include citations where an arrest booking was written in RegJIN but a physical custody never occurred. The use of Arrest Bookings in RegJIN for a citation is inconsistent.

# PPB Force Analysis Report - Subject in Mental Health Crisis



Prepared By: Office of the Inspector General

Dates Covered: April 01, 2020 - June 30, 2020

## Subjects of Uses of Force 36

Black	Female	3	8%	Native American	Female	2	6%
	Male	4	11%	Unknown	Male	1	3%
Hispanic	Female	2	6%	White	Female	11	31%
					Male	13	36%

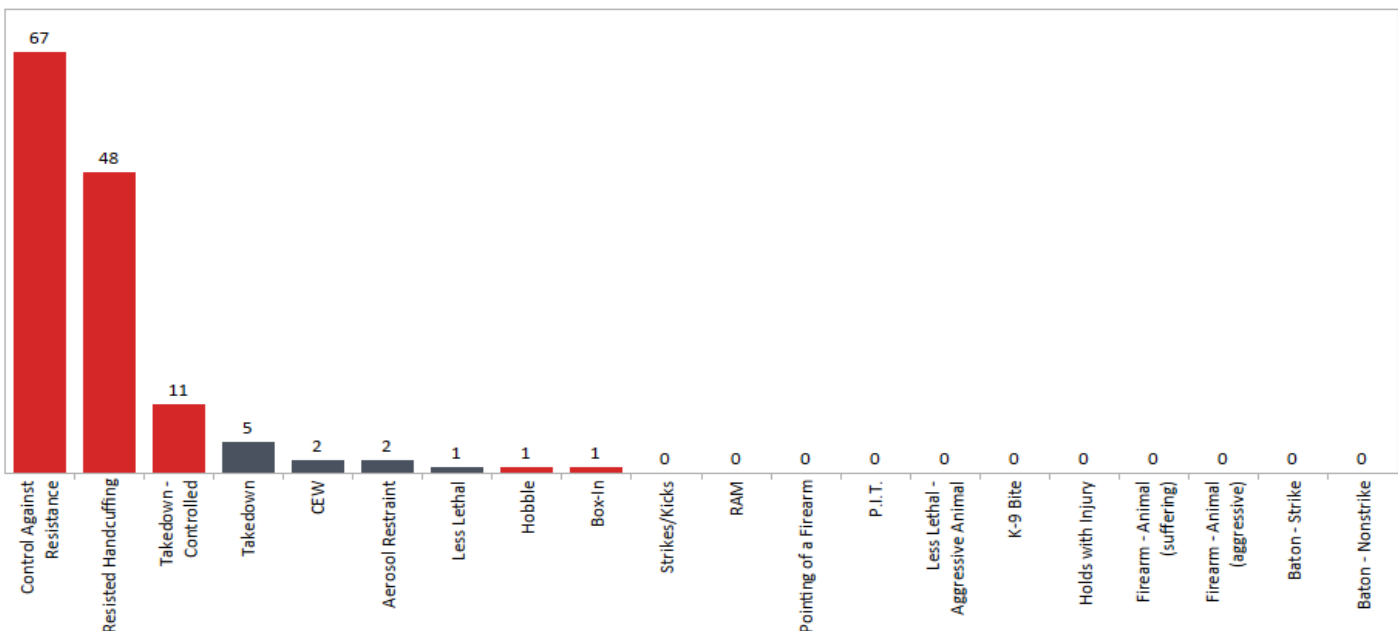
## Applications of Force 138

Aerosol Restraint	2	1%	Hobble	1	1%
Baton - Nonstrike	0	0%	K-9 Bite	0	0%
Baton - Strike	0	0%	Less Lethal	1	1%
Box-In	1	1%	Less Lethal - Aggressive Animal	0	0%
CEW	2	1%	P.I.T.	0	0%
Control Against Resistance	67	49%	Pointing of a Firearm	0	0%
Firearm - Animal (aggressive)	0	0%	RAM	0	0%
Firearm - Animal (suffering)	0	0%	Resisted Handcuffing	48	35%
Holds with Injury	0	0%	Strikes/Kicks	0	0%
			Takedown	5	4%
			Takedown - Controlled	11	8%

Beginning August 19, 2017, PPB began reporting the following 10 force types: *Baton - nonstrike, Takedown - controlled, Resisted Handcuffing, Hobble Restraint, Firearm - Animal (suffering), Firearm - Animal (Aggressive), Box-in, Control Against Resistance, P.I.T., and Vehicle Ramming.* On January 19, 2020, *Less Lethal to stop an aggressive animal* was added. These force types are listed in *red font* in the above tables. Figures detailed in this report are not comparable to reports published prior to August 19, 2017.

\*In this quarter, CEW was applied to one subject in a mental health crisis. No subjects received three or more CEW Cycles.

**Portland Police Bureau**  
Applications of Force  
2020-Q2



Note: This data does not include crowd control or deadly force events.

# PPB Force Analysis Report - Subject Transient



Prepared By: Office of the Inspector General

Dates Covered: April 01, 2020 - June 30, 2020

## Subjects of Uses of Force

79

Black	Female	3	4%
	Male	13	16%
Hispanic	Male	5	6%
Native American	Female	1	1%
	Male	2	3%
White	Female	11	14%
	Male	44	56%

## Applications of Force

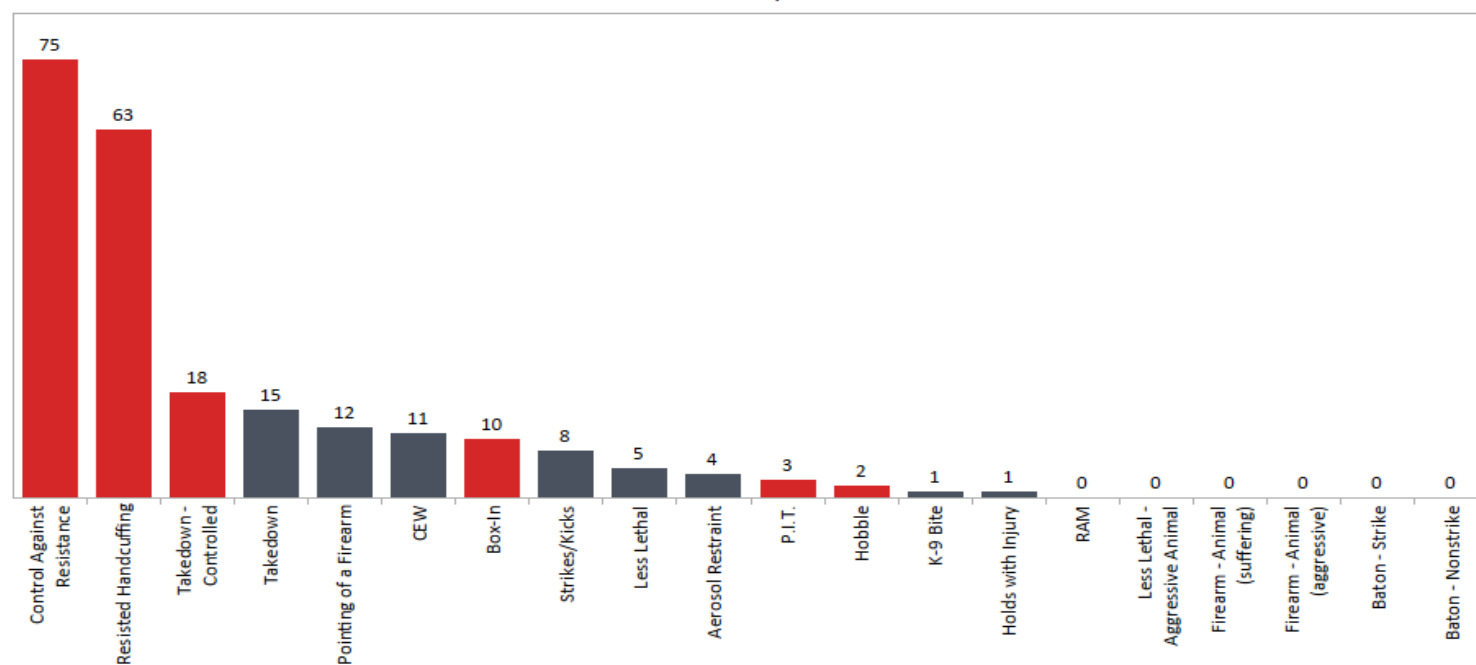
228

Aerosol Restraint	4	2%
Baton - Nonstrike	0	0%
Baton - Strike	0	0%
Box-In	10	4%
CEW	11	5%
Control Against Resistance	75	33%
Firearm - Animal (aggressive)	0	0%
Firearm - Animal (suffering)	0	0%
Holds with Injury	1	0%
Hobble	2	1%
K-9 Bite	1	0%
Less Lethal	5	2%
Less Lethal - Aggressive Animal	0	0%
P.I.T.	3	1%
Pointing of a Firearm	12	5%
RAM	0	0%
Resisted Handcuffing	63	28%
Strikes/Kicks	8	4%
Takedown	15	7%
Takedown - Controlled	18	8%

Beginning August 19, 2017, PPB began reporting the following 10 force types: *Baton - nonstrike, Takedown - controlled, Resisted Handcuffing, Hobble Restraint, Firearm - Animal (suffering), Firearm - Animal (Aggressive), Box-in, Control Against Resistance, P.I.T., and Vehicle Ramming.* On January 19, 2020, *Less Lethal to stop an aggressive animal* was added. These force types are listed in *red font* in the above tables. Figures detailed in this report are not comparable to reports published prior to August 19, 2017.

\*In this quarter, CEW was applied to six transient subjects. One subject received three or more CEW Cycles.

## Portland Police Bureau Applications of Force 2020-Q2



Note: This data does not include crowd control or deadly force events.

# PPB Force Analysis Report - Drug/Alcohol Affected Subjects



Prepared By: Office of the Inspector General

Dates Covered: April 01, 2020 - June 30, 2020

## Subjects of Uses of Force 81

Asian	Male	1	1%	Hispanic	Male	7	9%
Black	Female	3	4%	Native American	Male	3	4%
	Male	11	14%	Unknown	Male	1	1%
Hispanic	Female	3	4%	White	Female	16	20%
					Male	36	44%

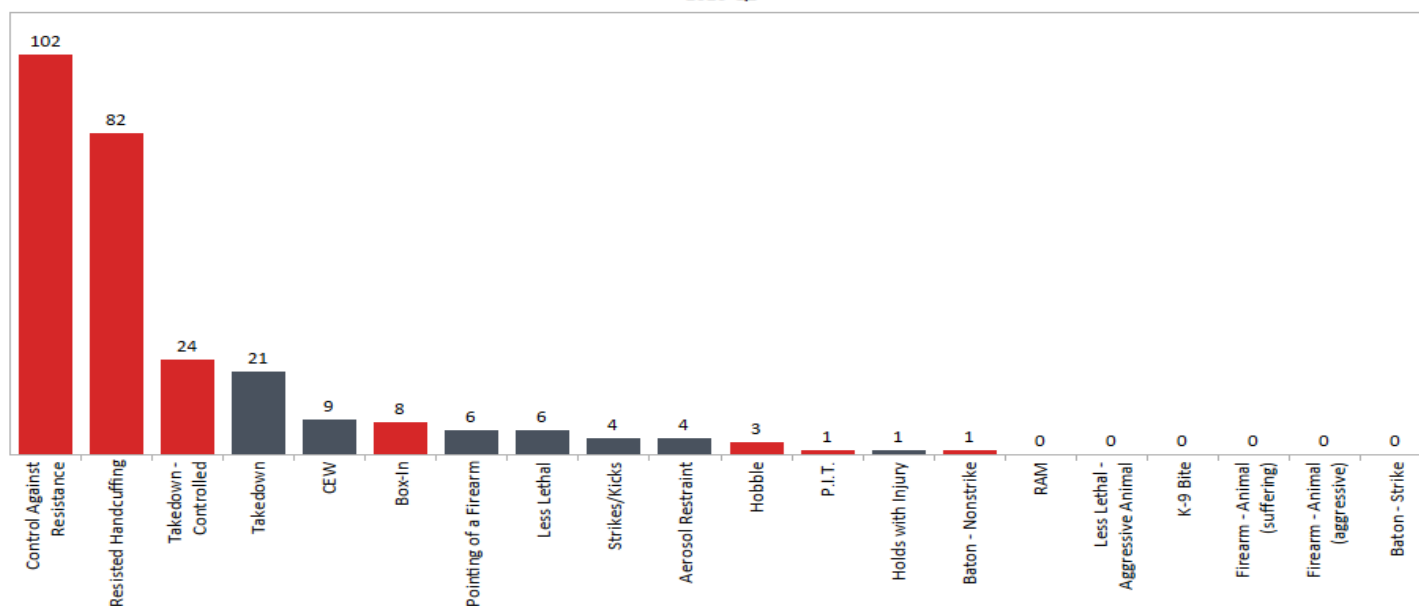
## Applications of Force 272

Aerosol Restraint	4	1%	Hobble	3	1%
Baton - Nonstrike	1	0%	K-9 Bite	0	0%
Baton - Strike	0	0%	Less Lethal	6	2%
Box-In	8	3%	Less Lethal - Aggressive Animal	0	0%
CEW	9	3%	P.I.T.	1	0%
Control Against Resistance	102	38%	Pointing of a Firearm	6	2%
Firearm - Animal (aggressive)	0	0%	RAM	0	0%
Firearm - Animal (suffering)	0	0%	Resisted Handcuffing	82	30%
Holds with Injury	1	0%	Strikes/Kicks	4	1%
			Takedown	21	8%
			Takedown - Controlled	24	9%

Beginning August 19, 2017, PPB began reporting the following 10 force types: *Baton - nonstrike, Takedown - controlled, Resisted Handcuffing, Hobble Restraint, Firearm - Animal (suffering), Firearm - Animal (Aggressive), Box-in, Control Against Resistance, P.I.T., and Vehicle Ramming.* On January 19, 2020, *Less Lethal to stop an aggressive animal* was added. These force types are listed in **red font** in the above tables. Figures detailed in this report are not comparable to reports published prior to August 19, 2017.

\*In this quarter, CEW was applied to six drug and alcohol affected subjects. No subjects received three or more CEW Cycles.

**Portland Police Bureau**  
Applications of Force  
2020-Q2



Note: This data does not include crowd control or deadly force events.



## PPB Force Analysis Report - Subjects with Weapons



Prepared By: Office of the Inspector General

Dates Covered: April 01, 2020 - June 30, 2020

### Armed or Reported Armed Subject Demographics

Subjects of Uses of Force

49

Asian	Male	2	4%	Hispanic	Male	3	6%
Black	Male	8	16%	Native American	Male	2	4%
Hispanic	Female	1	2%	White	Female	5	10%
					Male	28	57%

### Other Information

Individuals with Weapons as % of Overall Individuals	29%
Identified as person in mental health crisis	11
Identified as Under the Influence of Alcohol or Drugs	27
Person identified as transient	26
Weapon Present or Reported but not used	26

*Note: This data does not include crowd control or deadly force events.*

*\*Includes armed or perceived/reported armed*



# PPB Force Analysis Report - Subjects with Weapons



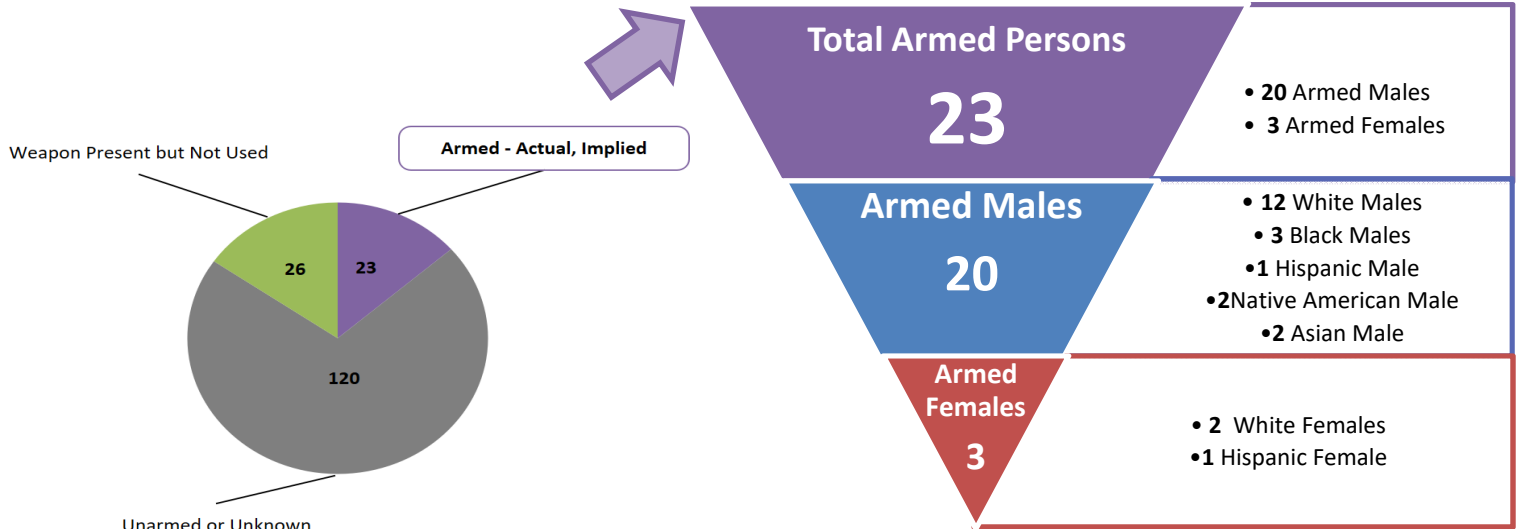
Prepared By: Office of the Inspector General

Dates Covered: April 01, 2020 - June 30, 2020

## Force Charts:

### Number of Armed Persons

April 2020 - June 2020



\*Subject may be counted in more than one category

### Type of Force Applied and Type of Weapon with which Subject was Armed\* 2020-Q2

	Blunt Object	Firearm - Actual or Implied	Knife - Sharp Object	Other - Needles, Bodily Fluids, etc.	Weapon Present or Reported but not Used
Aerosol Restraint	0	0	2	0	0
Baton - Nonstrike	0	0	0	0	0
Baton - Strike	0	0	0	0	0
Box-In	0	0	0	0	4
CEW	2	0	1	0	3
Control Against Resistance	3	1	1	3	8
Hobble Restraint	0	0	0	0	0
Holds with Injury	0	0	0	0	0
K-9 Bite	0	0	0	0	0
Less Lethal	1	0	4	0	2
P.I.T.	0	0	0	0	2
Pointing of a Firearm	1	1	1	0	9
RAM	0	0	0	0	0
Resisted Handcuffing	2	1	0	1	8
Strikes/Kicks	1	0	1	0	0
Takedown	2	1	0	0	3
Takedown - Controlled	1	0	0	1	2
<b>Total</b>	<b>13</b>	<b>4</b>	<b>10</b>	<b>5</b>	<b>41</b>

\*Persons may have more than one type of force used against them.

## Non-Category IV Force

<b>Control Holds with Injury</b>	A control hold with injury event occurs when a member applies physical control to a person and an injury results. The physical control may not have caused the injury but an FDCR will be completed and a force investigation will occur.
<b>Takedown</b>	A takedown occurs when a member moves a subject from an upright position to the ground by applying some amount of force. It is <b>not</b> a takedown if the subject goes to the ground under their own power.
<b>Strikes/Kicks</b>	Strikes/Kicks events occur when a member uses their hands, elbow, knees or feet to strike a subject as an application of force. These are different events from strikes with a baton, which are captured in the "Impact Weapon" category.
<b>Impact Weapon</b>	Uses of a baton or a less lethal shotgun are considered the use of an impact weapon. A baton-impact weapon event occurs when an officer strikes a subject with a baton. A less lethal impact weapon event occurs when a member fires less lethal impact munition at a subject, whether the subject is struck or not.
<b>Aerosol Restraint</b>	An aerosol restraint event occurs when a member uses pepper spray on a person.
<b>CEW</b>	A CEW (Conducted Electrical Weapon) event occurs when a member deploys the CEW to a subject in probe or drive stun mode. CEW uses are counted whether they were effective applications or not.
<b>K-9 Bite</b>	A K-9 bite occurs when a K-9 is deployed and delivers a bite to a subject.
<b>Maximum Restraint</b>	Maximum restraint was discontinued as an approved use of force in April 2015. Numbers are as follows: Hobble: Q1 2014-16, Q2 2014-13; Maximum Restraint: Q3 2014-9, Q4 2014-8, Q1 2015-5, and Q2 2015-1.

## Category IV Force<sup>1</sup>

<b>Boxing In</b>	Boxing-in is a coordinated tactic of positioning police vehicles around a subject's vehicle to stop or prevent the start of a pursuit. When a member performs a Box- in, the driver of the vehicle is considered the subject of the force event.
<b>Baton – non-striking</b>	Non-Striking use of the baton includes the use of the baton as a pry tool.
<b>Controlled Takedown</b>	A controlled takedown is defined as a takedown performed in a completely controlled manner where there is minimal resistance and no injury.
<b>Response to Resisted Handcuffing</b>	Resisted handcuffing is handcuffing that occurs while a subject is resisting, this includes a subject tensing up, or any resistance that requires a member to push the subject's hands together for handcuffing.

<b>Pointing of Firearm</b>	A pointing of a firearm event occurs when a member points a firearm at a subject. This includes handguns, lethal shotguns and rifles. This does not include pointing a CEW or less lethal launcher at a subject.
<b>Hobble Restraint</b>	A hobble restraint is used to control a subject beyond the capability of handcuffs. It is used to secure a combative subject's legs together to prevent kicking. A hobble may also be used on the upper arms and legs of a subject, if the subject has demonstrated the intent to slip their handcuffs to the front.
<b>Control against Resistance</b>	Control against resistance refers to a member's use of physical contact to restrain a struggling individual.
<b>Firearm Discharge – End the suffering of an injured animal</b>	A member may discharge their firearm to end the suffering of a critically injured animal.
<b>Less Lethal – Aggressive Animal</b>	Use of a less lethal weapon (impact munitions, aerosol restraint, or CEW) to stop an aggressive animal.
<b>For additional definition of Force Categories, please refer to Portland Police Bureau Directive 1010.00</b>	

## Measurement Definitions

<b>Individuals Involved in FDCR Force Events</b>	This captures the number of people against whom force was used. If a person has force used against them during more than one force event over the span of the quarter, that person is counted for each time force was used against them. For example, a person having a firearm pointed at them in June and again in July would be counted as two individuals involved in force events in this category.
<b>Total Force Data Collection Reports (FDCRs) Written</b>	When a member uses force reportable on a Force Data Collection Report (FDCR), the member must complete an FDCR. This category captures the number of FDCRs written by members within the quarter of analysis. An FDCR can report more than one type of force used against a single person. This accounts for the difference seen between the number of FDCRs written and the Force Documented on FDCR. One FDCR may contain more than one type of force. For example, an officer who used a strike and a takedown would complete a single FDCR reflecting that both force types were used.
<b>Number of Cases Involving FDCR Force</b>	This is the total number of unique cases (identified by case number) that included an FDCR-level force event. Multiple subjects within the same case may have had force used against them, but the case will only be counted once.
<b>Number of Officers Involved in FDCR Force Incidents</b>	This is the total number of unique officers who reported FDCR-level force during the quarter. Officers may have used force in more than one incident, but are <b>only counted once</b> in this figure.
<b>Subjects of Uses of Force</b>	This is the demographic information (race and gender) of the subjects against whom force was

	used. This is counted the same way as Individuals involved in FDCR Force Events (see above).
Undetermined Individuals	Reflects force that was used against a person whose identity and demographic information was unable to be determined. This occurs most often in protest settings and vehicle pursuits where the dynamics of the event prevent the capture of the person against whom force was used.
Applications of Force	Reflects the <b>total</b> number of times a specific force type was used. Previous reports indicated the aggregate number of times each type of force was reported on an FDCR. This figure represents the number of applications delivered of each force type. Ex: if officer A applied two strikes and officer B applied two strikes, it would be captured as four strikes <b>total</b> , rather than two uses of strikes.
Force Type Demographics	This table reflects the number of times a specific force type was applied to individuals of various demographics. It reflects the aggregate number of uses of each force type on individuals of that race/gender, rather than the number of force applications. Ex: if officer A delivered three strikes to one white male during an incident, it would be counted as one on this table.
Subjects of Force to Custody Ratio	This is the total of Subjects of Uses of Force divided by the total number of custodies. Please see Subjects of Uses of Force and Total PPB Custodies definitions for further information.
Subjects of Force Without Custody	This is the total of the number of people who were the subject of the application of force and were <b>not taken into custody</b> . Generally these incidents include; disengagement after a force event, passengers (with unproven criminal culpability) in high-risk traffic stops, protestors, when officers are unable to make arrests due to crowd size or other factors , subjects detained and released as a consequence of mistaken identity or when probable cause dissipates through the officer's investigation.
Total PPB Custodies	This captures each unique custody per subject and includes the following categories: <ul style="list-style-type: none"> <li>• Arrests (felony and misdemeanor)</li> <li>• Transports to detox</li> <li>• Transports to hospitals</li> <li>• Transports to mental health facilities</li> <li>• Protective Custodies</li> </ul> Additionally the demographic information (race and gender) of the subject taken into custody is also captured here.
Calls for Service / Initial Call Type / Citizen Initiated and Officer Initiated Calls	This data is provided by the Bureau of Emergency Communication (BOEC), it provides the number of calls that officers responded to within the quarter of analysis. The <b>initial call (code) type</b> assigned by

	<p>BOEC is used when determining the Top 10 Initial Call Types.</p> <p><b>Citizen initiated calls</b> are those that citizens call-in to dispatch and are assigned a priority level, (1-9) by dispatch (BOEC). Priority 1 calls are the most urgent and priority 9 calls are the lowest priority.</p> <p><b>Officer initiated calls</b> are those incidents where the officer takes action based on independent observations or information obtained from locations other than BOEC, such as being alerted to crime by a citizen or a vehicle stop for a traffic violation.</p>
<b>FDCRs Written and Officer Precinct</b>	This captures the precinct of assignment for each officer who applied force at the time of the force event. It is counted for each FDCR written.
<b>% of Subjects to Whom a Specific Type of Force was Applied</b>	This is the ratio of the total number of people against whom a specific type of force was applied divided by the total number of individual people against whom force was applied during the review period.
<b>Subject in Mental Health Crisis</b>	This is a total of the people against whom a specific type of force was applied that were identified as being in a mental health crisis at the time of the incident. A mental health crisis is defined as when someone with an actual or perceived mental illness experiences intense feelings of personal distress, thought disorder, obvious changes in functioning, and/or catastrophic life events which may, but not necessarily, result in an upward trajectory of intensity culminating in thoughts or acts that are dangerous to self and/or others.
<b>Rate of Force</b>	This statistic, rate of force, is the total for each type of force, as reported on the FDCR, divided by the total number of unique subjects for the quarter of analysis. This number is reported for each force type and by specific subject demographics in the Types of Force sections of this document.
<b>Taser Over 2 Cycles</b>	<p>This includes the number of times a single subject had three or more Taser cycles applied to them. This <b><i>includes ineffective</i></b> Taser cycles and <b><i>does not</i></b> distinguish the application of the Taser cycle by officer, rather this number is cumulative.</p> <p>A Taser cycle occurs when an officer pulls the trigger of the Taser and delivers energy to a person for duration of up to five (5) seconds. Each additional delivery of energy for five (5) seconds or fraction thereof, is a unique cycle and requires justification by the operator. For example, an application that lasts just one second is one cycle. A subsequent, two second application is a second cycle. An application that lasts six seconds is counted as two cycles.</p>
<b>K9 Cover</b>	<p>A call where the K9 handler is sent on a call to use the dog as an asset, but the dog is not deployed.</p> <p>Example: A high risk traffic stop where the dog is</p>

---

ready to apprehend a fleeing person if needed.

<b>K9 Application</b>	A call where the dog is deployed to be used as a locating, clearing, or apprehension tool.
<b>K9 Capture</b>	A call where the dog is deployed and a suspect is taken into custody based on the use of the dog.
<b>K9 Bite</b>	A call where the dog is sent to bite and apprehend the person at the direction of the handler. This number does not include instances where the dog is sent to bite and apprehend a person but is called off because the person surrenders before the dog reaches them.
<b>Transient</b>	Subjects listed as “Transient” at the time force was used are counted in this category. This category may include subjects who have refused to identify a residence. Because housing is fluid for this population, subjects may be counted who were previously transient but are no longer transient, and vice versa.
<b>Subject Under the Influence of Drugs/Alcohol</b>	Number of <i>unique</i> subjects who were documented as under the influence of either/both drugs/alcohol, or in possession of drugs.

