

*Portland Police Bureau  
2003 Statistical Report*

*Community Policing -  
A Shared Responsibility*



**Vera Katz, Mayor  
Derrick Foxworth, Chief of Police**

# Table of Contents

---

## Portland Police Bureau 2003 Statistical Report

### Table of Contents

Chief's letter .....	1
Accomplishments .....	2-6
Organizational Chart .....	7
Personnel Distribution .....	8
Calls for Service .....	9
Part I Crimes.....	9
Neighborhood Association Maps .....	10-11
Reported Offenses per Neighborhood .....	12-14
Patrol District Maps.....	15-16
Reported Offenses per District .....	17-18
Adult and Juvenile Arrests .....	18
Arrests .....	19
Appendix A .....	20-21

### 2003 Demographics of Portland

Population <sup>1</sup> .....	545,140
Total Sworn Officers .....	991
Total Non-Sworn.....	252
Sworn Officers per 1,000 Population .....	1.82
Square Miles of Portland <sup>2</sup> .....	146.6

Cover photograph © 2004 Chris Greenwood Photography

1. Population Research Center, Portland State University
2. City of Portland, Office of Transportation

Dear Reader:

In August 2003, I was appointed Portland's Chief of Police. I have dedicated 22 years of service to the Police Bureau and it is an honor and privilege to serve.

My commitment as Chief is to promote community policing. This is a shared responsibility between police and citizens for the welfare and improvement of their community. I recognize that enforcement alone is not going to make our city safer. Community policing embraces the value of partnerships.

I have asked Bureau members to recommit themselves to community policing and I ask that the community help in achieving our goal of reducing crime and the fear of crime through involvement in the activities of our officers.

The Bureau has made some organizational changes, and I have made some new command assignments. The result of the reorganization was that Operations Support is now the Services Branch, and we will maintain an Operations Branch and an Investigations Branch. In addition, some of the divisions have shifted under different branches.

The Community Police Organizational Review Team (CPORT) was formed in response to community concerns in the officer involved shooting of Kendra James. I met with CPORT members in October and asked them to consider three goals for the committee: reduce the incidents of officer-involved shootings, improve the ability of the Police Bureau to respond to the community after officer-involved shootings, and ensure that human resources systems support community policing objectives. CPORT's report recommendations will be distributed in March 2004.

The Police Bureau's eVolvment website launched as a way to connect with community members by using the Internet as a means to increase community involvement and awareness. North Precinct and the Portsmouth neighborhood are involved in this pilot project. Community members are able to use the website to talk to each other and post questions on public safety and receive responses from the North Precinct Senior Neighborhood Officer and the Office of Neighborhood Involvement's crime prevention specialist.

During the past year, the Police Bureau has responded to a report from the Police Assessment Resource Center (PARC) on 89 recommendations regarding officer-involved shootings. We have met with our advisory groups and several community organizations to listen to feedback on what concerns or issues they have on the use of deadly force. We are making progress on these recommendations and look forward to working with the community on implementation.

It has been a year full of change. The accomplishments listed in this report illustrate the commitment to community livability.

Sincerely,



DERRICK FOXWORTH  
Chief of Police

### Portland Police Bureau 2003 Accomplishments

#### Strategic Plan

The Strategic Plan, as adopted by City Council in 2003, states the following six Bureau goals.

#### Community goals:

- Reduce crime and the fear of crime
- Improve the quality of life in neighborhoods
- Improve the community and police partnerships

#### Organizational goals:

- Develop and encourage personnel
- Obtain and make effective use of technology and equipment
- Continuously improve work processes

Each Bureau accomplishment relates to one or more of these goals.

### **Reduce crime and the fear of crime**

---

#### **Expansion of Taser program**

The initial Taser pilot program in 2002 was evaluated and found to be a successful tool for officers. The Bureau purchased an additional 50 to distribute to patrol and transit police divisions. The Bureau is currently planning to purchase additional Tasers to make them available to every patrol officer. The Bureau's research found that Tasers are successful at resolving the critical situation 97 percent of the time.

#### **Gang violence missions**

To reduce gang related violence the Bureau implemented the following new strategies this year: the Gang Enforcement Team increased information sharing to precincts; law enforcement sweeps were conducted to enforce local traffic laws, federal and state laws and city ordinances; and saturation missions involving multiple divisions are occurring.

#### **Inter-branch problem solving meetings**

An inter-branch problem solving meeting focusing on auto theft was held in mid-November. The attending group included staff from each precinct, traffic, Planning and Support, and Detectives. The purpose of this initial meeting was to outline the current efforts in auto theft apprehension and vehicle recovery, and to brainstorm for additional ideas and techniques for future use. Future inter-branch meetings will be held on specific crime problems.

#### **Operation Monte Hall**

Investigators uncovered stolen identification, financial records, firearms, narcotics, credit cards and checks, vehicle records, counterfeit currency and financial dossiers on 3,274 individuals in an investigation called Operation Monte Hall. The investigation began in October 2002 and ended in February 2003. It was a joint operation between the Police Bureau's Detective Division, Drugs and Vice Division, Tactical Operation Division's Rapid Response Team and Special Emergency Reaction Team and the Drug Enforcement Agency; U.S. Secret Service; U.S. Postal Service; and the Bureau of Alcohol, Tobacco and Firearms.

#### **Overtime grant for homeland security**

The Bureau was awarded a \$1.3 million grant from the U.S. Department of Justice, Office of Community Oriented Policing Services for overtime primarily associated with homeland security. The grant conditions specify that funds will be used to pay officer overtime that is involved with programs to increase community safety/security and reduce public fear. The grant award date runs from September 1, 2003 through August 31, 2004.

---

### **Roundtable on gang violence**

Mayor Katz convened a panel on November 21 of policy level decision-makers and front line workers from public and private agencies to raise awareness of gang violence in our community. The Portland Police Bureau's Tactical Operations Division and Gang Enforcement Team presented an overview of gang activity in the Portland metropolitan area incorporating information from Gresham, Washington and Clackamas counties, Clark County and Vancouver, Washington, and the I-5 corridor.

### **Senior Neighborhood Officer program expansion**

The Police Bureau announced on February 13 the addition of new Senior Neighborhood Officers (SNO), assigning 23 officers to each of the 96 neighborhoods in Portland. Each SNO is assigned three to nine neighborhoods to focus their problem solving and prevention efforts. By the end of the fall, three additional SNOs were added for a total of 26 SNOs for 2003.

---

### **Improve the quality of life in neighborhoods**

#### **Corrections Offender Record Mask**

The Law Enforcement Data System (LEDS) implemented the corrections offender record process to notify corrections agencies whenever a LEDS query was run for one of their clients. The Corrections Offender Record Mask system has a screen that pops up on the Mobile Digital Computer (MDC) for officers to fill in the information they need and it is then sent to corrections. Central Precinct conducted a pilot project using this mask and found it to be successful. Feedback from corrections sites listed specific examples where corrections officers were able to immediately bring a client back into custody based on the corrections offender record process information. The mask system was initiated Bureau-wide on December 1.

#### **Major event planning**

In 2003, the Police Bureau successfully worked with organizers for several large events such as New Year's, Fat Tuesday, May Day and the Rose Festival. Police and organizers of the events met to strategize on how best to accommodate the organizers' goals while maintaining the safety of the public, the participants and the police. The Bureau and the organizers identified police liaisons that act as a contact to the police and serve as leaders to the organization. These partnerships were successful.

#### **Neighborhood Livability Crime Enforcement Program**

The Neighborhood Livability Crime Enforcement (NLCEP) Program began on June 16 and will run through April 2004. This pilot program in Central Precinct focuses on reducing livability crimes. The NLCEP allows repeat offenders to be booked at the Multnomah County Detention Center for any criminal offense after being designated as one of 35 repeat offenders. Individuals booked through the NLCEP program will receive priority status for social services post arrest. The Community Court judge is participating in the program by facilitating sentencing.

#### **Traffic enforcement**

In April, the Bureau added an additional red light camera, bringing the total to six cameras throughout the city. There are plans to add an additional photo radar van to the existing two vans in 2004. Approximately 40,000 photo radar and 10,000 red light citations were issued in 2003.

---

### **Improve the community and police partnerships**

#### **Advisory Committee Co-Chairs meet**

The co-chairs of the eight Bureau advisory committees met in January and June to discuss public safety issues in the communities they represent. Topics included sharing suggestions on how to enhance police-community relationships; opening dialogue between the advisory committees on an ongoing basis; and looking at strategies on how the Police Bureau and the advisory groups can support each other. The co-chairs agreed to solicit community feedback on how well community policing efforts in their communities are doing.

#### **Community Police Organizational Review Team (CPORT)**

The Community Police Organizational Review Team was formed to guide the Bureau in responding to the community regarding issues raised in the May 5 officer-involved shooting of Kendra James. The Bureau named community and Bureau leaders to CPORT and it met from August through December. CPORT recommended several improvements in analyzing use of force of incidents and creating a use of force board with a citizen member.

### **eVolvment Pilot project completed**

Through a partnership with the Police Bureau, Comcast, One Economy, the non-profit firm of Innovation Partnerships, and other city bureaus, the eVolvment website was launched on January 15, 2003. The eVolvment project is an interactive website focusing on community policing in the Portsmouth neighborhood. It was designed to test how to use Internet technologies to build community. A six-month evaluation showed that more than 70 percent of participants had not been active in their neighborhood before, including a higher number of families with children. Plans are underway to expand the project into more neighborhoods with additional city services.

### **National Night Out**

The Police Bureau coordinated activities for the 2003 National Night Out. There were 128 National Night Out parties held with 86 parties on Tuesday, August 6. Over 13,000 people participated and contributed over 1,000 pounds of emergency food donated to the Sunshine Division. Bureau members including the Chief, Assistant Chiefs, Commanders, precinct command and officers attended events in their precinct areas.

### **Operation Safe Summer**

Operation Safe Summer took place from June 16 through August 23 with 1,434 youth participating. Operation Safe Summer was a collaborative effort between service providers, youth, and parents to give youth in our community a safe and productive summer. Several programs and activities were available for youth and families to participate.

### **Police Assessment Resource Center (PARC) report**

The Police Bureau produced an initial report to City Council on the PARC recommendations. The Bureau implemented several recommendations by revising investigative detective protocols regarding tape recording interviews of involved members, issuing written communication restrictions, establishing on-scene management, and creating command review level protocols. The Bureau also responded to a related set of recommendations, which is under review, from the Albina Ministerial Alliance. A second report to Council is scheduled in May 2004.

### **Regional Economic Crime Investigation Pilot Project**

The Regional Economic Crime Investigation Pilot Project has two components - The Regional Economic Crime Investigations Center Foundation and the Regional Economic Crime Investigation Center. The Foundation gained its 501(c)(3) non-profit, tax exempt status on September 2, 2003. The first three Board members were appointed in May and an additional nine Board members were elected at the September 30 Board meeting. Board members represent the region of Oregon, Washington, Arizona, and Nevada and consist of ten law enforcement and two private sector positions. The business plan is in progress and will be completed for the January 2004 Board meeting.

### **Develop and encourage personnel**

---

#### **Chief's Forum Awards**

On March 19, the Chief's Forum honored the following individuals for their contributions to community policing. The Nathan Thomas Memorial Award was awarded to Detective Terry Wagner. Special Recognition Awards were awarded to Officers Joshua Howery and Craig Mendenhall. The Community Policing Problem Solving Award was awarded to: John Farra, the Homeless Youth Oversight Committee, Officer Jeff Myers, the Ombudsman Services of Elders in Action, Xander Patterson, David Zundel, Jan Weston, Gary Schwindt, and Howard Weiner. A Certificate of Appreciation was awarded to: Officer Steve Andrusko, Officer Cliff Bacigalupi, Officer Jason Christensen, Tonya Dickens, Officer Larry Graham, Ruth Hander, Shirley Holmes, Sgt. Steven Larsen, Arlene Martinez, Diana McClure, Ann Panton, Mary Walker, Geneva McArtor, R. Palmer Moore and Barbara Quinn. The Youth Recognition Certificate was awarded to the Keystone Warriors of the Wattles Boys and Girls Club.

#### **Derrick Foxworth named Chief of Police**

Mayor Vera Katz named Derrick Foxworth Chief of Police on August 29. Chief Foxworth joined the Bureau in 1981 after graduating from the University of Portland. He has served as a street officer, Gang Enforcement Team member, Drugs and Vice officer, public information officer, Northeast Precinct commander, and Assistant Chief of Operations Branch. Chief Foxworth pledged in his swearing in ceremony to renew the agency's commitment to community policing and improve the community/police partnership.

### **Instructor development course**

In 2003, the Bureau offered nine instructor development classes with 163 participants. Participants in the Instructor Development classes develop leadership and presentation skills and at the completion of the training are certified by the Department of Public Safety Standards and Training (DPSST) as police trainers and can serve as an instructor anywhere in the state of Oregon.

### **Medal of Valor**

The Medal of Valor dinner and ceremony was held on May 20. This year eight Bureau members were honored with the highest honor for a Portland Police Officer, the Medal of Valor. Recipients were: Officer Andrew Kofoed, Officer George Weseman, Officer Nathan Wollstein, Sergeant Larry Wooten, Officer Gary Barbour, Retired Officer Joe Savage, Officer Peter Mahuna, and Officer J. Michael Stradley.

### **Web-based crime analysis classes**

Through an intergovernmental agreement involving the City of Portland, the Portland Police Bureau, the City of Milwaukie, the Milwaukie Police Department, and Clackamas Community College, a new and creative solution to police problem-solving was offered: web-based crime analysis classes. Using the Internet, college-level classes have been developed allowing police crime analysts and other students to access the classes from a computer at their offices. These classes will allow police analysts to master skills in crime mapping, identifying crime trends and patterns, and identifying suspects. Nineteen Bureau employees are working their way through the courses, which began on September 29. These courses will open up to all college students starting in January 2004.

### **Obtain and make effective use of technology and equipment**

---

#### **ePPDS and mug shots in patrol cars**

The Bureau is testing access to Multnomah County mug shots in patrol cars through a mobile version of ePPDS. Currently ComNet is working with Motorola to use the 800 MHz system for the photo file transfer. Testing on a single Mobile Digital Computer (MDC) was completed in October, and in November three vehicles began testing the system.

#### **Field reporting**

The Police Bureau has begun work on an electronic field reporting system. Funding for the system is through a federal COPS grant. Electronic field reporting allows police officers in patrol vehicles and other locations to complete and submit required reports to their precinct and the Bureau's records management system, shortening the time between the incident and when the data are available on the computer. A request for proposals (RFP) has been issued and it is expected that a vendor will be selected during the first part of 2004.

#### **Handheld pilot project**

A pilot project to test the effectiveness of using a handheld device to access information systems such as the Law Enforcement Data System (LEDS), Portland Police Data System (PPDS), and Computer Aided Dispatch (CAD) for officers that do not work in a vehicle began in October in the Traffic Division. Several handheld devices have been tested. At the completion of the project there will be an evaluation and recommendation on whether to proceed with a wider deployment within the Bureau.

#### **Integrated Biometric Identification System (IBIS)**

IBIS is the Integrated Biometric Identification System that allows for in-the-field identification verification of individuals legally detained by the Police Bureau by use of an in-the-field handheld fingerprint device. The device will allow officers to obtain fingerprints and a photo image from a subject while still out at a scene or precinct to verify the subject's identity without having to transport. This project is grant funded through the 2002 COPS Technology Initiative and will be implemented in three phases. Phase One is the pilot phase and began in November 2003. Phase Two and Three will extend that capacity to every agency within a four-county region in northwest Oregon and southwest Washington. Phase Two and Three will be conducted in the first quarter of 2004.

#### **Intranet redesigned**

The Police Bureau Intranet was completely rebuilt to provide users with a cleaner interface and to give content editors a more convenient way to update their files and information. The new features include Bureau news at a glance; an online personnel roster; overtime reports with search capabilities and historical data; monthly neighborhood crime statistics; and a Photo[max], photo software application.

### **Portland Online**

The Bureau launched its new website on December 15 as part of Portland Online. The new website integrates CrimeMapper, the PIO Notification system, a city-wide search feature, and hundreds of pages of content describing a wide variety of Police Bureau programs and services. The site also adds a new "Get Involved" content area along with numerous other enhancements, including an "I Want To..." section which links users to on-line reporting forms and services. On-line forms and e-mail are managed using the city's newly developed "Track-It" system.

### **Continuously improve work processes**

---

#### **2002-04 Strategic Plan completed**

The Police Bureau Community Policing Strategic Plan was adopted by the Bureau in spring of 2003. It provides a list of key strategies to support the agency's six goals along with performance measures tied to each goal.

#### **After Action Report committee**

The After Action Report committee was formed in October. The goal of the committee is to standardize the format for the Bureau's After Action reporting system, as well as build a use of force form. The concepts to build the necessary software were completed. After funding is secured software development can take place.

#### **Detective protocols on officer involved shootings**

On September 2, the Detective Division's protocols on officer involved shootings and in-custody death investigations were updated pending the re-writing of the deadly force directive and the Detective Division's standard operating procedures. Immediate changes include: on-scene management will be the Homicide Sergeant; investigating detectives will ask involved members to immediately participate in a voluntary interview; interviews where material facts of the case are discussed will be tape-recorded; written communications restrictions will be issued to those members involved; scene sketches will be prepared and all written information in connection with an officer-involved or custody-in-death will be part of the official Bureau file.

#### **Independent Police Review profanity report**

In November, the Independent Police Review Division released their report titled "Officer Use of Profanity," a review conducted by the Citizen Review Committee and the Independent Police Review Division. The report provided the following recommendations: clarify the wording of the directive that governs the use of profanity by officers, introduce a reporting requirement for the use of profanity by officers, and standardize training on the use of profanity. The Bureau accepted and implemented all three recommendations prior to the report's release, in the updated Manual of Policy and Procedure released in September.

#### **Manual of Policy and Procedure**

The latest edition of the Manual of Policy and Procedures was distributed in September 2003. This edition of the manual includes new directives on roles for Highland and Honor Guard, investigative protocols for stolen vehicles, procedures for chemical and biological agents, and the use of Tasers. In addition, the courtesy directive included major revisions that prohibited the use of profanity.

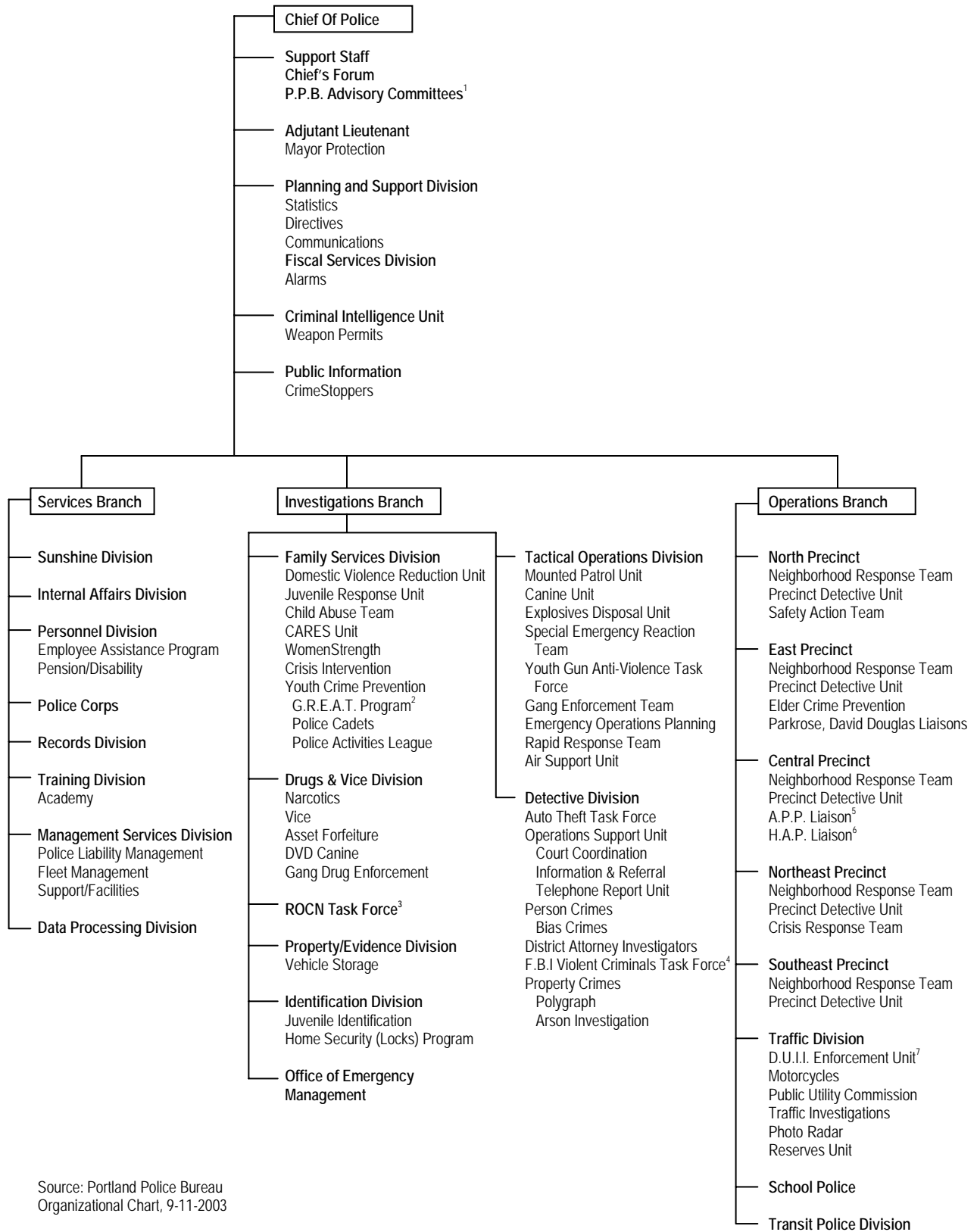
#### **Monthly performance measures refinements**

Each division of the PPB inputs data to a monthly performance measure status report. In 2003, this report became available on the Intranet. Another addition is the preparation and analysis of the monthly reporting and mapping of major crimes and shots fired citywide and per precinct. This data tracks and addresses neighborhood livability issues and allows the Chief, and other Bureau members, to track important Bureau-wide activities.

#### **Position allocation system**

Work began in 2003 to create a new database to support the Bureau's personnel allocation system; to better integrate its data with City data; and to improve access to data on positions throughout the Bureau. Partners in the project include the Police Bureau, Bureau of Human Resources and the Bureau of Technology Services. The system is scheduled to be operation in 2004.





Source: Portland Police Bureau  
Organizational Chart, 9-11-2003

Footnotes: See page 21

## Personnel Distribution

8

	Chief & Asst. Chiefs	Cmdr.	Capt.	Lt.	Sgt.	Det.	Crmlst.	Officer	Total Sworn	Total Non Sworn	Total
<b>Chief's Branch</b>											
Chief's Office	4	0	0	2	1	0	0	4	11	8	19
Criminal Intelligence	0	0	0	1	1	0	0	4	6	1	7
Planning & Support	0	0	0	0	0	0	0	3	3	12	15
Fiscal Services	0	0	0	0	0	1	0	0	1	15	16
<b>Operations Branch</b>											
Central Precinct	0	1	0	3	14	4	0	105	127	12	139
East Precinct	0	1	0	3	13	4	0	123	144	6	150
North Precinct	0	1	0	2	13	3	0	53	72	6	78
Northeast Precinct	0	1	0	3	13	4	0	97	118	9	127
Southeast Precinct	0	1	0	3	13	4	0	109	130	7	137
School Police	0	0	1	0	2	0	0	15	18	1	19
Traffic	0	1	0	1	6	0	0	41	49	2	51
Transit Division	0	0	1	2	3	0	0	15	21	1	22
<b>Investigations Branch</b>											
Detective Division	0	1	0	3	10	57	0	17	88	18	106
Drugs & Vice Division	0	0	1	2	7	0	0	29	39	9	48
Emergency Management	0	0	0	1	1	0	0	0	2	0	2
Family Services	0	0	1	0	3	8	0	12	24	4	28
Identification Division	0	0	1	0	2	0	17	0	20	25	45
Property/Evidence	0	0	0	1	0	0	0	0	1	14	15
ROCN Task Force	0	0	1	0	0	1	0	0	2	0	2
Tactical Operations	0	1	0	3	7	3	0	41	55	4	59
Youth Crime Prevention	0	0	0	0	1	0	0	2	3	3	6
<b>Services Branch</b>											
Data Processing	0	0	0	0	0	0	0	0	0	7	7
Internal Affairs	0	0	1	1	8	0	0	0	10	2	12
Management Services	0	0	0	0	0	0	0	1	1	4	5
Personnel Division	0	0	1	1	2	0	1	5	10	4	14
Police Corps	0	0	0	0	0	0	0	0	0	0	0
Records Division	0	0	0	0	0	0	0	0	0	74	74
Sunshine Division	0	0	0	0	1	0	0	0	1	0	1
Training Division	0	0	1	1	3	0	0	15	20	4	24
Trainees	0	0	0	0	0	0	0	15	15	0	15
<b>Totals</b>	<b>4</b>	<b>8</b>	<b>9</b>	<b>33</b>	<b>124</b>	<b>89</b>	<b>18</b>	<b>706</b>	<b>991</b>	<b>252</b>	<b>1,243</b>

Source: Portland Police Bureau Organizational Chart, 8-19-2003.

Budgeted Authority Positions (Note: While Police Corps was staffed, at this time there was no budget authority for the positions.)

Footnotes: See page 21, Personnel Distribution

## Calls for Service

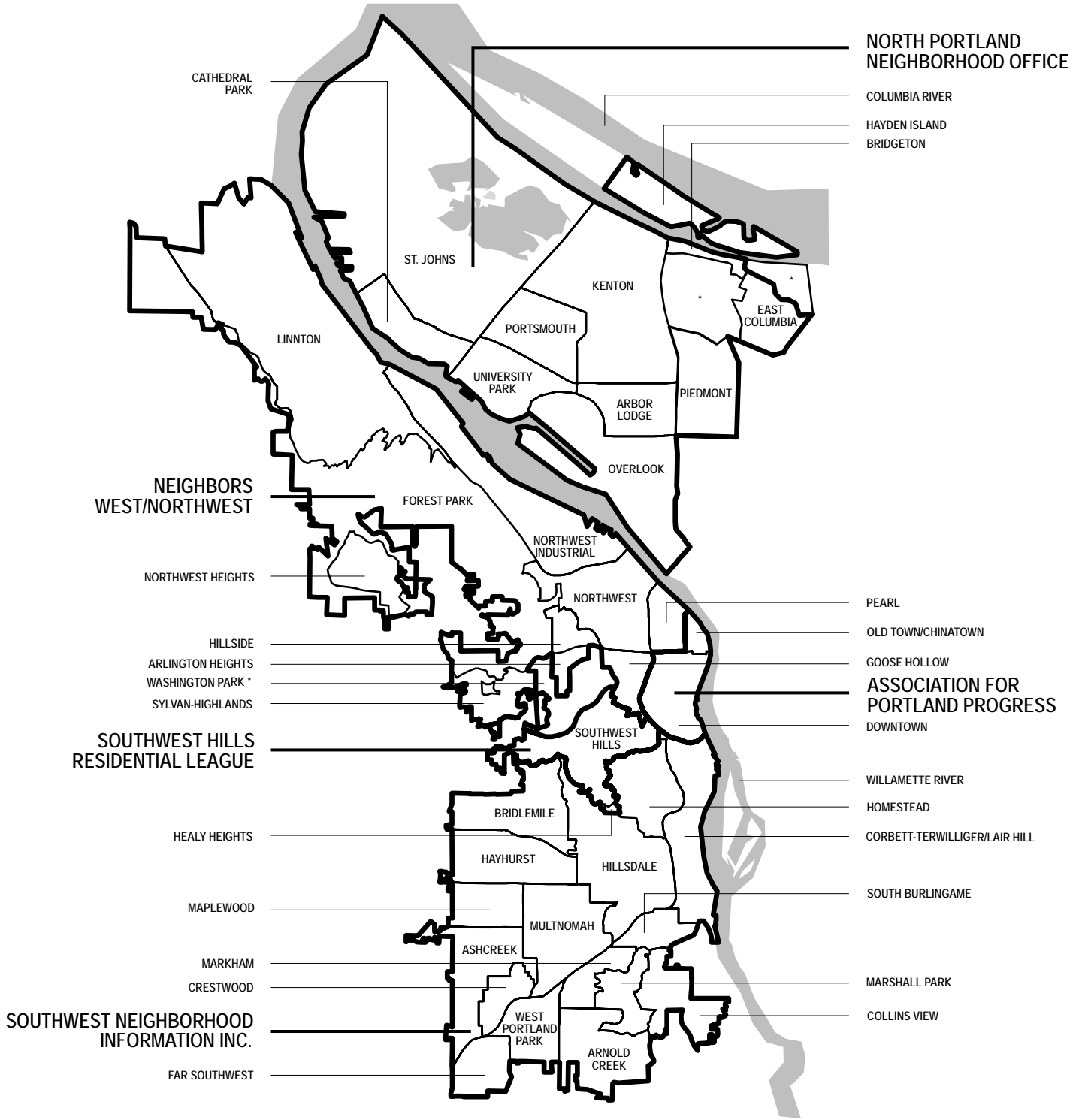
9

	1999	2000	2001	2002	2003
<b>Dispatched Calls <sup>1</sup></b>	<b>228,278</b>	<b>230,740</b>	<b>243,861</b>	<b>248,865</b>	<b>262,670</b>
Rate of Dispatched Calls Per 1,000 Citizens	446	436	455	462	482
Self Initiated Calls	175,459	202,811	176,363	185,261	192,184
Officers Per 1,000 Citizens	2.04	1.96	1.96	1.95	1.82
Citizens Residing in Bureau's Service Area <sup>2</sup>	512,395	529,121	536,240	538,180	545,140
Telephone Report Unit Calls for Service <sup>3</sup>	51,981	48,433	44,840	38,973	30,110
Information and Referral Calls	137,187	132,149	140,640	155,531	134,236

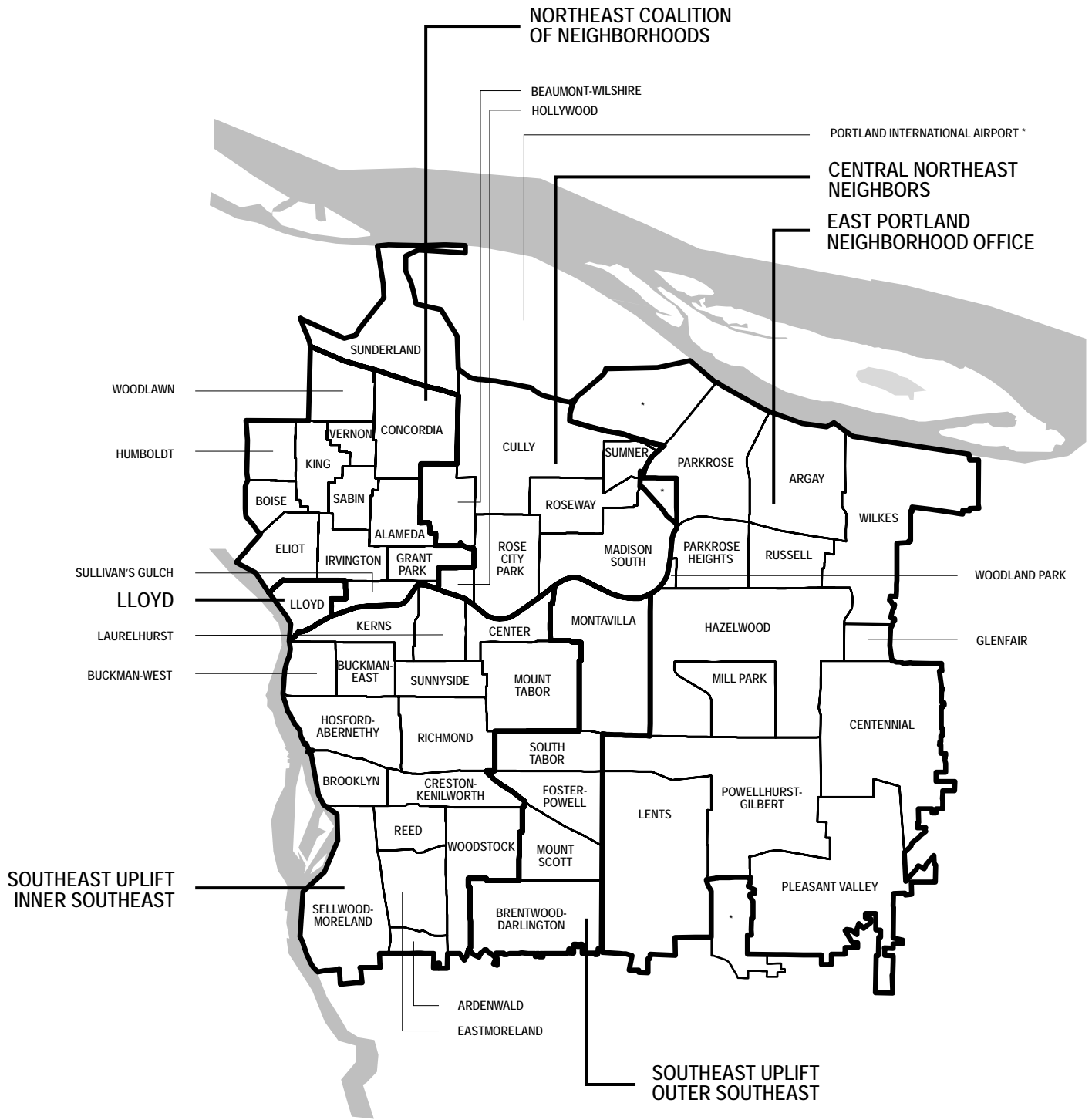
## Part I Crimes <sup>4</sup>

	1999	2000	2001	2002	2003	Percent Change 2002-2003
<b>Crimes Against Persons</b>						
Murder <sup>5</sup>	36	18	22	20	28	40%
Rape	340	369	305	354	310	-12%
Robbery	1,428	1,455	1,272	1,296	1,375	6%
Aggravated Assault	4,501	3,864	2,963	2,844	2,732	-4%
<b>Total Person Crimes</b>	<b>6,305</b>	<b>5,706</b>	<b>4,562</b>	<b>4,514</b>	<b>4,445</b>	<b>-2%</b>
Rate of Person Crimes per 1,000 population	12	11	9	8	8	
<b>Crimes Against Property</b>						
Burglary	6,150	5,601	5,615	5,731	6,507	14%
Larceny	24,409	25,063	28,457	28,052	29,748	6%
Motor Vehicle Theft	4,739	4,782	4,765	5,255	5,982	14%
Arson	468	510	385	496	384	-23%
<b>Total Property Crimes</b>	<b>35,766</b>	<b>35,956</b>	<b>39,222</b>	<b>39,534</b>	<b>42,621</b>	<b>8%</b>
Rate of Property Crimes per 1,000 population	70	68	73	73	78	
<b>Total Part I-Crimes <sup>6</sup></b>	<b>42,071</b>	<b>41,662</b>	<b>43,784</b>	<b>44,048</b>	<b>47,066</b>	<b>7%</b>
Rate of total Part I-Crimes per 1,000 population	82	79	82	82	86	
Citizens Residing in Bureau's Service Area <sup>2</sup>	512,395	529,121	536,240	538,180	545,140	

Footnotes: See page 21, Calls for Service/Part I Crimes



\* Not an official Neighborhood Association



\* Not an official Neighborhood Association

## Reported Offenses per Neighborhood

12

	Murder	Rape	Robbery	Aggravated Assault	Burglary	Larceny	Motor Vehicle Theft	Arson	Total Part I	Total Part II	Total Part III	Grand Total	Rate\1,000 Population
<b>North</b>													
Arbor Lodge	1	0	11	17	64	435	62	4	594	481	840	1,915	313.8
Bridgeton	0	0	0	1	8	33	9	0	51	26	54	131	704.3
Cathedral Park	0	0	7	18	55	147	26	0	253	292	522	1,067	310.1
Columbia (East)	0	0	0	0	3	12	4	0	19	23	43	85	179.3
Hayden Island	1	0	16	14	34	464	78	3	610	274	409	1,293	677.7
Kenton	0	3	16	35	67	246	71	5	443	638	1,425	2,506	384.1
Overlook	0	3	25	32	74	311	77	5	527	519	1,050	2,096	327.2
Piedmont	0	2	15	54	77	263	58	6	475	435	846	1,756	262.0
Portsmouth	2	7	16	43	100	249	71	8	496	539	1,096	2,131	269.3
St Johns	0	9	29	109	146	552	121	8	974	1,015	1,938	3,927	400.6
University Park	0	1	6	17	29	200	29	0	282	171	322	775	156.1
<b>Total North</b>	<b>4</b>	<b>25</b>	<b>141</b>	<b>340</b>	<b>657</b>	<b>2,912</b>	<b>606</b>	<b>39</b>	<b>4,724</b>	<b>4,413</b>	<b>8,545</b>	<b>17,682</b>	<b>324.9</b>
<b>Inner Northeast</b>													
Alameda	0	0	0	2	36	106	25	0	169	88	159	416	74.4
Boise	2	2	15	65	102	194	43	3	426	366	742	1,534	464.1
Concordia	0	2	21	58	144	317	60	6	608	474	890	1,972	186.6
Eliot	1	4	22	54	49	348	76	2	556	531	1,047	2,134	754.3
Grant Park	0	1	5	5	49	144	20	8	232	196	241	669	169.8
Humboldt	0	7	23	70	63	249	66	3	481	549	1,128	2,158	424.2
Irrington	0	2	18	13	70	322	64	2	491	263	437	1,191	179.7
King	2	9	39	78	101	395	49	5	678	991	1,967	3,636	658.1
Lloyd	1	1	69	31	30	1,269	107	2	1,510	901	1,443	3,854	6,370.2
Sabin	0	1	2	8	49	167	20	1	248	176	267	691	155.8
Sullivans Gulch	0	3	34	15	54	480	62	2	650	582	691	1,923	733.1
Vernon	1	3	5	32	56	115	20	0	232	299	552	1,083	369.0
Woodlawn	0	3	4	53	68	176	42	8	354	365	792	1,511	285.5
<b>Total Inner NE</b>	<b>7</b>	<b>38</b>	<b>257</b>	<b>484</b>	<b>871</b>	<b>4,282</b>	<b>654</b>	<b>42</b>	<b>6,635</b>	<b>5,781</b>	<b>10,356</b>	<b>22,772</b>	<b>383.6</b>
<b>Central Northeast</b>													
Beaumont-Wilshire	0	0	8	11	69	114	23	1	226	173	277	676	114.2
Cully	3	10	33	100	144	448	130	8	876	991	2,051	3,918	335.4
Hollywood	1	1	14	5	31	202	27	2	283	309	532	1,124	955.0
Madison South	2	6	13	40	80	303	119	14	577	617	1,188	2,382	327.1
Rose City Park	0	5	14	10	88	370	60	1	548	308	597	1,453	157.6
Roseway	0	1	9	15	83	279	60	3	450	365	657	1,472	235.5
Sumner	0	0	8	10	28	88	33	0	167	176	386	729	402.1
Sunderland	0	1	1	7	9	67	17	0	102	81	175	358	2,118.3
<b>Total Central NE</b>	<b>6</b>	<b>24</b>	<b>100</b>	<b>198</b>	<b>532</b>	<b>1,871</b>	<b>469</b>	<b>29</b>	<b>3,229</b>	<b>3,020</b>	<b>5,863</b>	<b>12,112</b>	<b>278.3</b>
<b>East Portland</b>													
Argay	3	5	18	26	81	302	111	4	550	301	654	1,505	254.9
Centennial	1	9	44	104	253	1,286	282	10	1,989	1,366	2,407	5,762	280.8
Glenfair	0	1	6	21	40	99	38	0	205	184	352	741	307.0
Hazelwood	0	7	69	97	273	2,027	393	14	2,880	1,848	3,399	8,127	453.6
Lents	1	12	42	119	276	1,023	349	23	1,845	1,463	3,341	6,649	390.5

**Reported Offenses per Neighborhood, cont.**

	<b>Murder</b>	<b>Rape</b>	<b>Robbery</b>	<b>Aggravated Assault</b>	<b>Burglary</b>	<b>Larceny</b>	<b>Motor Vehicle Theft</b>	<b>Arson</b>	<b>Total Part I</b>	<b>Total Part II</b>	<b>Total Part III</b>	<b>Grand Total</b>	<b>Rate\1,000 Population</b>
Mill Park	0	2	22	42	85	291	80	2	524	461	1,142	2,127	352.2
Parkrose	0	3	16	40	104	391	130	4	688	513	1,148	2,349	428.3
Parkrose Heights	0	0	7	17	54	204	60	0	342	302	689	1,333	242.3
Pleasant Valley	0	4	1	8	75	147	41	4	280	175	410	865	201.1
Powellhurst-Gilbert	0	11	27	122	224	801	274	13	1,472	1,335	3,237	6,044	382.0
Russell	0	1	5	10	22	225	29	5	297	196	360	853	231.1
Wilkes	1	3	9	21	81	208	48	1	372	253	550	1,175	179.8
Woodland Park	0	1	0	1	1	6	3	0	12	15	44	71	388.0
<b>Total E Portland</b>	<b>6</b>	<b>59</b>	<b>266</b>	<b>628</b>	<b>1,569</b>	<b>7,010</b>	<b>1,838</b>	<b>80</b>	<b>11,456</b>	<b>8,412</b>	<b>17,733</b>	<b>37,601</b>	<b>337.7</b>
<b>Inner Southeast</b>													
Ardenwald	0	0	1	2	5	20	2	0	30	22	36	88	132.3
Brooklyn	0	3	6	11	42	135	41	6	244	245	497	986	268.0
Buckman-East	0	4	12	25	85	289	86	5	506	376	746	1,628	239.1
Buckman-West	0	1	13	44	48	262	47	8	423	634	1,098	2,155	1,925.8
Center	0	2	10	16	47	393	43	2	513	366	655	1,534	341.3
Creston-Kenilworth	0	7	22	36	110	321	97	4	597	475	1,007	2,079	265.1
Eastmoreland	0	0	0	1	23	151	20	1	196	93	131	420	82.7
Hosford-Abernethy	0	1	11	23	103	381	85	4	608	374	880	1,862	263.3
Kerns	0	2	16	30	50	320	101	9	528	502	947	1,977	410.9
Laurelhurst	0	0	1	3	29	99	27	4	163	108	366	637	133.1
Mt Tabor	0	1	2	14	91	337	67	5	517	264	616	1,397	139.8
Reed	0	2	1	7	56	144	41	2	253	107	221	581	187.2
Richmond	0	3	14	15	134	377	99	4	646	449	887	1,982	168.9
Sellwood-Moreland	0	3	8	26	111	390	91	0	629	428	822	1,879	171.3
Sunnyside	0	4	19	13	80	437	59	8	620	503	738	1,861	257.6
Woodstock	0	3	13	21	99	290	46	2	474	307	605	1,386	161.4
<b>Total Inner SE</b>	<b>0</b>	<b>36</b>	<b>149</b>	<b>287</b>	<b>1,113</b>	<b>4,346</b>	<b>952</b>	<b>64</b>	<b>6,947</b>	<b>5,253</b>	<b>10,252</b>	<b>22,452</b>	<b>229.2</b>
<b>Outer Southeast</b>													
Brentwood-Darlington	0	6	12	61	120	298	79	6	582	686	1,466	2,734	261.0
Foster-Powell	0	3	18	28	126	456	125	11	767	565	1,090	2,422	335.6
Montavilla	0	12	33	83	220	799	241	16	1,404	1,067	2,508	4,979	325.2
Mt Scott	0	3	14	44	77	301	92	5	536	527	1,168	2,231	308.4
South Tabor	0	0	13	18	84	289	66	6	476	321	711	1,508	239.4
<b>Total Outer SE</b>	<b>0</b>	<b>24</b>	<b>90</b>	<b>234</b>	<b>627</b>	<b>2,143</b>	<b>603</b>	<b>44</b>	<b>3,765</b>	<b>3,166</b>	<b>6,943</b>	<b>13,874</b>	<b>298.1</b>
<b>Southwest</b>													
Arnold Creek	0	0	0	1	5	25	2	0	33	24	60	117	38.3
Ashcreek	0	0	1	12	25	72	17	2	129	135	227	491	96.9
Bridlemile	0	0	3	6	13	67	2	0	91	62	170	323	56.8
Collins View	0	0	1	2	22	134	1	4	164	147	117	428	208.3
Corbett-Terw/Lair	0	2	5	14	92	265	43	2	423	238	476	1,137	252.6
Crestwood	0	0	1	2	15	18	0	0	36	17	54	107	88.9
Far Southwest	0	0	2	2	4	104	11	0	123	36	78	237	156.4
Hayhurst	0	0	2	1	22	65	6	1	97	81	150	328	62.7

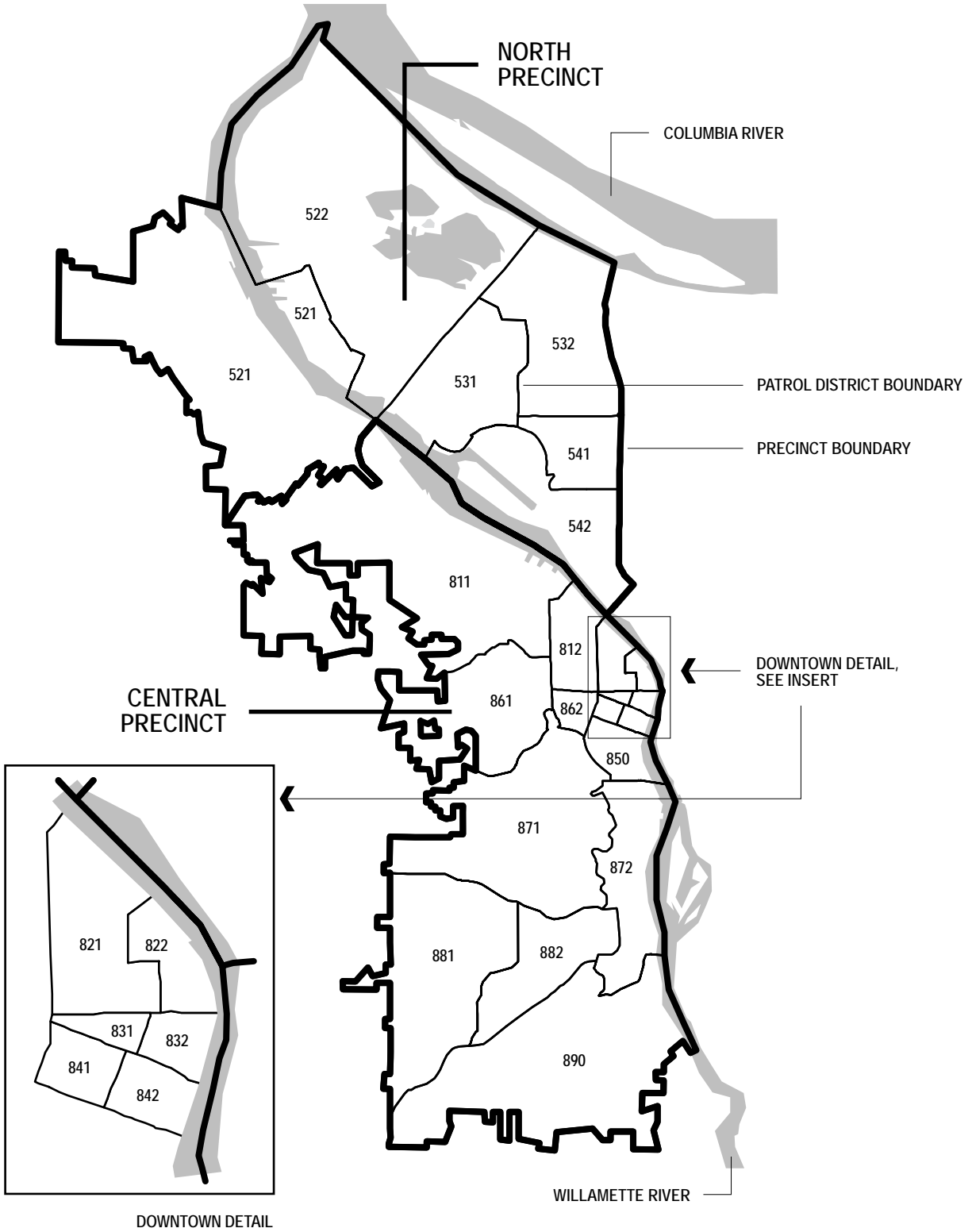
## Reported Offenses per Neighborhood, cont.

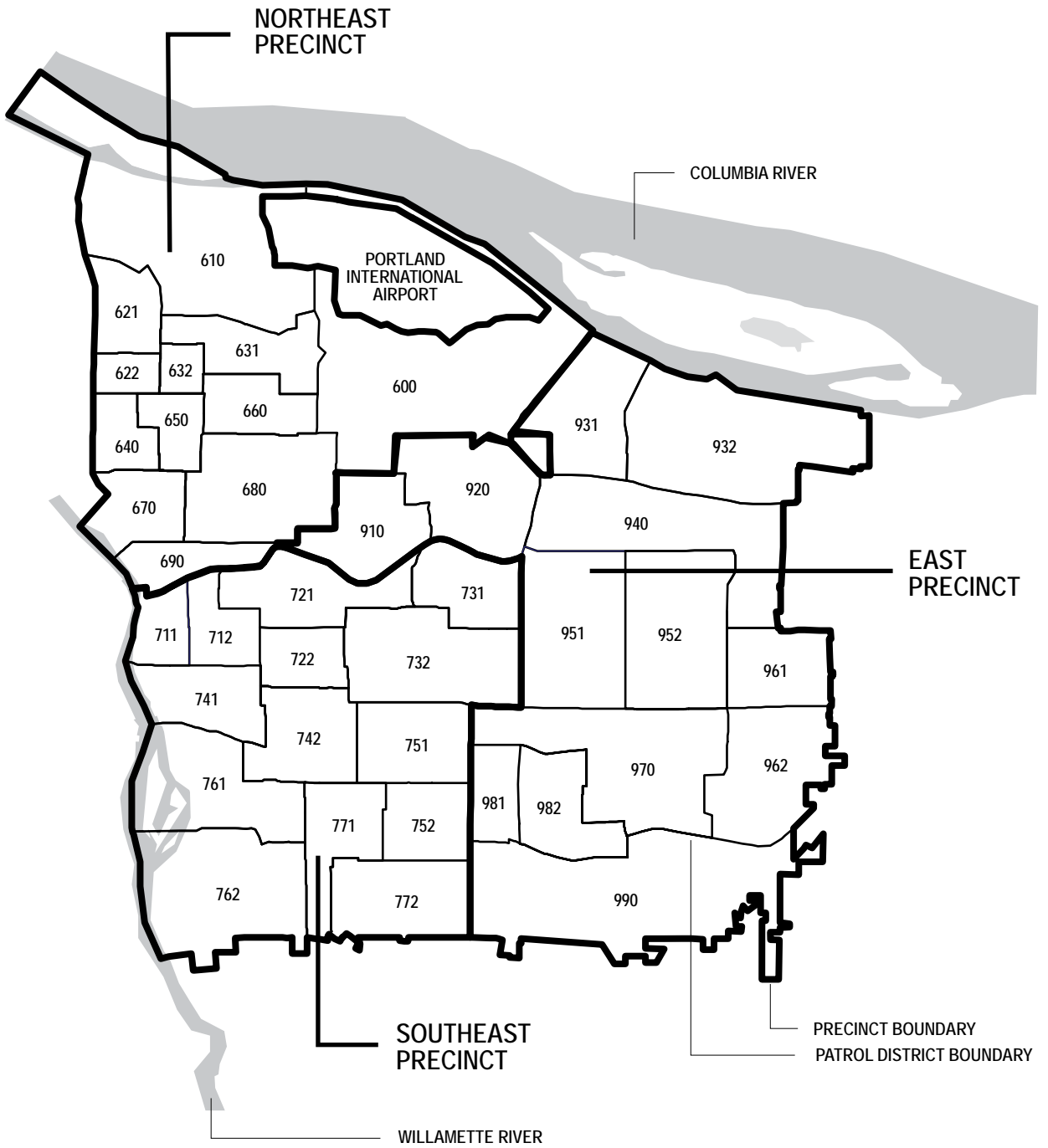
14

	Murder	Rape	Robbery	Aggravated Assault	Burglary	Larceny	Motor Vehicle Theft	Arson	Total Part I	Total Part II	Total Part III	Grand Total	Rate\1,000 Population
Healy Heights	0	0	0	0	2	3	0	0	5	5	1	11	52.6
Hillsdale	0	0	16	10	46	180	15	15	282	228	441	951	114.3
Homestead	0	0	2	5	15	220	22	0	264	71	267	602	193.3
Maplewood	0	0	0	1	11	29	1	1	43	40	74	157	62.1
Markham	0	0	0	3	8	29	4	1	45	26	74	145	60.8
Marshall Park	0	0	0	2	1	4	1	0	8	18	36	62	43.3
Multnomah	0	0	6	17	50	158	34	4	269	302	620	1,191	170.8
South Burlingame	0	0	0	1	5	24	6	0	36	30	81	147	86.9
Southwest Hills	0	0	1	0	36	99	13	0	149	75	132	356	67.3
W Portland Park	0	1	2	11	25	72	13	1	125	107	209	441	127.3
<b>Total Southwest</b>	<b>0</b>	<b>3</b>	<b>42</b>	<b>90</b>	<b>397</b>	<b>1,568</b>	<b>191</b>	<b>31</b>	<b>2,322</b>	<b>1,642</b>	<b>3,267</b>	<b>7,231</b>	<b>113.5</b>
<b>Northwest</b>													
Arlington Heights	0	0	0	0	10	4	2	0	16	13	13	42	48.8
Forest Park	0	0	1	0	38	78	8	0	125	47	97	269	150.2
Goose Hollow	0	3	13	22	71	364	49	6	528	483	958	1,969	362.4
Hillside	0	1	0	1	9	28	3	1	43	11	25	79	63.4
Linnton	0	0	0	3	9	53	4	1	70	45	108	223	235.0
Northwest	0	3	34	38	127	969	174	8	1,353	1,213	1,680	4,246	348.1
NW Heights	0	0	0	1	12	21	2	0	36	16	33	85	89.2
NW Industrial	0	0	0	1	18	31	16	0	66	50	136	252	4,581.8
Pearl	0	4	18	21	52	468	54	1	618	638	1,051	2,307	2,957.7
Sylvan-Highlands	0	1	0	3	13	40	4	0	61	55	89	205	170.5
<b>Total Northwest</b>	<b>0</b>	<b>12</b>	<b>66</b>	<b>90</b>	<b>359</b>	<b>2,056</b>	<b>316</b>	<b>17</b>	<b>2,916</b>	<b>2,571</b>	<b>4,190</b>	<b>9,677</b>	<b>380.0</b>
<b>Downtown</b>													
Downtown	1	22	172	187	225	2,498	209	12	3,326	4,831	8,471	16,628	1,809.2
Old Town/ Chinatown	3	3	47	60	31	262	32	6	444	2,772	3,375	6,591	4,622.0
<b>Total Downtown</b>	<b>4</b>	<b>25</b>	<b>219</b>	<b>247</b>	<b>256</b>	<b>2,760</b>	<b>241</b>	<b>18</b>	<b>3,770</b>	<b>7,603</b>	<b>11,846</b>	<b>23,219</b>	<b>2,187.0</b>
Unknown/ No Neighborhood	1	63	24	101	100	788	144	10	1,231	1,468	6,523	9,222	

Note: Rates are based on residential population data. Many factors can influence the Rate/1000 Population calculations and can affect meaningful comparisons among neighborhoods. For example, the large work force in the Lloyd, Downtown, Old Town/Chinatown, Pearl and Northwest Industrial neighborhoods can distort the crime rate for those areas.







## Reported Offenses per Patrol District

17

	Murder	Rape	Robbery	Aggravated Assault	Burglary	Larceny	Motor Vehicle Theft	Arson	Total Part I	Total Part II	Total Part III	Grand Total
<b>North Precinct</b>												
521	0	0	7	16	60	174	18	1	276	302	559	1,137
522	0	9	29	111	154	587	131	8	1,029	1,053	2,031	4,113
531	2	8	22	60	130	449	100	8	779	710	1,419	2,908
532	0	3	16	35	66	246	71	5	442	638	1,424	2,504
541	1	0	13	24	77	513	82	7	717	599	1,100	2,416
542	0	3	23	25	61	233	57	2	404	401	790	1,595
<b>North Totals</b>	<b>3</b>	<b>23</b>	<b>110</b>	<b>271</b>	<b>548</b>	<b>2,202</b>	<b>459</b>	<b>31</b>	<b>3,647</b>	<b>3,703</b>	<b>7,323</b>	<b>14,673</b>
<b>Northeast Precinct</b>												
600	3	10	44	115	197	700	204	9	1,282	1,275	2,645	5,202
610	1	3	24	38	76	713	143	5	1,003	556	1,022	2,581
621	0	2	13	48	75	219	49	5	411	366	691	1,468
622	0	2	20	33	33	167	39	2	296	341	647	1,284
631	0	5	11	76	90	247	49	11	489	429	869	1,787
632	0	5	13	36	43	216	34	1	348	336	747	1,431
640	2	9	28	108	146	347	83	5	728	863	1,722	3,313
650	2	4	21	71	105	319	42	4	568	741	1,503	2,812
660	1	1	18	41	155	298	51	1	566	536	892	1,994
670	1	4	30	66	74	417	95	4	691	683	1,255	2,629
680	0	4	22	23	215	674	119	11	1,068	593	962	2,623
690	1	4	101	48	84	1,744	172	7	2,161	1,543	2,499	6,203
<b>NE Totals</b>	<b>11</b>	<b>53</b>	<b>345</b>	<b>703</b>	<b>1,293</b>	<b>6,061</b>	<b>1,080</b>	<b>65</b>	<b>9,611</b>	<b>8,262</b>	<b>15,454</b>	<b>33,327</b>
<b>Southeast Precinct</b>												
711	0	1	17	50	51	303	60	10	492	808	1,394	2,694
712	0	6	19	32	105	448	128	6	744	542	1,059	2,345
721	0	4	17	38	106	649	122	11	947	662	1,407	3,016
722	0	2	23	14	118	484	70	10	721	574	813	2,108
731	0	4	22	47	147	518	128	12	878	552	1,404	2,834
732	0	9	14	50	171	637	183	10	1,074	805	1,775	3,654
741	0	1	12	23	110	416	93	4	659	416	935	2,010
742	0	8	26	44	165	532	159	5	939	705	1,554	3,198
751	0	5	28	44	197	532	147	15	968	709	1,546	3,223
752	0	3	20	50	114	542	145	8	882	759	1,531	3,172
761	0	6	9	20	119	402	101	8	665	435	921	2,021
762	0	2	7	27	118	439	94	1	688	460	789	1,937
771	0	3	13	21	100	293	47	2	479	308	607	1,394
772	0	6	13	61	119	302	78	6	585	689	1,470	2,744
<b>SE Totals</b>	<b>0</b>	<b>60</b>	<b>240</b>	<b>521</b>	<b>1,740</b>	<b>6,497</b>	<b>1,555</b>	<b>108</b>	<b>10,721</b>	<b>8,424</b>	<b>17,205</b>	<b>36,350</b>
<b>Central Precinct</b>												
811	0	1	3	10	95	215	49	1	374	348	401	1,123
812	0	2	29	31	74	759	142	6	1,043	939	1,444	3,426
821	1	4	41	36	57	498	49	2	688	1,809	2,525	5,022
822	2	3	25	37	18	171	23	5	284	1,335	1,584	3,203
831	1	1	29	34	22	181	16	1	285	763	1,051	2,099

## Reported Offenses per Patrol District, cont.

18

	Murder	Rape	Robbery	Aggravated Assault	Burglary	Larceny	Motor Vehicle Theft	Arson	Total Part I	Total Part II	Total Part III	Grand Total
<b>Central Precinct, cont.</b>												
832	0	4	40	50	34	235	39	2	404	1,991	3,193	5,588
841	0	4	31	28	52	500	33	2	650	720	1,434	2,804
842	0	2	56	41	34	626	48	0	807	754	1,077	2,638
850	0	12	18	43	88	984	79	7	1,231	880	2,208	4,319
861	0	2	4	9	73	276	33	3	400	187	323	910
862	0	2	11	21	48	294	41	6	423	447	883	1,753
871	0	0	15	13	98	462	41	3	632	285	656	1,573
872	0	2	5	25	97	314	49	1	493	412	1,507	2,412
881	0	0	7	18	85	240	34	6	390	351	643	1,384
882	0	0	11	24	66	232	37	15	385	387	824	1,596
890	0	2	5	22	69	394	37	6	535	392	657	1,584
<b>Central Totals</b>	<b>4</b>	<b>41</b>	<b>330</b>	<b>442</b>	<b>1,010</b>	<b>6,381</b>	<b>750</b>	<b>66</b>	<b>9,024</b>	<b>12,000</b>	<b>20,410</b>	<b>41,434</b>
<b>East Precinct</b>												
910	1	7	29	20	133	643	132	5	970	678	1,261	2,909
920	2	6	21	51	148	500	130	15	873	906	1,704	3,483
931	0	3	16	40	104	391	130	4	688	513	1,148	2,349
932	3	8	24	41	126	403	138	5	748	449	956	2,153
940	1	3	24	64	159	666	161	5	1,083	854	1,783	3,720
951	0	5	67	82	184	1,804	287	6	2,435	1,547	2,849	6,831
952	0	5	30	65	199	585	207	10	1,101	860	1,857	3,818
961	1	4	15	49	94	338	119	8	628	433	1,019	2,080
962	0	4	9	37	114	452	130	2	748	526	959	2,233
970	1	11	41	133	248	1,249	289	13	1,985	1,664	3,541	7,190
981	0	2	25	40	109	554	156	14	900	656	1,373	2,929
982	1	3	4	24	65	184	83	5	369	316	835	1,520
990	0	11	15	69	184	448	157	9	893	756	2,118	3,767
<b>East Totals</b>	<b>10</b>	<b>72</b>	<b>320</b>	<b>715</b>	<b>1,867</b>	<b>8,217</b>	<b>2,119</b>	<b>101</b>	<b>13,421</b>	<b>10,158</b>	<b>21,403</b>	<b>44,982</b>
Unknown/ Not In City	0	60	9	47	23	378	51	3	571	782	3,723	5,076

## Adult and Juvenile Arrests

	1999	2000	2001	2002	2003
<b>Juvenile</b>					
Part I	1,788	1,519	1,312	1,269	1,475
Part II	3,896	3,975	2,898	2,177	2,265
Part III	1,100	995	942	795	799
<b>Total Juvenile</b>	<b>6,784</b>	<b>6,489</b>	<b>5,152</b>	<b>4,241</b>	<b>4,539</b>
<b>Adult</b>					
Part I	6,200	6,362	6,204	7,181	7,448
Part II	20,546	21,403	18,324	16,769	16,881
Part III	7,596	7,168	6,815	7,200	7,341
<b>Total Adult</b>	<b>34,342</b>	<b>34,933</b>	<b>31,343</b>	<b>31,150</b>	<b>31,670</b>

Source: Portland Police Data System (PPDS); Juvenile: age 17 and younger. For Definitions: See Appendix A

## Arrests

19

	Adults Arrested	Juveniles Arrested	Total Arrests in 2003
<b>Part I Crime Arrests</b>			
Willful Criminal Homicide	51	9	60
Rape	50	4	54
Robbery	379	75	454
Aggravated Assaults	372	83	455
Burglary	493	161	654
Larceny	5,242	966	6,208
Motor Vehicle Theft	822	154	976
Arson	39	23	62
<b>Total Part I Arrests</b>	<b>7,448</b>	<b>1,475</b>	<b>8,923</b>
<b>Part II Crime Arrests</b>			
Simple Assaults	3,619	323	3,942
Forgery	643	16	659
Fraud	394	13	407
Stolen Property	39	12	51
Vandalism	517	198	715
Weapon Laws	424	66	490
Prostitution	410	12	422
Sex Crimes	111	12	123
<b>Drug Laws</b>			
Opium	1	0	1
Heroin	665	17	682
Morphine	5	0	5
Cocaine	1,552	49	1,601
Codeine	23	0	23
Hashish	3	0	3
Marijuana	771	99	870
Synthetic Drugs	27	2	29
Dangerous Drugs	1,001	11	1,012
Other Drug Laws	52	11	63
<b>Drug Laws Total</b>	<b>4,100</b>	<b>189</b>	<b>4,289</b>
Gambling	3	2	5
Family Offenses	26	0	26
Driving Under the Influence of Intoxicants	1,814	15	1,829
Liquor Laws	2,003	241	2,244
Disorderly Conduct	1,377	119	1,496
Kidnapping	4	1	5
Curfew	6	382	388
Runaway	8	547	555
All Others	1,383	117	1,500
<b>Total Part II Arrests</b>	<b>16,881</b>	<b>2,265</b>	<b>19,146</b>
<b>Part III Crime Arrests</b>			
Miscellaneous Traffic	2,109	46	2,155
Protective Custody	0	458	458
Other Custody	5	0	5
Warrants	34	3	37
Fugitives	5,193	292	5,485
<b>Total Part III Arrests</b>	<b>7,341</b>	<b>799</b>	<b>8,140</b>
<b>Grand Total</b>	<b>31,670</b>	<b>4,539</b>	<b>36,209</b>

Footnotes: See page 21, Arrests

**Aggravated Assault:** An attack by one person upon another for the purpose of inflicting severe injury. This type of assault usually is accompanied by the use of a weapon or by means likely to produce death or injury.

**All Other Offenses:** Except Traffic - Includes trespass, blackmail, bomb threat, animal ordinances, and littering.

**Arrest:** The actual number of persons arrested (both booked and taken into custody; and cited and released) for committing criminal acts.

**Arson:** Any willful burning or attempt to burn a building, motor vehicle, aircraft, or personal property of another.

**Burglary:** The unlawful entry of a structure (both residential and non-residential) with intent to commit a theft.

**Crimes Against Persons:** Criminal offenses where the victim is present and the act is violent, threatening or has the potential of being physically harmful.

**Crimes Against Property:** Offenses that involve taking something of value by theft or deception or the destruction of property.

**Disorderly Conduct:** In this classification are placed all offenses of committing a breach of the peace.

**Drug Laws:** Included are all violations of state and local laws, specifically those related to the unlawful possession, sale, use, growing, manufacturing, and making of illegal drugs.

**Driving Under the Influence of Intoxicants (D.U.I.I.):** Driving or operating any vehicle while under the influence of liquor or drugs.

**Embezzlement:** Misappropriation of money or property entrusted to one's care.

**Extortion:** The use of fear of death, injury, property loss, reputation, etc. to induce or compel another to deliver property or perform some act or omission.

**Family Offenses:** Included here are offenses such as abandonment, neglect of children, custodial interference and non-support. (Physical abuse would be reported as an assault).

**Forgery also Forgery/Counterfeiting:** Forgery and counterfeiting are treated as allied offenses. In this classification are placed all offenses dealing with the making, altering, or possessing, with intent to defraud, anything false in the semblance of that which is true.

**Fraud:** Fraudulent conversion and obtaining money or property by false pretenses.

**Fugitives:** This category covers arrests made for other agencies and may be for: Parole/Probation violation, AWOL (absence without leave) from a penal institution, etc.

**Gambling:** All offenses which relate to promoting, permitting, or engaging in gambling are included in this category.

**Homicide:** Includes willful murder and aggravated murder.

**Kidnapping:** The interference with another person's liberty without consent or legal authority.

**Larceny:** The unlawful taking of property from the possession of another; includes pickpocket, pursesnatch, shoplift, bike theft, and theft from motor vehicle (car prowler).

**Liquor Laws:** With the exception of Driving Under the Influence all liquor law violations, state or local, are placed in this classification.

**Miscellaneous Traffic Crimes:** Serious traffic offenses which are classified as a misdemeanor or felony as defined by the Oregon Motor Vehicle Code.

**Motor Vehicle Theft:** The theft or attempted theft of a motor vehicle; includes motorcycles.

**Murder:** The willful (non-negligent) killing of one human being by another.

**Negligent Homicide:** The killing of another person through gross negligence.

Offenses - Excludes motor vehicle traffic death.

Arrests - Includes persons arrested for motor vehicle traffic death.

**Offense:** The criminal act, the number of criminal acts.

**Part I Crimes:** A group of crimes which are reported and tracked nationally: murder, rape, robbery, aggravated assault, burglary, larceny, motor vehicle theft, and arson.

**Part II Crimes:** A group of crimes which are reported and tracked nationally: simple assault, forgery, fraud, stolen property, vandalism, weapon laws, prostitution, sex crimes, drug laws, gambling, family offenses, D.U.I.I., liquor laws, disorderly conduct, kidnapping, curfew, runaway, and other offenses (see All Other Offenses above).

**Part III Crimes:** A group of crimes which are reported and tracked within the State of Oregon: includes traffic, warrants, protective custody, fugitives, officer assaults, and property and vehicles recovered for other jurisdictions.

**Protective Custody:** The custody of persons for detoxification, mental holds, material witness, or protective custody.

Examples: transport of an intoxicated subject to the local detoxification center; taking a child into protective custody pending further investigation of the child's care and welfare.

**Prostitution:** Included in this classification are the sex offenses of a commercialized nature.

**Pursesnatch:** To snatch a purse from the physical control of another. (If force is directed or used against the victim the matter becomes a robbery).

**Rape:** The carnal knowledge of a female, forcibly and against her will.

**Robbery:** The taking or attempting to take anything of value from a person or persons by force or threat of force.

**Runaway:** When a juvenile has departed from some location within Multnomah County and the juvenile's parents or guardians have reported them as a runaway.

**Sex Crimes:** Covers offenses such as statutory rape, contributing to the sexual delinquency of a minor, non-forcible rape, incest, molest, indecent exposure, forcible and non-forcible sodomy, obscene phone calls. (Does not include forcible rape, or prostitution).

**Simple Assault:** Assaults which are limited to the use of physical force and result in little or no injury to the victim.

**Stolen Property Offenses:** Included in this classification are all offenses of buying, receiving and possessing stolen property, as well as all attempts to commit any of these offenses.

**Vandalism:** Consists of the willful destruction, or defacement of property.

**Warrants:** Includes service of warrants of arrest and related papers for Multnomah County, as well as all other jurisdictions within the United States.

**Weapons Regulation Laws:** Deals with weapon offenses which are regulatory in nature, such as: furnishing a deadly weapon to a minor; excon or alien in possession of a firearm.

**Willful Murder and Non Negligent Manslaughter:** The willful (non-negligent) killing of one human being by another.

### Appendix A Source:

Oregon Law Enforcement Data System (LEDS); Portland Police Data System. These definitions are not intended to serve as legal definitions.

### Organizational Chart Footnotes, Page 7:

1. Portland Police Bureau 2. Gang Resistance Education and Training 3. Regional Organized Crime and Narcotics 4. Federal Bureau of Investigation 5. Association for Portland Progress 6. Housing Authority of Portland 7. Driving Under the Influence of Intoxicants

### Personnel Distribution, Page 8:

Asst. Chief = Assistant Chief, Cmdr. = Commander, Capt. = Captain, Lt. = Lieutenant, Sgt. = Sergeant, Det. = Detective, Crmlst. = Criminalist

Detectives and Sergeants were previously reported under the same category, but are now separated. Personnel numbers reflect budgeted authority figures, which include vacancies, but do not include overhires.

### Calls for Service and Part I Crimes Footnotes, Page 9:

1. Data on "Dispatched Calls" are from BOEC (Bureau of Emergency Communication) Computer Aided Dispatch (CAD) System incident tapes and include all calls to 9-1-1 and non-emergency calls for which a patrol car was dispatched.
2. Population numbers are for July 1 of the given year and are from Portland State University, Population Research Center.
3. TRU calls are calls for service which are handled by the Telephone Report Unit, either by giving advice, taking a report, or mailing a report form for the complainant to complete and return. Excluded are calls that were initially screened by TRU officers for which a patrol car was subsequently dispatched.
4. Part I Crime data are from Oregon Law Enforcement Data System (LEDS). Included are actual offenses known to the police. Reported offenses which upon investigation are unfounded or baseless are not included. For definitions of crimes see Appendix A.
5. Murder includes willful criminal homicide, but not homicide through negligence.
6. During the year 2000, policy changes were made in the way that burglary, theft from auto, vandalism to vehicle, and stolen auto vehicle reports were handled which could impact the statistics.

### Arrests, Page 19

Source: Portland Police Data System

For definitions: See Appendix A



**Vera Katz, Mayor**  
**Derrick Foxworth, Chief of Police**

**This report was produced by the Planning and Support Division.**

**Portland Police Bureau**  
**1111 S.W. 2nd Avenue**  
**Portland, OR 97204**  
**(503) 823-0283**

<http://www.portlandpolicebureau.com>

Printed on recycled paper