



PORTLAND PARKS & RECREATION™
Healthy Parks, Healthy Portland



Scott
Edwards
Architecture

NPAC

Design Option:

Beacon in the Park

Beacon in the Park

Site Plan



GENERAL LEGEND / LEYENDA GENERAL

--- --	LIMIT OF WORK LÍMITE DE OBRA
—(SS)—	SANITARY SEWAGE LINE LÍNEA DE ALCANTARILLADO
---100---	CONTOUR LINE - 5FT. INTERVAL LÍNEA DE CONTORNO - INTERVALO DE 5 PIES
---99---	CONTOUR LINE - 1FT. INTERVAL LÍNEA DE CONTORNO - INTERVALO DE 1 PIE
---●---	LOOP PATH CAMINO CIRCULAR
●	PROPOSED TREE (51) ÁRBOL PROPUESTO
○	EXISTING TREE TO REMAIN ÁRBOL EXISTENTE A CONSERVAR
○	SPECIAL VALUE TREE ÁRBOL DE VALOR ESPECIAL
⊗	EXISTING TREE TO BE REMOVED ÁRBOL EXISTENTE A RETIRAR
.....	BIKE RACKS / PORTABICICLETAS - 34 (68 SPACES / ESTACIONAMIENTO PARA BICICLETAS) (INCLUDES 20 LONG TERM BIKING SPACES) (INCLUYE 20 PLAZAS PARA BICICLETAS DE LARGA DURACIÓN)
—	EXISTING PATH CAMINO EXISTENTE
—	PROPOSED PATH CAMINO PROPUESTO
TREES TO BE REMOVED / ÁRBOLES A RETIRAR: 21	
- 15% OF TOTAL TREE INVENTORY / - 15% DEL INVENTARIO TOTAL DE ÁRBOLES	
- INCLUDES 20 NUISANCE TREES - INCLUYE 20 ÁRBOLES INVASORES	
- INCLUDES 1 SPECIAL VALUE TREE - INCLUYE 1 ÁRBOL DE VALOR ESPECIAL	
OPEN RECREATION LAWN AREA / ÁREA DE RECREACIÓN ABIERTA: 100,000 SF	

Site Design

- Building nearest to Fessenden
- Parking lot to the east with access from Fessenden
- Smallest site development area
- Service access from Geneva

Outdoor Amenities

- L-shaped Plaza with Pavilion and Splash Pad
- Compact and efficient layout
- Largest Open Lawn accommodates HS soccer field

Beacon in the Park

Perspectives

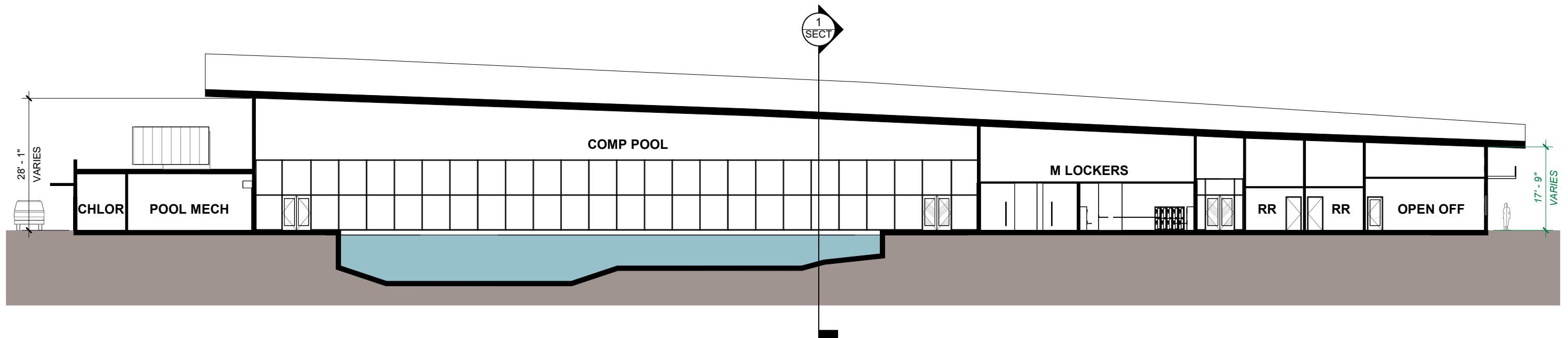
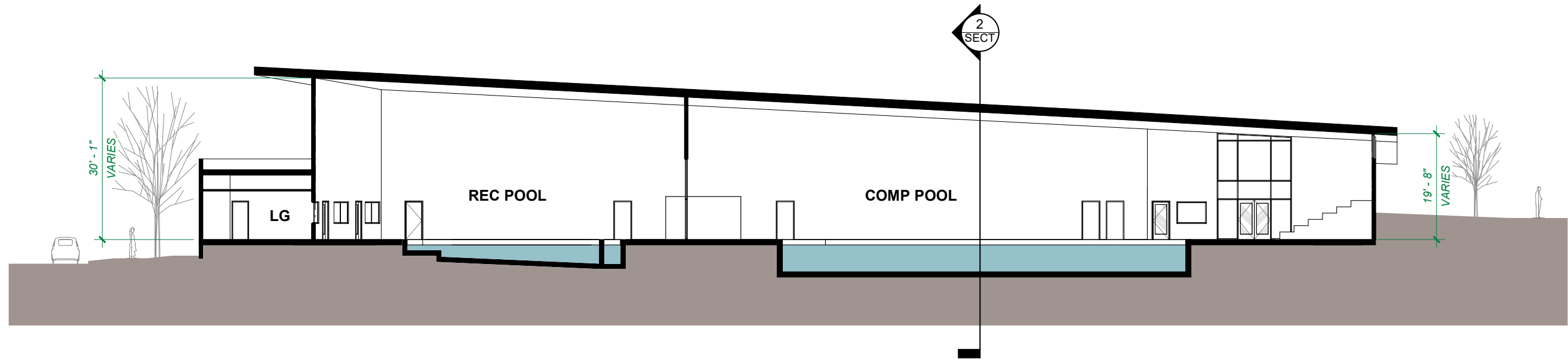


Building Exterior Design

- Highlights the Recreation Pool and waterslide
- Dynamic views to and from the pool
- Main Entry highly visible
- Competition Entry faces the parking lot

Beacon in the Park

Building Sections



Beacon in the Park

Aerial



Sustainability

- **Open Space:** Approx 100,000 SF open lawn
- **Heat Island Reduction:** Least amount of paving but removes the most trees
- **Bike Facilities:** Central access off the Plaza; direct access to Fessenden bus stop and bike lane
- **Rainwater management:** Runoff from parking will be managed onsite via drywells
- **Trees:** 21 trees removed
- **Quality Views:** Views of the park to the south and east