



PORTLAND PARKS & RECREATION™
Healthy Parks, Healthy Portland



Scott
Edwards
Architecture

NPAC

Design Option:

Meet Me at Geneva

Meet Me at Geneva

Site Plan



GENERAL LEGEND / LEYENDA GENERAL

- LIMIT OF WORK / LÍMITE DE OBRA
 - (SS)— SANITARY SEWAGE LINE / LÍNEA DE ALCANTARILLADO
 - 100--- CONTOUR LINE - 5FT. INTERVAL / LÍNEA DE CONTORNO - INTERVALO DE 5 PIES
 - 99--- CONTOUR LINE - 1FT. INTERVAL / LÍNEA DE CONTORNO - INTERVALO DE 1 PIE
 - LOOP PATH / CAMINO CIRCULAR
 - PROPOSED TREE (83) / ÁRBOL PROPUESTO
 - EXISTING TREE TO REMAIN / ÁRBOL EXISTENTE A CONSERVAR
 - SPECIAL VALUE TREE / ÁRBOL DE VALOR ESPECIAL
 - ⊗ EXISTING TREE TO BE REMOVED / ÁRBOL EXISTENTE A RETIRAR
 - BIKE RACKS / PORTABICICLETAS - 34 (68 SPACES / ESTACIONAMIENTO PARA BICICLETAS) (INCLUDES 20 LONG TERM BIKING SPACES) (INCLUYE 20 PLAZAS PARA BICICLETAS DE LARGA DURACIÓN)
 - EXISTING PATH / CAMINO EXISTENTE
 - PROPOSED PATH / CAMINO PROPUESTO
- TREES TO BE REMOVED / ARBOLES A RETIRAR: 11**
 - 7% OF TOTAL TREE INVENTORY / - 7% DEL INVENTARIO TOTAL DE ARBOLES
 - INCLUDES 3 NUISANCE TREES / - INCLUYE 3 ARBOLES INVASORES
- OPEN RECREATION LAWN AREA / ÁREA DE RECREACIÓN ABIERTA: 76,000 SF**

Site Design

- Parking to the south with all access from Geneva
- Minimal number of trees removed
- Open Lawn adjacent to Clarendon
- Linear Plaza connecting all elements
- Small parking lot replaces tennis courts

Outdoor Amenities

- Pavilion near Fessenden
- Splashpad separated from building and Pavilion
- Accommodates a 9V9 U12 soccer field

Meet Me at Geneva

Perspectives

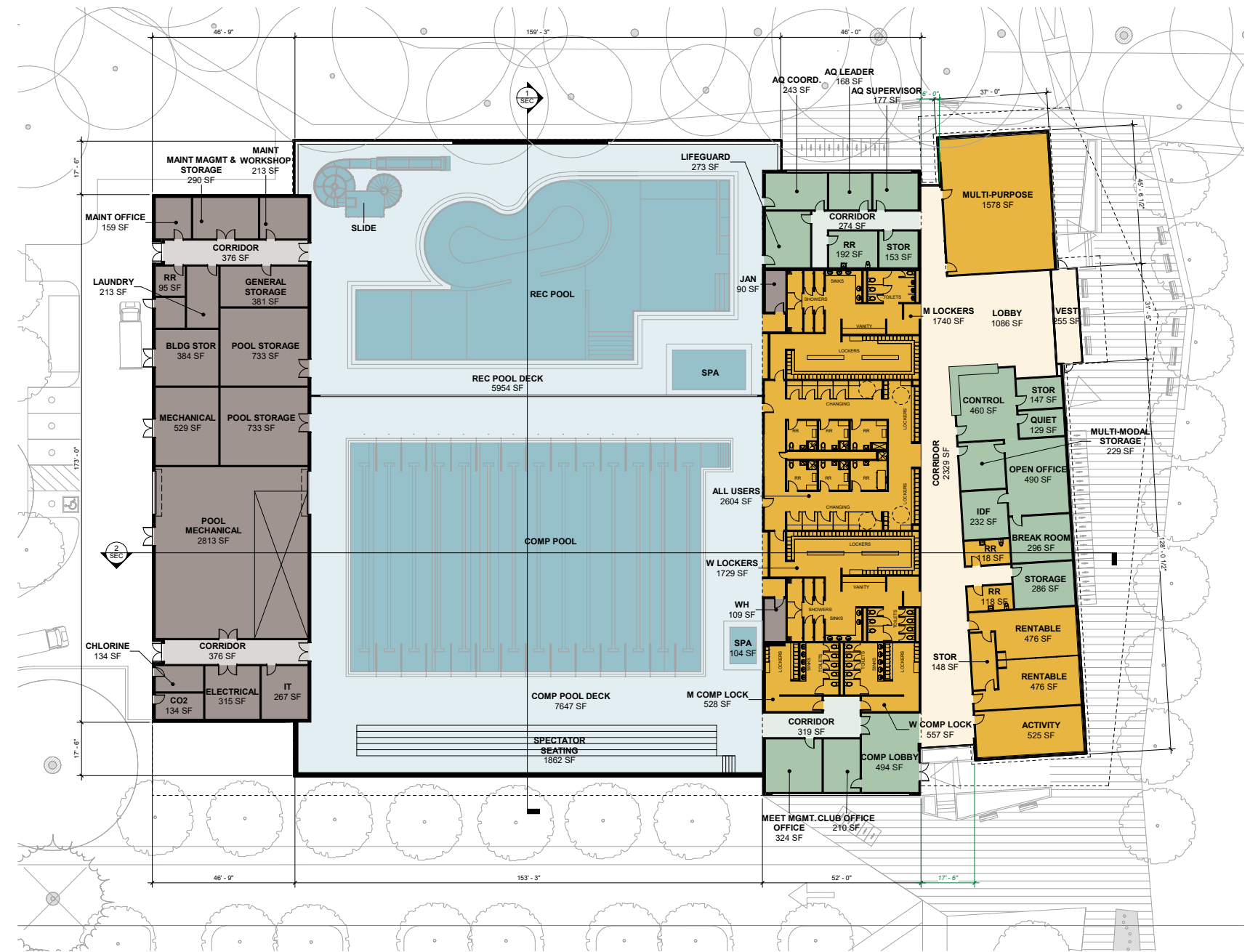
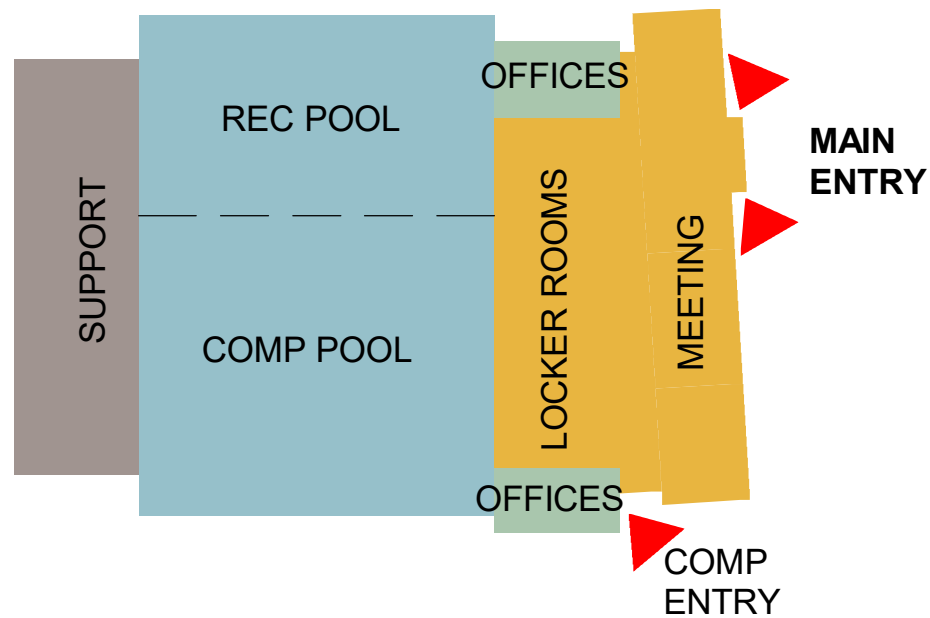


Building Exterior Design

- Wide pitched roof covering all spaces
- Dynamic frontage at north and south with good visibility into and out of the building
- Main entry visible from Fessenden
- Competition Entry convenient to the parking lot

Meet Me at Geneva

Floor Plan

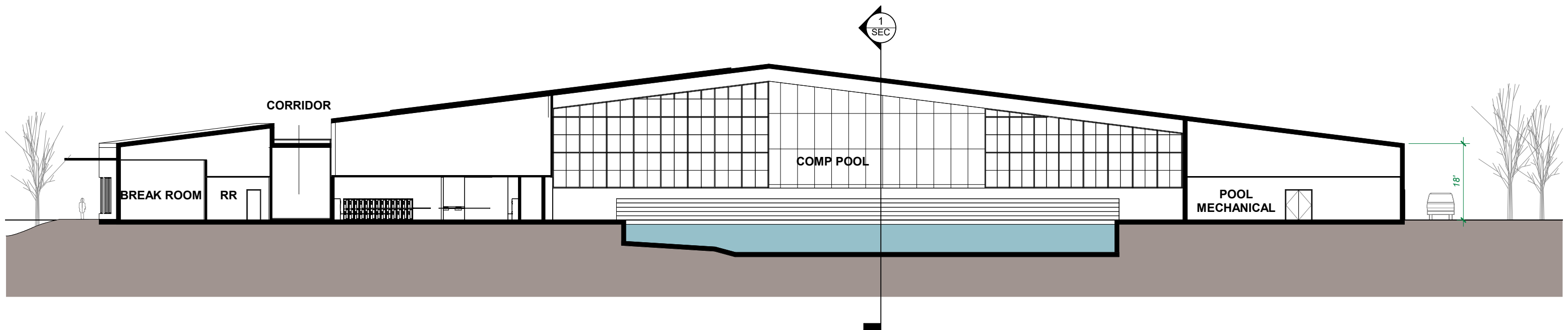
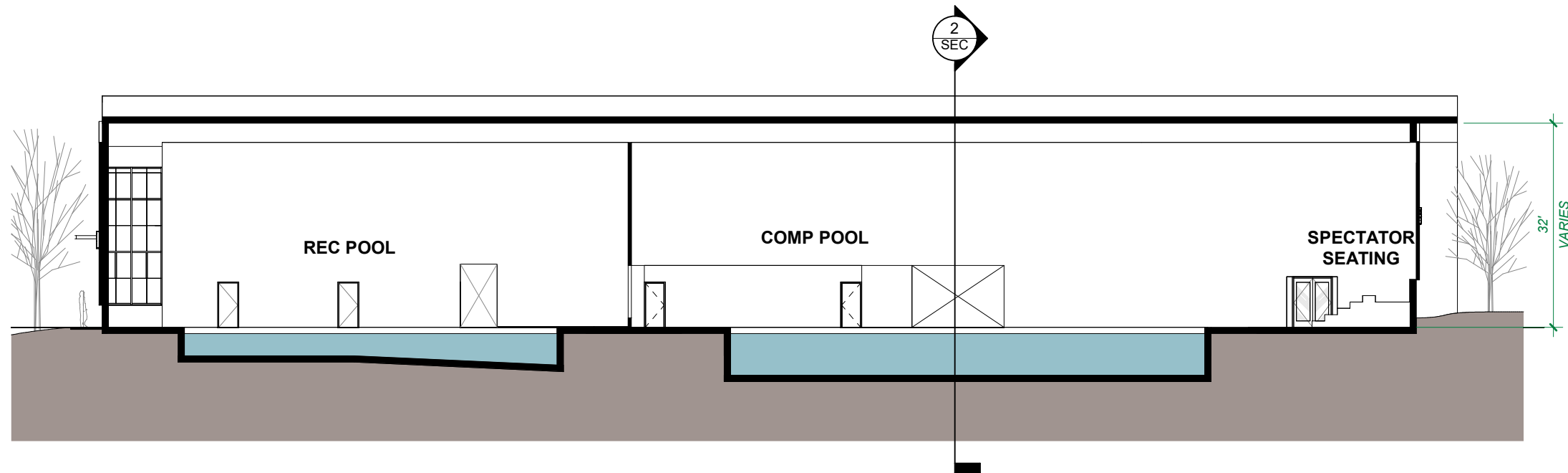


Building Interior Design

- Views through the entire building
- Angled interior walkway connects all public spaces
- Spectator seating at deck level, perpendicular to lap lanes

Meet Me at Geneva

Building Sections



Meet Me at Geneva

Aerial



Sustainability

- **Open Space:** Approx 76,000 SF open lawn
- **Heat Island Reduction:** Entry walkway adjacent to lawn will reduce perceived effect
- **Bike Facilities:** Central access off the Plaza; direct access to Fessenden bus stop and bike lane
- **Rainwater Management:** Open lawn will act as stormwater buffer
- **Trees:** 11 trees removed
- **Quality Views:** Views from the pool to trees along Fessenden; Lobby will have views to the east