



## Expanding Park Service East of I-205



**PORTLAND  
PARKS & RECREATION**

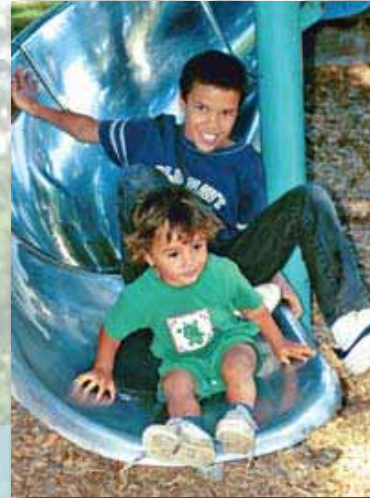
Healthy Parks, Healthy Portland

## PARKS EQUITY EAST OF I-205

### A CALL FOR PARTNERS

#### The Issue

Seventy-five percent of Portlanders enjoy access to a park or natural area within a 15-minute walk of their home. Many of the parks provide a variety of amenities from ball fields and playgrounds to pathways and picnic areas. When looking at the park system east of I-205, we see a different picture. Incorporated later into the City of Portland, East Portland does not have the rich tradition of parks and recreational places. Yet, East Portland has experienced population growth and now 40 percent of families with children are living in this area. Demand for equitable recreational services is high. New parks can cost in the tens of millions and Portland Parks & Recreation is looking toward a bond measure in the future to address these service gaps. However, it may take some time before a bond measure is put before the voters.



#### The Solution

We will turn the amenities in existing park master plans into a menu of features. Smaller, affordable basic improvements can make a big difference to a community without waiting for a bond measure. There is plenty we can do now. We need your help.

Under the guidance of Nick Fish, Parks Commissioner, Portland Parks & Recreation is embarking on a plan we call "E205." Designed to make minor improvements (under \$250,000 per site) such as community gardens, playgrounds, pathways, seating, and other amenities, E205 will leverage City dollars with private dollars to take on projects at a dozen parks (or more!) in the next 18 months.

#### Park and Project Selection Criteria

- The park has an identified service delivery gap
- The park has identified community support
- The project has broad appeal to a wide range of community members
- The project leverages other funding, partnerships, or in-kind materials and services
- The project has no significant site preparation or permitting issues and can be built or under construction within 18 months
- The project cost or total allocation per park is \$250,000

#### Contact

Mat Sinclair • [Mathew.Sinclair@portlandoregon.gov](mailto:Mathew.Sinclair@portlandoregon.gov) • 503-823-5592



# E205 – List of Planned Improvements



## East Holladay Park

Add a new playground and seating to expand park service. A playground was included as part of the Park Master Plan, but has not been funded.

**Working budget estimate: \$175,000 - \$200,000**



## East Portland Community Center

Add a new playground to expand service. A playground was included as part of the Community Center Master Plan, but funding has not been available. Some initial seed funding has been raised by the community. Construction of this playground, envisioned as a play area for smaller children, will provide an important amenity for the community and will help implement the Master Plan. The Community Center draws visitors from all over East Portland.

**Working budget estimate: \$175,000 - \$200,000**

## Already Funded!

### Columbia Slough property (at 11140 NE Simpson)

Construction of a trail to connect public access on NE Simpson Street to an existing canoe launch on adjacent Portland Water Bureau (PWB) property. To be funded primarily by PWB and, possibly, the Columbia Slough Trail Fund. Construction of the Columbia Slough Trail on these two properties is also proposed.

**Budget estimate: \$200,000-\$290,000**

### Ventura Park

Construction of a bike skills area on a trial-use basis. In partnership with Northwest Trail Alliance,

**Estimate of in-kind labor and materials is pending.**

### Ed Benedict Park

Add a new community garden. A community garden was included in the Ed Benedict Park Master Plan, but not funded. Construction of the community garden will help meet the Community Garden Initiative goal of 1,000 new community garden plots by 2012. The Friends of Ed Benedict Memory Garden are interested in working with PP&R to construct the community garden.

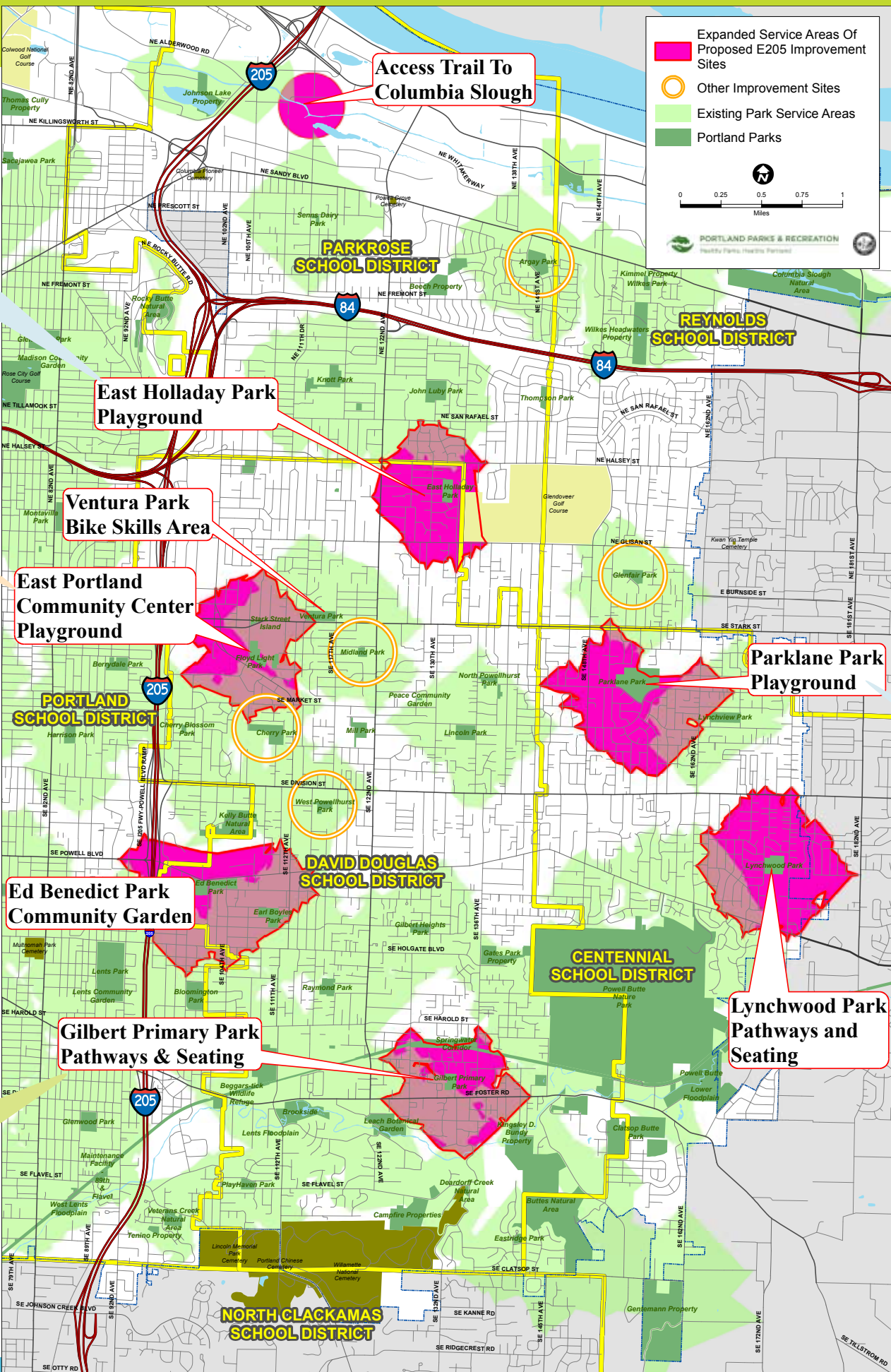
**Budget estimate: \$45,000 (\$30,000 in PDC funds).**



## Gilbert Primary Park

Add a soft-surface path, seating, and drinking fountain to expand park service. Community members and the local school district have both contacted PP&R staff with an interest in a soft-surface path at the park and at the adjacent elementary school.

**Working budget estimate: \$100,000**



## Other Improvement Sites

### Argay Park

Add seating and drinking fountain by the dog off-leash area.

### Cherry Park

Add seating and path by the dog off-leash area.

### Midland Park

Add two to three new picnic tables.

### West Powellhurst Park

Add new park benches around the soft-surface path.

### Glenfair Park

Add new park benches, picnic tables, and pathway.

### Ed Benedict Park

Add a new drinking fountain near the skate plaza.

**The working budget estimate for this group of improvements (6 sites) is \$160,000 - \$200,000**



Dog off-leash areas

Glenfair Park



Ed Benedict skate plaza

## Parklane Park

Add new and renovate existing play equipment, two drinking fountains, and seating to expand park service. The play equipment at Parklane Park is older and needs to be replaced. Community members and neighborhood groups have approached PP&R requesting these improvements.

**Working budget estimate: \$125,000 - \$150,000**



## Lynchwood Park

Lynchwood Park does not have a formal pathway system, or many park amenities. A soft-surface pathway system will help provide access and visibility to the park (addressing some neighborhood-identified safety concerns), and the addition of amenities like benches and a picnic table will provide more comfortable use of the park.

**Working budget estimate: \$125,000 - \$150,000**



**Total E205 Project Budget: \$1 million**



Parks are the heart of our communities. From elders to toddlers, our parks are places to meet friends, relax, and play.

It's no secret that rapidly growing East Portland is underserved by park facilities. Over the years, PP&R has acquired a number of great properties for future parks. We have completed master plans for several parks and made improvements where funding has allowed.

When we pass a bond measure in 2-3 years, building out new parks east of Interstate 205 will be a priority. But, like many of you, I'm not willing to wait.

The E205 Initiative will build amenities such as children's playgrounds, picnic tables, and water fountains – small scale improvements that make a huge impact in our neighborhoods. The City has committed \$500,000 for immediate improvements – but we know that through public-private partnerships and the Portland Parks Foundation, we can do even more. Join us in this community-changing campaign to create \$1 million worth of real change where it matters most.

Sincerely,  
Nick Fish  
City of Portland Parks Commissioner



The E205 concept is exciting in many ways. First, the City of Portland has found outstanding opportunities to improve citizens' lives using targeted investments of relatively small amounts of money. City-owned land will be transformed into vibrant, community hubs that make Portland a great place to live. Second, the city is leveraging limited public dollars to raise private matching funds—parlaying strong investments into outstanding opportunities. Parks are the catalyst for healthy communities, making kids active, and bringing citizens together. When our underserved communities thrive, our entire city can thrive.

It will take commitment and leadership from across Portland to make this goal possible. For more than a decade, Portland Parks Foundation has served as the City's lead partner in connecting visionary individuals and businesses with historic opportunities to advance Portland's parks and park programs. If you are passionate about parks, please contact us. We can find the right opportunity for you to make a difference.

Sincerely,  
Nick Hardigg  
Executive Director, Portland Parks Foundation



**PORTLAND  
PARKS & RECREATION**

Healthy Parks, Healthy Portland



Commissioner Nick Fish • [www.PortlandParks.org](http://www.PortlandParks.org)